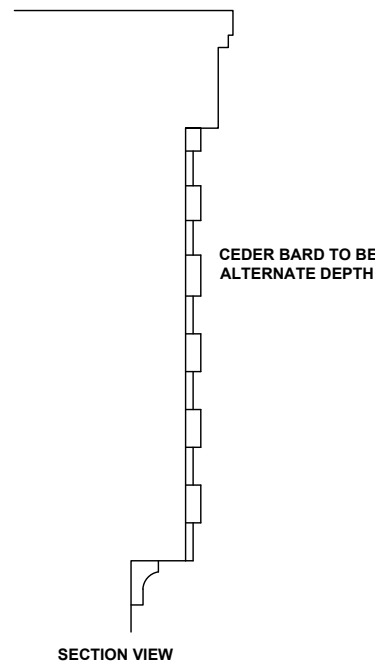


CEDAR CLADDING DETAIL



2 DEPTH CEDAR BOARDING TO GABLE END

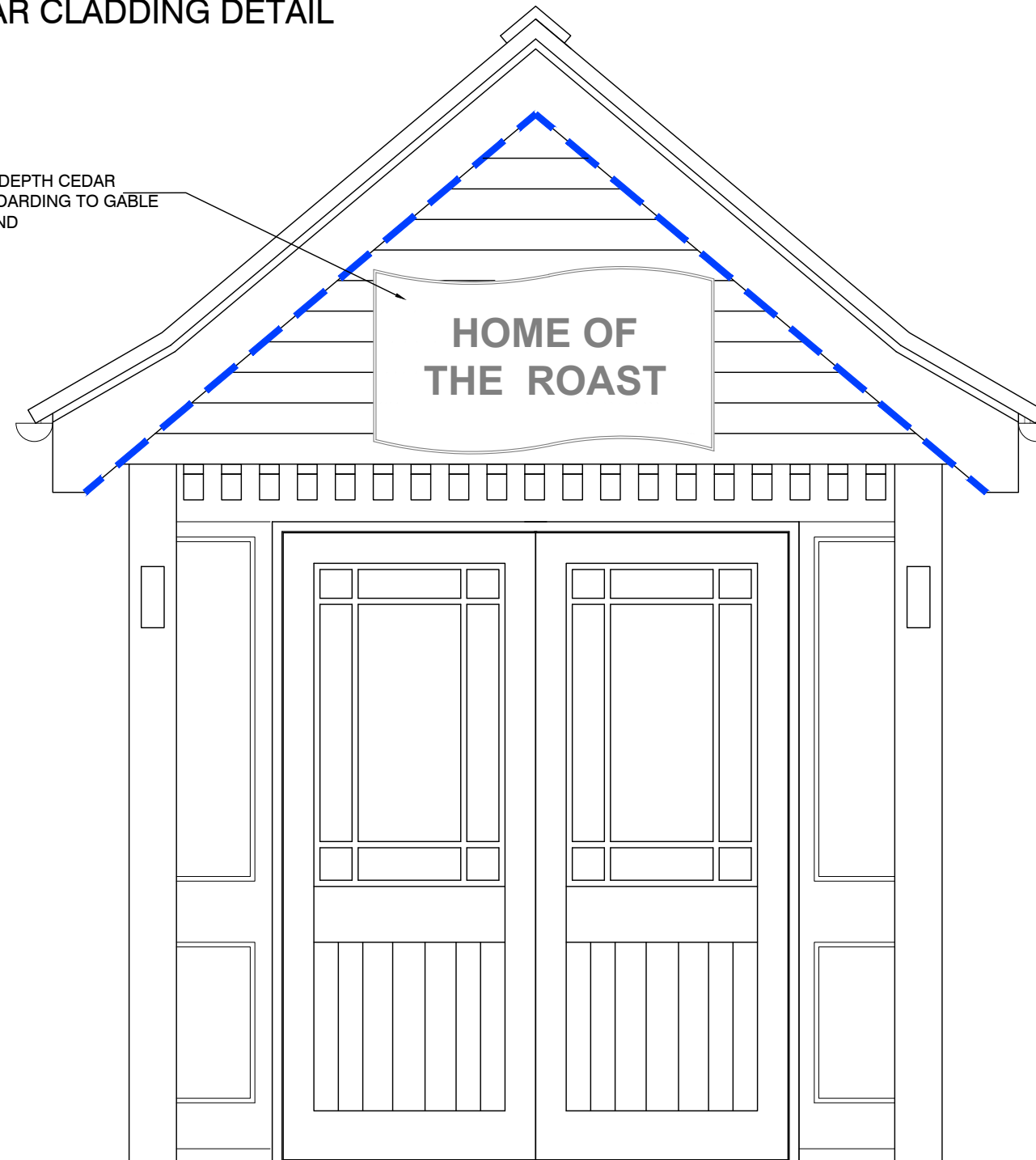


IMAGE 1 - GENERIC CEDAR CLADDING



aba
architecture and interiors
globe works, kelham island, sheffield, s6 3ae 0114 201 5023

www.abaarchitecture.co.uk

CLIENT: MAB - TOBY CARVERY - F23 REMODEL

PROJECT: BUN:032298: TC BEXLEY HEATH (CROOK LOG)

CROOK LOG ROAD,
BEXLEY HEATH,
LONDON
DA6 8EQ

TITLE: DETAILS: CEDAR CLADDING

INITIALS: JP DATE: Nov 23 SCALE: 1.20 (A3)

NUMBER: 2525-216 REV: ---- STATUS: PLANNING

GENERIC DETAIL