

**REFUSE + RECYCLING: DISCHARGE OF CONDITION 3: REF: 13/12319/FULL**

- The Craven Hotel has 30N° bedrooms and GIA is below 500sqm.
- The hotel does not operate breakfast or restaurant facility.
- The refuse is collected every other day from the basement for storage areas within the vaults under the pavement and loaded directly onto the refuse vehicle.
- The vaults will have lockable doors with FBI keys and will have adequate signage.
- The refuse/ recycling will be stored in two separate ventilated washable vaults:

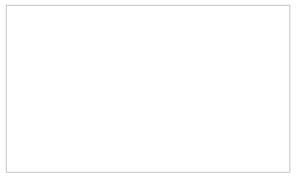
**Recycling:**

- 70% of 1500 litres i.e 1050 litres.
- 10% paper and cardboard i.e 105 litres this will be collected and stored in 1N° 120 litre clear sack 160 gauge.
- 10% dry mixed recyclables i.e 105 litres this will be collected and stored in 1N° 120 litre clear sack 160 gauge.
- 10% glass i.e 105 litres this will be collected and stored in 1N° 230 litre clear sack 160 gauge.
- 40% food waste i.e 420 litres: this will be collected and stored in washable 23 litre food caddies.
- The remaining 30% general waste i.e 450 litres will be collected and stored in 4N° 120 litre black bin sacks 160 gauge.

**SECURE STAFF CYCLE STORE: DISCHARGE OF CONDITION 5: REF: 13/12319/FULL**

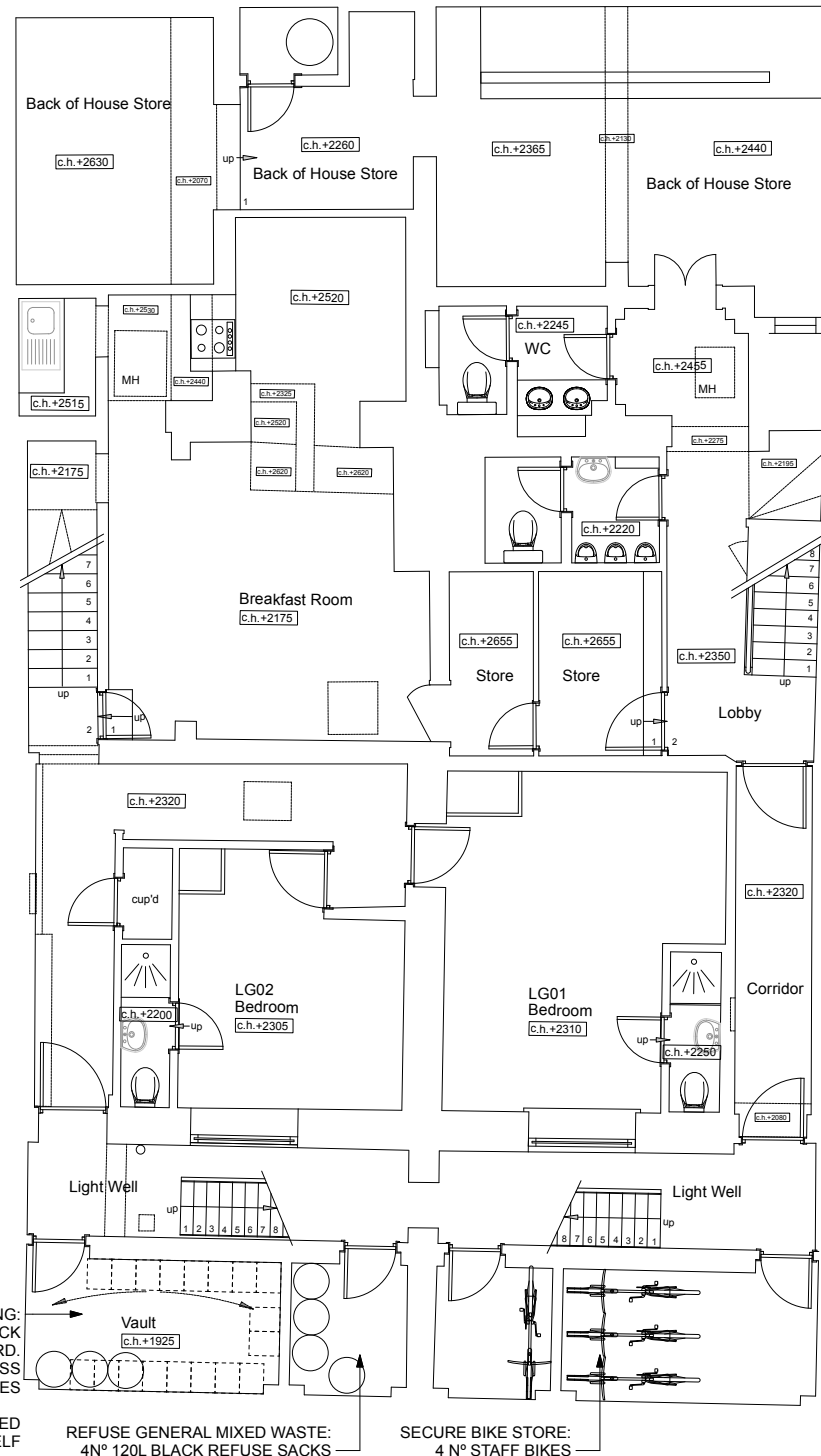
- There are no fulltime staff employed at the hotel
- The proposal is to provide 4N° secure bicycle at basement level accessed from the street level via an external staircase for the part time staff use.

Key Plan



Check drawing on receipt and immediately report any discrepancies to the Architect.  
Verify all dimensions and levels on site prior to construction.  
The contents of this drawing are Trevillion Architects copyright and shall not be re-used without their written permission.

Notes

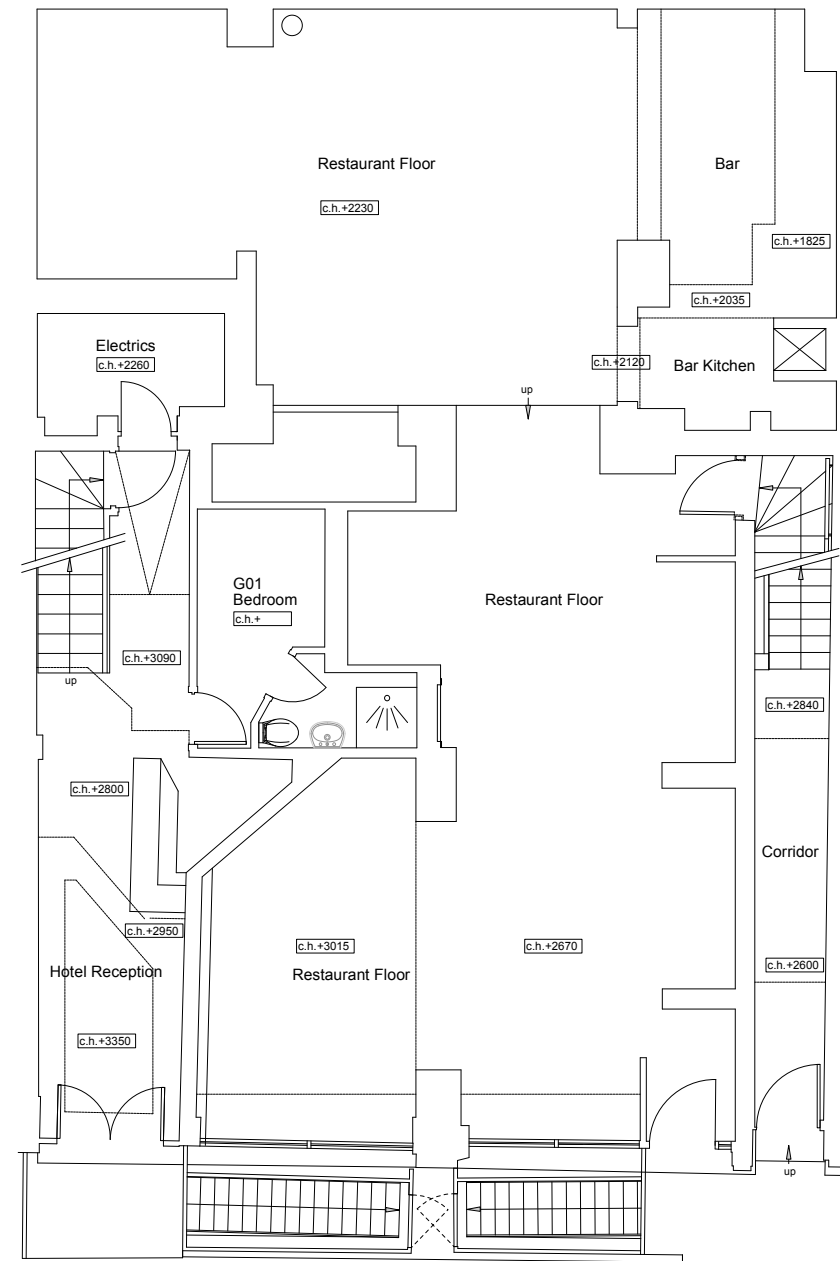


RECYCLING:  
1N° 120L CLEAR REFUSE SACK  
PAPER + CARDBOARD.  
1N° 120L GLASS  
1N° 120L MIXED RECYCLABLES  
23L FOOD CADDIES X18 LOCATED  
ON FLOOR + SHELF

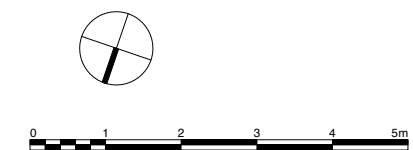
REFUSE GENERAL MIXED WASTE:  
4N° 120L BLACK REFUSE SACKS

SECURE BIKE STORE:  
4 N° STAFF BIKES

**1 LOWER GROUND FLOOR PLAN**  
Scale: 1:50



**2 GROUND FLOOR PLAN**  
Scale: 1:50



Rev.	Date	Note	Approved

**Trevillion Architects Ltd**

42 Prebend Gardens  
London W6 0XU  
T +44(0)797 0243 614  
a.trevillion@stiffandtrevillion.com

Client

-

Project  
**THE CRAVEN HOTEL**  
10-11 CRAVEN TERRACE  
LONDON, W2 3QD

Drawing Title  
**LOWER GROUND + GROUND  
FLOOR DISCHARGE OF  
CONDITIONS 3 + 5  
REF: 13/12319/FULL**

Date	Scale @ A1	Scale @ A3
DEC. 2023	1:50	1:100

Project No.	Drawing Status	Purpose
1011	DISCHARGE OF CONDITIONS 3 + 5	

Drawing Number	Revision
02-110	