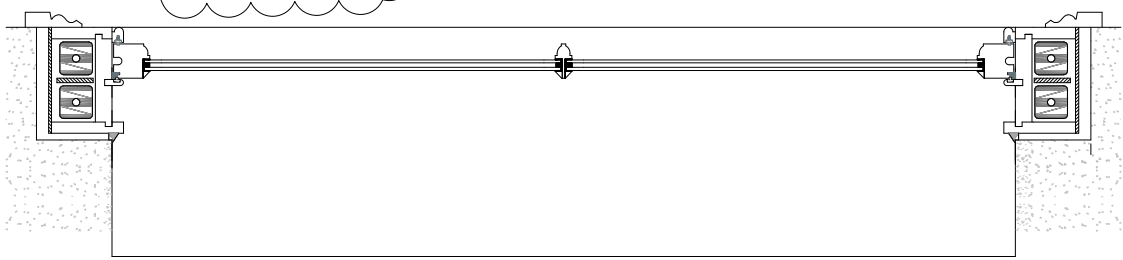
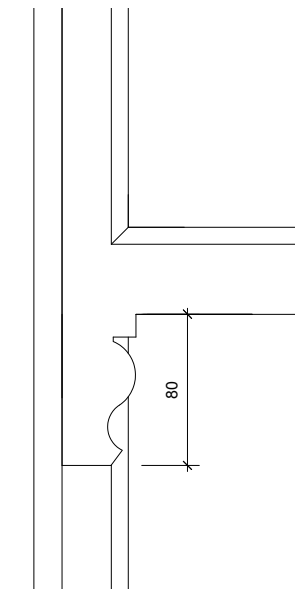
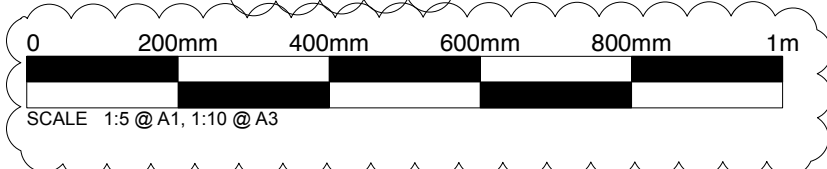


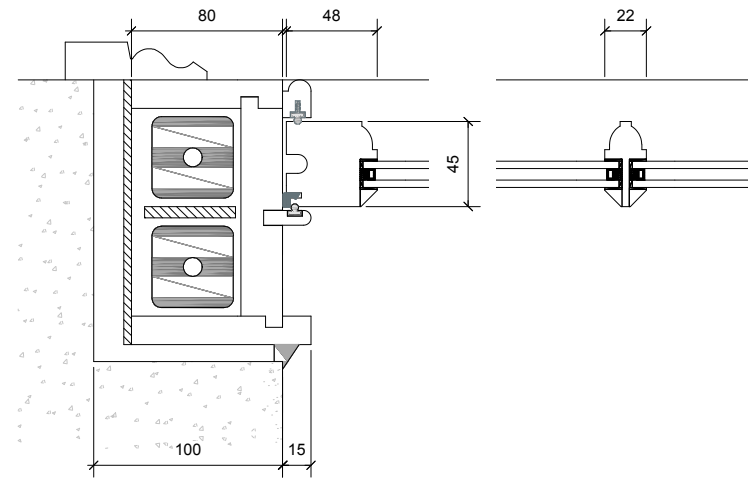
1 SASH WINDOW ELEVATION
Scale: 1:5 @ A1 / 1:10 @ A3



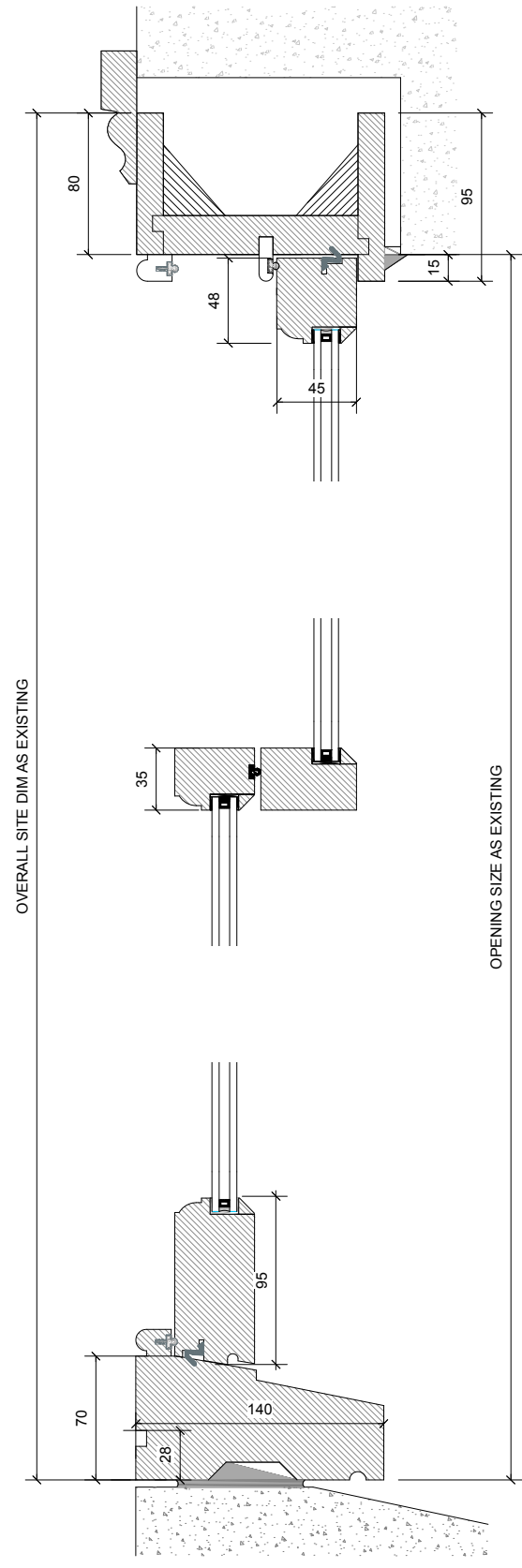
2 SASH WINDOW PLAN
Scale: 1:5 @ A1 / 1:10 @ A3



3 SASH WINDOW DETAIL
Scale: 1:2 @ A1 / 1:4 @ A3



4 SASH WINDOW PLAN DETAIL
Scale: 1:2 @ A1 / 1:4 @ A3



5 SASH WINDOW SECTION DETAIL
Scale: 1:2 @ A1 / 1:4 @ A3



Check drawing on receipt and immediately report any discrepancies to the Architect.
Verify all dimensions and levels on site prior to construction.
The contents of this drawing are Trevillion Architects copyright and shall not be re-used without their written permission.

- Notes
1. ALL COMPONENTS IN HARDWOOD.
 2. ALL WOODWORK FINISH IN WHITE PAINT.
 3. ALL GLAZING PANELS TO BE PUTTIED EXTERNALLY.
 4. ALL WINDOWS TO BE FULLY WEATHER STRIPPED WITH WHITE COMPRESSION SEALS.
 5. WINDOWS TO BE FITTED WITH LEAD COUNTER BALANCE WEIGHTS
 6. WINDOWS TO BE GLAZED WITH CLEAR TIMBALITE 4/64 LOW E KRYPTON FILLED DOUBLE GLAZED UNITS WITH WHITE SPACER BARS.

Rev. Date	Note	Approved
A	31/12/23 SCALE BAR + ANNOTATION ADDED	

Trevillion Architects Ltd
42 Prebend Gardens
London W6 0XU
T +44(0)797 0243 614
a.trevillion@stiffandtrevillion.com

Client
-

Project
THE CRAVEN HOTEL
10-11 CRAVEN TERRACE
LONDON, W2 3QD
REF: 13/12319/FULL

Drawing Title
TYPICAL DOUBLE GLAZED SASH WINDOW - DISCHARGE OF CONDITION 9

Date	Scale @ A1	Scale @ A3
DEC. 2023	VARIES	VARIES

Project No.	Drawing Status	Purpose
1011	DISCHARGE OF CONDITION 9	X

Drawing Number	Revision
02-120	A