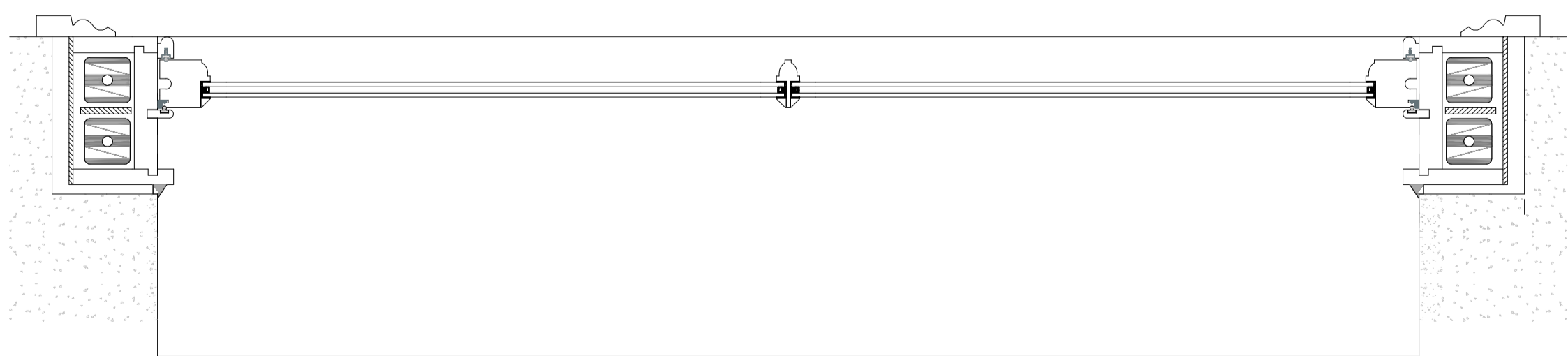
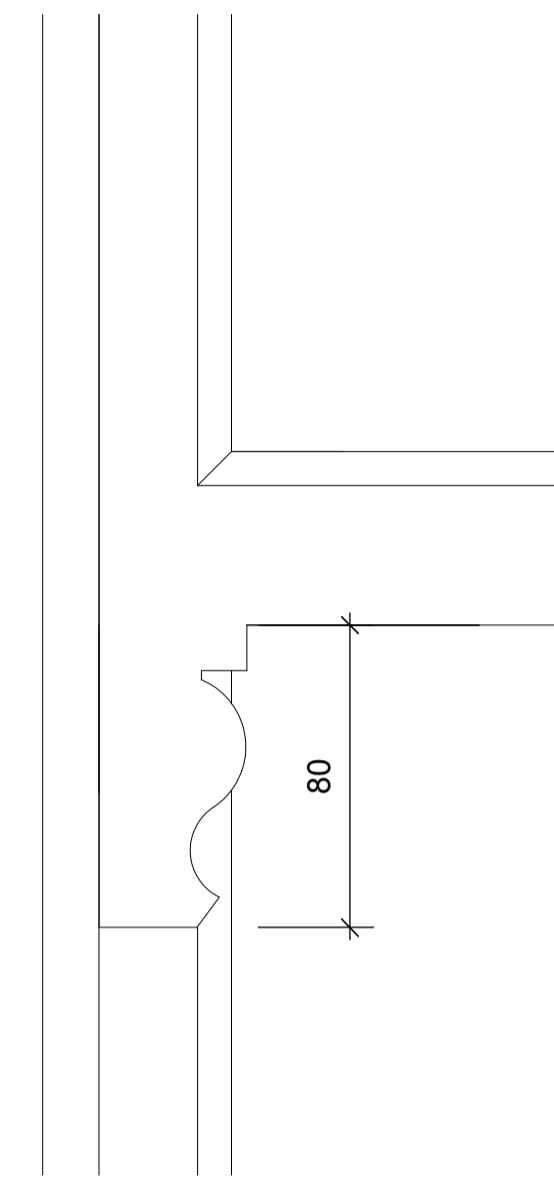


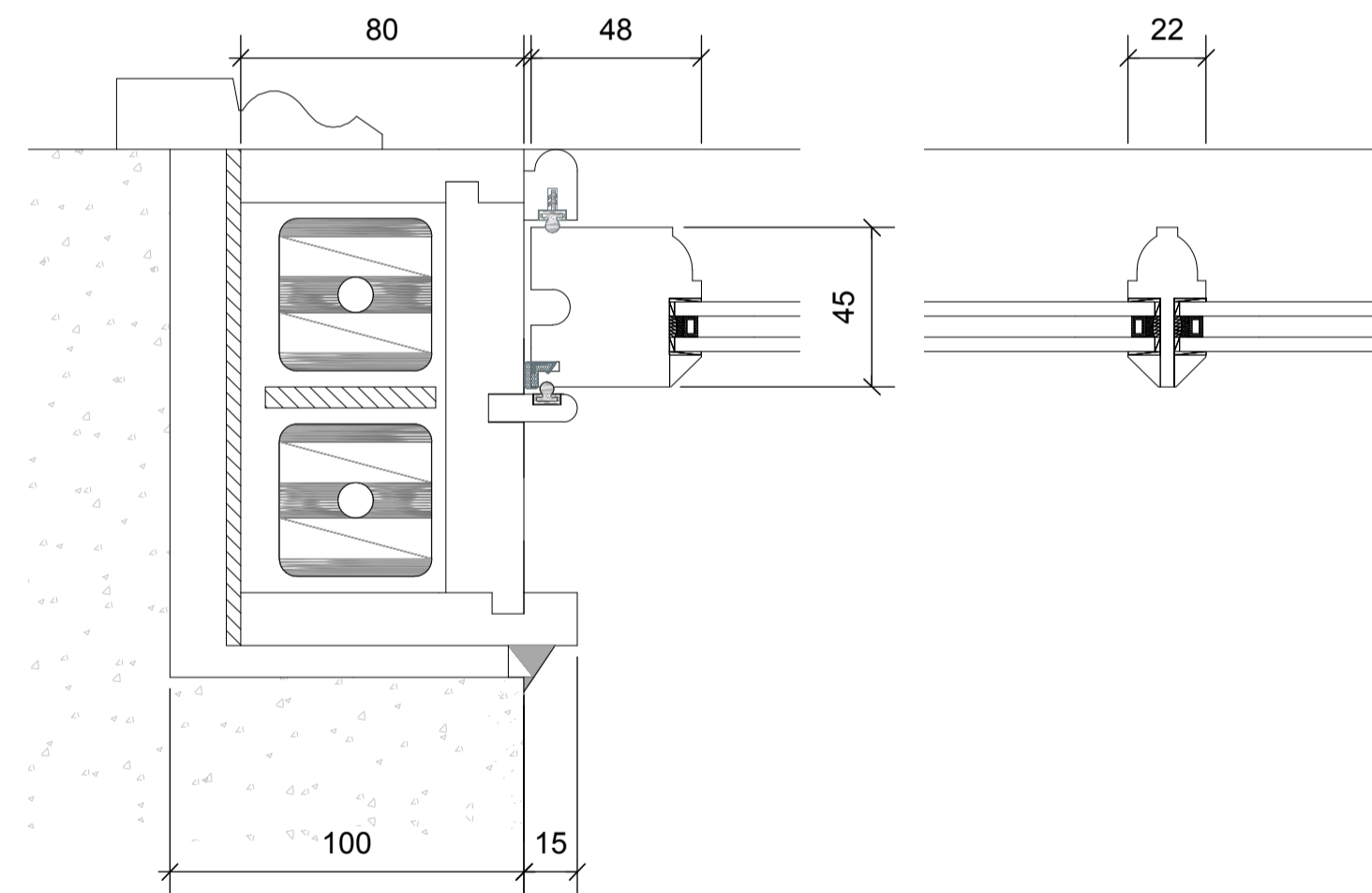
1 SASH WINDOW ELEVATION  
Scale: 1:5



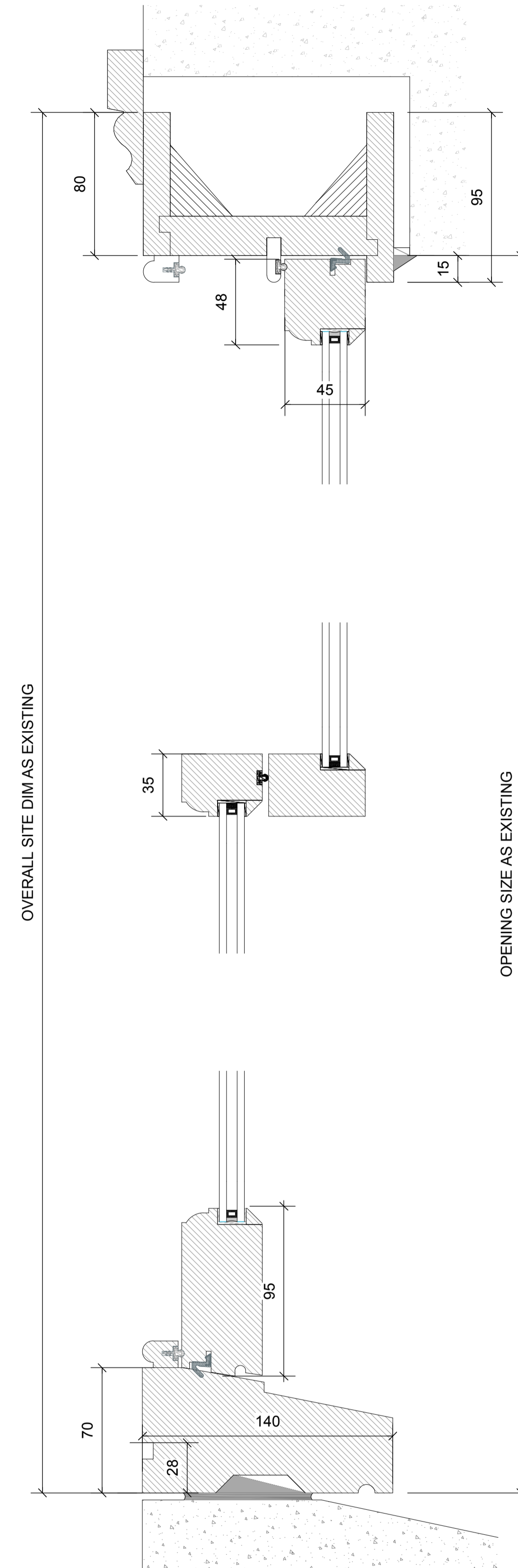
2 SASH WINDOW PLAN  
Scale: 1:5



3 SASH WINDOW DETAIL  
Scale: Half Actual Size

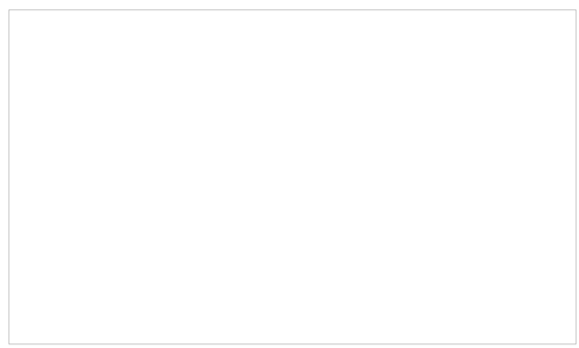


4 SASH WINDOW PLAN DETAIL  
Scale: Half Actual Size



5 SASH WINDOW SECTION DETAIL  
Scale: Half Actual Size

Key Plan



Check drawing on receipt and immediately report any discrepancies to the Architect.  
Verify all dimensions and levels on site prior to construction.  
The contents of this drawing are Trevillion Architects copyright and shall not be re-used without their written permission.

Notes

1. ALL COMPONENTS IN HARDWOOD.
2. ALL WOODWORK FINISH IN WHITE PAINT.
3. ALL GLAZING PANELS TO BE PUTTIED EXTERNALLY.
4. ALL WINDOWS TO BE FULLY WEATHER STRIPPED WITH WHITE COMPRESSION SEALS.
5. WINDOWS TO BE FITTED WITH LEAD COUNTER BALANCE WEIGHTS
6. WINDOWS TO BE GLAZED WITH CLEAR TIMBALITE 4/6/4 LOW E KRYPTON FILLED DOUBLE GLAZED UNITS WITH WHITE SPACER BARS.

Rev.	Date	Note	Approved

**Trevillion Architects Ltd**

42 Prebend Gardens  
London W6 0XU  
T +44(0)797 0243 614  
a.trevillion@stiffandtrevillion.com

Client

Project

THE CRAVEN HOTEL  
10-11 CRAVEN TERRACE  
LONDON, W2 3QD  
REF: 13/12319/FULL

Drawing Title

TYPICAL DOUBLE GLAZED  
SASH WINDOW - DISCHARGE  
OF CONDITION 9

Date	Scale @ A1	Scale @ A3
DEC. 2023	VARIES	VARIES

Project No.	Drawing Status	Purpose
1011	DISCHARGE OF CONDITION 9	X

Drawing Number	Revision
02-120	