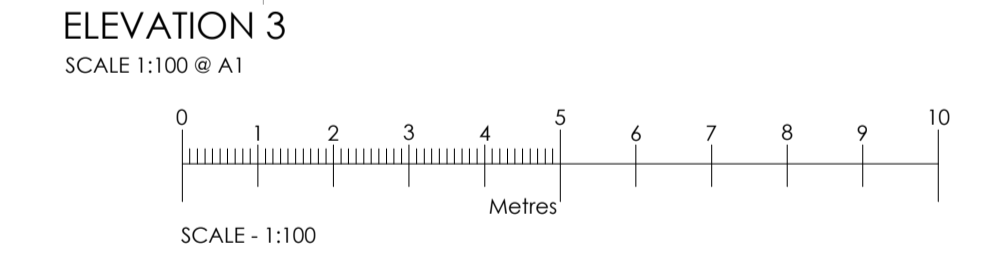
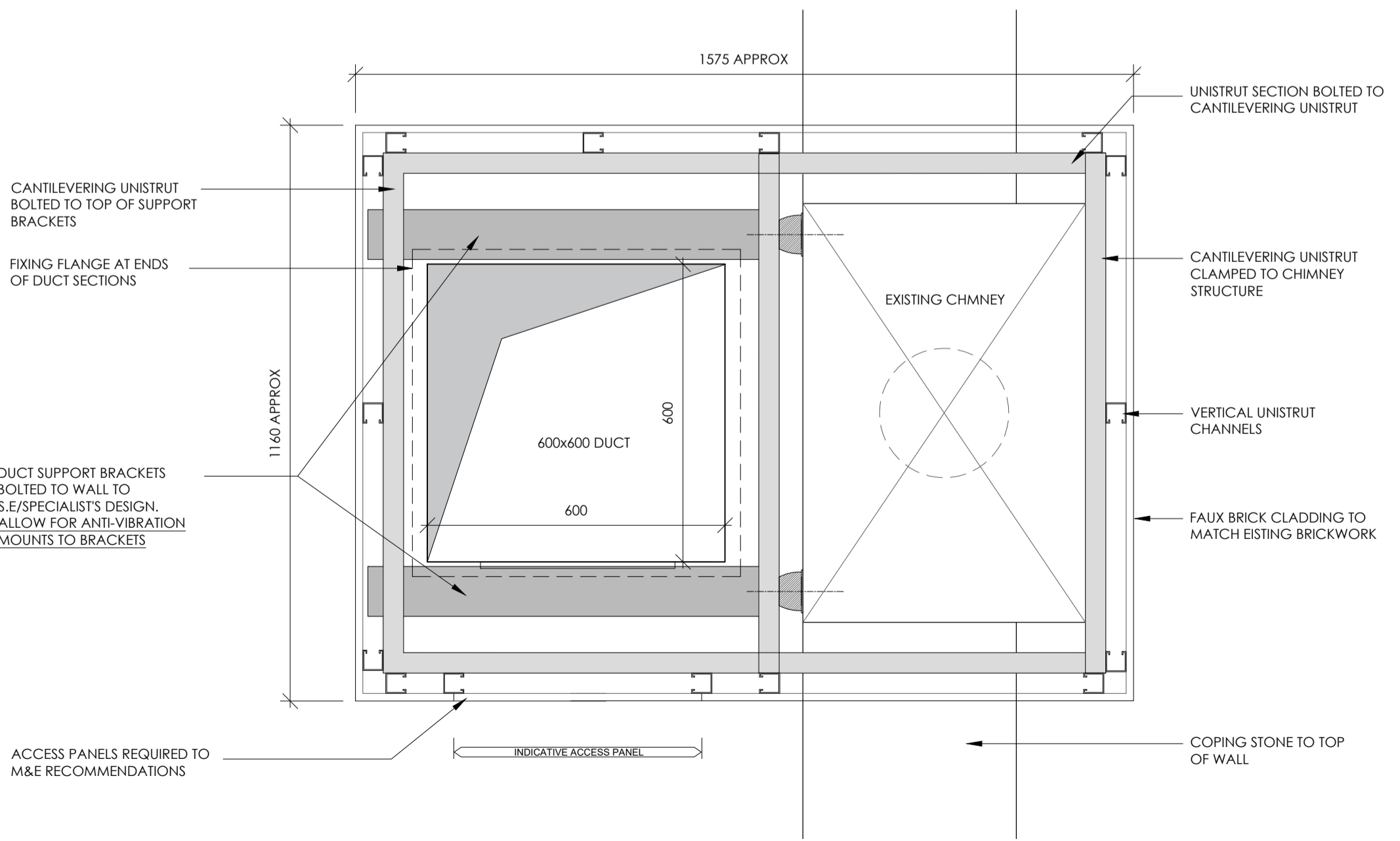
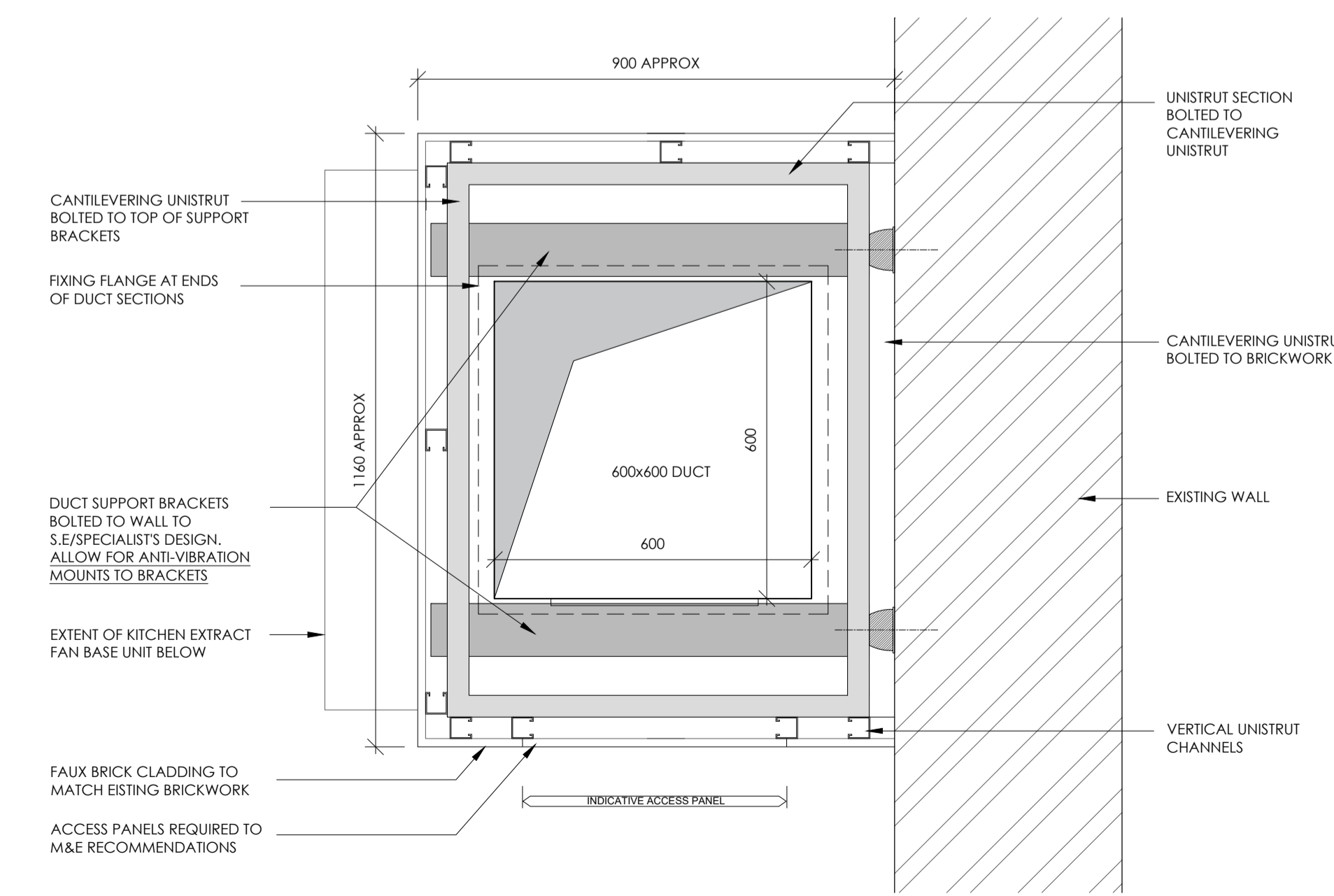


- GENERAL NOTES:**
1. ALL SERVICES/ROUTES THROUGHOUT BUILDING TO BE FULLY COORDINATED ON SITE.
  2. DRAWING TO BE READ IN CONJUNCTION WITH THE INSTALLATION SPECIFICATION AND ALL OTHER RELEVANT DRAWINGS.
  3. DUCTWORK MATERIAL & INSTALLATION TO DW/144 CLASS 'A'.
  4. FINAL DESIGN SHOP DRAWING AND DETAIL CO-ORDINATION DRAWINGS TO BE SUBMITTED FOR ENGINEER COMMENT PRIOR TO START ON SITE.
  5. FIRE DAMPERS TO BE PROVIDED AT ALL PENETRATIONS THROUGH FIRE COMPARTMENTS, SEE ARCHITECT'S DRAWING FOR COMPARTMENTATION DETAILS.
  6. DUCTWORK ACCESS DOORS TO BE PROVIDED ADJACENT TO EACH CHANGE OF DIRECTION, DAMPERS AND DUCT MOUNTED EQUIPMENT OR EVERY 10m.
  7. PROVIDE VOLUME CONTROL DAMPERS ON ALL DUCTWORK BRANCHES.

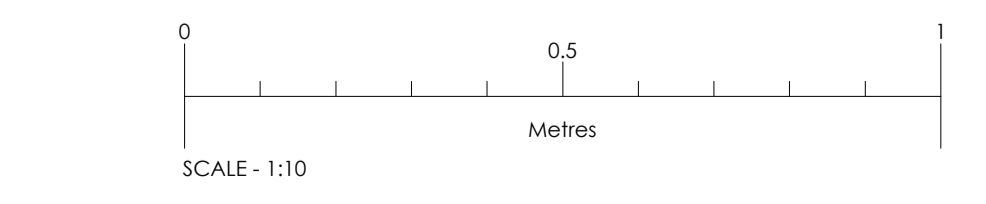


**PLANT SCHEDULE**

REF	MANUFACTURER	MODEL	UNIT SIZE (mm)	AIR FLOW (l/s)
OU 1	mitsubishi	PLUMY-P200	1338H x 1050W x 370D	2350
OU 2	mitsubishi	PLUMY-P200	1338H x 1050W x 370D	2350
OU 3	mitsubishi	PLUMY-SP140	981H x 1050W x 370D	1833
KC.1	GREEN COOLING	JEHR-0150-B2-M-1	1100W x 445D x 660H	500

**KITCHEN EXTRACT FAN - FINAL SPECIFICATION TBC. FOLLOWING FULL DESIGN**

REF	MANUFACTURER	MODEL	DUTY	PRESSURE	DIMENSIONS
EF1	HELIOS	GBW 710444 T120	3.0 m3/s	1000Pa	1020Wx1020x1020H



Rev	Date	Comments

# PLANNING

Client  
LSL CAPITAL

Project  
49 SOUTH AUDLEY STREET  
LONDON

Title  
APPROVED PLANT & EXTRACT  
APPROVED ELEVATIONS WITH ACOUSTIC  
ENCLOSURE / CLADDING SHOWN

Project No.	Date
8435	FEB 2023
Drawing No.	Revision
8435_PD_14	
Scale	Drawn
1:100 @ A1 1:10 @ A1	MN
	Check
	RC

Nepolar House, London Road,  
Wrotham Heath, Kent, TN15 7RS  
phone: 01732 753333  
fax: 01732 753334  
info@offsetarchitects.co.uk  
www.offsetarchitects.co.uk

**offset**  
architects