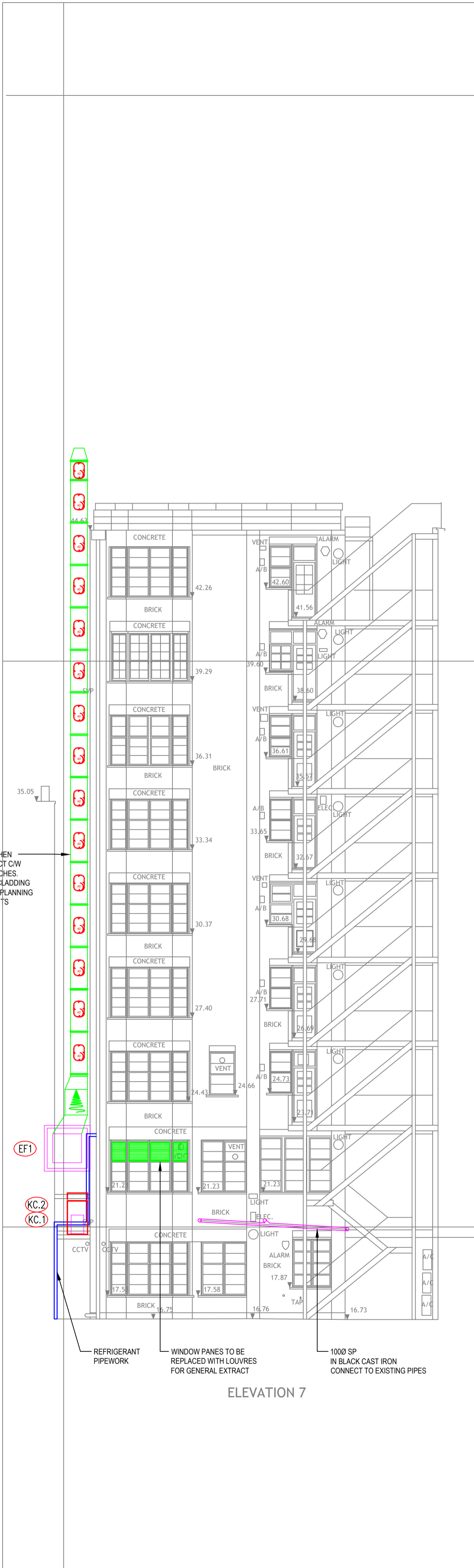


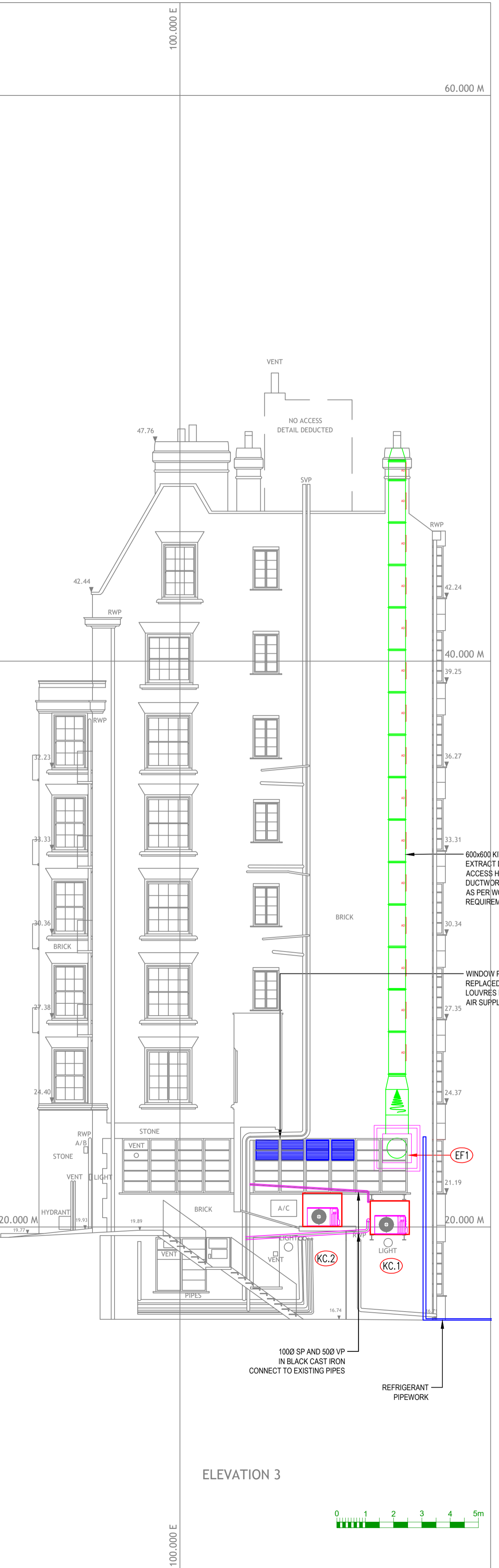
Do Not Scale.
All Figured Dimensions To Be Checked On Site Prior To Construction.
All Copyright Reserved.



ELEVATION 2



ELEVATION 7



ELEVATION 3

- GENERAL NOTES:
1. ALL SERVICES/ROUTES THROUGHOUT BUILDING TO BE FULLY COORDINATED ON SITE.
 2. DRAWING TO BE READ IN CONJUNCTION WITH THE INSTALLATION SPECIFICATION AND ALL OTHER RELEVANT DRAWINGS.
 3. DUCTWORK MATERIAL & INSTALLATION TO DW114 CLASS 'A'.
 4. FINAL DESIGN SHOP DRAWING AND DETAIL CO-ORDINATION DRAWINGS TO BE SUBMITTED FOR ENGINEER COMMENT PRIOR TO START ON SITE.
 5. FIRE DAMPERS TO BE PROVIDED AT ALL PENETRATIONS THROUGH FIRE COMPARTMENTS. SEE ARCHITECT'S DRAWING FOR COMPARTMENTATION DETAILS.
 6. DUCTWORK ACCESS DOORS TO BE PROVIDED ADJACENT TO EACH CHANGE OF DIRECTION, DAMPERS AND DUCT MOUNTED EQUIPMENT OR EVERY 10m.
 7. PROVIDE VOLUME CONTROL DAMPERS ON ALL DUCTWORK BRANCHES.

PLANT SCHEDULE

AC AND KITCHEN CONDENSERS - FINAL SPECIFICATION TBC. FOLLOWING FULL DESIGN

REF	MANUFACTURER	MODEL	UNIT SIZE (mm)	NOTE
OU.1	MITSUBISHI	PURY-P450YVW-A2	1840W x 740D x 1858H	IN ACOUSTIC ENCLOSURE
KC.1	GREEN COOLING	JEHR-0150-B2-M-1	1100W x 445D x 660H	IN ACOUSTIC ENCLOSURE
KC.2	GREEN COOLING	JEHR-0225-B2-L-3	1100W x 445D x 660H	IN ACOUSTIC ENCLOSURE

KITCHEN EXTRACT FAN - FINAL SPECIFICATION TBC. FOLLOWING FULL DESIGN

REF	MANUFACTURER	MODEL	DUTY	PRESSURE	DIMENSIONS
EF1	HELIGS	GBW 71044 1120	3.0 m3/s	1000Pa	1020Wx1020Dx1020H

KITCHEN EXTRACT FAN TO BE IN ACOUSTIC ENCLOSURE AS PER ACOUSTICIAN SPECIFICATION

REV	DETAILS	BY	APP	DATE
E	REVISED TO COMMENTS		HN	2019/2023
D	UPDATED TO COMMENTS		HN	12/07/2023
C	UPDATED TO ACOUSTIC REQUIREMENTS		HN	13/02/2023
B	PLANT SPECIFICATION ADDED		HN	19/11/2023
A	REVISED TO COMMENTS		HN	21/11/2022

CLIENT: **LSL**

PROJECT: **49 SOUTH AUDLEY STREET**

DRAWING TITLE: **EXTERNAL SERVICES PROPOSED ELEVATION**

DRAWN BY: **H.NISIC** APPROVED BY: DATE: **NOV/2022**

PROJECT No.: **L2522** STAGE: **STAGE 2** SCALE: **1:100**

DRAWING No.: **L2522SK01**



LEHDNG SERVICES DESIGN LTD
Unit 10, 10 Redlands Crescent, Laine, Co. Ards, NI Inverard, BT40 1FF.
28 Manor Green Road, Epsom, London, KT19 8RA.
Tel: +44(0) 2828 277 123 Web: www.lehdng.co.uk Email: info@lehdng.co.uk