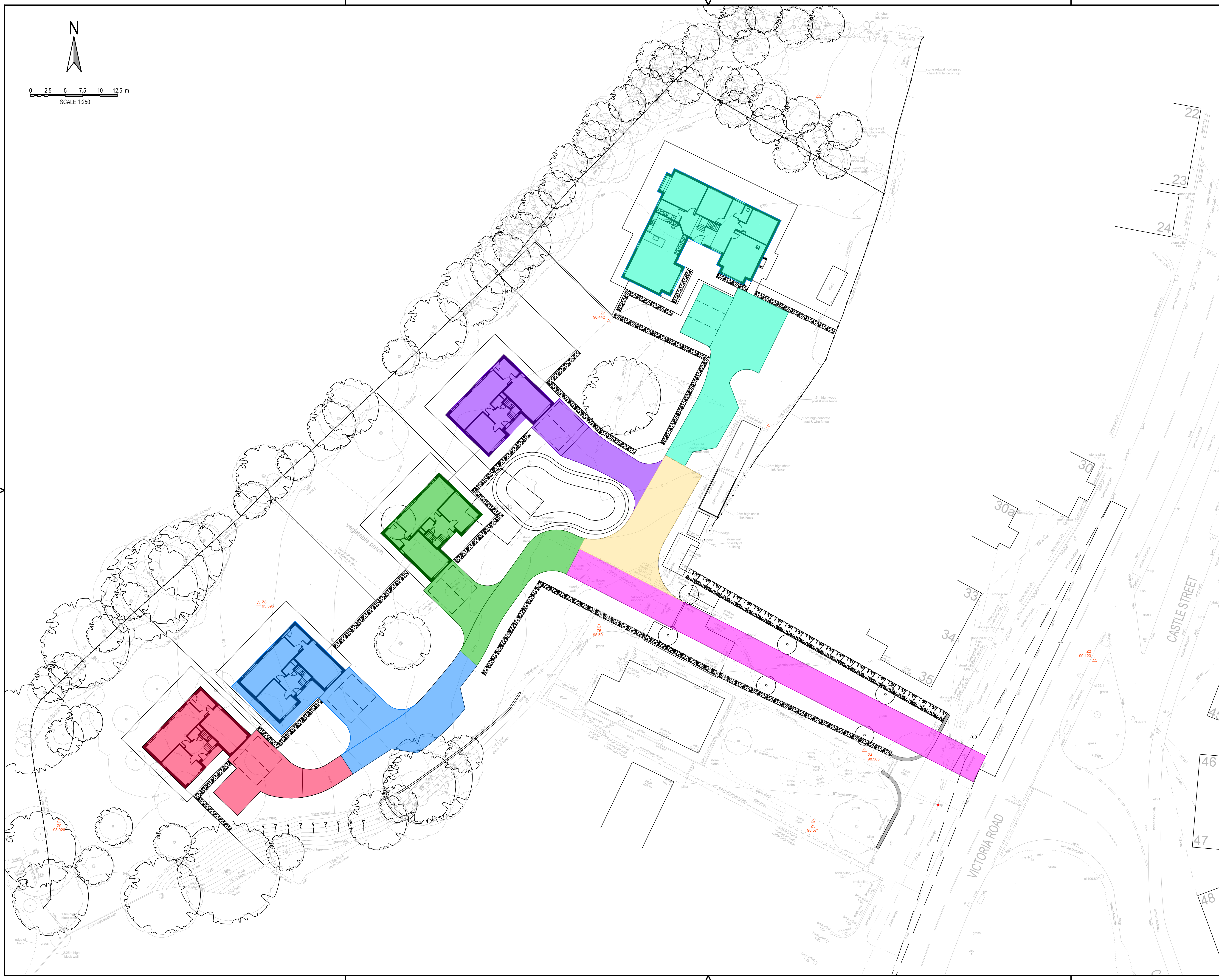




0 2.5 5 7.5 10 12.5 m  
SCALE 1:250



- GENERAL NOTES:**
1. ALL DIMENSIONS ARE IN MILLIMETRES UNLESS NOTED OTHERWISE.
  2. ALL LEVELS ARE SHOWN IN METRES UNLESS NOTED OTHERWISE.
  3. DO NOT SCALE FROM THE DRAWING. USE FIGURED DIMENSIONS ONLY.
  4. ANY DISCREPANCIES TO BE REPORTED IMMEDIATELY TO THE ENGINEER.
  5. THIS DRAWING TO BE READ IN CONJUNCTION WITH ALL RELEVANT ARCHITECTS, ENGINEERS, SUBCONTRACTORS AND SPECIALISTS DRAWINGS AND SPECIFICATIONS.
  6. EXISTING SERVICES HAVE NOT BEEN SHOWN BUT ARE PRESENT - THE CONTRACTOR IS TO LIAISE WITH ALL STATUTORY AUTHORITIES PRIOR TO THE COMMENCEMENT OF ANY WORKS.
  7. TEMPORARY WORKS DESIGN BY OTHERS.
  8. DESIGN RISK ASSESSMENTS AND METHOD STATEMENTS ARE TO BE PROVIDED TO THE PRINCIPLE CONTRACTOR PRIOR TO THE COMMENCEMENT OF ANY WORKS.

**LEGEND**

<span style="display:inline-block; width:15px; height:15px; background-color:red;"></span>	CATCHMENT 1 = 219m <sup>2</sup>
<span style="display:inline-block; width:15px; height:15px; background-color:blue;"></span>	CATCHMENT 2 = 300m <sup>2</sup>
<span style="display:inline-block; width:15px; height:15px; background-color:green;"></span>	CATCHMENT 3 = 253m <sup>2</sup>
<span style="display:inline-block; width:15px; height:15px; background-color:purple;"></span>	CATCHMENT 4 = 203m <sup>2</sup>
<span style="display:inline-block; width:15px; height:15px; background-color:cyan;"></span>	CATCHMENT 5 = 415m <sup>2</sup>
<span style="display:inline-block; width:15px; height:15px; background-color:magenta;"></span>	CATCHMENT 6 = 269m <sup>2</sup>
<span style="display:inline-block; width:15px; height:15px; background-color:yellow;"></span>	CATCHMENT 7 = 127m <sup>2</sup>

TOTAL IMPERMEABLE AREA = 1786m<sup>2</sup>  
SITE AREA = 7314m<sup>2</sup>

**PRELIMINARY**

03	HT	PG	SH	28.10.23	CATCHMENTS AMENDED
02	RM	PG	SH	28.04.23	NEW SITE LAYOUT, CATCHMENTS AMENDED TO SUIT
01	RM	PG	SH	28.04.23	PRELIMINARY
rev.	drawn	chd.	appd.	date	description

Client  
**MR ROBBIE HYDE**

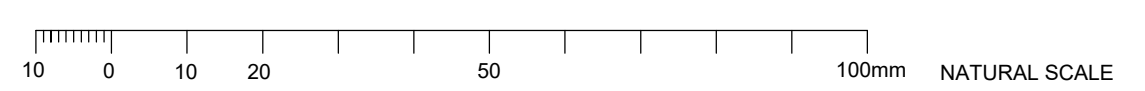
Project  
**LAND AT 40 VICTORIA ROAD, FLEUR-DE-LYS, NP12 3UG**

Title  
**PROPOSED DRAINAGE CATCHMENTS PLAN**

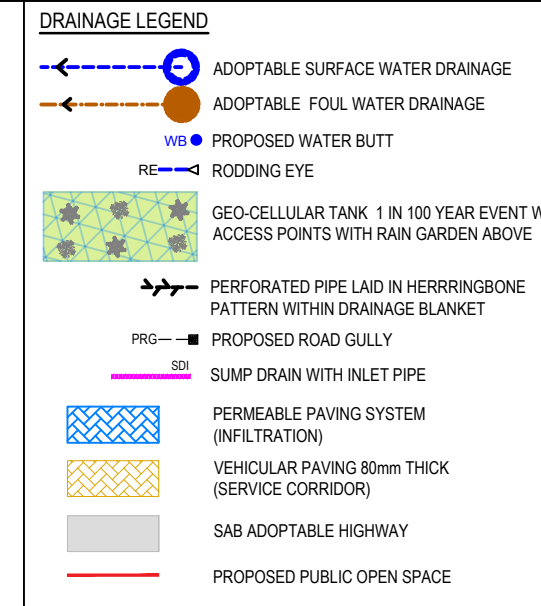
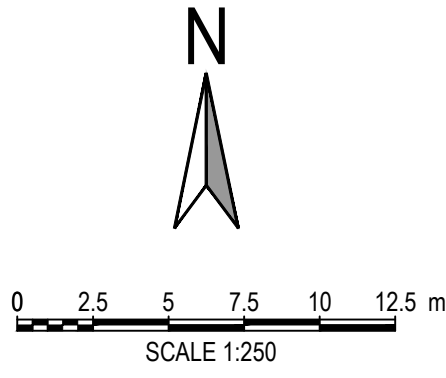
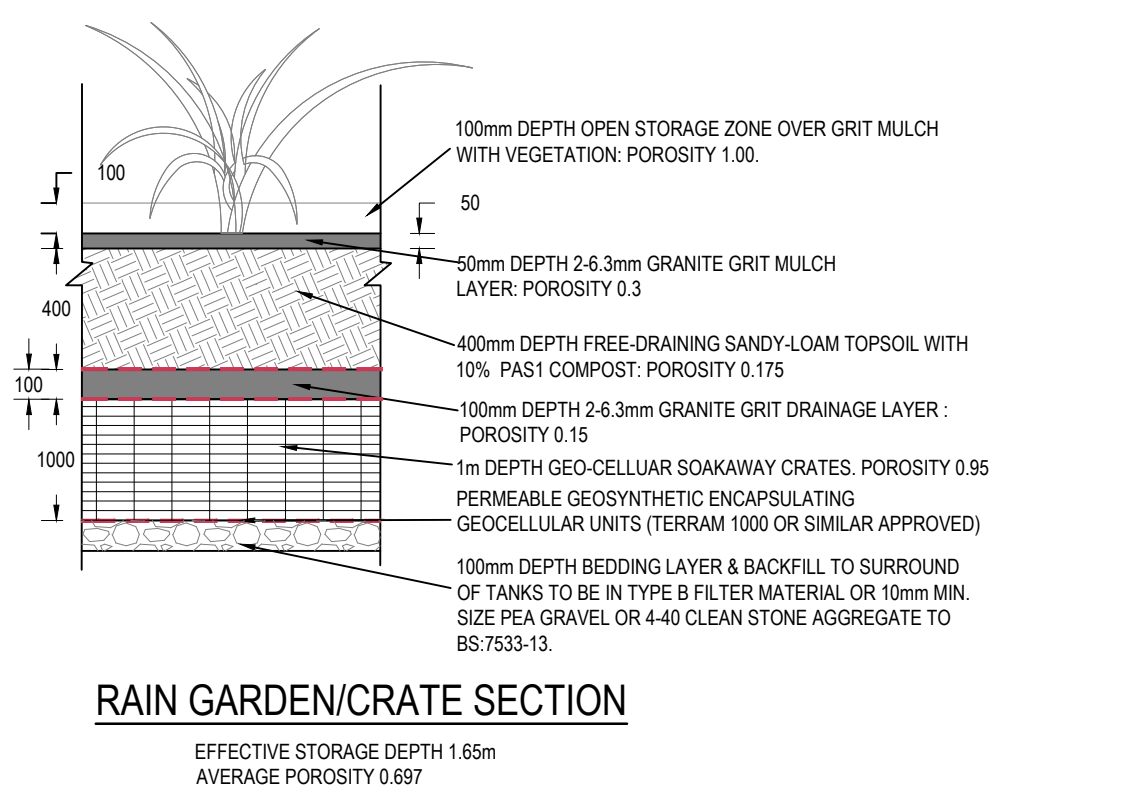


date	drawn	checked	approved
28.04.23	RM	PG	SH
scale @ A1	project no.		
1:250	17341		
status	drg. no.	rev.	
P	17341/C503	03	

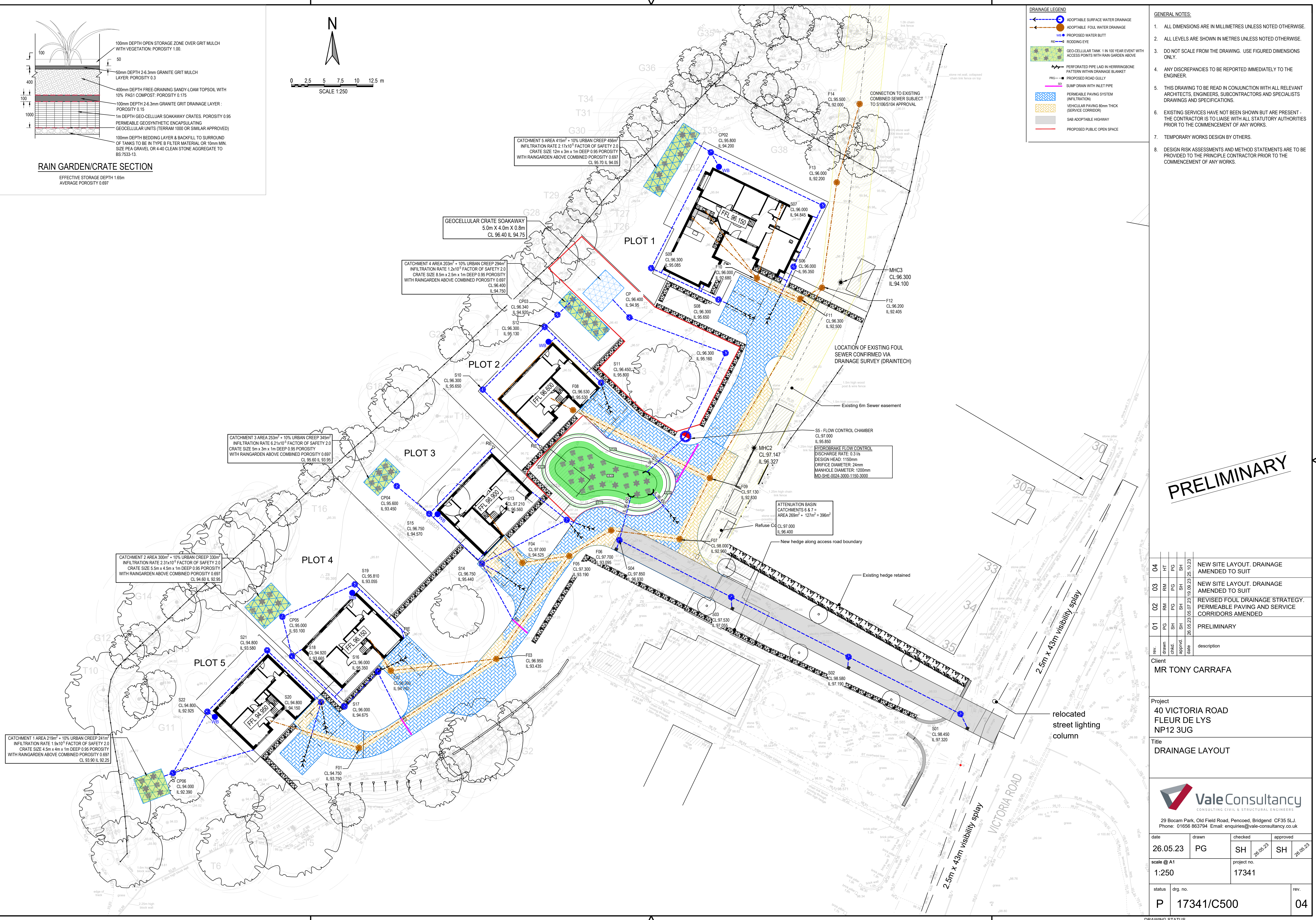
DRAWING STATUS  
A - Approval, AB - As-Built, C - Construction, D - Draft, P - Preliminary, T - Tender







- GENERAL NOTES:**
1. ALL DIMENSIONS ARE IN MILLIMETRES UNLESS NOTED OTHERWISE.
  2. ALL LEVELS ARE SHOWN IN METRES UNLESS NOTED OTHERWISE.
  3. DO NOT SCALE FROM THE DRAWING. USE FIGURED DIMENSIONS ONLY.
  4. ANY DISCREPANCIES TO BE REPORTED IMMEDIATELY TO THE ENGINEER.
  5. THIS DRAWING TO BE READ IN CONJUNCTION WITH ALL RELEVANT ARCHITECTS, ENGINEERS, SUBCONTRACTORS AND SPECIALISTS DRAWINGS AND SPECIFICATIONS.
  6. EXISTING SERVICES HAVE NOT BEEN SHOWN BUT ARE PRESENT - THE CONTRACTOR IS TO LIAISE WITH ALL STATUTORY AUTHORITIES PRIOR TO THE COMMENCEMENT OF ANY WORKS.
  7. TEMPORARY WORKS DESIGN BY OTHERS.
  8. DESIGN RISK ASSESSMENTS AND METHOD STATEMENTS ARE TO BE PROVIDED TO THE PRINCIPLE CONTRACTOR PRIOR TO THE COMMENCEMENT OF ANY WORKS.



**PRELIMINARY**

rev.	drawn	chd.	appd.	date	description
04	PG	RM	HT	26.05.23	NEW SITE LAYOUT, DRAINAGE AMENDED TO SUIT
03	PG	RM	PG	25.10.23	NEW SITE LAYOUT, DRAINAGE AMENDED TO SUIT
02	PG	SH	SH	10.09.23	REVISED FOUL DRAINAGE STRATEGY, PERMEABLE PAVING AND SERVICE CORRIDORS AMENDED
01	SH	SH	SH	26.05.23	PRELIMINARY

Client  
**MR TONY CARRAFA**

Project  
**40 VICTORIA ROAD  
FLEUR DE LYS  
NP12 3UG**

Title  
**DRAINAGE LAYOUT**



date	drawn	checked	approved
26.05.23	PG	SH	SH
scale @ A1 1:250		project no. 17341	
status <b>P</b>	drg. no. <b>17341/C500</b>	rev. <b>04</b>	

