



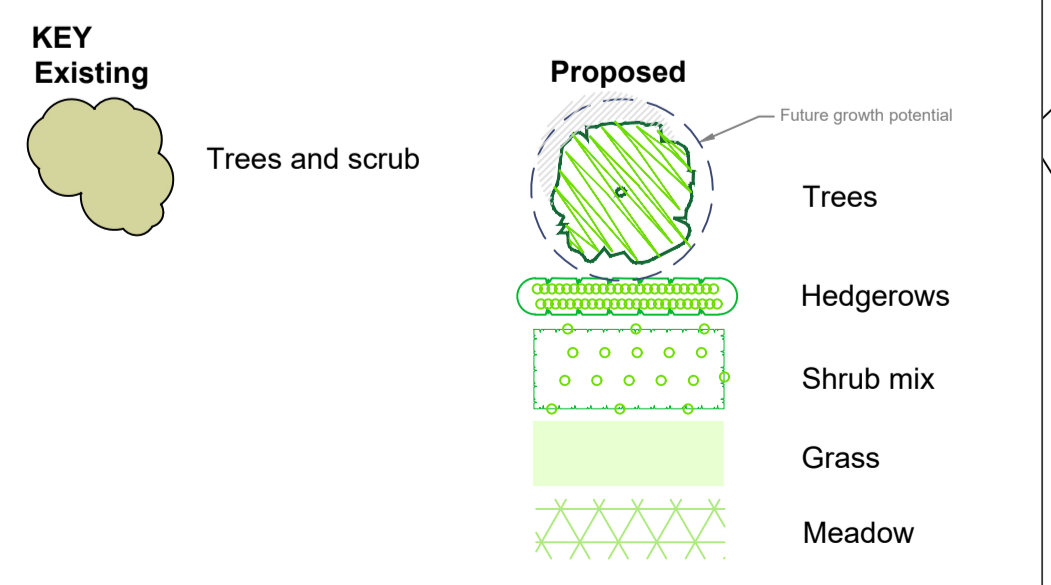
Native Tree and Shrub Mix
 78 No.Agl
 78 No.BETPE
 156 No.CORSA
 312 No.Cav
 390 No.
 78 No.LIGVU
 78 No.Pav
 78 No.Sa

1 No.C mon
 1 No.BET PEN
 1 No.C mon
 11 No.CORSA
 25 No.Cav
 9 No.I a
 9 No.VIBOP
 20 No.C san 'M F'
 84 No.BERSI
 42 No.CORSA
 101 No.Cav
 34 No.I a
 34 No.VIBOP
 1 No.Sar
 1 No.Sar
 EM3
 1 No.Sar
 EM3
 8 No.CORALSV
 8 No.C san 'M F'
 4 No.CORFLAA
 32 No.Ched
 205 No.GERMAVS
 5 No.CORSA
 12 No.Cav
 4 No.I a
 4 No.VIBOP
 EM3

1:250@A1
 1:500@A3

NOTES
Timetable
 The proposals will be implemented in accordance with the landscape planting plan and in the next planting season (October-March) post completion of the construction and thereafter maintained and retained as below.
Topsoil
 Topsoil imported to the site to be multi purpose topsoil to BS 3882:2015 with a minimum of 6% organic matter by dry weight.
 i) Topsoil 150mm deep over 450mm deep thoroughly broken up subsoil for grass areas
 ii) Topsoil 300mm deep over 600mm deep thoroughly broken up subsoil for shrubs
 iii) Topsoil 300mm deep over 900mm deep thoroughly broken up subsoil for trees
 All tree pits to have Terraocotem Arbor 3-1-7+ micro nutrients Fertiliser added to soil within tree pit. Application Rate: 1.5g / litre of soil.
Planting
 All plants to be to National Plant Specification and BS8545:2014. Trees from nursery to independence in the landscape, Recommendations and handled and planted to Handling and Establishing Landscape Plants (CPSE, 1994).
 Trees to be staked with using a three multiple stake system. Stakes to be positioned around the rootball an equal distance from the tree trunk. The tree is to be secured to the stakes with biodegradable hessian tree ties such as 'Holdfast Natural Tree Tie' (or similar approved) to be used. The tree tie is to be threaded from the stake, around the tree trunk and back to the same stake. This is done separately for each of the three stakes. Ties to be checked every four weeks and secured as necessary.
 All trees in soft landscape (10-12cm girth +) to have RootRain Urban irrigation system to be supplied and installed to manufacturer's instructions after planting of each tree or watering bags (TreeGator watering bag or similar approved) to be used. Watering regime to comply with BS 8545:2014 recommendations (Annex G: Guidance on post planting management and maintenance).
 Provide formative pruning to whip trees over a period of 5 years to establish a strong leader with a balanced and even crown.
 Hedges to be planted as specified with an unplanted area each side as shown on the drawing.
 All hedge plants to be protected by 600mm environmentally friendly spiral tree rabbit guards, such as 'Green-Tech Rainbow Treebio Biodegradable Spiral Guard', fixed with 900mm bamboo cane, ilex protected by biodegradable guard such as 'True Traders Natural Jute Barrier Netting' (fully compostable) supported by bamboo canes.
Mulching
 Plant beds to be mulched with 100mm deep green waste compost, mulch grade, to PAS 100 or 100mm conifer bark mulch 100mm down with a maximum of 20% fines (below 5mm). Hedge planting locations to be mulched with mulch matting such as 'Green-Tech Mulch Mat by Green-Tech' or similar approved to help maintenance and irrigation requirements.
Management
 All new planting to be watered as required to maintain it in a healthy condition during the critical first two full growing seasons, following the quantities in line with BS8545:2015 Annex G. In future years watering to be undertaken as required to maintain healthy and vigorous growth.
 All dead or dying back trees or shrubs to be replaced with plants to same specification in November following losses.
 All areas to be maintained weed free for a minimum of five years with a maximum of four weeks weed growth at any one time.
 Tree stakes to be removed in fourth growing season if possible or the following April. Side branches and basal shoots on trees to be removed each July to maintain a 2m trunk free of branches.
 Shrub planting to be maintained below 600mm high in visibility splays and sight lines.
 Shrubs to be cut back where overhanging paved areas in March each year.

Landscape Plant Schedule						
Trees						
Number	Abbreviation	Species	Common Name	Height	Girth	Specification
1 -	BET PEN	Betula pendula	Common Silver Birch	16-18cm	RB	
2 -	C mon	Crataegus monogyna	Common Hawthorn	14-16cm	CG	
3 -	Sar	Sorbus aria	Whitebeam	16-18cm	RB	
Shrubs						
Number	Abbreviation	Species	Height	Pot Size	Specification	Density
8 -	CORALSV	Cornus alba 'Siberica Variegata'	40-60cm	5L	CG	0.6Ctr
28 -	C san 'M F'	Cornus sanguinea 'Midwinter Fire'	40-60cm	5L	CG	0.6Ctr
4 -	CORFLAA	Cornus stolonifera 'Flaviramea'	40-60cm	5L	CG	0.6Ctr
Herbaceous						
Number	Abbreviation	Species	Pot Size	Density		
84 -	BERSI	Bergenia 'Silberlicht'	3L	0.4Ctr		
32 -	Ched	Cyclamen hederifolium	1-1.5L	5/m²		
205 -	GERMAVS	Geranium 'Mavis Simpson'	1-1.5L	0.25Ctr		
Grass Areas						
Area	Weight	Abbreviation	Seed Mix Name	Seed Mix Supplier	Density	
99.2397m²	398 g		EM3 Special General Purpose meadow Mixture	Emorgate	4g/m²	
Native tree and shrub mix						
Number	Abbreviation	Species	Height	Specification	Density	
78 -	Agl	Alnus glutinosa	1.8-2.0m	OG	1Ctr	
78 -	BETPE	Betula pendula	1.8-2.0m	OG	1Ctr	
156 -	CORSA	Cornus sanguinea	80-100cm	OG	1Ctr	
312 -	Cav	Corylus avellana	80-100cm	OG	1Ctr	
390 -		Crataegus monogyna	80-100cm	OG	1Ctr	
78 -		Ilex aquifolium	40-60cm	OG	1Ctr	
312 -	LIGVU	Ligustrum vulgare	80-100cm	OG	1Ctr	
78 -	Pav	Prunus avium	1.8-2.0m	OG	1Ctr	
78 -	Sa	Salix alba	1.8-2.0m	OG	1Ctr	
Total :1560 -						
Mixed Native Hedge Mix 2						
Number	Abbreviation	Species	Height	Specification	Pot Size	Density
117 -	CORSA	Cornus sanguinea	80-100cm	OG	5L	0.3Ctr Double Staggered at 0.3m offset
280 -	Cav	Corylus avellana	80-100cm	OG	5L	0.3Ctr Double Staggered at 0.3m offset
95 -	I a	Ilex aquifolium	60-80cm	CG	5L	0.3Ctr Double Staggered at 0.3m offset
95 -	VIBOP	Viburnum opulus	80-100cm	OG	5L	0.3Ctr Double Staggered at 0.3m offset
Total :587 -						



01622 437196 lydia@hwandco.co.uk www.hwandco.co.uk
 2 Keswick Drive, Maidstone, Kent ME16 0DD Hill-Wood & Co (Kent) Ltd Company no. 10066666

PLANNING

Project -
UNIT 1, STOREFAST, BETSHAM

Drawing title -
Landscape Planting Plan

Rev	Description	Date
-	-	-
-	-	-
-	-	-

Scale Date Drawing number Rev
 As noted Mar 2023 **0600/23/B/1**

1:500@A1
 1:1000@A3

