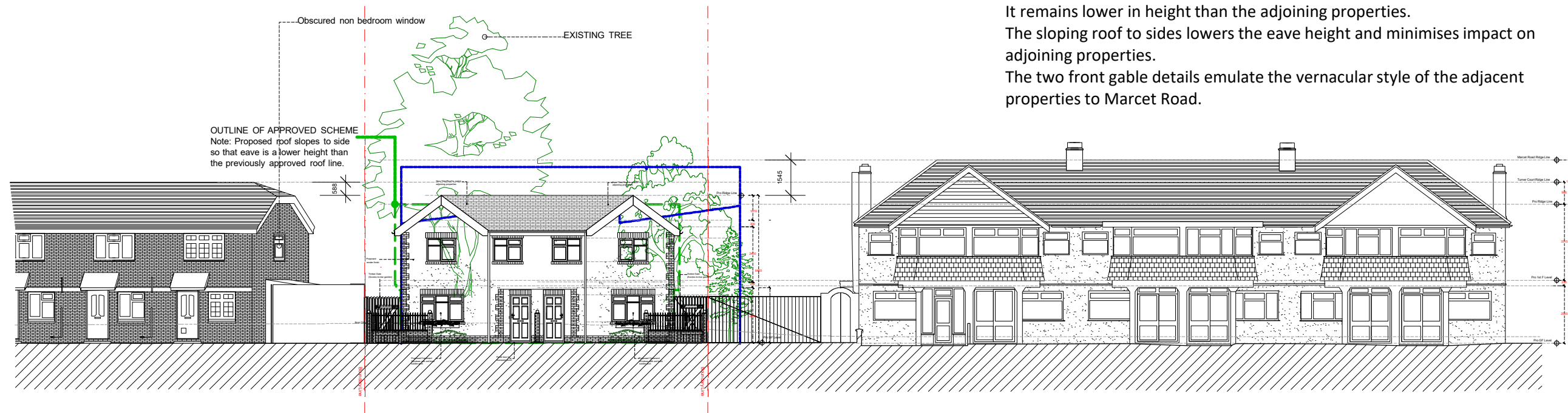


PROPOSED SITE ELEVATION WITH SECTION A-A

A previously refused application is outlined in BLUE.
 The currently approved outline is highlighted in GREEN.
 The proposed roof line is only 360mm higher than the approved scheme.
 It remains lower in height than the adjoining properties.
 The sloping roof to sides lowers the eave height and minimises impact on adjoining properties.
 The two front gable details emulate the vernacular style of the adjacent properties to Marcet Road.



PROPOSED SITE ELEVATION B-B

