

NOTES:

NAVIGATION KEY



UTILITY KEY

- ELECTRIC CABLE
- ELECTRIC & COMMS CABLE
- EARTHING ROD / CABLE
- TRAFFIC SIGNAL CABLE
- TELECOMS CABLE
- CABLE TELEVISION
- COMMUNICATION CABLE
- WATER PIPE
- GAS PIPE
- FOUL DRAINAGE
- CONTAMINATED SURFACE
- SURFACE DRAINAGE
- COMBINED DRAINAGE
- PUMPING MAIN
- FUEL PIPE
- VENT PIPE
- OFFSET FILL PIPE
- GAUGE LINE
- VAPOUR RECOVERY
- HEATING PIPES
- SERVICE DUCTS
- UNIDENTIFIED
- TRENCH SCAR
- GROUND DEPRESSION
- SURVEY BOUNDARY

ABBREVIATIONS

- | | | | |
|------|----------------------------------|--------|--------------------|
| AC | ASBESTOS CEMENT | LP | LAMP POST |
| AR | ASSUMED ROUTE | MH | MANHOLE |
| BB | BASE BEND | MW | MONITORING WELL |
| BD | BACKDROP | OH | OVERHEAD |
| BH | BOREHOLE | OSA | OFF SURVEY AREA |
| BR | BRICK | PE | POLYETHYLENE |
| BT | BT INSPECTION CHAMBER | PL | PLASTIC |
| CATV | CATV INSPECTION CHAMBER | PR | PIPE RISER |
| CBX | CONTROL BOX | PVC | POLYVINYL CHLORIDE |
| CI | CAST IRON | RE | RODDING EYE |
| CL | COVER LEVEL | RWP | RAIN WATER PIPE |
| CR | CABLE RISER | S/A | SOAKAWAY |
| CP | CATCHPIT | SI | SPUN IRON |
| D | DEPTH | ST | STOP TAP |
| DI | DUCTILE IRON | S.T | STEEL |
| DP | DOWN PIPE | SV | SLUICE VALVE |
| ED | EMPTY DUCT | SVP | SOIL VENT PIPE |
| EOSC | END OF TRENCH SCAR | TE | TRAPPED EXIT |
| EOT | END OF TRACE | TFR | TAKEN FROM RECORD |
| ER | EARTHING ROD | TL | TRAFFIC LIGHT |
| EP | ELECTRICITY POLE | TP | TELEGRAPH POLE |
| FH | FIRE HYDRANT | UTCCTV | UNABLE TO CCTV |
| FL | FLOOD LIGHT | UNL | UNABLE TO FIND |
| G | GULLY | UNL | UNABLE TO LIFT |
| GPR | GROUND PENETRATING RADAR | UTS | UNABLE TO SURVEY |
| GRP | GLASS REINFORCED PLASTIC | VC | VITRIFIED CLAY |
| GV | GAS VALVE | VP | VENT PIPE |
| HL | HIGH LEVEL | VR | VAPOUR RECOVERY |
| HOR | HEAD OF RUN | WL | WATER LEVEL |
| IC | INSPECTION CHAMBER | WM | WATER METER |
| IL | INVERT LEVEL | WO | WASH OUT VALVE |
| SWS | SURFACE WATER SEWER | | |
| CSWS | CONTAMINATED SURFACE WATER SEWER | | |
| PWS | FULL WATER SEWER | | |
| CWS | COMBINED WATER SEWER | | |

DISCLAIMER

ELECTRO-MAGNETIC TECHNIQUES AND/OR GROUND PENETRATING RADAR HAVE BEEN USED IN THE LOCATION OF UNDERGROUND SERVICES. THE RESULTS ARE NOT INFALLIBLE AND TRIAL EXCAVATIONS SHOULD BE CARRIED OUT TO CONFIRM SERVICE IDENTIFICATION, POSITIONS AND PARTICULARLY DEPTHS, WHERE THESE ARE CRITICAL. ALTHOUGH ALL REASONABLE EFFORT HAS BEEN MADE IN SEARCHING AVAILABLE RECORD DRAWINGS, THE COMPLETENESS OF THE UNDERGROUND SERVICES INFORMATION CANNOT BE GUARANTEED. THE METHODS OF SURVEY DOES NOT DIFFERENTIATE BETWEEN LIVE AND DEAD SERVICES AND AS SUCH ALL SERVICES SHOULD BE TREATED AS LIVE. WHERE SERVICES ARE NON-METALLIC POSITIONS MAY BE TAKEN FROM RECORDS, TRENCH SCARS & SURFACE DETAIL. WHERE QUOTED, DEPTH ESTIMATIONS ARE GENERALLY TO THE CENTRE OF THE SERVICE. DEPTHS TO GRAVITY SEWERS AND DRAINS ARE GENERALLY TO INVERT LEVELS UNLESS OTHERWISE STATED. PIPE SIZES WHICH CANNOT BE OBTAINED BY VISUAL SURVEY ARE TAKEN FROM RECORD DRAWINGS OR MARKER PLATES WHERE AVAILABLE. WHERE GROUND PENETRATING RADAR HAS BEEN USED IT WILL PRIMARILY HAVE BEEN TO IDENTIFY UNDERGROUND UTILITIES. IF POSSIBLE WE WILL ALSO IDENTIFY UNDERGROUND STRUCTURES/TANKS ETC. BUT CANNOT GUARANTEE TO HAVE LOCATED ALL SUCH ITEMS. THE USE OF RADAR CAN BE LIMITED BOTH BY SURFACE CONDITIONS AND ALSO BY SOIL TYPE. DEPTH ESTIMATES WOULD NOT NORMALLY BE PROVIDED FOR SERVICES LOCATED WITH GPR.

| REV | DATE | COMMENT | CAD |
|-----|------|---------|-----|
| | | | |

CLIENT: **BWB Consulting**

PROJECT: **Westgate
Dartford
DA1 2DJ**

TITLE: **Underground
Utility Survey**

AMETHYST SURVEYS LIMITED

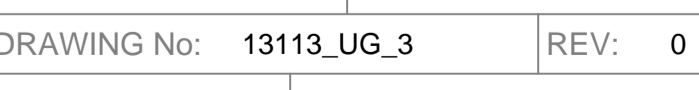
Unit 2 Davy Court, Central Park
Rugby, Warwickshire, CV23 0UZ
Tel: 01788 566740
Fax: 01788 571158
Email: enquiries@amethystsurveys.com
www.amethystsurveys.com

DATE: 11.06.18 JOB No: 13113

DRAWING No: 13113_UG_3 REV: 0

DRAWN: D.OT SURVEYED: JP

APPROVED: MD SCALE: 1:200 @ A1



Copyright Amethyst Surveys Ltd. 01/03/18