

Alveston Hill Cycleway

Statement of Community Involvement

September 2023

Introduction

The Statement of Community Involvement accompanies an application by South Gloucestershire Council (SGC) seeking planning permission (the application) for the development required in connection with the construction of a new segregated cycleway and footway on agricultural land as part of the Alveston Hill Cycleway Scheme. This document outlines:

- The engagement and consultation carried out to date on the scheme proposals; and
- How the proposals contained in the application have evolved as a result of the public engagement and consultation.

The primary focus of the pre-application consultation has been to engage stakeholders and the local community in the refinement of the proposals put forward in the application. This statement details the key issues emerging from comments received during consultation and provides the project team's responses to these.

Consultation Process

A number of different methods of consultation and engagement were employed during the scheme's preparation which are outline in this statement. This included a formal public consultation and smaller engagements with landowners and specific stakeholders.

Consultation Objectives

The main objectives of the consultation and engagement were to:

- Inform stakeholders and affected residents about scheme proposals
- Engage with community to get their comments on the scheme
- Address constructive feedback through iterative design process to fine tune the scheme where required and feasible
- Reporting back to inform stakeholders and communities how their input has informed the scheme

Public Consultation

Public consultation on the Alveston Hill Cycleway Scheme was included as part of a wider engagement exercise for the Outline Business Case for the Thornbury, A38 and Bradley Stoke Way Public Transport and Active Travel Improvements.

The consultation was held between 27 January 2022 and 23 March 2022 and focused on gathering feedback on the proposals, as well as current and future travel habits.

Before the public launch of the scheme early engagement was held with the council's leader and executive member for transport, as well as local members and parish and town councils along the route. Landowners were also engaged with at an early stage.

Communications Activity

Communications and publicity activity for the consultation included a corporate press release issued by the council (see Appendix 1) and a letter to all properties along the A38 part of the route (see Appendix 2), as well as properties on Alveston Hill (see Appendix 3).

The council's social media accounts and residents' newsletter were also used to promote the consultation (see examples in Appendix 4).

Engagement

The consultation had a dedicated webpage on the council's website which included maps of the proposals, a Statement of Reasons, Frequently Asked Questions, a Summary of Proposals, and a printable version of the survey (see Appendix 5). The survey was also available to complete online.

Three in-person drop-in events were held during the consultation period. They were held at:

- Turnberries, Thornbury.
- Kipling Room, Bradley Stoke Leisure Centre
- Old School House, Almondsbury

The events presented information boards on the proposals (see Appendix 6) and enabled members of the public to speak with the project team and ask questions. The events were attended by 147 members of the public.

Consultation Results

The consultation survey received 466 responses. A further 20 sets of comments were received via email and two parish councils provided feedback on the proposals.

When asked to what extent they supported the proposals for a Alveston Hill cycleway and footway 59% of respondents said they strongly supported the proposal and a further 16% said they somewhat supported the proposal.

The full results can read in the *A38 Public Engagement – Summary of Findings* document.

Engagement with Key Stakeholders

Ongoing engagement with landowners

Majority of the new segregated cycleway and footway elements of the Alveston Hill scheme require ownership of/access to third party land, either permanently or temporarily to enable the scheme to be constructed. All relevant landowners have been engaged at appropriate times throughout the development of the scheme proposals to date. This engagement has been undertaken by way of a number of appropriate means including email, telephone, letters, and face to face meetings.

Engagement with Circadian Trust

Circadian Trust are the operators of the Thornbury Leisure Centre close to the sections where private land is required. Circadian Trust has been contacted at various stage of the design by the Alveston Hill project team. This has helped the project team to gain insight to key information which have shaped the scheme design.

DRAFT

Appendices

Appendix 1 – press release

Have your say on active travel improvements from Thornbury to Bradley Stoke

18th February 2022

South Gloucestershire Council is encouraging people to have their say on suggestions to improve walking, cycling and travelling by bus on one of the area's major transport routes.

A consultation on proposals to improve routes around Thornbury, the A38 and Bradley Stoke is now open and lasts until midnight on Monday 14 March.

The initial proposals have been developed by the council to support sustainable travel in the following areas:

- Thornbury and the B4061 Alveston Hill between Thornbury and Alveston
- The A38 between Thornbury and Aztec West
- Bradley Stoke Way between Aztec West and Great Stoke Roundabout.

The suggestions include additional bus lanes at the Grovesend Road, Alveston Hill and Church Road junctions on the A38. The council also want to assess facilities provided at bus stops such as bus shelters to ensure that they meet basic standards for accessibility.

Additionally, the council are looking to create safer facilities to keep cyclists separated from traffic and pedestrians, including new cycle tracks and in some locations a reduction in speed limit.

The overall aim is to try to reduce the delays buses currently experience approaching key junctions along this route, particularly between junction 15 of the M5/Almondsbury Interchange and Thornbury.

During the six-week engagement, a series of public drop-in sessions will be held along the proposed route at Thornbury, Bradley Stoke and Almondsbury:

Monday 28 February between 2.30pm and 6pm – Turnberries, Thornbury

Tuesday 1 March between 3pm and 7pm – Kipling Room, Bradley Stoke Leisure Centre

Thursday 3 March between 3pm and 7pm – Old School House, Almondsbury.

These will provide opportunities for people to learn more about the proposals, meet the project team and ask questions.

South Gloucestershire Council's Cabinet Member for Regeneration, Environment and Strategic Infrastructure Cllr Steve Reade said: "To help address climate change and provide people with more choices for their journeys, we are aiming to make all types of travel in South Gloucestershire more sustainable.

"We want to transform the Thornbury, A38 and Bradley Stoke Way corridor to give residents and visitors better options for using buses, walking and cycling. Our suggestions include a whole host of improvements to bus stops, the creation of some new bus lanes and segregated cycling and walking facilities. We want to hear what people have to say about these proposals, so I encourage everyone to take part in our consultation."

These proposals are being developed by South Gloucestershire Council as part of a wider programme of bus and cycle investment across the West of England by the Combined Authority.

Funding for the improvements will be provided by the Combined Authority's funding from Central Government and will not impact on funds available in South Gloucestershire for other council services.

Feedback from local residents, businesses and organisations will be used to shape the proposals and then inform more detailed design work. An Outline Business Case will then be submitted to the Combined Authority in the summer to help secure funding to progress the scheme. This will be followed by a further 12-week public consultation to provide an

opportunity for people to comment on detailed proposals. Work could then start from late 2023 onwards and could take between 18 months to two years to complete in phased sections.

For further information on the proposals or to provide feedback visit www.consultations.southglos.gov.uk/A38

You can also get in touch with the council if you have any questions or would like to request a paper copy of the materials by emailing transportservices@southglos.gov.uk

Appendix 2 – Letter to residents (A38)

Dear Sir/Madam

Thornbury, A38 and Bradley Stoke travel improvement scheme

We are writing to ask for your feedback on our proposals to improve walking, cycling and travelling by bus from

Thornbury to Bradley Stoke. This includes the areas of:

- Thornbury and the B4061 Alveston Hill between Thornbury and Alveston
- The A38 corridor between Thornbury and Aztec West
- Bradley Stoke Way between Aztec West and Great Stoke Roundabout

We are currently developing a number of proposals to get more people out walking, cycling and using buses and we have launched an engagement period to ask people for their comments.

The aim is to try to reduce the delays buses currently experience approaching key junctions along this route, particularly between the M5 and Thornbury.

We also want to look at facilities provided at bus stops adding bus shelters and ensuring that they meet basic standards for accessibility. We believe improved junctions, bus lanes, better bus stops and pedestrian crossings will make buses more reliable and attractive to use.

We will also be looking at creating safer facilities to keep cyclists separated from traffic and pedestrians, including new cycle tracks. In some locations along the route this may mean reductions in speed limits.

We are inviting you to have your say as part of the current engagement period, which continues until midnight on Monday 14 March.

Timeline of proposals

These proposals are being developed by South Gloucestershire Council as part of a wider programme of bus and cycle investment across the West of England by the Combined Authority.

Funding for the improvements will be provided by the Combined Authority's funding from Central Government and will not impact on funds available in South Gloucestershire for other council services.

Feedback from local residents, businesses and organisations will be used to shape the proposals and then inform more detailed design work.

An Outline Business Case is expected to be submitted to the Combined Authority in the summer to help secure funding to progress the scheme.

This will be followed by a 12-week public consultation to provide an opportunity for people to comment on detailed proposals. Work could then start from late 2023 onwards, taking between 18 months to two years to complete in phased sections.

Further information

To find out more about the proposals or to provide feedback, visit www.consultations.southglos.gov.uk/A38.

We will be holding drop-in sessions in the areas of Thornbury, Bradley Stoke and Almondsbury. This is an opportunity to learn more about the proposals, meet the project team and ask questions. The sessions are as follows:

Monday, 28 February – 2.30pm-6pm – The Games Room, Turnberries, Thornbury

Tuesday, 1 March – 3pm-7pm - Kipling Room, Bradley Stoke Leisure Centre

Thursday, 3 March – 3pm-7pm - Old School House, Almondsbury

You can also get in touch with us if you have any questions or would like to request a paper copy of the proposals by emailing transportservices@southglos.gov.uk

Yours faithfully

Appendix 3 – Letter to residents (Alveston Hill)

Dear Sir/Madam

Thornbury, A38 and Bradley Stoke travel improvement scheme

We have recently undertaken a period of engagement on proposals to improve walking, cycling and travelling by bus from Thornbury to Bradley Stoke. This includes the areas of:

- Thornbury and the B4061 Alveston Hill between Thornbury and Alveston
- The A38 corridor between Thornbury and Aztec West
- Bradley Stoke Way between Aztec West and Great Stoke Roundabout

Unfortunately, due to an error, not all residents fronting Thornbury Hill, Thornbury Road, Alveston Hill and Bristol Road were advised through a letter on the proposals. We apologise for this oversight and have therefore extended the period for feedback until Thursday 24 March to allow you to review and comment on these proposals.

We are currently developing a number of proposals to get more people out walking, cycling and using buses and we have launched an engagement period to ask people for their comments.

The aim is to try to reduce the delays buses currently experience approaching key junctions along this route, particularly between the M5 and Thornbury.

We also want to look at facilities provided at bus stops adding bus shelters and ensuring that they meet basic standards for accessibility. We believe improved junctions, bus lanes, better bus stops and pedestrian crossings will make buses more reliable and attractive to use.

We will also be looking at creating safer facilities to keep cyclists separated from traffic and pedestrians, including new cycle tracks. In some locations along the route this may mean reductions in speed limits.

To find out more about the proposals or to provide feedback, visit www.consultations.southglos.gov.uk/A38.

Timeline of proposals

These proposals are being developed by South Gloucestershire Council as part of a wider programme of bus and cycle investment across the West of England by the Combined Authority.

Funding for the improvements will be provided by the Combined Authority's funding from Central Government and will not impact on funds available in South Gloucestershire for other council services.

Feedback from local residents, businesses and organisations will be used to shape the proposals and then inform more detailed design work.

An Outline Business Case is expected to be submitted to the Combined Authority in the summer to help secure funding to progress the scheme.

This will be followed by a 12-week public consultation to provide an opportunity for people to comment on detailed proposals. Work could then start from late 2023 onwards, taking between 18 months to two years to complete in phased sections.

Further information

You can get in touch with us if you have any questions or would like to request a paper copy of the proposals by emailing transportservices@southglos.gov.uk

Yours faithfully

Appendix 4 – Social media posts and newsletter

SGC South Gloucestershire Council
22 February 2022 · 🌐

🔔 DROP-IN SESSIONS 🔔

Come along to find out more about proposals to improve bus travel, as well as cycling and walking routes. 🚶🚲🚌

We want to tell you about proposals to improve active transport from Thornbury along the A38 to Bradley Stoke. 🗣️

This is your chance to meet the project team, look at the proposals and get your questions answered:

- * Monday 28 February – 2.30pm-6pm – The Garden Room, Turnberries, Thornbury
- * Tuesday 1 March – 3pm-7pm - Kipling Room, Bradley Stoke Leisure Centre
- * Thursday 3 March – 3pm – 7pm – Old School House, Almondsbury

For more information or to provide feedback, visit https://orlo.uk/SouthGlos_ZxxkG



📣 Boost this post to reach up to 1777 more people if you spend £14. [Boost post](#)

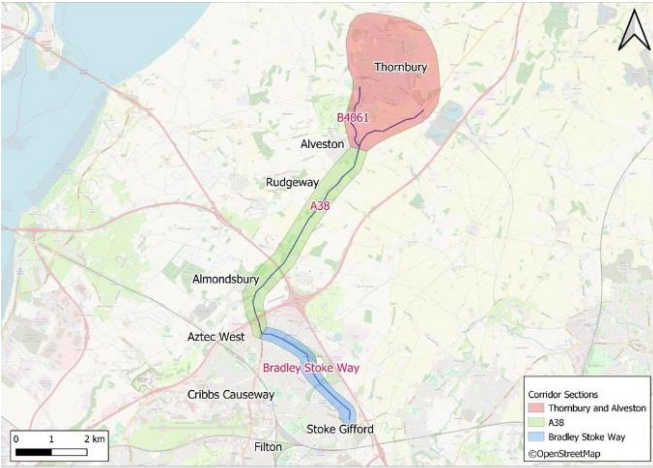
SGC South Gloucestershire Council
13 February 2022 · 🌐

🔔 Here's your chance to get involved to help shape our travel improvement proposals. 🗣️

🗣️ We want to improve walking, cycling, and bus travel from Thornbury to Bradley Stoke - and we want to know what you think.

🚲 We hope to introduce bus lanes and cycle tracks, improve bus stops, install pedestrian crossings and make road junctions safer. 🗣️

🗣️ We want to hear from you at https://orlo.uk/SouthGlos_xTN8S



📣 Boost this post to reach up to 1777 more people if you spend £14. [Boost post](#)

👍👎 9 31 comments 1 share

This is the week you can find out more about proposals to promote active travel from Thornbury to Bradley Stoke.

We are holding THREE drop-in sessions for you to hear more about our proposals, meet the project team and ask questions.

We are looking at introducing bus lanes and improving bus stops and adding new bike tracks to separate cyclists from traffic and pedestrians. The proposals also include installing pedestrian crossings and improving road junctions.

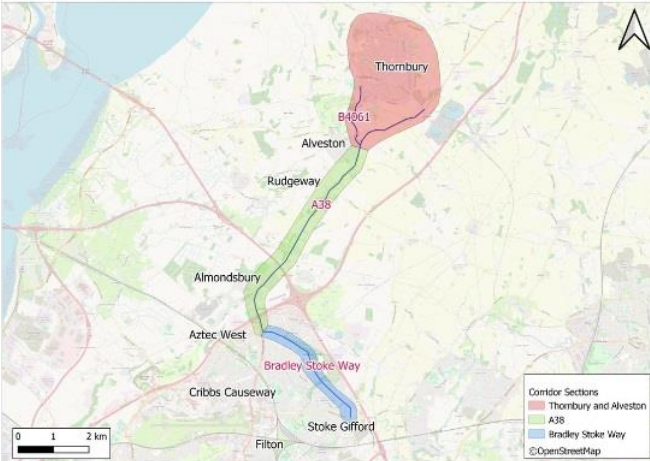
The first session is TOMORROW (Monday 28 February) from 2.30pm to 6pm at The Garden Room, Turnberries, Thornbury.

Then on Tuesday 1 March from 3pm to 7pm, we'll be at the Kipling Room in Bradley Stoke Leisure Centre.

And on Thursday 3 March, from 3pm to 7pm you'll find us at the Old School House in Almondsbury.

It would be great to see you there, everyone is welcome!

Visit https://orlo.uk/SouthGlos_dPEwB for more information.



📣 Boost this post to reach up to 1777 more people if you spend £14.

Boost post

👍👍 6

18 comments 9 shares

🕒 Time is running out to have your say on proposals to introduce bus lanes and cycle tracks in the Thornbury, Almondsbury and Bradley Stoke area.

🗣️ We want to hear from you before the engagement period closes on Monday 14 March.

📄 Be quick, let us know what you think about the proposals to increase active travel on one of our busiest commuter routes.

👉 Tell us at https://orlo.uk/SouthGlos_mQbEJ



📣 Boost this post to reach up to 1777 more people if you spend £14.

Boost post

👍 4

11 comments 9 shares

Now is the time to find out more about proposals for bus lanes, cycle lanes and new bus stops along the A38 & Bradley Stoke Way. This week we have drop-in sessions in Thornbury, Bradley Stoke and Almondsbury. Will we see you there?

Find out more: orlo.uk/SouthGlos_oTSKW



3:00 pm · 27 Feb 2022

Have your say: travel improvements



We want to hear your thoughts on our proposals to improve walking, cycling and bus travel on one of the area's major transport routes, around Thornbury, the A38 and Bradley Stoke. Come along to one of our drop-in sessions where you can learn more, meet the project team and ask questions:

- Monday 28 February – 2.30pm-6pm at Turnberries Community Centre, Thornbury
- Tuesday 1 March – 3pm – 7pm at Kipling Room, Bradley Stoke Leisure Centre
- Thursday 3 March – 3pm – 7pm at the Old School House, Almondsbury

Your feedback will help shape the plans, ahead of more detailed proposals being announced later in the year. Find out more [here](#).

Appendix 5 – webpage screengrab

South Gloucestershire Council
Delivering for you

[Apply](#) [Report](#) [Pay](#) [Resident](#) [Business](#) [Visitor](#) [Council](#)

[Home](#) > [Council and democracy](#) > [Consultations](#) > [Thornbury, A38 and Bradley Stoke Way improvements](#)

Thornbury, A38 and Bradley Stoke Way improvements

Thornbury, A38 and Bradley Stoke Way improvements

This initial engagement has now closed. We are currently asking local people to share their views on the specifics of the schemes on the A38 and Bradley Stoke Way. To review the proposals and give your feedback, visit the consultation page at [Thornbury to North Bristol Sustainable Transport Corridor improvements - South Gloucestershire Online Consultations \(southglos.gov.uk\)](#)

This consultation has now closed and our consultation report is now available.

Timeline

- Opened
27 Jan 2022 at 15:00
- Closed
23 Mar 2022 at 23:59
- Response Published
28 Sep 2022

Summary of Results

- [A38 Public Engagement - Summary of Findings](#)

Consultation Documents

- [Thornbury, A38 and Bradley Stoke Way Improvements - Summary of Proposals](#)
- [Proposals for Thornbury and Alveston](#)
- [Proposals for the A38 between Alveston and M5 Junction 18](#)
- [Proposals for Bradley Stoke Way](#)
- [Thornbury, A38 and Bradley Stoke Way Improvements - Statement of Reasons](#)
- [Thornbury, A38 and Bradley Stoke Way Improvements - Frequently Asked Questions](#)
- [Printable Questionnaire](#)

Appendix 6 – Examples of information boards

Alveston Hill Cycleway

Options being considered include:

1. Resurfacing of existing off-road route from Streamleaze to the Leisure Centre
2. Upgrade of the footway along Bristol Road between Midland Way and the Leisure Centre to provide a shared use path to provide a more direct link to the High Street
3. Provision of a new segregated walking and cycling path around the Leisure Centre
4. Off-road segregated walking and cycling path from the Leisure Centre to Alveston Hill
5. New walking and cycling crossing on Alveston Hill. Cycleway then continues along western side of B4061 to the A38 (see next page for details). The route will include sections of segregated path and shared use path.



A38 and B4061 at Alveston

These proposals include:

1. Widening of Alveston Hill junction and extension of northbound traffic lane for left turn traffic, with 2-way cycle track on western side of carriageway
2. 2-way cycle track and footway to run along western side of B4061 between Alveston Hill and the A38 (some sections will be shared use due to space constraints)
3. Pedestrian and cycling crossings of Down Road, Alveston Hill, David's Lane, The Street and A38
4. Improved bus stop facilities at The Ship and David's Lane bus stops.
5. Cycle track to the north of Hyundai Garage is likely to comprise 1-way tracks on each side of the A38 with improved footway on the eastern side linking Alveston with Grovesend Road
6. Speed limit reduced to 50 mph north of Hyundai Garage to improve safety and support increased walking and cycling. The 40 mph section may also be extended slightly to the north.

