

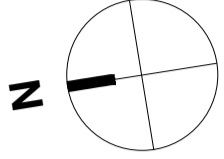
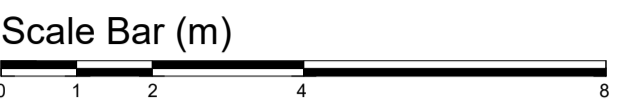
The use of this data by the recipient acts as an agreement of the following statements:
Do not use this data if you do not agree with any of the following statements:

Ryder Architecture has co-ordinated relevant information received from third parties, but are not responsible for the content of the information received from others.

The controlled version of this drawing should be viewed in DWG or PDF format not DWG or other formats. All prints of this drawing must be made in full colour.

Where this drawing has been based upon Ordnance Survey data, it has been reproduced under the terms of Ryder Licence No. 100000144. Reproduction of this drawing in whole or in part is prohibited without the prior permission of Ordnance Survey.

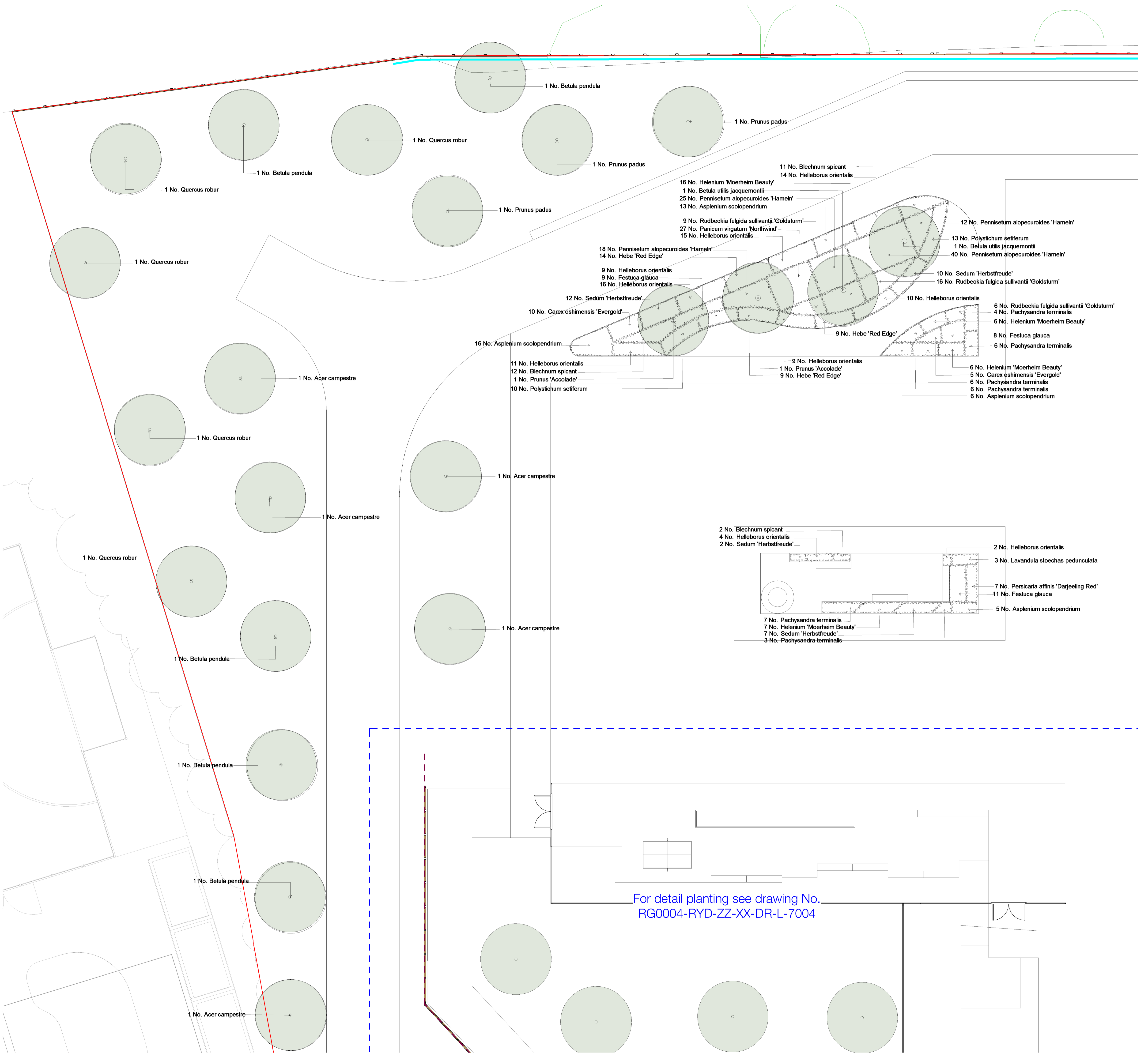
Do not scale the drawing. Use figured dimensions in all cases. Check all dimensions on site. Report any discrepancies in writing to Ryder before proceeding.



LEGEND



Proposed trees



1 No. *Betula pendula*

1 No. *Prunus padus*

1 No. *Quercus robur*

1 No. *Prunus padus*

1 No. *Betula pendula*

1 No. *Quercus robur*

1 No. *Prunus padus*

1 No. *Quercus robur*

1 No. *Acer campestre*

1 No. *Quercus robur*

1 No. *Acer campestre*

1 No. *Quercus robur*

1 No. *Acer campestre*

1 No. *Betula pendula*

1 No. *Betula pendula*

1 No. *Betula pendula*

1 No. *Acer campestre*

11 No. *Blechnum spicant*
14 No. *Helleborus orientalis*

16 No. *Helenium 'Moerheim Beauty'*
1 No. *Betula utilis jacquemontii*
25 No. *Pennisetum alopecuroides 'Hameln'*
13 No. *Asplenium scolopendrium*

9 No. *Rudbeckia fulgida sullivantii 'Goldsturm'*
27 No. *Panicum virgatum 'Northwind'*
15 No. *Helleborus orientalis*

18 No. *Pennisetum alopecuroides 'Hameln'*
14 No. *Hebe 'Red Edge'*

9 No. *Helleborus orientalis*
9 No. *Festuca glauca*
16 No. *Helleborus orientalis*

12 No. *Sedum 'Herbstfreude'*
10 No. *Carex oshimensis 'Evergold'*

16 No. *Asplenium scolopendrium*

11 No. *Helleborus orientalis*
12 No. *Blechnum spicant*
1 No. *Prunus 'Accolade'*
10 No. *Polystichum setiferum*

9 No. *Helleborus orientalis*
1 No. *Prunus 'Accolade'*
9 No. *Hebe 'Red Edge'*

12 No. *Pennisetum alopecuroides 'Hameln'*

13 No. *Polystichum setiferum*
1 No. *Betula utilis jacquemontii*
40 No. *Pennisetum alopecuroides 'Hameln'*

10 No. *Sedum 'Herbstfreude'*
16 No. *Rudbeckia fulgida sullivantii 'Goldsturm'*

6 No. *Rudbeckia fulgida sullivantii 'Goldsturm'*
4 No. *Pachysandra terminalis*
6 No. *Helenium 'Moerheim Beauty'*

8 No. *Festuca glauca*
6 No. *Pachysandra terminalis*

6 No. *Helenium 'Moerheim Beauty'*
5 No. *Carex oshimensis 'Evergold'*
6 No. *Pachysandra terminalis*
6 No. *Pachysandra terminalis*
6 No. *Asplenium scolopendrium*

2 No. *Blechnum spicant*
4 No. *Helleborus orientalis*
2 No. *Sedum 'Herbstfreude'*

2 No. *Helleborus orientalis*
3 No. *Lavandula stoechas pedunculata*

7 No. *Persicaria affinis 'Darjeeling Red'*
11 No. *Festuca glauca*
5 No. *Asplenium scolopendrium*

7 No. *Pachysandra terminalis*
7 No. *Helenium 'Moerheim Beauty'*
7 No. *Sedum 'Herbstfreude'*
3 No. *Pachysandra terminalis*

For detail planting see drawing No. RG0004-RYD-ZZ-XX-DR-L-7004

C2	Issued for planning	AOL	AOL	14/12/23
C1	Issued for Stage 5	TJ	GS	07/10/22
Rev	Description	Drawn	Checked	Date

Suability
Construction Approval
Project
Derbyshire Healthcare NHS Foundation Trust
New Mental Health Accommodation - Chesterfield (Landscape)
Chesterfield Hospital, Derbyshire North
Drawing
Planting Plan Sheet 1

Drawing Number	Project ID	Originator	Zone	Level	Type	Role	Number
RG0004	- RYD	- ZZ	- XX	- DR	- L	- 7001	
Project Number	Scale at	Status	Revision				
10443-00	1 : 100	S4	C2				