



LEGEND

SURFACING

- Coloured tarmac to maintenance path to engineers specification. Colour: buff.
- Proposed tarmac surface to engineers specification.
- Q25 31 Concrete flag paving system. Manufacturer: Marshalls or similar approved. Product reference: Modal Paving. Colour: light and mid grey. BS EN 1338: 2003 BS EN 1339: 2003
- Q25 33 Concrete paving blocks to Parking Bays and Drop off. Manufacturer: Marshalls or similar approved. Product: Modal prisma permeable paving.
- Q23 225 Silver grey resin bound gravel. Manufacturer: Addagrip Terraco or similar approved. Sub base to engineers details.
- Q23 225 Buff resin bound gravel. Manufacturer: Addagrip Terraco or similar approved. Sub base to engineers details.
- Q26 230 Proposed safety surface area for external sports activities.
- Proposed reinforced grass for fire access. Bodpave.
- L37 310 Steps outside plant room. Marshalls precast concrete step unit 1000 x 400 x 150mm. colour: silver grey. Handrail to steps: L37 151 in stainless steel.
- Q25 54 Tactile paving for pedestrian crossings into a road.
- Q25 55 Hazard warning paving to top and base of steps.

FENCING

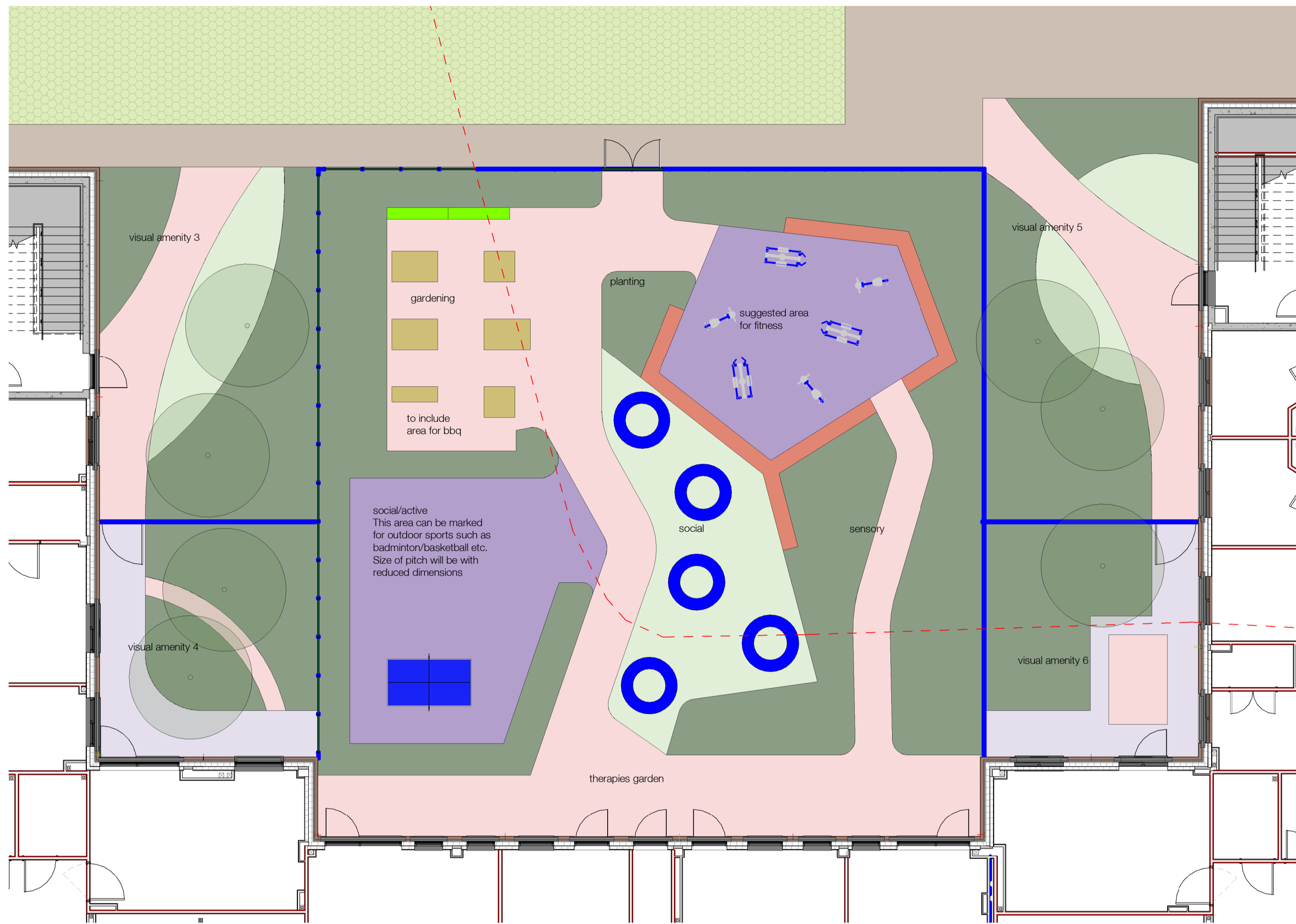
- Q40 126A Security fences 2.4m high with gates.
- Q40 126 Security fence with gates 4.2m high to Section 136, Seclusion Gardens and De-Escalation Gardens.
- Q40 210 Post and rail timber fence 1.4m high to east of site.
- Q40 210 Timber knee rail.

FURNITURE

- Q50 190 Proposed bollards.
- Q50 209 & Q25 31 Bin Compound and paving system. Manufacturer: Langley Design or similar approved. Product reference: Sheldon bin store SBS303. Type: Enclosed bin compound with roof. Steel structure: galvanneal. Timber: treated redwood. Roof: 16mm multivall polycarbonate roofing system. Finish: as manufactured. Size: Bespoke size to suit bin units (645mm x 350mm x 260mm (H)).
- Q50 210, 211 & Q25 31 Proposed secured cycle shelter, cycle hoops and paving system. Manufacturer: Langley Design or similar approved. Product reference: Sheldon cycle shelter SC3310. Type: Semi enclosed cycle parking compound. Three sides clad in timber. Steel structure: galvanneal. Timber: treated redwood. Finish: as manufactured. Size: Bespoke size to suit number of cycle spaces 4000mm x 3100mm x 2500mm (H). Capacity: 3 cycle hoops to hold 4 bikes.
- Q50 210 Proposed cycle hoops within secured cycle shelter. Manufacturer: Marshalls. Product reference: Geo cycle stand. Type: Single stands. Material: Stainless steel 3.
- Q50 220 Benches within Public and Entrance Spaces. Manufacturer: Artform Urban Furniture or similar approved. Product reference: MultiCITY bench. Length: Varies.
- Q50 221 Looped Benches Within Courtyards. Manufacturer: Artform Urban Furniture or similar approved. Product reference: Loop. Material: Polyethylene. Size: 1800mm diameter. Colour: Blue. Finish: Textured.
- Q50 222 Straight Benches within Courtyards. Manufacturer: Artform Urban Furniture or similar approved. Product reference: Loop Line. Length: 2000mm. Material: Polyethylene. Colour: Green. Finish: Textured.
- Q50 223 Curved Benches within Courtyards. Manufacturer: Artform Urban Furniture or similar approved. Product reference: Loop Arc. Length: 2015mm. Material: Polyethylene. Colour: Green. Finish: Textured.
- Q50 225 Seating within Courtyards. Manufacturer: Artform Urban Furniture or similar approved. Product reference: Hippo Q50. Dimensions: 500mmx400mm. Material: Polyethylene. Colour: Light Blue. Finish: Textured.
- Q50 226 Continuous bench to Therapies Garden. Manufacturer: Artform Urban Furniture or similar approved. Product reference: Cobra Bench. Dimensions: 453mm high, 493mm deep, 2193 module length. Overall length: 23.6m. Material: Timber top and steel support. Finish: Treated hardwood and steel powder coated RAL 7012.
- Q50 230 Tables Within Courtyards. Manufacturer: Artform Urban Furniture or similar approved. Product reference: Loop Table. Material: Polyethylene. Size: 1300mm diameter. Colour: Blue. Finish: Textured.
- Q50 231 Table Tennis. Manufacturer: Cornilleau or similar approved. Product reference: Cornilleau 510 Table. Size: Bed 1520mm x 2750mm. Surface 7mm resin laminate. Height: 77cm. Colour: Blue.
- Q50 232 Table within Seclusion & De-escalation gardens. Manufacturer: Artform Urban Furniture or similar approved. Product reference: Av-L-A-C Table. Size: 2200mm length, 1860mm wide, 44mm / 744mm tall. Material: Timber top and steel support.
- Q50 240 Litter bins to public areas. Manufacturer: Artform Urban Furniture. Product reference: Box (100L). Material: Steel. Colour and Finish: Galvanized and polyester powder coated RAL 7012.
- Q50 250 Fitness Equipment. Note: Total number and Equipment to be confirmed with Trust.
- Q31 292 Prefabricated plant containers. Manufacturer: Euro Planters. Bespoke item, all planters to be 1m high. Material: GRP and timber. Colour: GRP planter to be RAL 7016 Anthracite grey.
- Q31 292 Timber Benches as part of planter. Manufacturer: Euro Planters. Bespoke item, all benches to be 450mm above FGL. Material: Timber.
- Q31 298 Timber plant planters. Manufacturer: Taylor Made Planters or equivalent. Product: Wooden Vegetable Planters with raised legs. Size: 1000 x 1000 x 500mm; 1000 x 500 x 500mm; 1500 x 1000 x 500mm. Material/Finish: Natural finish. To BS EN 942.
- L37 150 Proposed handrail to external ramp L37 150.
- Sail canopy. Canopies to be on post. Details by others.
- Geogrow retaining structure. Details by Geogrow specialist.
- Tactile paving for pedestrian crossings into a road.
- Proposed external retaining wall details to engineers.

SOFITWORKS

- Q30 310 Proposed Grass Seed to Visual Amenity Gardens. Mixture: Geminal Amenity A24 Wear and Tear. Supplier: Emragalle Seeds. Mixture: EMSF.
- Ornamental planting. REFER TO PLANTING PLANS.
- Proposed trees.
- Existing trees retained.
- Existing trees to be removed.
- Existing woodland to be removed.



- Therapies Garden
- 2 Loop line Q50 222
- 1 Table tennis Q50 231
- 6 Timber planters
- 6 Fitness equipment Q50 250
- 5 Loop bench Q50 221
- Timber seating around fitness area 23.6m length Q50 226

Equipment necessary for badminton / basketball

C4	Issued for planning	AOL	AOL	MG	14/12/23
C3	Retaining walls to the east and south omitted and replaced with a Geogrow structure. Position of post and rail fence amended to suit location of Geogrow structure. Layout of maintenance path to the east revised to suit position of Geogrow. Double gate added to Acute garden. External furniture raised planters for acute gardens revised to facilitate drainage. Removal of existing gas house and timber. Tactile paving installed for crossings. Levels along eastern boundary revised to suit geogrow structure. Artificial grass omitted. Levels, external furniture and softscape on courtyards revised to allow drainage into proposed gullies, surface for courtyard confirmed by BIP to be not permeable.	AOL	AOL	MG	24/10/23

C2	Issued for Stage 5, additional labels and notes added to drawings.	TJ	GS	MG	28/10/22
C1	Issued for Stage 5	TJ	GS	MG	07/10/22
P1	Issued for Costing	AOL	KPE	MG	19/01/22

Rev	Description	Drawn	Checked	Date

Subsidiary
Construction Approval

Project
Derbyshire Healthcare NHS Foundation Trust
New Mental Health Accommodation - Chesterfield (Landscape)
Chesterfield Hospital, Derbyshire North

Drawing
Courtyards Sheet 2

Project ID	Originator	Zone	Level	Type	Role	Number
RG0004	- RYD	- ZZ	- XX	- DR	- L	- 2103

Project Number	Scale at	Status	Revision
10443-00	1 : 100	S4	C4 .0