

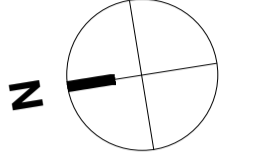
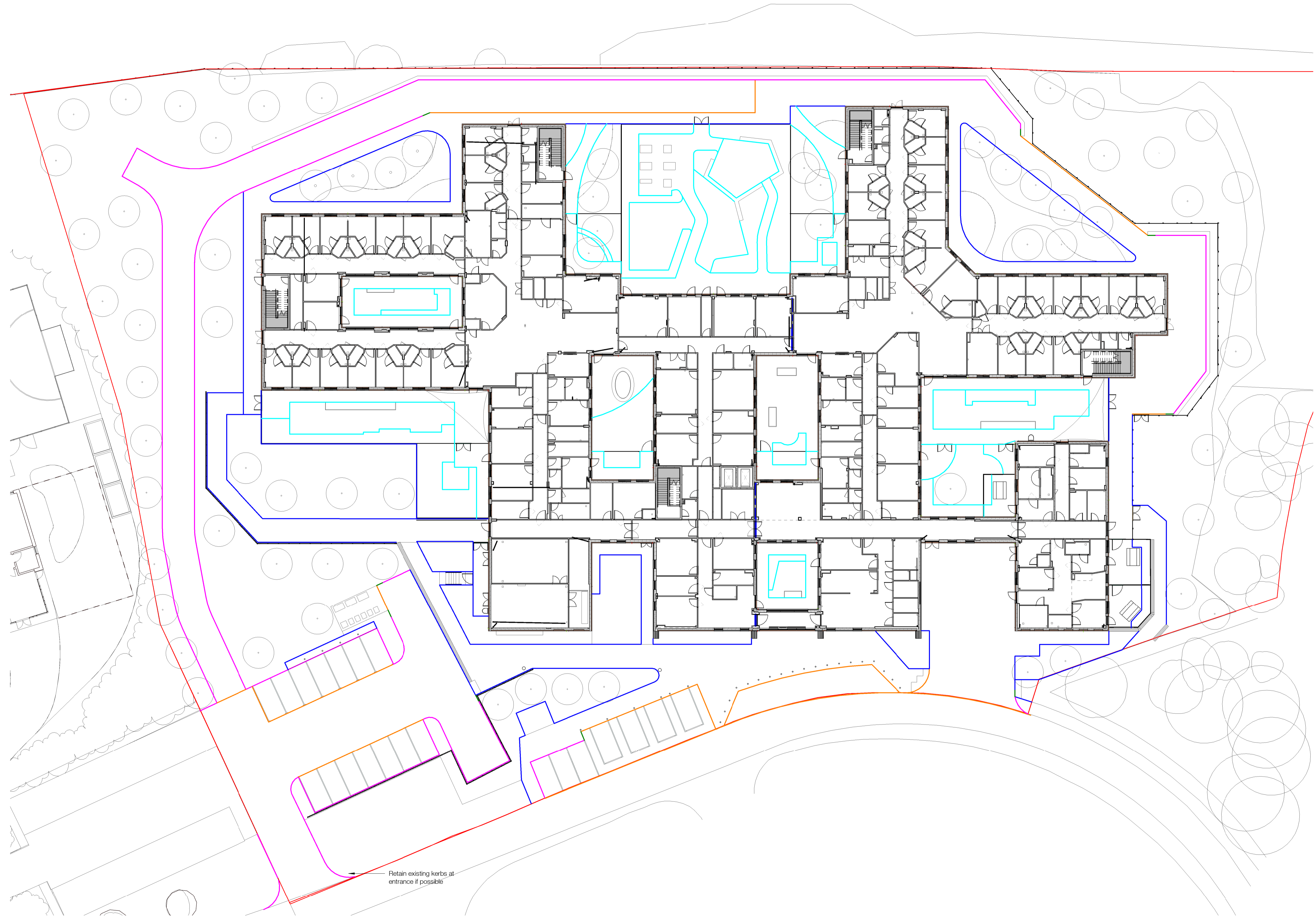
The use of this data by the recipient acts as an agreement of the following statements:
Do not use this data if you do not agree with any of the following statements:

Flyder Architecture has co-ordinated relevant information received from third parties, but are not responsible for the content of the information received from others.

The controlled version of this drawing should be viewed in DWG or PDF format not DWF or other formats. All prints of this drawing must be made in full colour.

Where this drawing has been based upon Ordnance Survey data, it has been reproduced under the terms of Flyder Licence No. 100000144. Reproduction of this drawing in whole or in part is prohibited without the prior permission of Ordnance Survey.

Do not scale the drawing. Use figured dimensions in all cases. Check all dimensions on site. Report any discrepancies in writing to Flyder before proceeding.



- Site Boundary
- Q10 110 Proprietary precast Kerb
Manufacturer: Marshalls or similar approved.
Reference: Upstand kerb
Standard: Laid in accordance with BS 7533-6: 1999
Size 145x255x915mm
Colour: Silver grey
Finish: Textured surface
- Q10 110 Flush kerb.
Manufacturer: Marshalls or similar approved.
Standard: Laid in accordance with BS 7533-6: 1999
Size 145x255x915mm
Colour: Silver grey
Finish: Textured surface
- Q10 110 Transition drop kerb.
Manufacturer: Marshalls or similar approved.
Standard: Laid in accordance with BS 7533-6: 1999
Colour: Silver grey
Finish: Textured surface
- Q10 112 Precast concrete PinKerb
Manufacturer: Marshalls or similar approved.
Reference: flush pin kerb
Standard: to BS EN 1340
Size 50 x 150 x 915mm
Colour: Grey
Finish: As cast
- Q26 430 Metal Edges
Manufacturer: Kinley or similar approved
Reference: ExcelEdge AluExcel Aluminium angle edging.
Size: Aluexcel 75 (top edge 6.5mm thick)
Type: Aluminium
Finish: Mill

Retain existing kerbs at entrance if possible

C4 Updates made following comments received from Vinci on 8.12.23 AOL AOL 14/12/23

C3 Retaining walls to the east and south omitted and replaced with a Geogrow structure. Position of post and rail fence amended to suit location of Geogrow structure. Layout of maintenance path to the east revised to suit position of Geogrow. Double gate added to Acute garden. External furniture raised planters for acute gardens revised to facilitate drainage. Removal of existing gas house and timber. Facilitate paving indicates for crossings. Levels along eastern boundary revised to suit geogrow structure. Artificial grass omitted. Levels, external furniture and softlandscape on courtyards revised to allow drainage into proposed gullies. Surface for courtyard confirmed by 8:4p to be not permeable.

C2 Issued for Stage 5, additional labels and notes added to drawings. TJ MG 28/10/22

C1 Issued for Stage 5 TJ GS 07/10/22

Rev	Description	Drawn	Checked	Date

Subsidiary
Construction Approval

Project
Derbyshire Healthcare NHS Foundation Trust
New Mental Health Accommodation - Chesterfield (Landscape)
Chesterfield Hospital, Derbyshire North

Drawing
Kerbs Location Plan

Drawing Number	Project ID	Originator	Zone	Level	Type	Role	Number
10443-00	RYD	ZZ	XX	DR	L		2130

Project Number	Scale at A1	Status	Revision
10443-00	1 : 250	S4	C4 .0