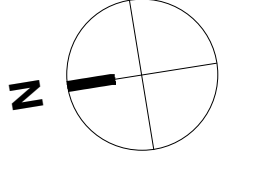
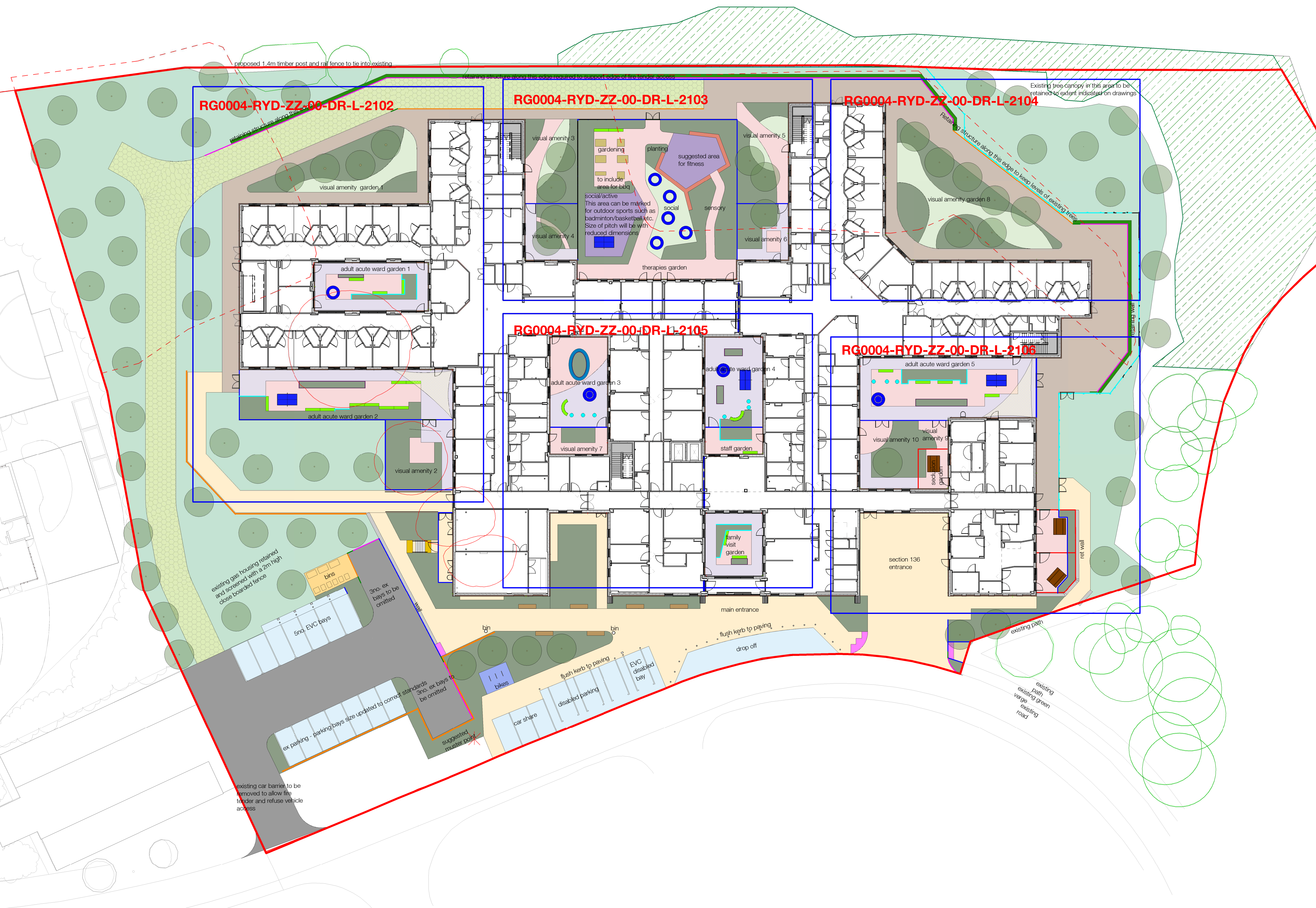


The use of this data by the recipient acts as an agreement of the following statements:  
 Do not use this data if you do not agree with any of the following statements:  
 Ryder Architecture has co-ordinated relevant information received from third parties, but are not responsible for the content of the information received from others.  
 The controlled version of this drawing should be viewed in DWG or PDF format not DWG or other formats. All prints of this drawing must be made in full colour.  
 Where this drawing has been based upon Ordnance Survey data, it has been reproduced under the terms of Ryder Licence No. 100000144. Reproduction of this drawing in whole or in part is prohibited without the prior permission of Ordnance Survey.  
 Do not scale the drawing. Use figured dimensions in all cases. Check all dimensions on site. Report any discrepancies in writing to Ryder before proceeding.



**LEGEND**  
 Site Boundary

C4	Updates made following comments received from Vinci on 8.12.23	ADL	ADL	14/12/23
C3	Retaining walls to the east and south omitted and replaced with a Geogrow structure. Position of post and rail fence amended to suit location of Geogrow structure. Layout of maintenance path to the east revised to suit position of Geogrow. Double gate added to Acute garden. External furniture raised planters for acute gardens revised to facilitate drainage. Removal of existing gate house and timber. Tactile paving indicates for crossings. Levels along eastern boundary revised to suit geogrow structure. Artificial grass omitted. Levels, external furniture and softscape on courtyards revised to allow drainage into proposed gullies. Surface for courtyard confirmed by IIP to be not permeable.	ADL	ADL	24/10/23
C2	Issued for Stage 5, additional labels and notes added to drawings.	TJ	MG	28/10/22
C1	Issued for Stage 5	TJ	CS	07/10/22
P5	Areas in rev clouds highlight changes since Nov planning submission	ADL	KPE	09/06/22
P4	Issued for Costing	ADL	KPE	19/01/22
P3	Issued for Costing	KPE	ADL	20/12/21
P2	Issued for Planning	KPE	ADL	25/11/21
P1	Site plan updates following review from water design team. Issued for planning	KPE	ADL	18/11/21
Rev	Description	Drawn	Checked	Date

**Subsidiary**  
 Construction Approval

**Project**  
 Derbyshire Healthcare NHS Foundation Trust  
 New Mental Health Accommodation - Chesterfield (Landscape)  
 Chesterfield Hospital, Derbyshire North

**Drawing**  
 Courtyards Overview

<b>Drawing Number</b>	<b>Project ID</b>	<b>Originator</b>	<b>Zone</b>	<b>Level</b>	<b>Type</b>	<b>Role</b>	<b>Number</b>
10443-00	RG0004	RYD	ZZ	XX	DR	L	2101
<b>Project Number</b>	<b>Scale at A1</b>	<b>Status</b>	<b>Revision</b>				
10443-00	1 : 250	S4	C4	.0			