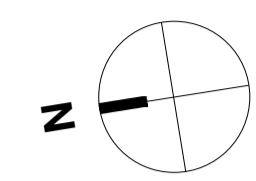
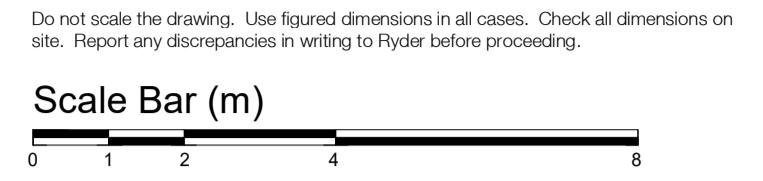


The use of this data by the recipient acts as an agreement of the following statements:
 Do not use this data if you do not agree with any of the following statements:
 Ryder Architecture has co-ordinated relevant information received from third parties, but are not responsible for the content of the information received from others.

The controlled version of this drawing should be viewed in DWG or PDF format not DWG or other formats. All prints of this drawing must be made in full colour.
 Where this drawing has been based upon Ordnance Survey data, it has been reproduced under the terms of Flyder Licence No. 100000144. Reproduction of this drawing in whole or in part is prohibited without the prior permission of Ordnance Survey.

Do not scale the drawing. Use figured dimensions in all cases. Check all dimensions on site. Report any discrepancies in writing to Flyder before proceeding.



- LEGEND**
- SOFTWORKS**
- Q30 310 Proposed Grass Seed to Visual Amenity Gardens
Mixture: Geminal Amenity A24 Wear and Tear
 - Q30 312 Wildflower Seed Mixture
Supplier: Emorsgate Seeds
Mixture: EMSF
 - Ornamental planting
REFER TO PLANTING PLANS
 - Proposed trees
 - Existing trees retained
 - Existing trees to be removed
 - Existing woodland to be removed

- Coloured tarmac to maintenance path to engineers specification. Colour: buff.
 - Proposed tarmac surface to engineers specification.
 - Q25 31 Concrete flag paving system
Manufacturer: Marshalls or similar approved
Product reference: Modal Paving, Colour: light and mid grey, BS EN 1338: 2003/ BS EN 1338: 2003
 - Q25 33 Concrete paving blocks to Parking Bays and Drop off
Manufacturer: Marshalls or similar approved
Product: Modal pavers permeable paving
 - Q23 225 Silver grey resin bound gravel
Manufacturer: Adkagrip Tarmac or similar approved
Sub base to engineers details
 - Q23 225 Buff resin bound gravel
Manufacturer: Adkagrip Tarmac or similar approved
Sub base to engineers details
 - Q28 230 Proposed safety surface area for external sports activities
 - Proposed reinforced grass for fire access
Bodpave
 - L37 150 Steps outside plant room
Marshalls precast concrete step unit 1000 x 400 x 150mm
colour: silver grey
Handrail to steps: L37 151 in stainless steel
 - Q25 54 Tactile paving for pedestrian crossings into a road
 - Q25 55 Hazard warning paving to top and base of steps
- FENCING**
- Q40 126A Security fences 2.4m high with gates
 - Q40 126 Security fence with gates 4.2m high to Section 136, Seclusion Gardens and De-Escalation Gardens
 - Q40 210 Post and rail timber fence 1.4m high to east of site
 - Q40 210 Timber knee rail
- FURNITURE**
- Q50 190 Proposed bollards
 - Q50 209 & Q25 31 Bin Compound and paving system
Manufacturer: Langley Design or similar approved
Product reference: Sheldon bin store SBS303
Type: Enclosed bin compound with roof
Steel structure: galvanised
Timber: treated redwood
Roof: 16mm multiwall polycarbonate roofing system
Finish: as manufactured
Size: Bespoke size to suit bin units 6445mm x 3500mm x 2600mm (h)
 - Q50 210, 211 & Q25 31 Proposed secured cycle shelter, cycle hoops and paving system.
Manufacturer: Langley Design or similar approved
Product reference: Sheldon cycle shelter SCS310
Type: Semi enclosed cycle parking compound.
Three sides clad in timber
Steel structure: galvanised
Timber: treated redwood
Finish: as manufactured
Size: Bespoke size to suit number of cycle spaces 4000mm x 3100mm x 2600mm (h)
Capacity: 3 cycle hoops to hold 4 bikes
 - Q50 210 Proposed cycle hoops within secured cycle shelter.
Manufacturer: Marshalls
Product reference: Geo cycle stand
Type: Single stands
Material: Stainless steel 3
 - Q50 220 Benches within Public and Entrance Spaces
Manufacturer: Artform Urban Furniture or similar approved.
Product reference: MultiGITY bench
Length: Varies
 - Q50 221 Looped Benches Within Courtyards
Manufacturer: Artform Urban Furniture or similar approved.
Product reference: Loop
Material: Polyethylene
Size: 1800mm diameter
Colour: Blue
Finish: Textured
 - Q50 222 Straight Benches within Courtyards
Manufacturer: Artform Urban Furniture or similar approved.
Product reference: Loop Line
Length: 2000mm
Material: Polyethylene
Colour: Green
Finish: Textured
 - Q50 223 Curved Benches within Courtyards
Manufacturer: Artform Urban Furniture or similar approved.
Product reference: Loop Arc
Length: 2015mm
Material: Polyethylene
Colour: Green
Finish: Textured
 - Q50 225 Seating within Courtyards
Manufacturer: Artform Urban Furniture or similar approved.
Product reference: Hoop 500
Dimensions: 500mm x 400mm
Material: Polyethylene
Colour: Light Blue
Finish: Textured
 - Q50 226 Continuous bench to Therapies Garden
Manufacturer: Artform Urban Furniture or similar approved.
Product reference: Cobra Bench
Dimensions: 453mm high, 493mm deep, 2193 modular length
Overall length: 23.6m
Material: Timber top and steel support
Finish: Treated hardwood and steel powder coated RAL 7012
 - Q50 230 Tables Within Courtyards
Manufacturer: Artform Urban Furniture or similar approved.
Product reference: Loop Table
Material: Polyethylene
Size: 1130mm diameter
Colour: Blue
Finish: Textured
 - Q50 231 Table Tennis
Manufacturer: Cornilleau or similar approved.
Product reference: Cornilleau S10 Table
Size: Bed 153cm x 275cm, Surface 7mm resin laminate
Height: 77cm.
Colour: Blue.
 - Q50 232 Table within Seclusion & De-escalation gardens
Manufacturer: Artform Urban Furniture or similar approved.
Product reference: AL L-A-C Table
Size: 2200mm length, 1800mm wide, 44mm / 744mm tall
Material: Timber top and steel support
 - Q50 240 Litter bins to public areas
Manufacturer: Artform Urban Furniture
Product reference: Box (100L)
Material: Steel
Colour and Finish: Galvanized and polyester powder coated RAL 7012
 - Q50 250 Fitness Equipment
Note: Total number and Equipment to be confirmed with Trust.
 - Q31 292 Prefabricated plant containers
Manufacturer: Euro Planters
Bespoke item, all planters to be 1m high
Material: GRP and timber
Colour: GRP planter to be RAL 7016 Anthracite grey
 - Q31 292 Timber Benches as part of planter
Manufacturer: Euro Planters
Bespoke item, all benches to be 450mm above FGL.
Material: Timber
 - Q31 298 Timber plant planters
Manufacturer: Taylor Made Planters or equivalent
Product: Wooden Vegetable Planters with raised legs
Size: 1000 x 1000 x 500mm;
1000 x 500 x 500mm;
1500 x 1000 x 500mm
Material/Finish: Natural finish
To BS EN 042
 - L37 150 Proposed handrail to external ramp L37 150
 - Sail canopy
Canopies to be on post. Details by others
 - Geogrow retaining structure. Details by Geogrow specialist
 - Tactile paving for pedestrian crossings into a road
 - Proposed external retaining wall details to engineers



Rev	Description	Drawn	Checked	Date
C4	Issued for planning	ACL	ACL	14/12/23
C3	Retaining walls to the east and south omitted and replaced with a Geogrow structure. Position of post and rail fence amended to suit location of Geogrow structure. Layout of maintenance path to the east revised to suit position of Geogrow. Double gate added to Acute garden. External furniture raised planters for acute gardens revised to facilitate drainage. Removal of existing gas house and timber. Tactile paving installed for crossings. Levels along easter boundary revised to suit geogrow structure. Artificial grass omitted. Levels, external furniture and softscape on courtyards revised to allow drainage into proposed gullies, surface for courtyard confirmed by BIP to be not permeable.	TJ	MG	28/10/22
C1	Issued for Stage 5	TJ	GS	07/10/22
P1	Issued for Costing	ACL	KPE	19/01/22

Suitability
Construction Approval
 Project
 Derbyshire Healthcare NHS Foundation Trust
 New Mental Health Accommodation - Chesterfield (Landscape)
 Chesterfield Hospital, Derbyshire North
 Drawing
 Courtyards Sheet 4

Project ID	Originator	Zone	Level	Type	Role	Number
RG0004	- RYD	- ZZ	- XX	- DR	- L	- 2105
Project Number	Scale at A1	Status	Revision			
10443-00	1 : 100	S4	C4	.0		