

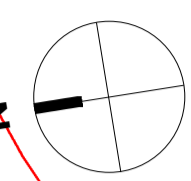
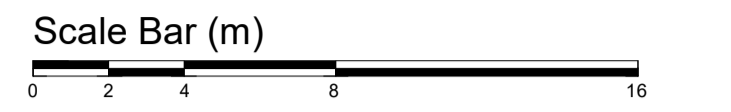
The use of this data by the recipient acts as an agreement of the following statements:
Do not use this data if you do not agree with any of the following statements:

Ryder Architecture has co-ordinated relevant information received from third parties, but are not responsible for the content of the information received from others.

The controlled version of this drawing should be viewed in DWG or PDF format not DWG or other formats. All prints of this drawing must be made in full colour.

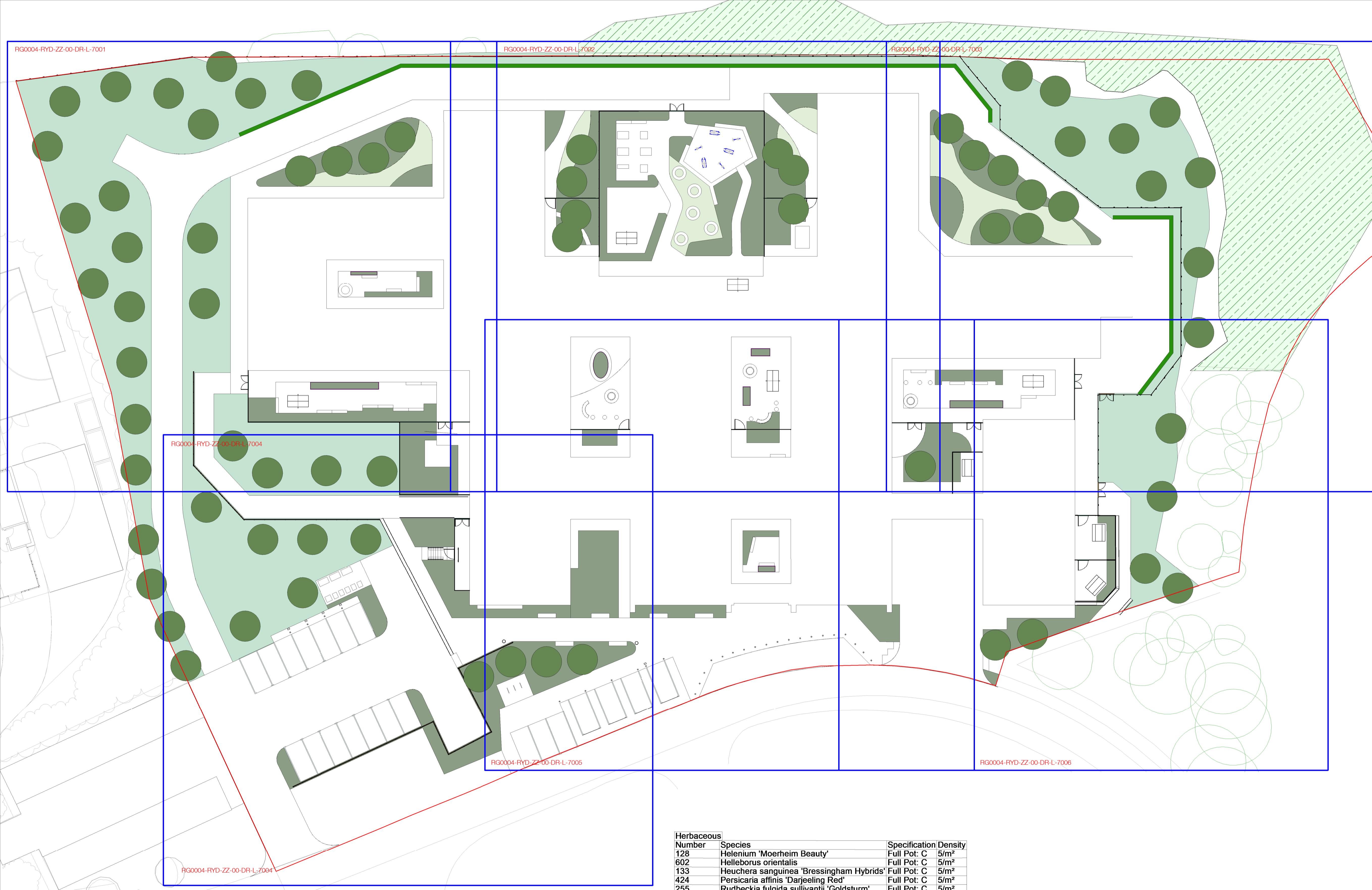
Where this drawing has been based upon Ordnance Survey data, it has been reproduced under the terms of Ryder Licence No. 10000144. Reproduction of this drawing in whole or in part is prohibited without the prior permission of Ordnance Survey.

Do not scale the drawing. Use figured dimensions in all cases. Check all dimensions on site. Report any discrepancies in writing to Ryder before proceeding.



LEGEND

- PROPOSED
- Site Boundary
- Q30 310 Proposed Grass Seed to Visual Amenity Gardens
Mixture: Germinall Amenity A24 Wear and Tear
- Q30 312 Wildflower Seed Mixture
Supplier: Encorgate Seeds
Mixture: EWSF
- Ornamental planting
REFER TO PLANTING PLANS
- Proposed trees



Herbaceous

| Number | Species | Specification | Density |
|--------------------|---|---------------|------------------|
| 128 | Helenium 'Moerheim Beauty' | Full Pot: C | 5/m ² |
| 602 | Helleborus orientalis | Full Pot: C | 5/m ² |
| 133 | Heuchera sanguinea 'Bressingham Hybrids' | Full Pot: C | 5/m ² |
| 424 | Persicaria affinis 'Darjeeling Red' | Full Pot: C | 5/m ² |
| 255 | Rudbeckia fulgida sullivantii 'Goldsturm' | Full Pot: C | 5/m ² |
| 295 | Sedum 'Herbstfreude' | Full Pot: C | 5/m ² |
| Total :1837 | | | |

Ferns

| Number | Species | Specification | Density |
|-------------------|-------------------------|---------------|------------------|
| 294 | Asplenium scolopendrium | Full Pot: C | 5/m ² |
| 265 | Blechnum spicant | Full Pot: C | 5/m ² |
| 142 | Polystichum setiferum | Full Pot: C | 5/m ² |
| Total :701 | | | |

Grasses

| Number | Species | Specification | Density | Area | Notes |
|--------------------|-----------------------------------|---------------|------------------|-------------------|---|
| 387 | Carex oshimensis 'Evergold' | Full Pot: C | 5/m ² | 75m ² | To be underplanted with Allium 'Purple Sensation' Grade 12/+ @ 7per m ² - Total 469no. Bulbs |
| 50 | Carex oshimensis 'Evergold' | Full Pot: C | 5/m ² | 10m ² | |
| 153 | Choiysa ternata 'Sundance' | Full Pot: C | 3/m ² | 46m ² | |
| 167 | Festuca glauca | Full Pot: C | 5/m ² | 33m ² | To be underplanted with Allium nigrum Grade 12/+ @ 7per m ² - Total 329no. Bulbs |
| 522 | Panicum virgatum 'Northwind' | Full Pot: C | 5/m ² | 103m ² | |
| 10 | Panicum virgatum 'Northwind' | Full Pot: C | 5/m ² | 2m ² | To be underplanted with Allium 'Purple Sensation' Grade 12/+ @ 7per m ² - Total 469no. Bulbs |
| 27 | Panicum virgatum 'Northwind' | Full Pot: C | 5/m ² | 5m ² | To be underplanted with Allium nigrum Grade 12/+ @ 7per m ² - Total 329no. Bulbs |
| 288 | Pennisetum alopecuroides 'Hameln' | Full Pot: C | 5/m ² | 57m ² | |
| 40 | Pennisetum alopecuroides 'Hameln' | Full Pot: C | 5/m ² | 8m ² | To be underplanted with Allium nigrum Grade 12/+ @ 7per m ² - Total 329no. Bulbs |
| Total :1644 | | | | | |

Chesterfield - Overall Proposed Planting Schedule

Trees

| Number | Species | Height | Girth | Specification | Density |
|------------------|----------------------------|-----------|---------|--|---------|
| 14 | Acer campestre | 450-500cm | 18-20cm | Extra Heavy Standard: 3x: RB: Clear Stem min. 200cm | Counted |
| 6 | Amelanchier lamarckii | 350-425cm | 16-18cm | Extra Heavy Standard: 5 brks: 3x: RB: Clear Stem 175-200cm | Counted |
| 21 | Betula pendula | 450-500cm | 18-20cm | Extra Heavy Standard: 3x: RB: Clear Stem min. 200cm | Counted |
| 2 | Betula utilis jacquemontii | 300-350cm | | Multi-Stemmed: Bushy: 3 Stems min.: C | Counted |
| 6 | Prunus 'Accolade' | 450-500cm | 18-20cm | Extra Heavy Standard: 3x: RB: Clear Stem min. 200cm | Counted |
| 13 | Prunus padus | 450-500cm | 18-20cm | Extra Heavy Standard: 3x: RB: Clear Stem min. 200cm | Counted |
| 8 | Quercus robur | 450-500cm | 18-20cm | Extra Heavy Standard: 3x: RB: Clear Stem min. 200cm | Counted |
| Total :70 | | | | | |

Shrubs

| Number | Species | Height | Specification | Density |
|--------------------|--------------------------------|---------|---------------------------|------------------|
| 181 | Buxus sempervirens | 20-30cm | Bushy: 6 brks: C | 5/m ² |
| 440 | Hebe 'Red Edge' | | Bushy: 5 brks: C | 5/m ² |
| 269 | Lavandula stoechas pedunculata | 20-30cm | Bushy: 5 brks: C | 3/m ² |
| 402 | Pachysandra terminalis | | Several Shoots: 9 brks: C | 5/m ² |
| 181 | Rosmarinus officinalis | 30-40cm | Bushy: 4 brks: C | 3/m ² |
| Total :1473 | | | | |

| Rev | Description | Drawn | Checked | Date |
|-----|---------------------|-------|---------|----------|
| C1 | Issued for planning | ADL | ADL | 14/12/23 |

Project: Derbyshire Healthcare NHS Foundation Trust
New Mental Health Accommodation - Chesterfield (Landscape)
Chesterfield Hospital, Derbyshire North

Project: 10443-00

| Project ID | Originator | Zone | Level | Type | Role | Number |
|------------|------------|------|-------|------|------|--------|
| RG0004 | - RYD | - ZZ | - XX | - DR | - L | - 7000 |

Project Number: 10443-00 | Scale at: A1 | Status: S4 | Revision: C1