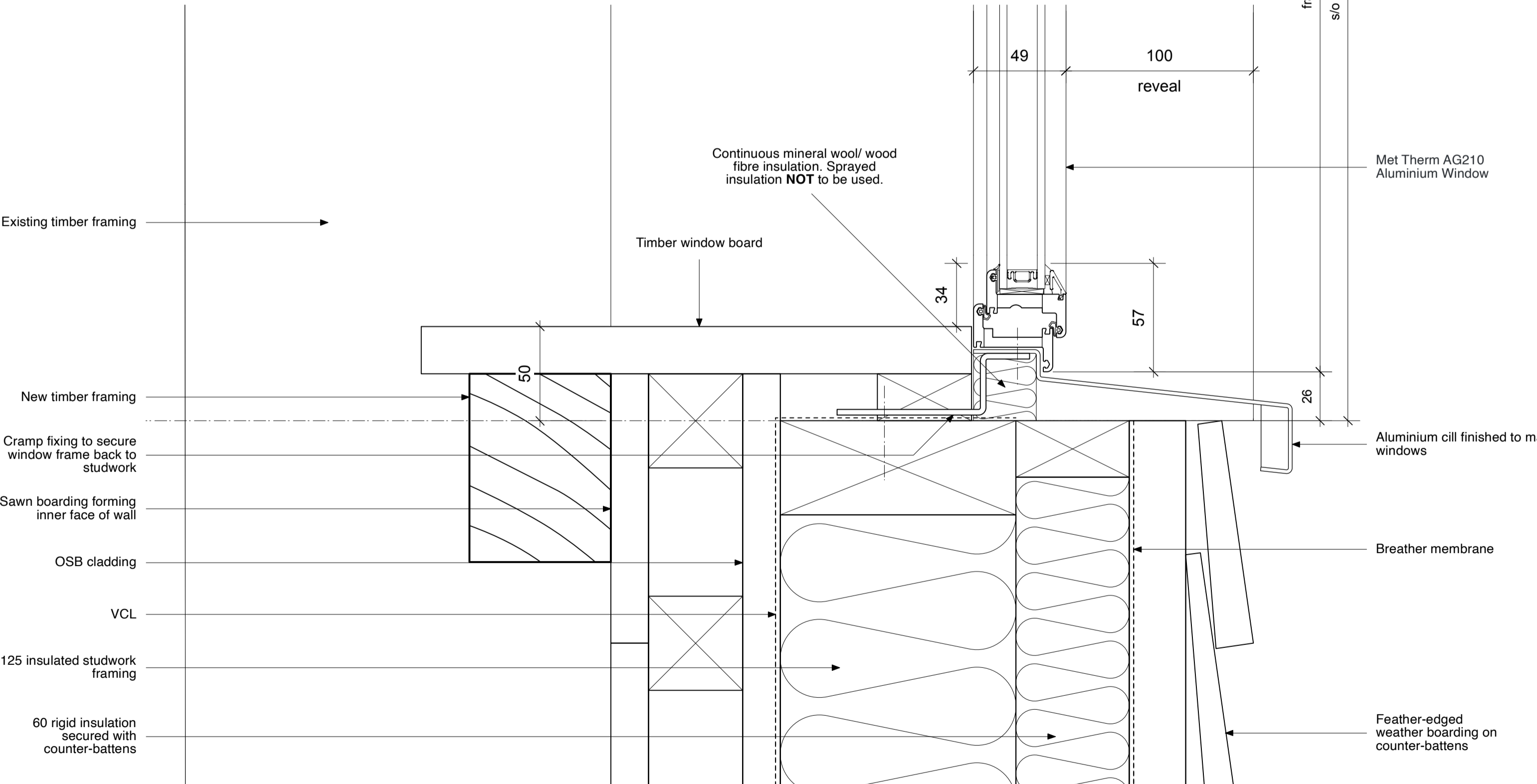
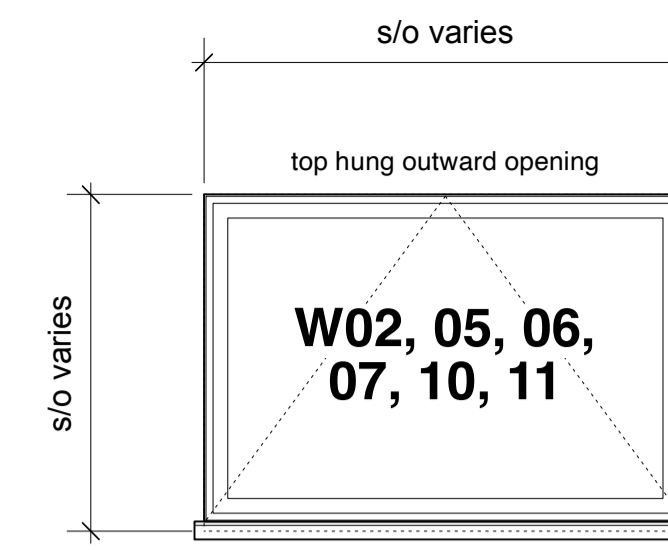


WINDOW HEAD
1:2 AT A1



WINDOW CILL
1:2 AT A1

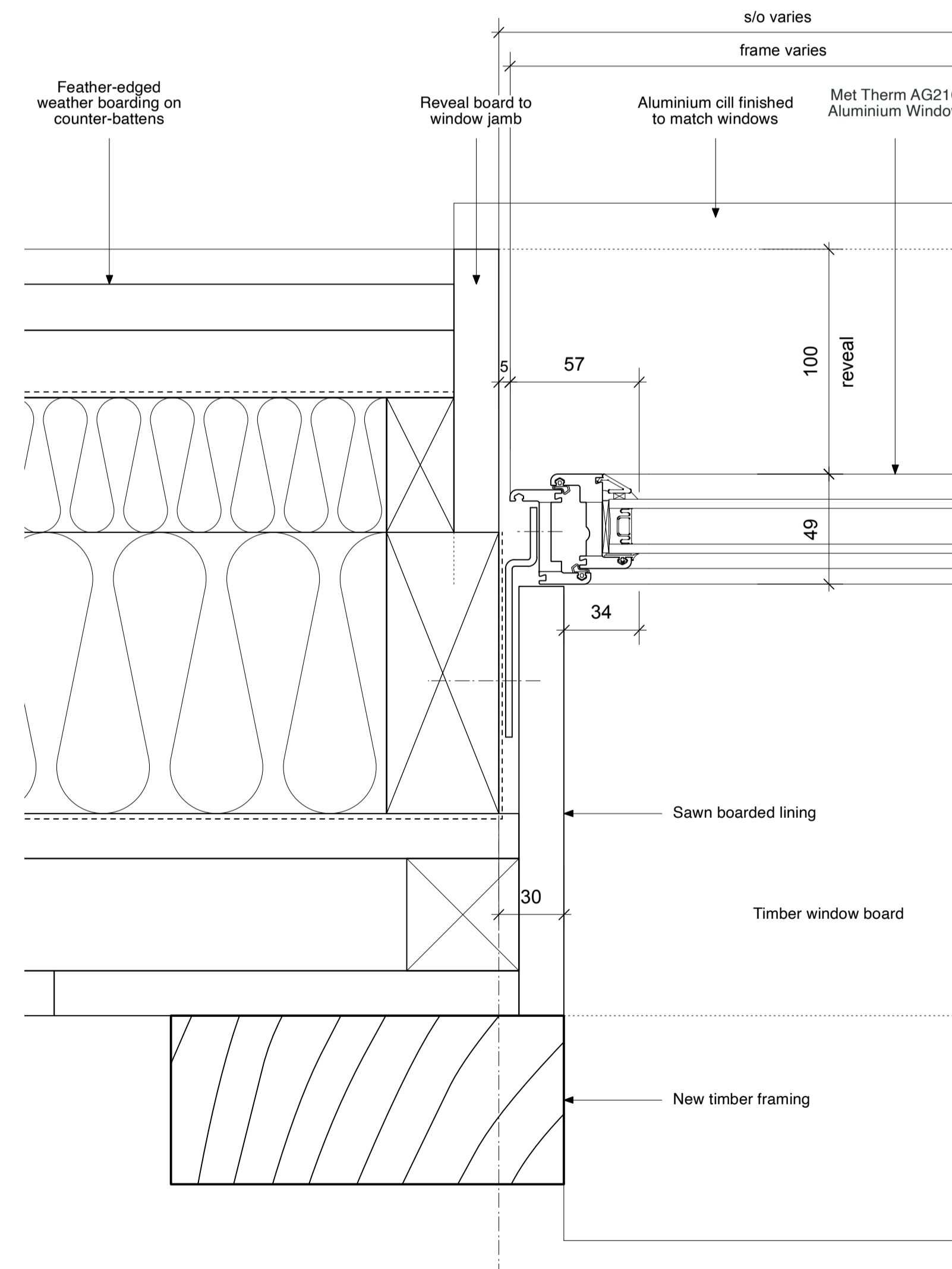


NOTE:
WINDOWS **W04, W09 & W12** TO BE SIDE-HUNG OUTWARD OPENING. REFER TO DRAWING 1022-41 FOR ALL WINDOW TYPES.

WINDOW ELEVATION
1:20 AT A1

WINDOW SPECIFICATION:

SYSTEM: MET THERM AG210 ALUMINIUM WINDOW
DEPTH OF REVEAL: 100 MM
METHOD OF OPENING: TOP HUNG CASEMENT OPENING OUT
FINISH: POLYESTER POWDER COATED TO SW204G MANGANESE - METALLIC MATT



WINDOW JAMB
1:2 AT A1

DO NOT SCALE FROM THIS DRAWING.

All critical dimensions not noted are to be measured on site or referred to architect.

Notes

Revisions

| | | |
|----|----------|---------------------------------------|
| P1 | 10.01.22 | Preliminary issue. |
| P2 | 23.02.22 | S/O information added. |
| T1 | 05.04.22 | Tender Issue |
| C1 | 05.12.22 | Glazing updated to Met Therm details. |
| C2 | 18.12.23 | Reference to W12 added. |

Drawing Number 1022-35-C2

Content
TYPICAL WINDOW DETAILS

Scale 1:20 & 1:2 at A1 Date DEC 2021

THE OLD RECTORY,
ALBURY - BARN

OLIVER WEST & JOHN SCOTT ARCHITECTS
The Studio, 3A Bath Road,
Bedford Park W4 1LL
Tel 020 8995 4275
E-mail: studio@westscottarchitects.co.uk
Fax 020 8742 7186

Key

Drawing Number 1022-35-C2

