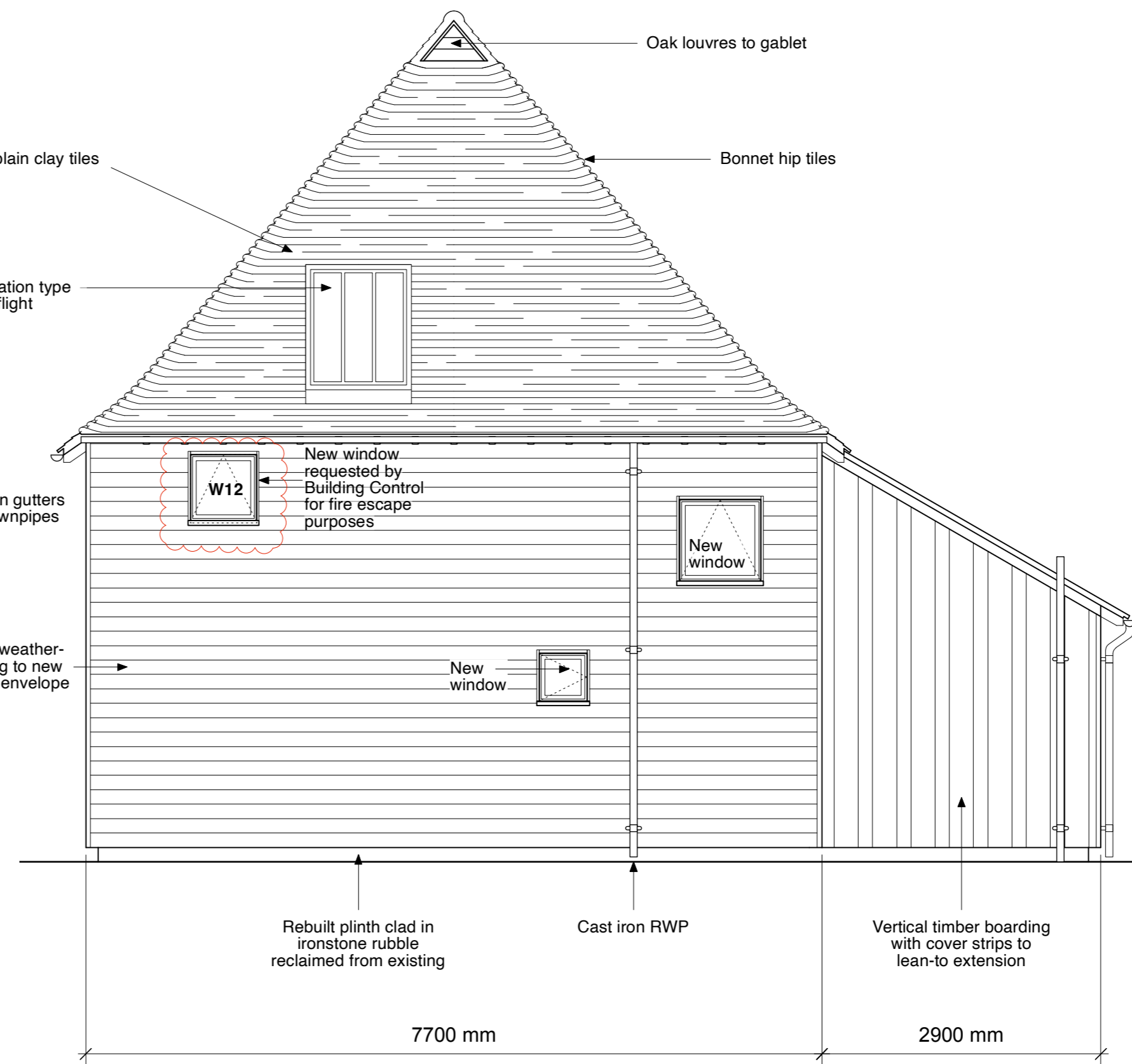
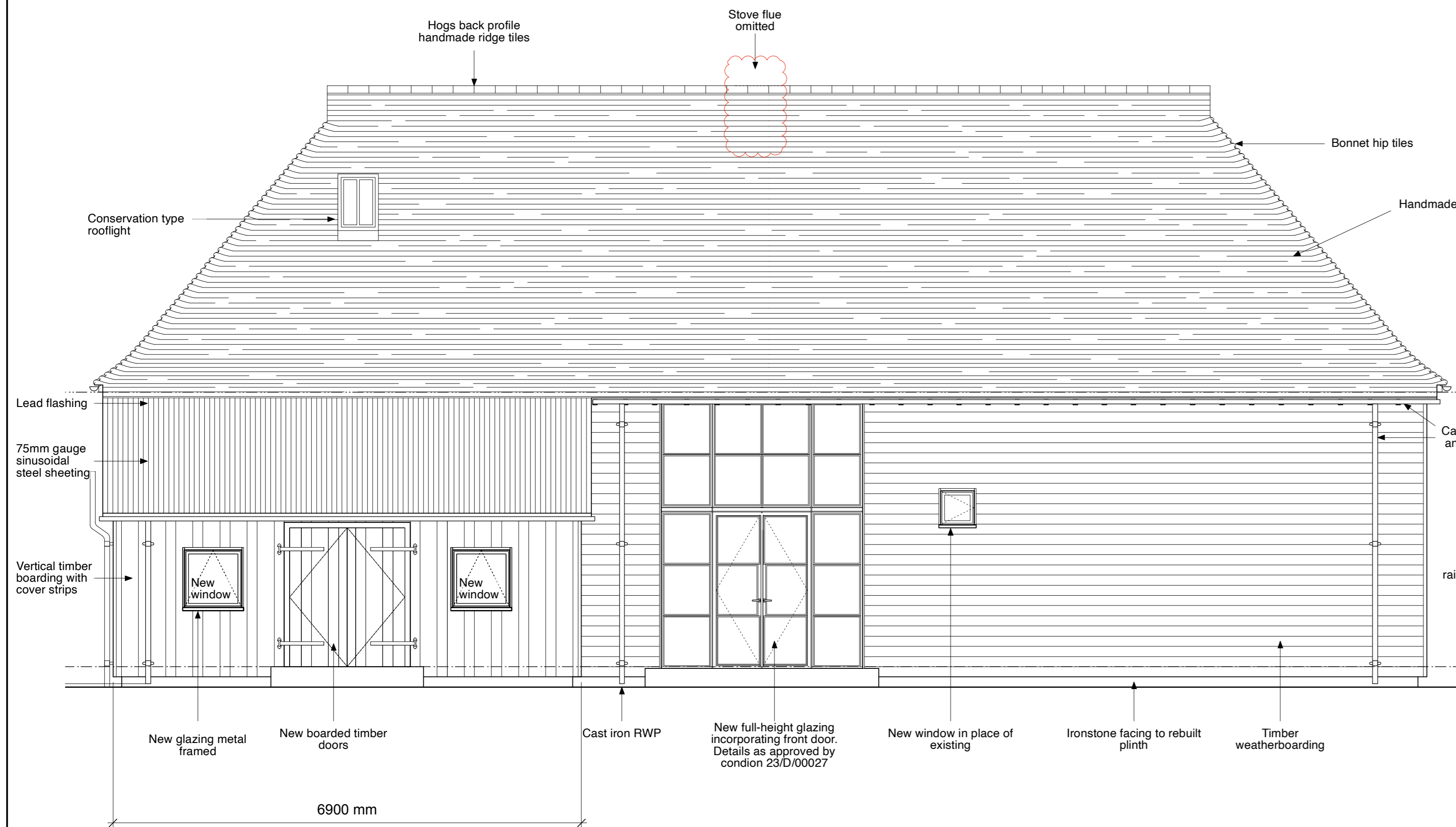


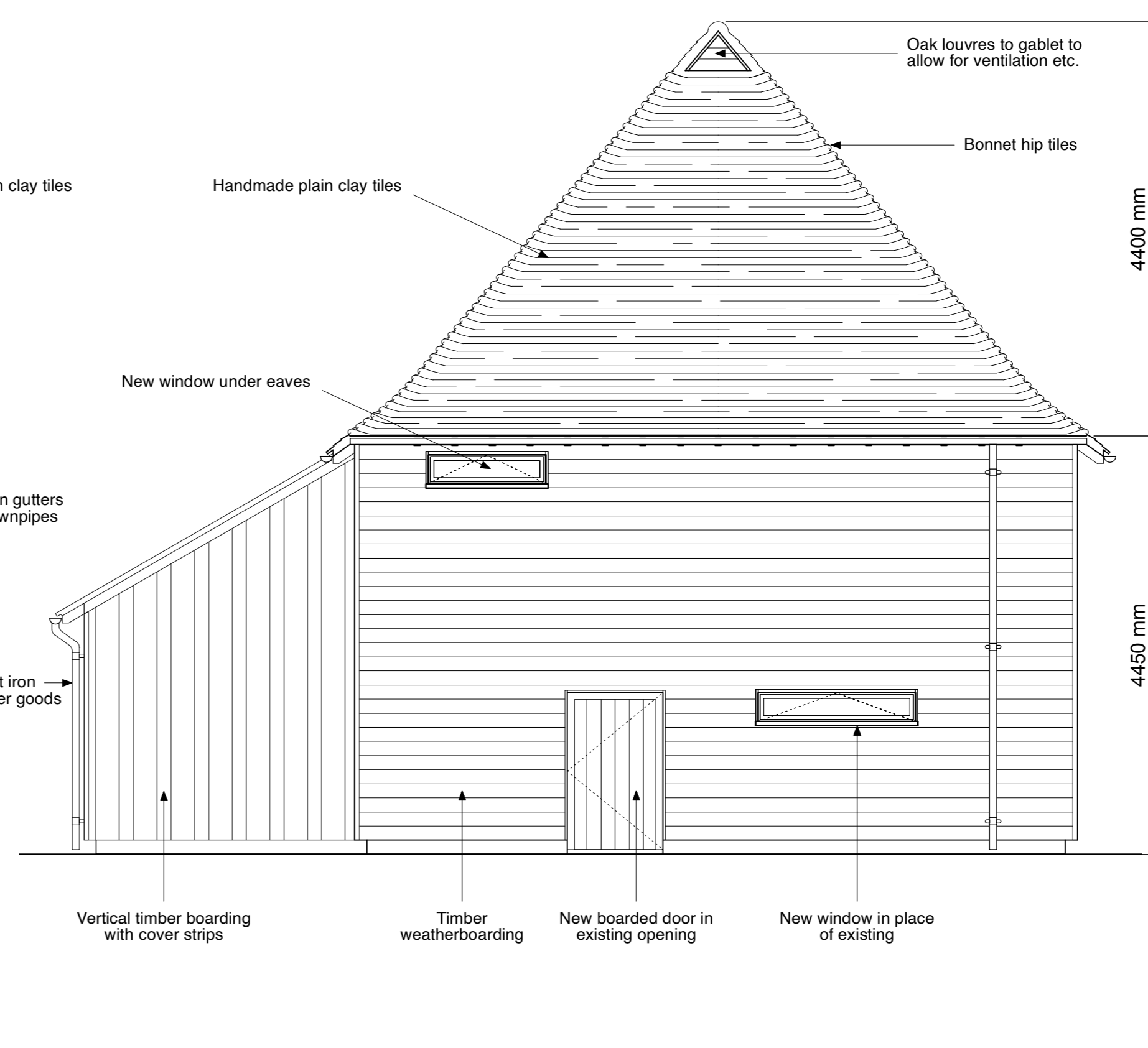
NORTH EAST



NORTH WEST



SOUTH WEST



SOUTH EAST



DO NOT SCALE FROM THIS DRAWING.

All critical dimensions not noted are to be measured on site or referred to architect.

Notes

Revisions

Revision	Date	Description
A	09.10.20	Dimensions added.
B	15.11.21	Redrawn in CAD.
C	13.11.23	Doors amended to suit internal layout. Glazing updated to details as approved by discharge of conditions ref. 23/D/00027. Window W12 added - required for fire escape by Building Control. Proposed flue omitted.

Drawing Number 1022-23-C

Content
**ELEVATIONS
AS PROPOSED**

Scale 1:50 at A1 Date JAN 2020

**THE OLD RECTORY,
ALBURY - BARN**

OLIVER WEST & JOHN SCOTT ARCHITECTS
The Studio, 3A Bath Road,
Bedford Park W4 1LL
E-mail: studio@westscottarchitects.co.uk

Tel 020 8995 4275
Fax 020 8742 7186

Key

Alterations to previously approved proposals indicated by red revision clouds.

Previous applications:
20/P/01694 (PP) & 20/P/01695 (LBC)
as amended by 21/N/0115 (NMA) & 21/P/02407 (LBC)
and further details approved by condition 23/D/00027.

Drawing Number 1022-23-C