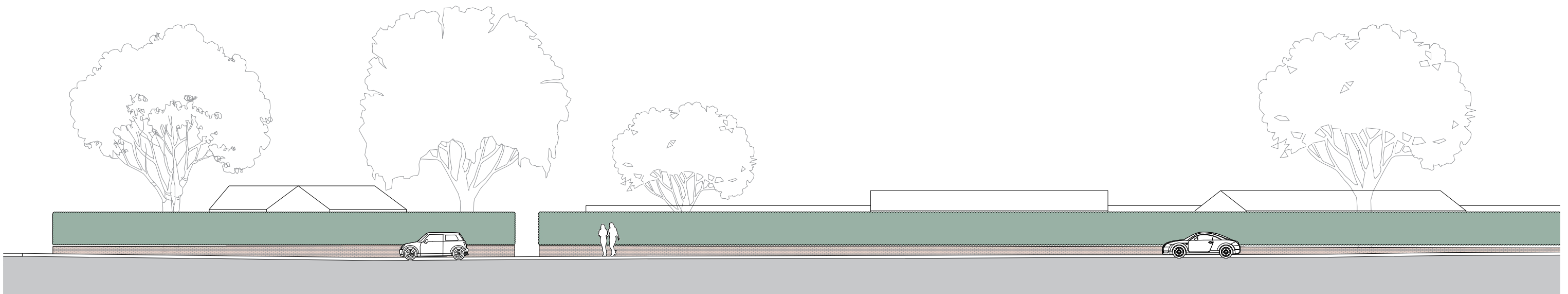


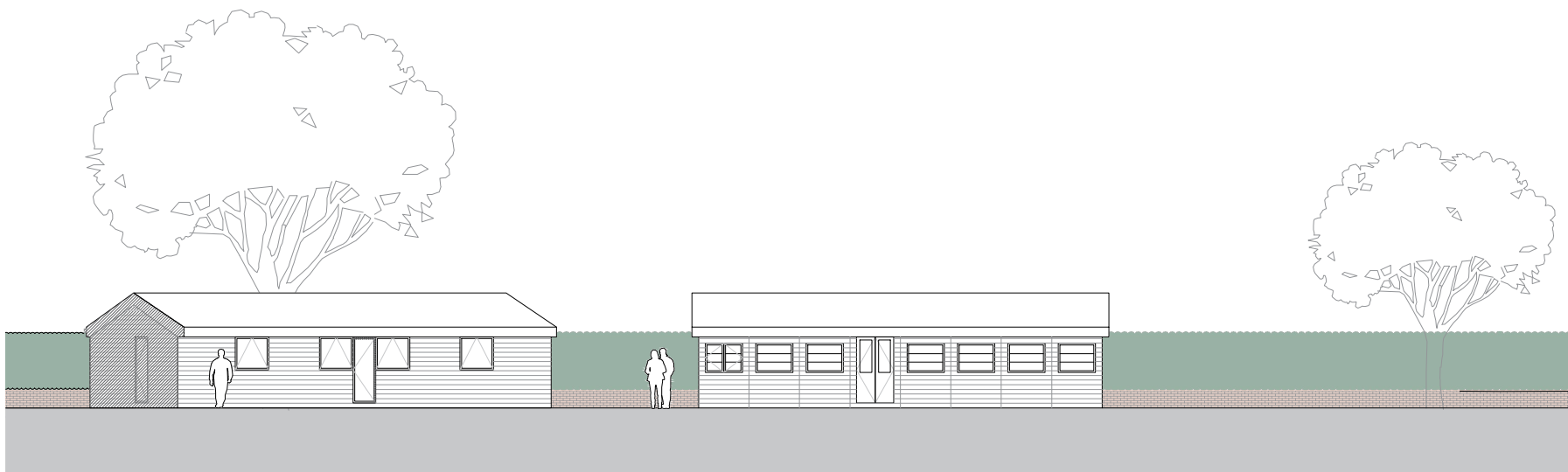
Section - Through Site and Liverpool Road

1:200



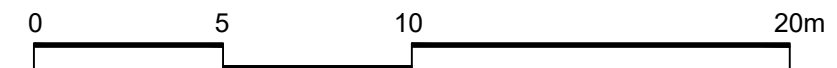
Section - Along Liverpool Road

1:200



Elevation - From Tennis Courts

1:200



THIS DRAWING IS THE COPYRIGHT OF RXA AND SHOULD NOT BE COPIED OR REPRODUCED WITHOUT WRITTEN CONSENT. ALL DIMENSIONS MUST BE CHECKED ON SITE. DO NOT SCALE OFF THIS DRAWING EXCEPT FOR PLANNING PURPOSES. THIS DRAWING MUST BE READ IN CONJUNCTION WITH THE SPECIFICATION OF WORKS. ALL WORKS MUST BE CARRIED OUT IN ACCORDANCE WITH THE STATUTORY AUTHORITIES.

STATUS: Planning
 SCALE: 1:200 @ A3
 DATE: 11.07.2022

DRAWING NO: 00922-PL-450_Rev B
 TITLE: Existing Section & Elevation
 PROJECT: Walmer Tennis Club



RX Architects Limited

Rye Creative Centre, New Road, Rye,
 East Sussex TN31 7LS
 t 01797 217220 www.rxarchitects.com
 e studio@rxarchitects.com