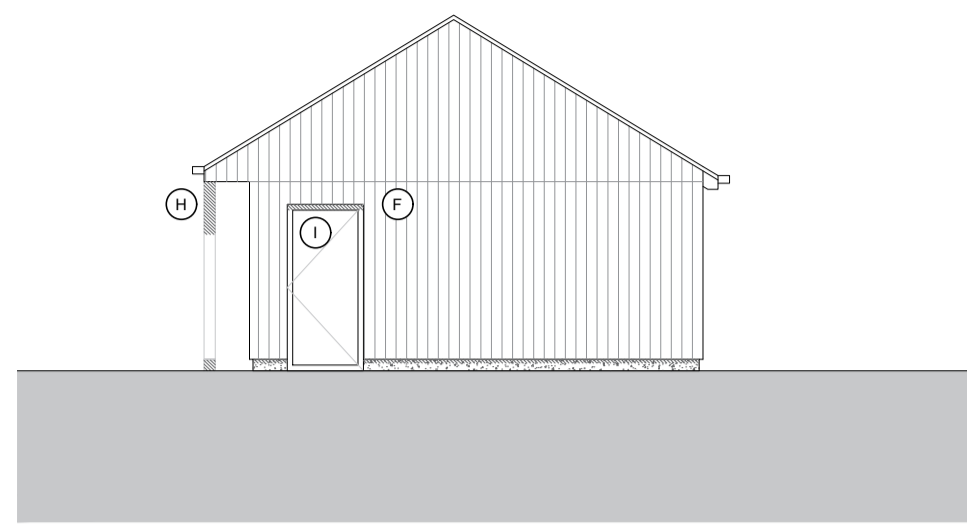
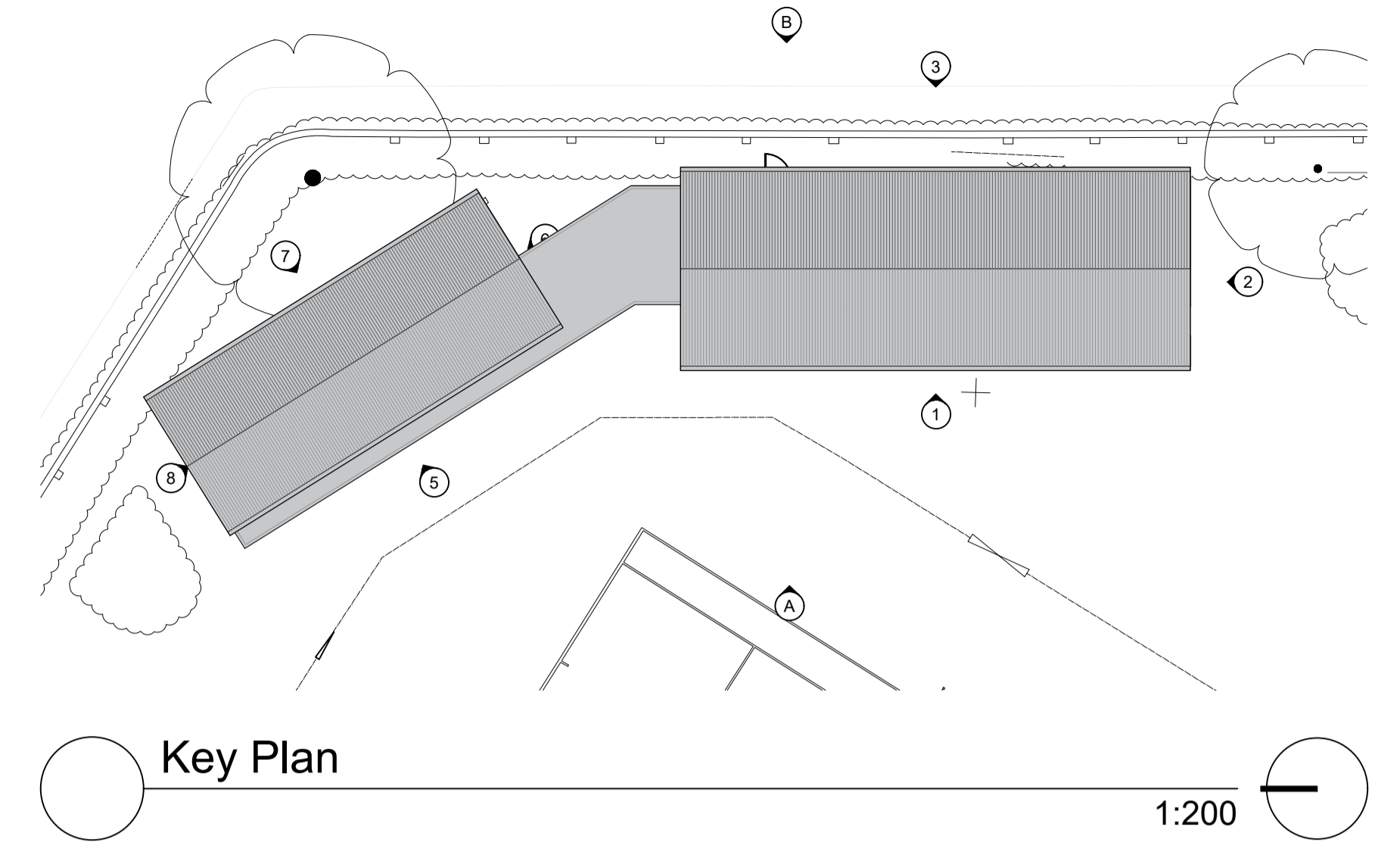


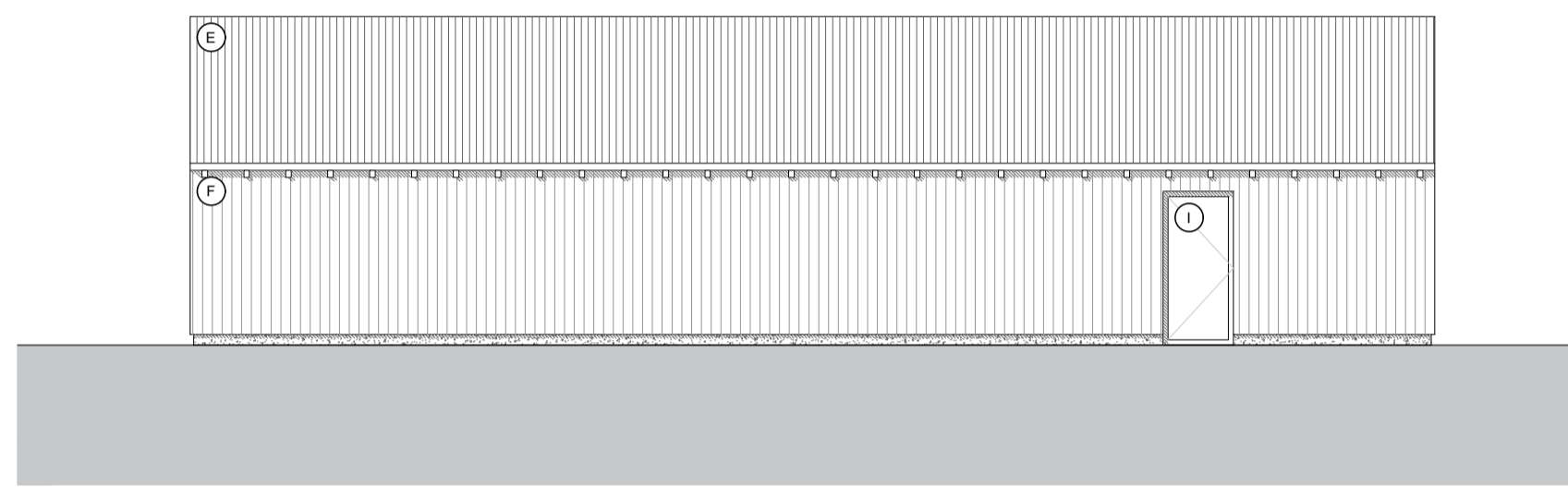
1 West Elevation - Club House 1:100



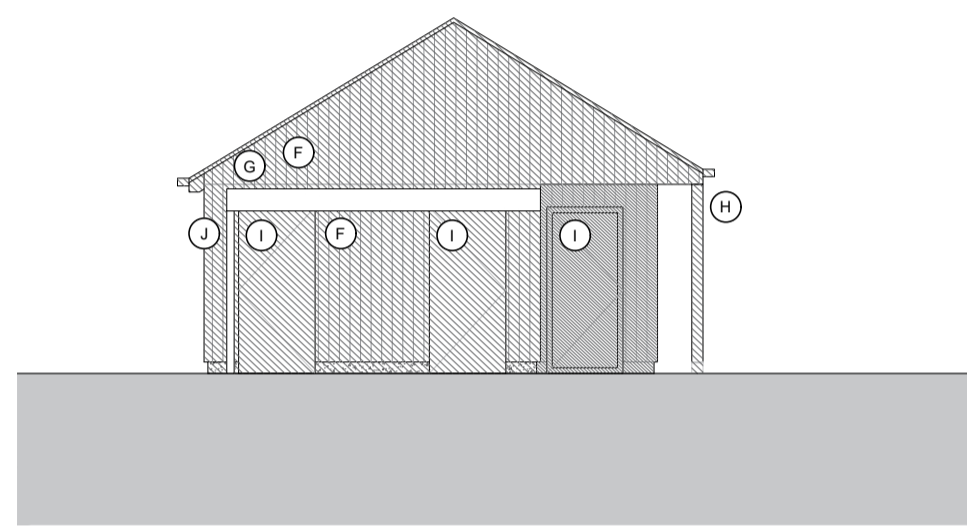
2 North Elevation - Club House 1:100



Key Plan 1:200

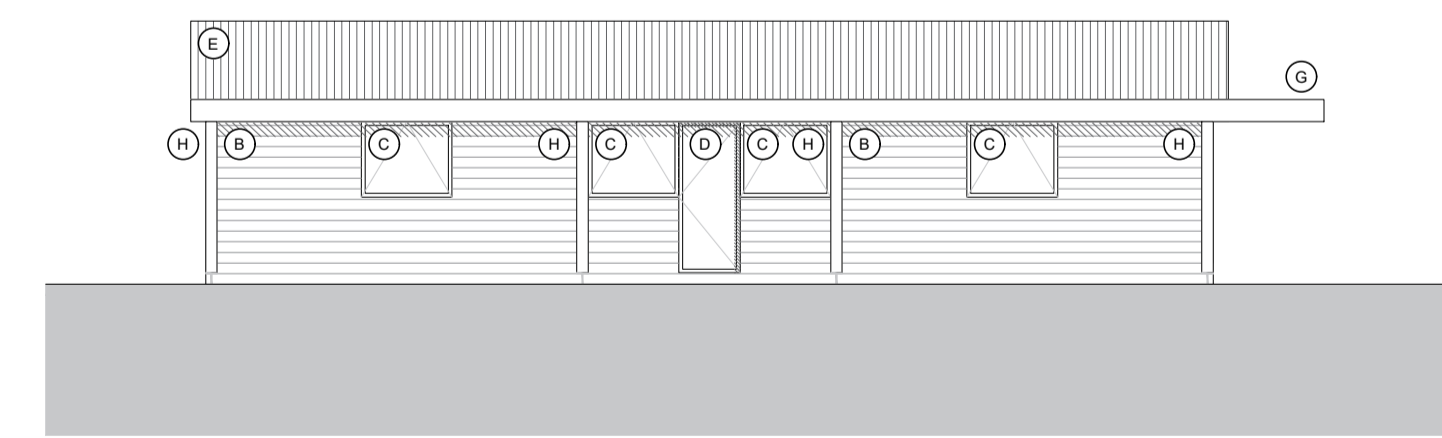


3 East Elevation - Club House 1:100

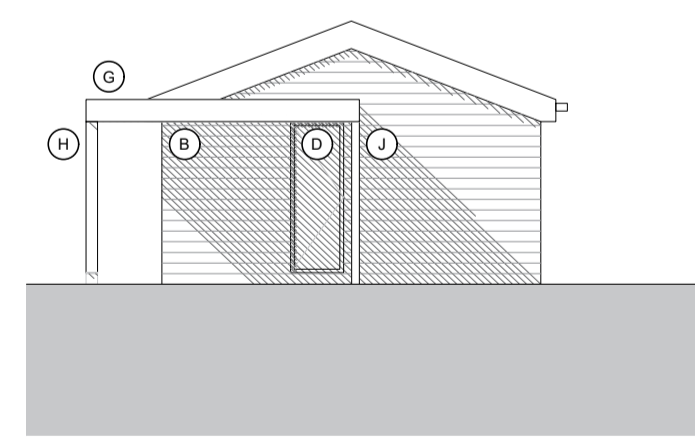


4 South Elevation - Club House 1:100

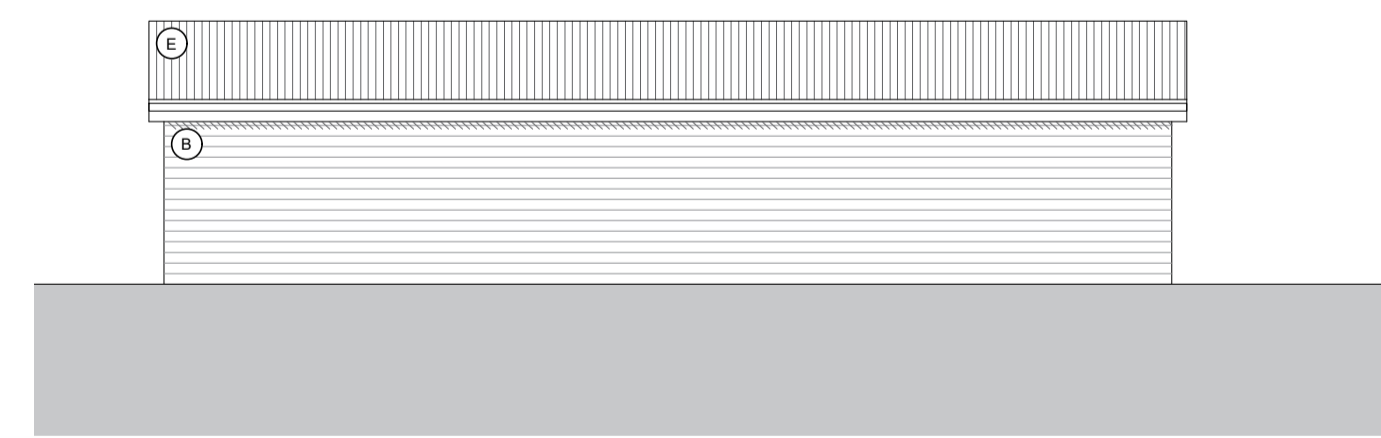
Materials Key	
A	Existing Felt Roof
B	Existing Horizontal Timber Cladding (Black)
C	Existing Window Shutters (Black)
D	Existing Timber Door (Black)
E	New Corrugated Metal Roof Finish (Black)
F	New Vertical Timber Cladding (Black)
G	New Canopy with Metal Fascia (Black)
H	New Timber Posts (Black)
I	New Aluminium Door/Window (Black)
J	New Timber Fins (Black)



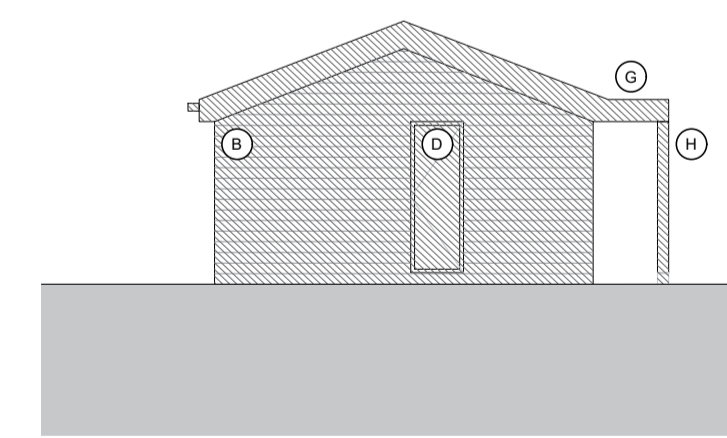
5 West Elevation - Changing Rooms 1:100



6 North Elevation - Changing Rooms 1:100



7 East Elevation - Changing Rooms 1:100



8 South Elevation - Changing Rooms 1:100

THIS DRAWING IS THE COPYRIGHT OF RXA AND SHOULD NOT BE COPIED OR REPRODUCED WITHOUT WRITTEN CONSENT. ALL DIMENSIONS MUST BE CHECKED ON SITE. DO NOT SCALE OFF THIS DRAWING EXCEPT FOR PLANNING PURPOSES. THIS DRAWING MUST BE READ IN CONJUNCTION WITH THE SPECIFICATION OF WORKS. ALL WORKS MUST BE CARRIED OUT IN ACCORDANCE WITH THE STATUTORY AUTHORITIES.

Notes:



STATUS: Planning
SCALE: 1:100 @ A1
DATE: 21.02.23

DRAWING NO:
TITLE:
PROJECT:

00922-PL-456 Rev C
Proposed Elevations - 1 - 8
Walmer Tennis Club



RX Architects Limited
Rye Creative Centre, New Road, Rye,
East Sussex TN31 7LS
t 01797 217220 www.rxarchitects.com
e studio@rxarchitects.com