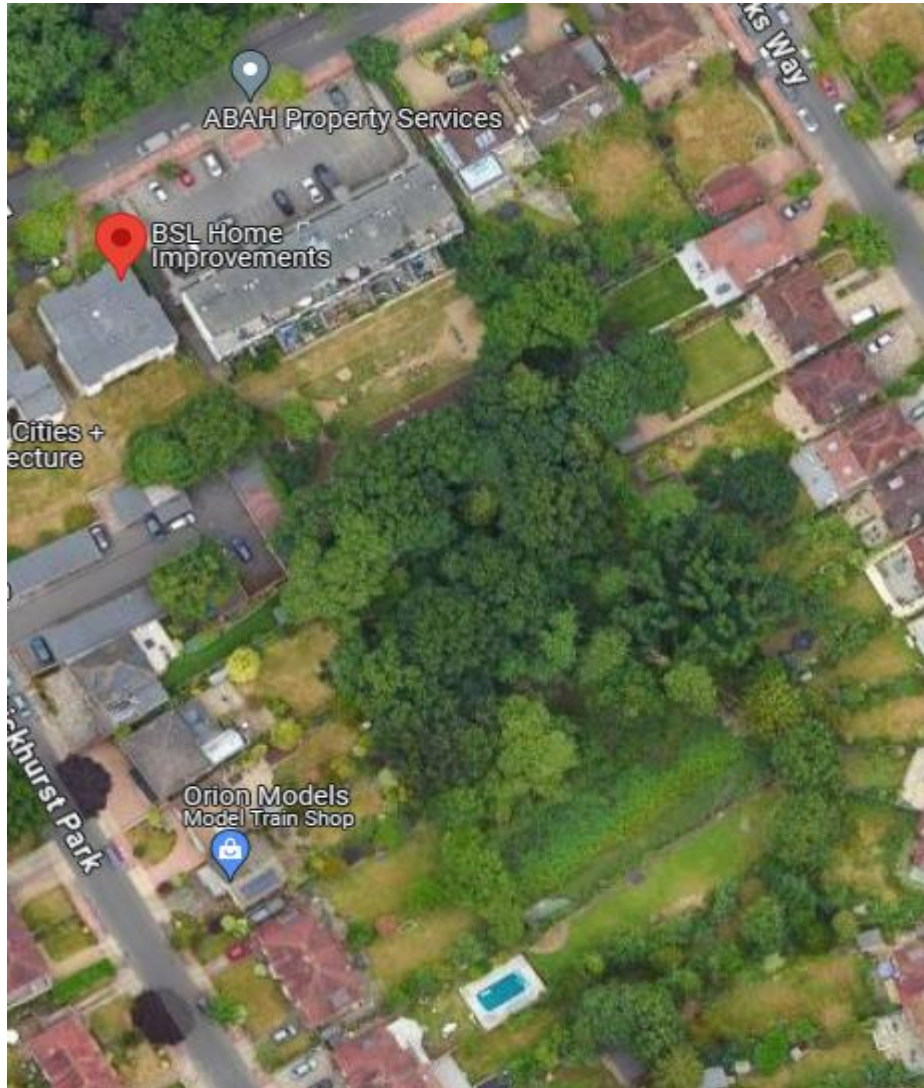


Sketch Plan  
Flat 1-36 Southill Court, 107 Westmoreland Road, Bromley, BR2 0UY



Sketch Plan  
Flat 1-36 Southhill Court, 107 Westmoreland Road, Bromley, BR2 0UY



Sketch Plan  
Flat 1-36 Southhill Court, 107 Westmoreland Road, Bromley, BR2 0UY





**Sketch Plan**  
**Flat 1-36 Southill Court, 107 Westmoreland Road, Bromley, BR2 0UY**

**Summary of work**

**T7 English Oak** – Crown Reduction - Up to 2 metres reduction of south-west primary lateral branch. Current height approximately 14 metres. Bifurcates at 2 metres, included bark union with minor adaptive growth. South-west primary lateral over neighbouring garden at 5-6 metres and end-weighted. Reason for work: To reduce back from neighboring garden.

**T12 English Oak** – Crown Reduction - Up to 2 metres reduction of east primary branch. Current height approximately 14 metres. East primary branch end-weighted over playground slide. Reason for work: Weight reduction in high target area.

**T13 Ash** – To remove 2 x defective branches. Current height approximately 14 metres. One broken branch to the north sitting in the adjacent Oak. One west lower branch broken from recent nearby tree works. Reason for work: Suspected squirrel damage that has already led to a branch failure.

**T15 Sessile Oak** - Crown Reduction – Up to 2 metres reduction of the north canopy. Current height approximately 19 metres. Reason for work: maintenance pruning over high target area (playground).

**T19 Sessile Oak** – Crown Reduction - Up to 3 metres reduction back to previous reduction points. Current height approximately 18 metres. Tight union at 0.5 metre and minor to moderate adaptive growth. Some decay visible to east - shallow. East stem is leaning east and has been partially reduced over the play equipment. Reason for work: Overall reduction to balance the canopy as previously only cut back over the playground.

**T20 Ash** – Crown Reduction - To reduce the overall canopy by up to 2 metres to include removing the lowest north lateral. Current height approximately 6 metres. Dog leg stem and bent to the north then up righted higher and bending slightly to north-east. Reason for work: Overall reduction to balance the canopy.

**T27 Ash** - To carefully section fell as close to ground level as possible and neatly stack in a habitat pile. Current height approximately 17 metres. Reason for work: Dead standing tree.

**Sketch Plan**  
**Flat 1-36 Southill Court, 107 Westmoreland Road, Bromley, BR2 0UY**

**T30 Goat Willow** - To carefully section fell to approximately 2 metres monolith. Current height approximately 9 metres. Reason for work: Dead standing tree.

**T40 Himalayan Birch** - Crown lift - To lift the lower canopy to approximately 3 metres above ground level. Current height approximately 5 metres. Reason for work: Over the footpath by the playground, lifting the canopy for balanced form.

**T43 Himalayan Birch** - To remove snapped branches. Current height approximately 3 metres. Reason for work: Lower branches have been vandalized and snapped.

**T44 Portuguese Laurel** - To carefully section fell as close to ground level as possible. Current height approximately 5 metres. Reason for work: Dead standing tree by the footpath.

**T50 Sweet Chestnut** - To carefully section fell as close to ground level as possible and to poison stump with appropriate use of herbicide (eco plugs) to prevent regrowth. Current height approximately 6 metres. Reason for work: Poorly self-set in a small raised bed.

**T51 Ash** - To carefully section fell as close to ground level as possible and to poison stump with appropriate use of herbicide (eco plugs) to prevent regrowth. Current height approximately 6 metres. Reason for work: Poorly self-set - growing through the garden fence and located against pavers.