

RAVENS COURT PARK

FORMER ROYAL MASONIC HOSPITAL



CUDD BENTLEY CONSULTING

EXTERNAL LIGHTING
STRATEGY REPORT

6391-CBC-GK-RP-E-001-P02 November 2023

RAVENS COURT PARK HOSPITAL, HAMMERSMITH

TT Group

External Lighting Strategy

Cudd Bentley Consulting Ltd.

Ascot Office:

Ashurst Manor, Church Lane,
Sunninghill,
Berkshire,
SL5 7DD
Tel: (01344) 628821

London Office:

12 Devonshire Street,
London,
W1G 7AB
Tel: (0203) 393 6446

Solihull Office:

Regus, Central Boulevard,
Blythe Valley Business Park,
Solihull, West Midlands,
B90 8AG
Tel: (0121) 711 4343

www.cuddbentley.co.uk

Document Ref: 6391-CBC-GK-RP-E-001

Creation date: October 2023

Revision: P02

Revision Date: 31/10/23



Cudd
Bentley
Consulting

CONTENTS

CONTENTS	1
RECORD OF REVISIONS.	2
1 INTRODUCTION.....	3
1.1 SITE DESCRIPTION.....	3
1.2 DESCRIPTION OF DEVELOPMENT.	3
2 EXTERNAL LIGHTING ASSESSMENT STRATEGY.....	4
2.1 EXTERNAL LIGHT FITTING TYPES.....	4
2.2 EXTERNAL LIGHTING CONTROL & STANDARDS.	4
2.3 EXTERNAL LIGHTING CONCEPT PLAN.....	5

RECORD OF REVISIONS.

Date.	Revision.	Description of change.
20/10/23	P01	Stage 2 issue for planning
31/10/23	P02	Stage 2 updated issue for planning – fitting type references added to bullet description for cross referencing

1 INTRODUCTION.

This document has been produced to support the overall Planning Application for the new development at Ravenscourt Park Hospital, Hammersmith.

The document describes the principals of the External Lighting Assessment Strategy adopted across the External Landscaping & Building areas of the scheme to meet the Relevant Standards and Local Authority Regulations.

1.1 SITE DESCRIPTION.

The site comprises a hospital site that has been vacant for the past 17 years, since 2006 when the hospital use on the site ceased. Prior to its vacancy, the site operated as an in-patient hospital and there have been no changes of use approved on the site. As such, the site is considered to fall within Use Class C2.

The property is Grade II* listed (1192740) and is constructed in the Art-Deco architectural style, constructed and completed between 1931- 1933. The listed hospital buildings comprise four interconnecting blocks: the T-shaped three-storey administrative block facing Ravenscourt Park (Block A); a south-facing, U-shaped, five-storey ward block to the west (Block B); a five-storey annex block with a projecting ground floor with bowed ends to the north of this (Block C); and, further north again, a three-storey surgical block (Block D).

Later additions include Block E to the north (1978), connected to the building by a raised walkway, and the Wakefield Wing to the west (1959) (beyond the site boundary), now unconnected to the building, but historically joined by a bridge; these are considered by Historic England to lack special interest and are not included in the listing.

1.2 DESCRIPTION OF DEVELOPMENT.

Part demolition, part extension and alteration of the existing buildings and structures, change of use of the existing buildings and the erection of a new building including provision of a basement, to provide residential units (Use Class C3) and associated ancillary communal floorspace, a Care Home (Use Class C2) and flexible non-residential floorspace (Classes E, F1 and F2), together with associated roof top installations and structures, private and communal amenity space, landscaping, access, refuse storage, parking and associated works.

The physical development proposed comprises limited sensitive additions to the heritage buildings, together with replacement of the later 'Block E' with a high-quality new building, which responds to its context whilst respecting the character and primary importance of the listed buildings. The scheme includes an integrated landscaping design, which will improve the setting of the buildings and contribute to urban greening. The proposals maximise sustainability through an all-electric energy strategy, including ground source heat pumps, which are the most sensitive approach to the listed building.

2 EXTERNAL LIGHTING ASSESSMENT STRATEGY.

This External Lighting Assessment Strategy for the Ravenscourt Park Hospital development is as described below, together with relevant standards & local authority guidelines.

2.1 EXTERNAL LIGHT FITTING TYPES.

Lighting will be provided to ensure safe use of the site whilst providing visual interest & a pleasing ambience for the residents, with reference to the period art deco original feature light fittings in historic areas:

Indicative locations for these “types” as section 2.3 legend, are included on Lighting concept plans views in 2.3:

Light levels will be generally 20 lux for roadways & 5-10 lux for pathways & as otherwise required to standards.

- (type XC1) LED Lighting columns: recreated art deco style globe lighting columns in historic view areas, as period images (picture insert). In other areas using similar style 3m light globe columns, complete with modern optics for efficiency & optimum glare control.
- (type XG2 & XG1 respectively) LED period entrance lights: recreated art deco style gatepost entrance wall lights & overdoor building entrance recreated art deco lights, as period images (pics).
- (type SC1) LED Building façade cylinder wall lights at first floor level, with focussed narrow beam lighting the lower level of the buildings façade.
- (type XB1) LED Bollard lights to highlight pathways for safe pedestrian movement & landscaping visual interest.
- (type XD1 under benches & XF1 where in ground) LED under bench concealed strip lights, to illuminate the area & local surrounding walkways surface for safety & visual interest.
- (type XA1) LED slim recessed brick lights on raised planters illuminate pathways at low level.
- (type XU2) LED uplighters beneath feature trees to illuminate at low level discretely, where internal to the site.
- (type UU2) LED uplighters as part of linear water features for visual interest, in the heart of the site.

2.2 EXTERNAL LIGHTING CONTROL & STANDARDS.

All external lighting will be LED low energy type, 3000oK warm white colour temperature, complete low glare optics to meet energy & planning requirements. All lighting will be controlled via on/off time-based controls for agreed hours of use, complete with photocell override to hold off where already sufficient daylight at different times of year.

All lighting to the roadway & pathways will be to British Standards; BSI, CIBSE & ILP, for safe movement & to minimise light pollution. Glare control will meet & improve upon standards & any upward light spill adjacent to surrounding residents boundaries will be strictly limited to be well within limits.

- BS5489-1 2020: Design of road lighting. Lighting of roads and public amenity areas. Code of practice.
- CIBSE/SLL Codes for Lighting & Exterior Lighting: Lighting Guid LG06/16: The Exterior Environment;
- ILP GN 01/20: Guidance Note for the Reduction of Obtrusive Light 2020.

- Historic England guides: External Lighting of Historic Buildings.










The external lighting design light levels for safety & glare control will be calculated, with resulting lighting contours lux levels & light spill figures to meet standards & meet & exceed glare control standards for residents & light levels with any light spill to ILP standards at the boundary of the site to surrounding residents.

2.3 EXTERNAL LIGHTING CONCEPT PLAN.

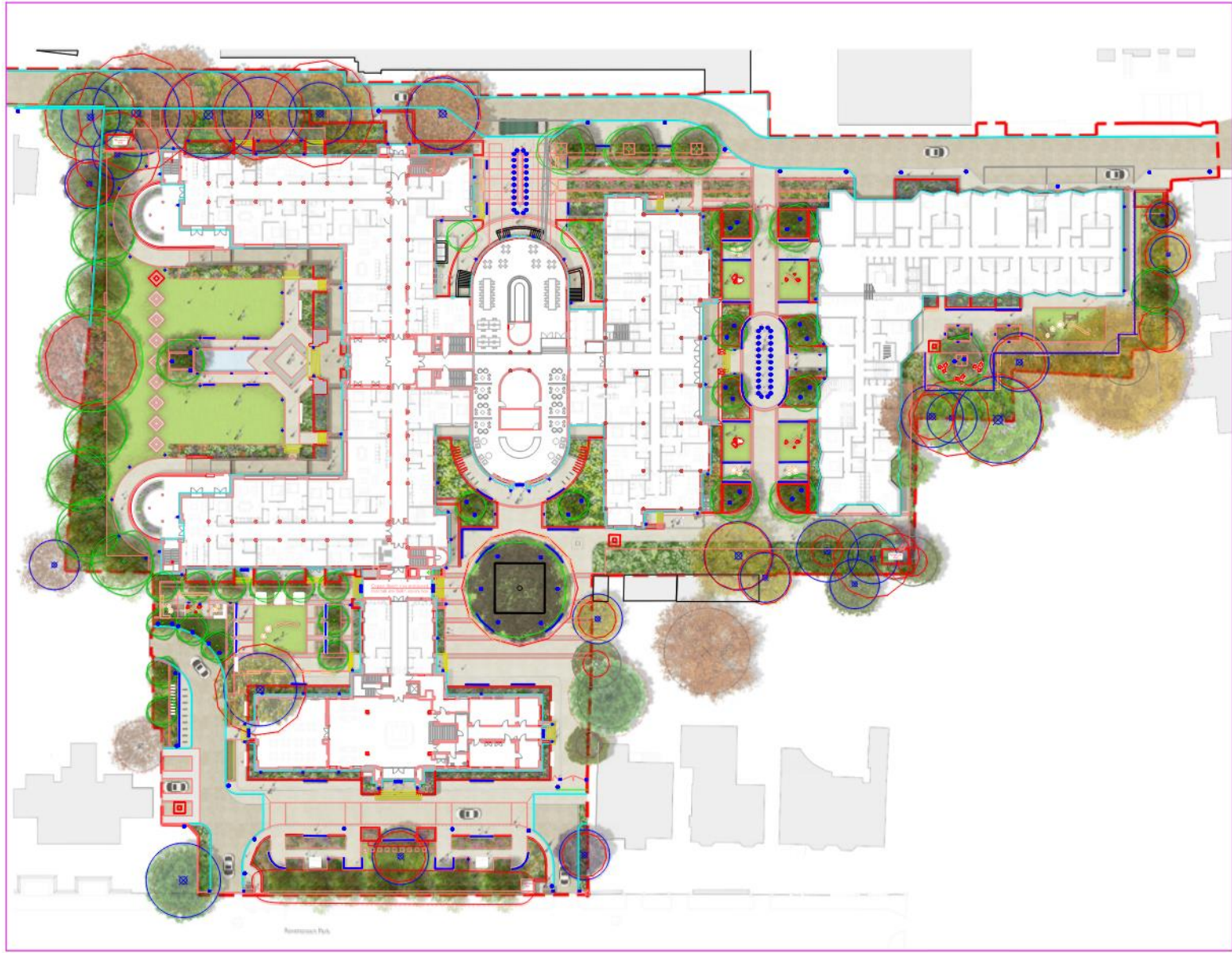
The External lighting concept scheme plan described is appended here, together with screenshots embedded referencing the period art deco style fittings being recreated in historic areas & also images of the light fitting types for the areas.

The external lighting design detail will be developed in conjunction with a lighting specialist in the later detailed stages, in consultation with & as part of the planning requirements, with a final lighting assessment of lux levels & light spill anticipated to be secured under a planning condition.

The lighting strategy to the front façade of Block A will also be developed with a lighting specialist to enhance the architectural features and this will involve on-site night time testing of lighting options.

Code	Qty	Description	Symbol name	Symbol
S.3815W	63	MICROSLOT UP-DOWN 3K	SC1	
C.8055W	30	CONCRETE WALL 3K	XA1	
S.2111W	21	TONIGHT 200 BOLLARD 360	XB1	
PTP-70-LED-4K-76	24	LED Post Top 76mm Spigot 70W 3K mounted on 3m	XC1	
0068127	221m	START FLEX IP65 830 2650LM	XD1	
S.7018W	72	CONTINUOUS LINE 1m FULL GLASS ACID-ETCHED	XF1	
-	TBC	Art Deco Type Luminaire 1	XG1	
-	TBC	Art Deco Type Luminaire 2	XG2	
S.5428W	86	MINIPLANO Confort	XU2	

Project Name: Ravenscourt Park Hospital, Hammersmith
Document Title: External Lighting Assessment
Document Status: Planning Submission



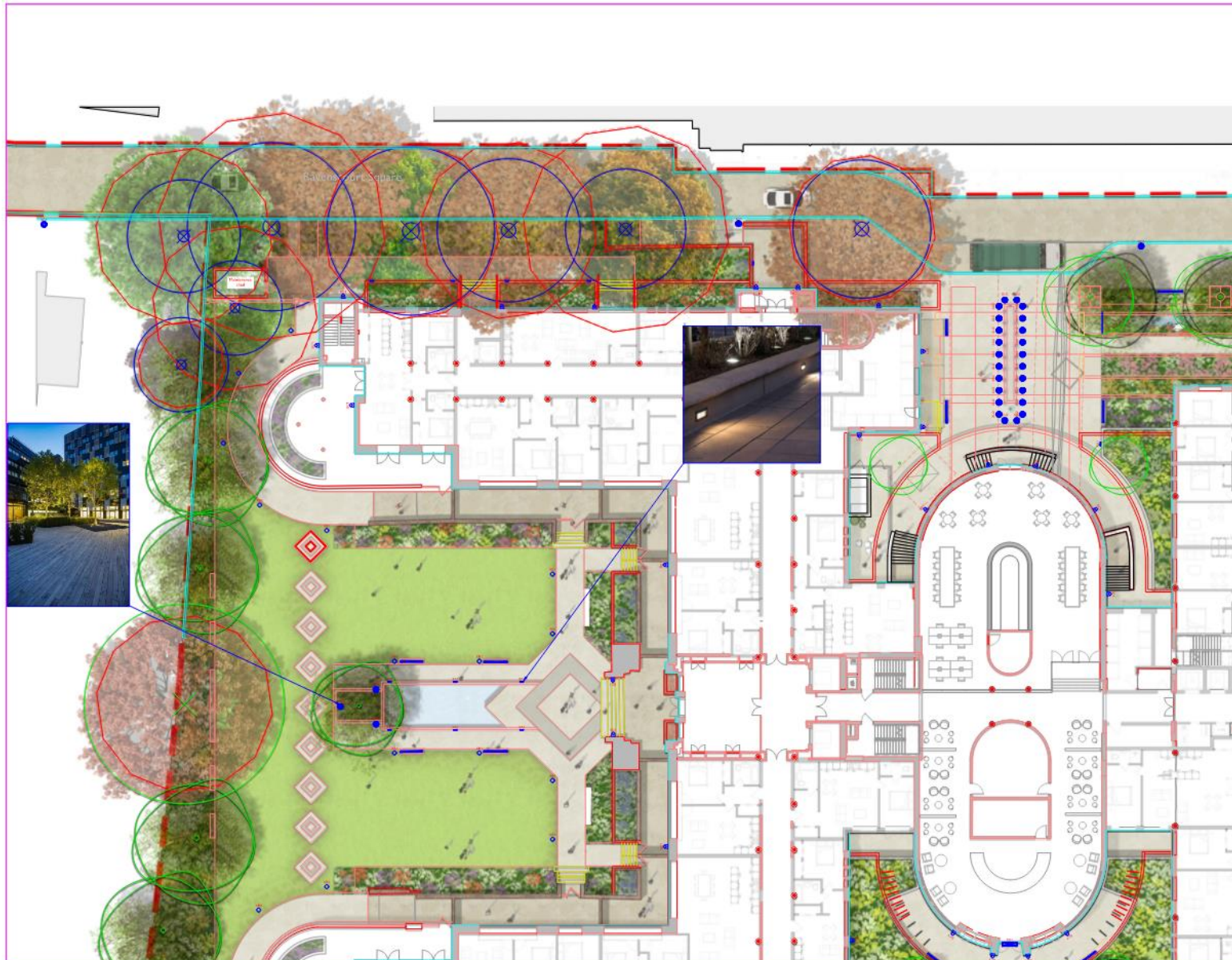
Project Name: Ravenscourt Park Hospital, Hammersmith

Document Title: External Lighting Assessment

Document Status: Planning Submission

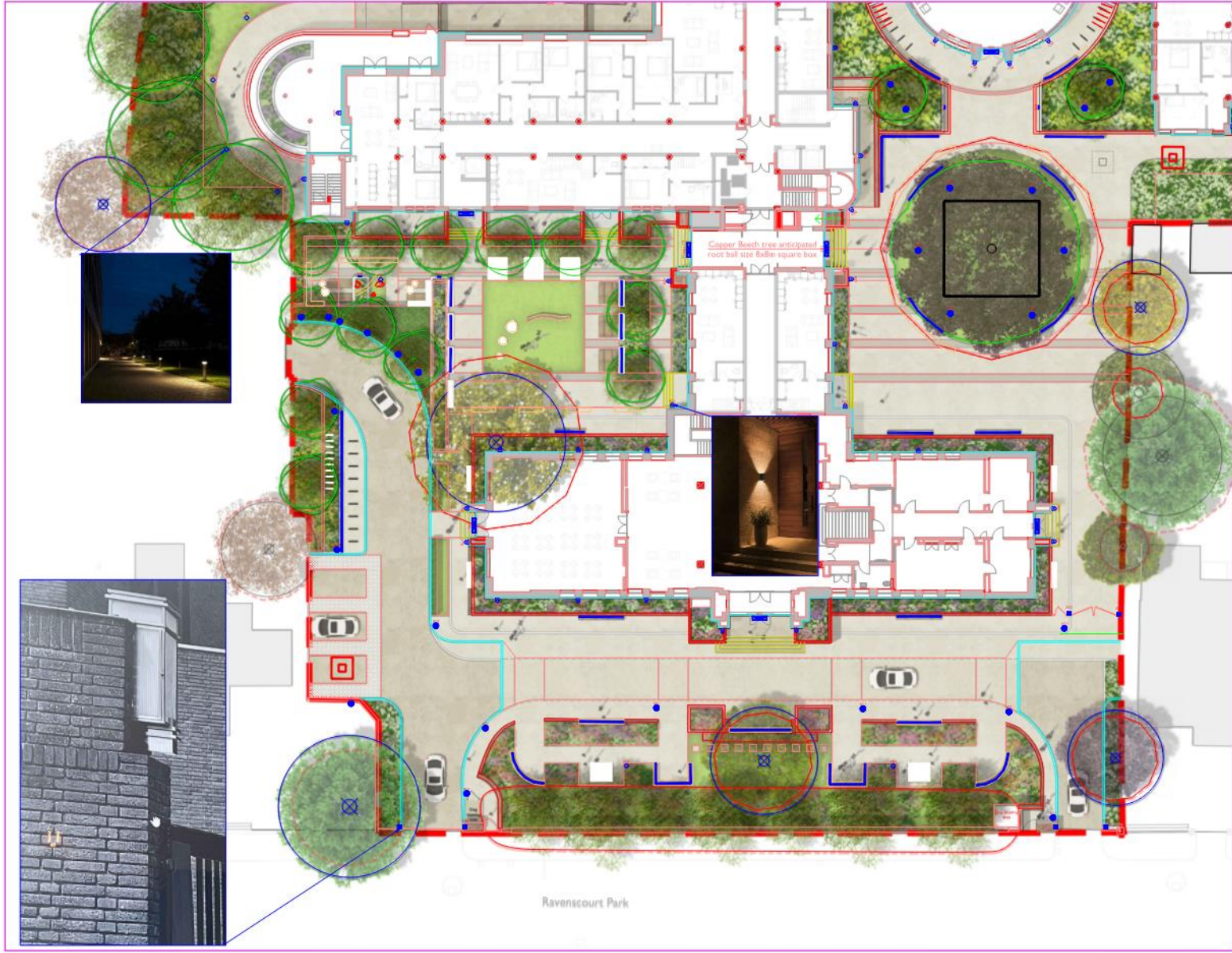


Cudd Bentley
Consulting

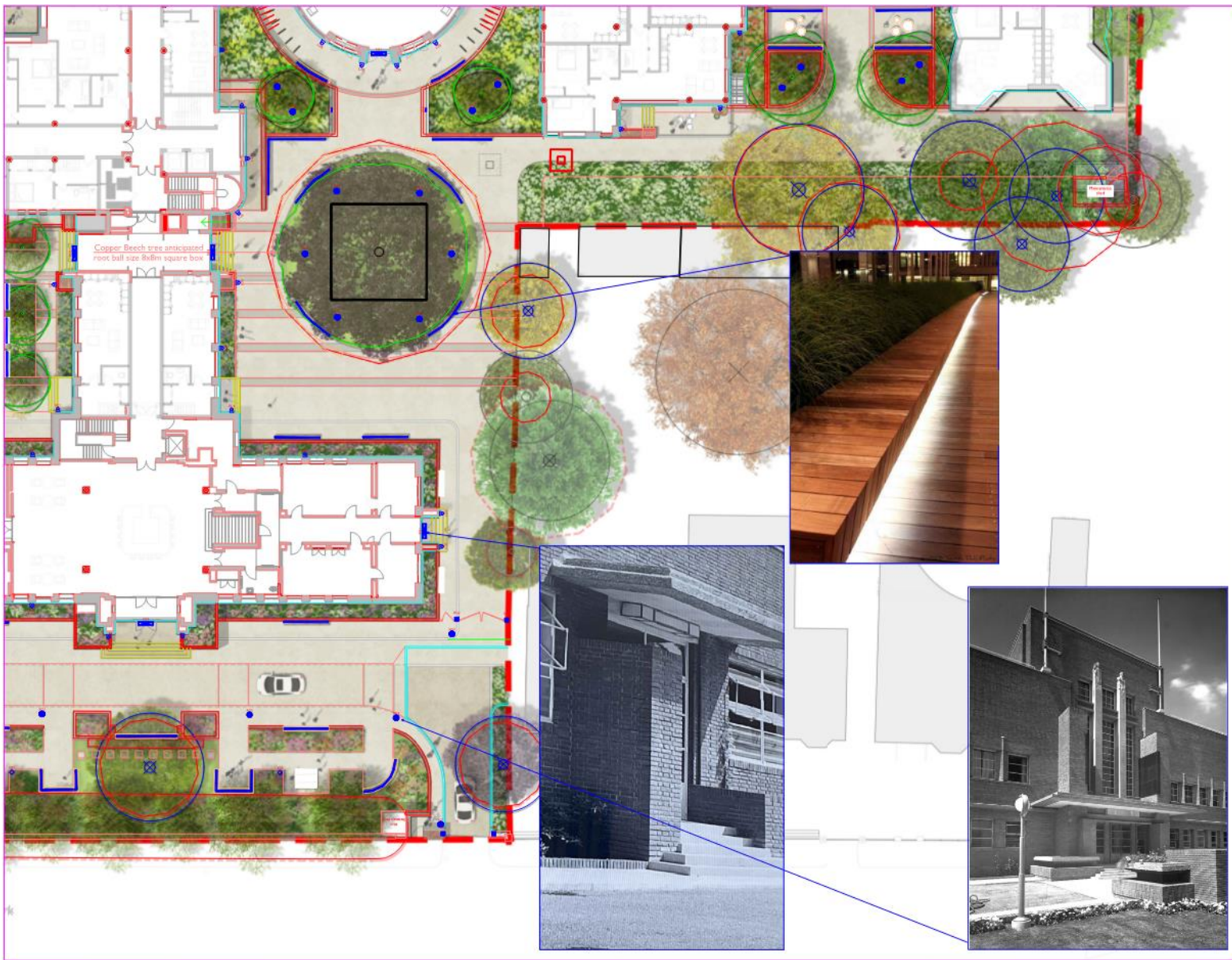


Project Name: Ravenscourt Park Hospital, Hammersmith
Document Title: External Lighting Assessment
Document Status: Planning Submission





Project Name: Ravenscourt Park Hospital, Hammersmith
Document Title: External Lighting Assessment
Document Status: Planning Submission



Project Name: Ravenscourt Park Hospital, Hammersmith

Document Title: External Lighting Assessment

Document Status: Planning Submission



Cudd Bentley
Consulting



Project Name: Ravenscourt Park Hospital, Hammersmith

Document Title: External Lighting Assessment

Document Status: Planning Submission



Cudd Bentley
Consulting



