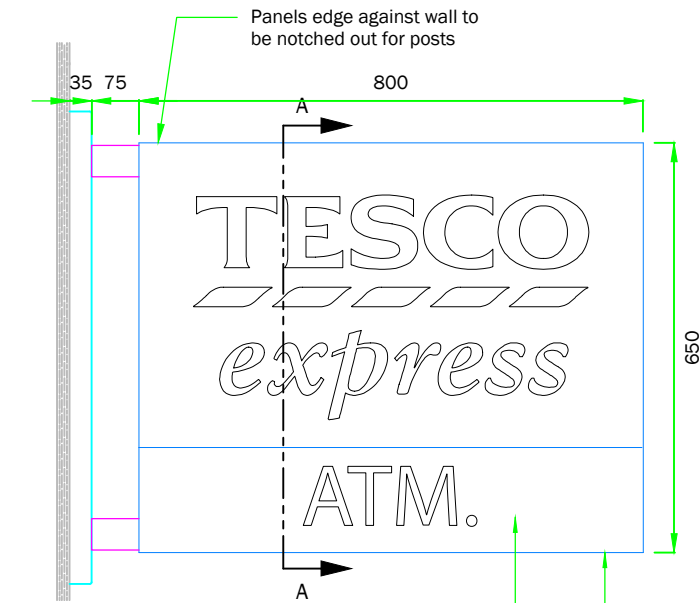
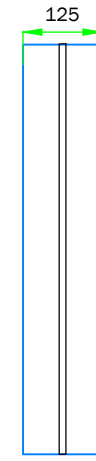


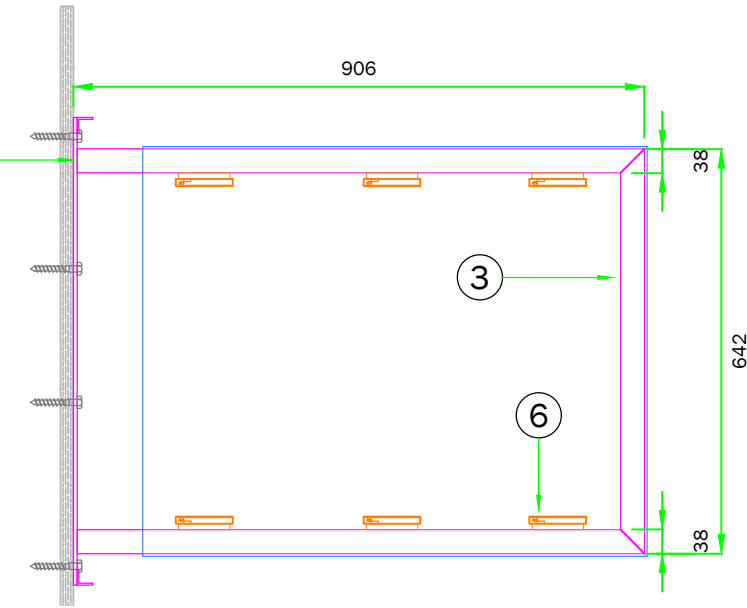
# Internally Illuminated Projecting Sign



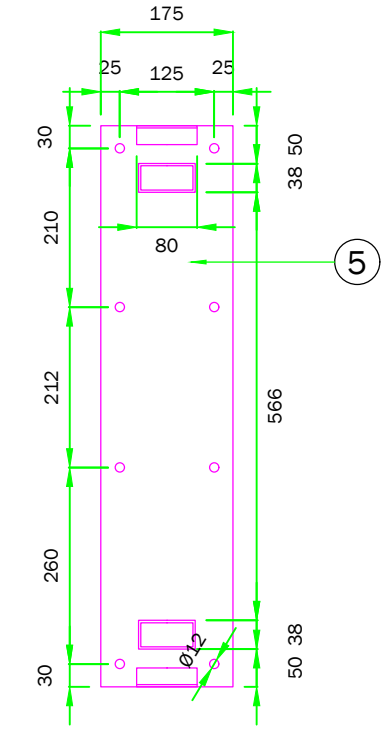
○ **Front Elevation - Remote Version**  
scale 1:12



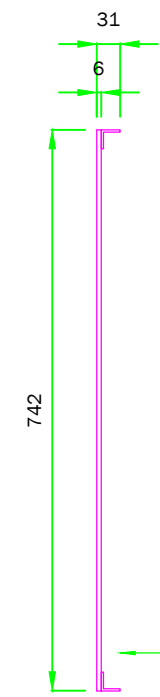
○ **End Elevation**  
scale 1:12



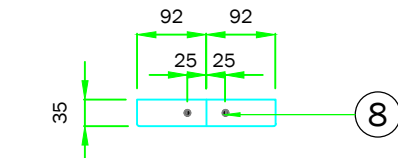
○ **Framework: Front Elevation**  
scale 1:12



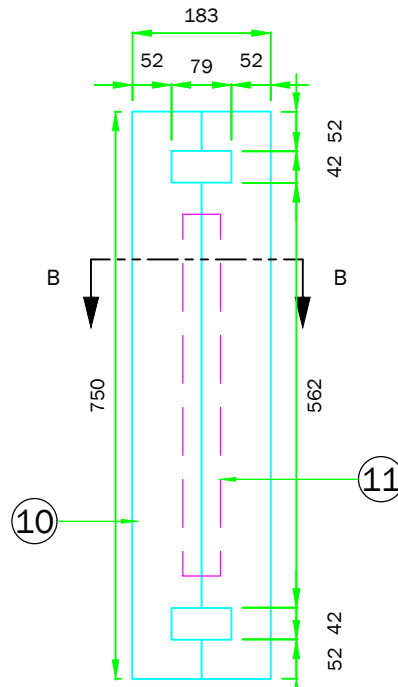
○ **Base Plate: Front Elevation**  
scale 1:10



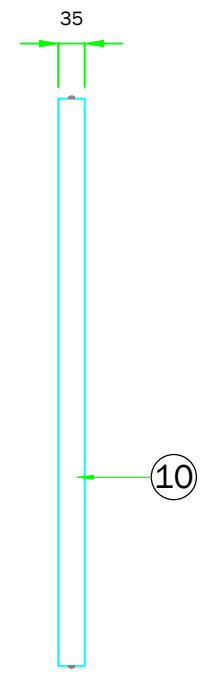
○ **Base Plate: End Elevation**  
scale 1:10



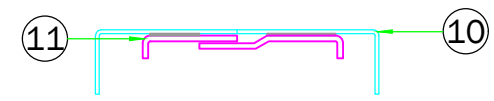
○ **Shroud: Plan View**  
scale 1:12



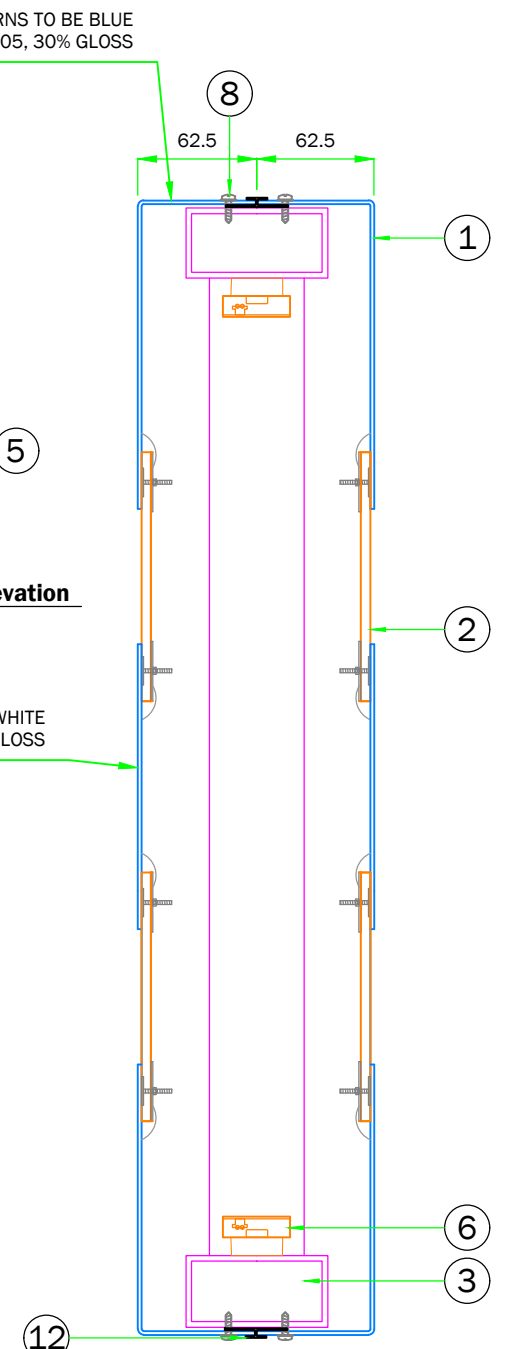
○ **Shroud: Front Elevation**  
scale 1:12



○ **Shroud: End Elevation**  
scale 1:12



○ **B Section B-B**  
scale 1:4



○ **A Section A-A**  
scale 1:4

SPECIFICATION					
Item	Description	Qty.	Tick Box	Initials	
1	Face panels folded from 2mm aluminium, FACE - to be powdercoated WHITE RAL 9010, 30% gloss RETURNS - to be powdercoated BLUE Ral 5005, 30% gloss.	2			
2	5mm acrylic fixed to rear of panel with big head fixings and Simson ISR 70-03. For 'TESCO' Opal 030 with Avery 4509 translucent vinyl applied to face to be used. For blips under 'TESCO' Opal 030 with Avery 5600 LD-082A translucent vinyl applied to face to be used. For 'EXPRESS' letters and additional 'CASH' text, Opal 030 with Avery 5600 LD-082A translucent vinyl applied to face to be used.	as req			
3	2no. framework legs from 75x38x3mm mitred aluminium box section, with 75x38x3mm vertical at end. To be powdercoated BLUE RAL 5005, 30% gloss	1			
4	25x25x3mm aluminium angles welded to top and bottom of base plate for fixing shroud.	2			
5	Base plate from 6mm aluminium welded to frame.	1			
6	Tetra Edge Strip LED Product Code: GEWHBIP2	6			
7	Transformer to suit LEDs.	as req			
8	No.8x13mm flange head self tapping screws for fixing face panels to frame, touched up WHITE RAL 9010, 30% gloss	as req			
9	Suitable fixings for fixing base plate to substrate	8			
10	Shroud (in two halves) fabricated from 2mm aluminium, to be powdercoated BLUE RAL 5005, 30% gloss.	1			
11	Shroud joggle from 3mm aluminium flatbar and joggled flat bar, bonded to inside of shroud using 3M 4980.	1			
12	H-section wallboard extrusion to run perimeter of sign, To be powdercoated BLUE RAL 5005, 30% gloss.	as req			