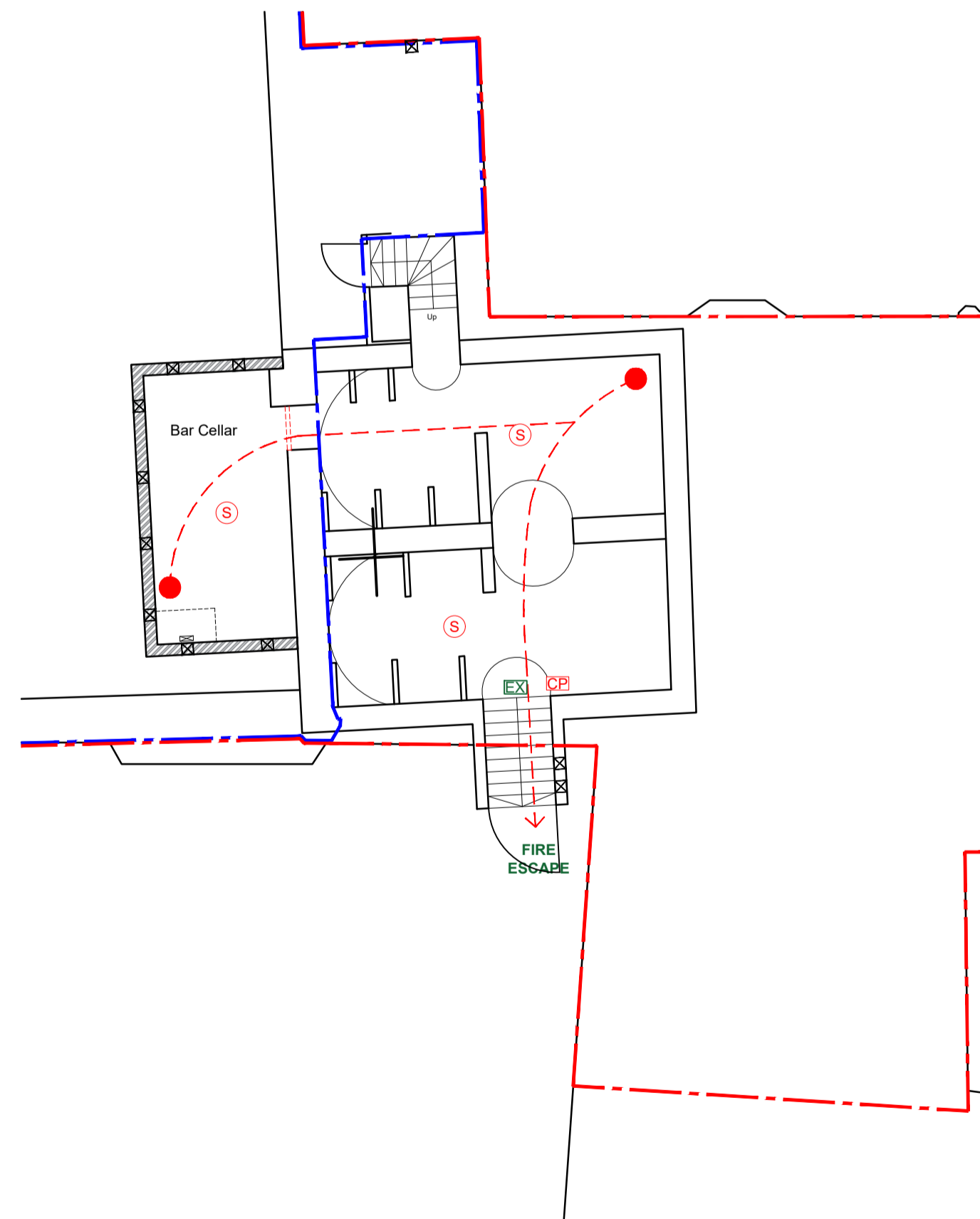
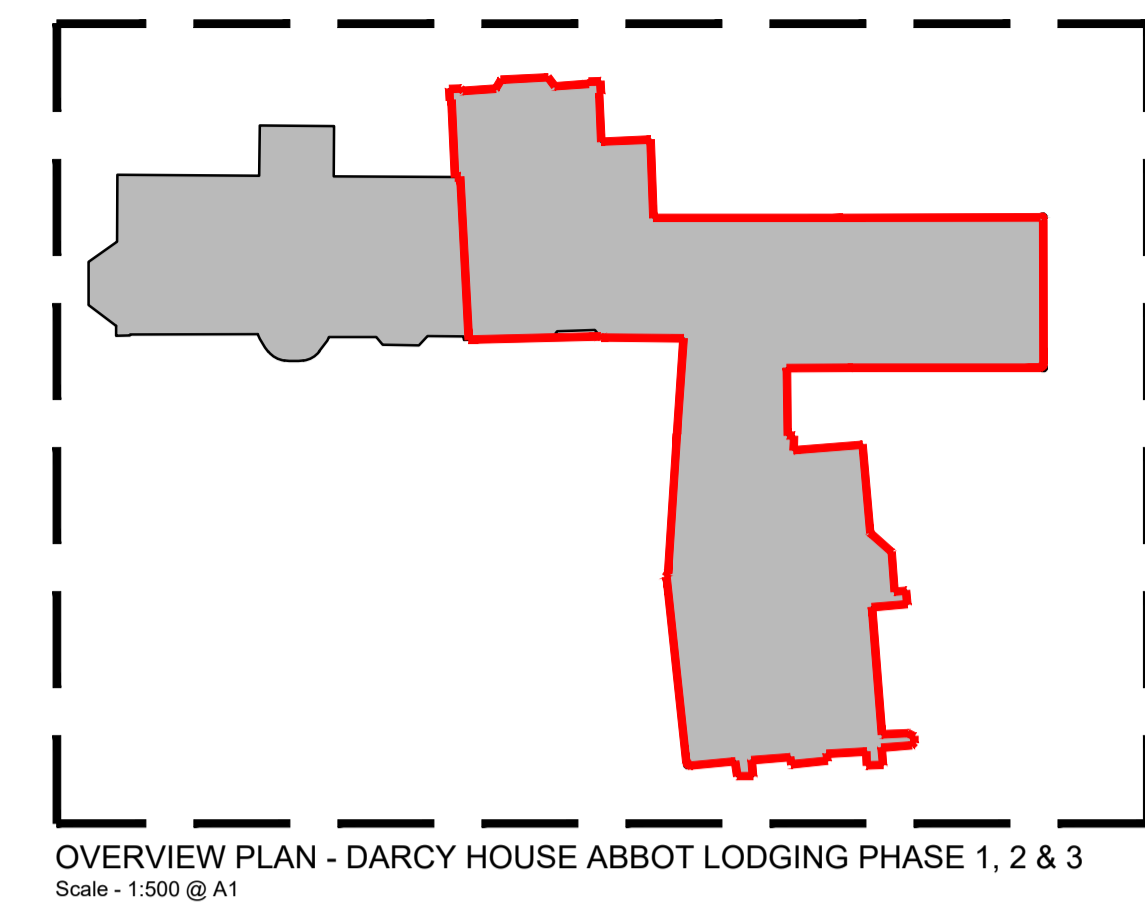
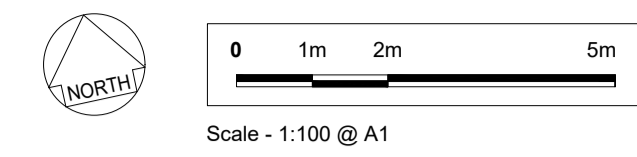
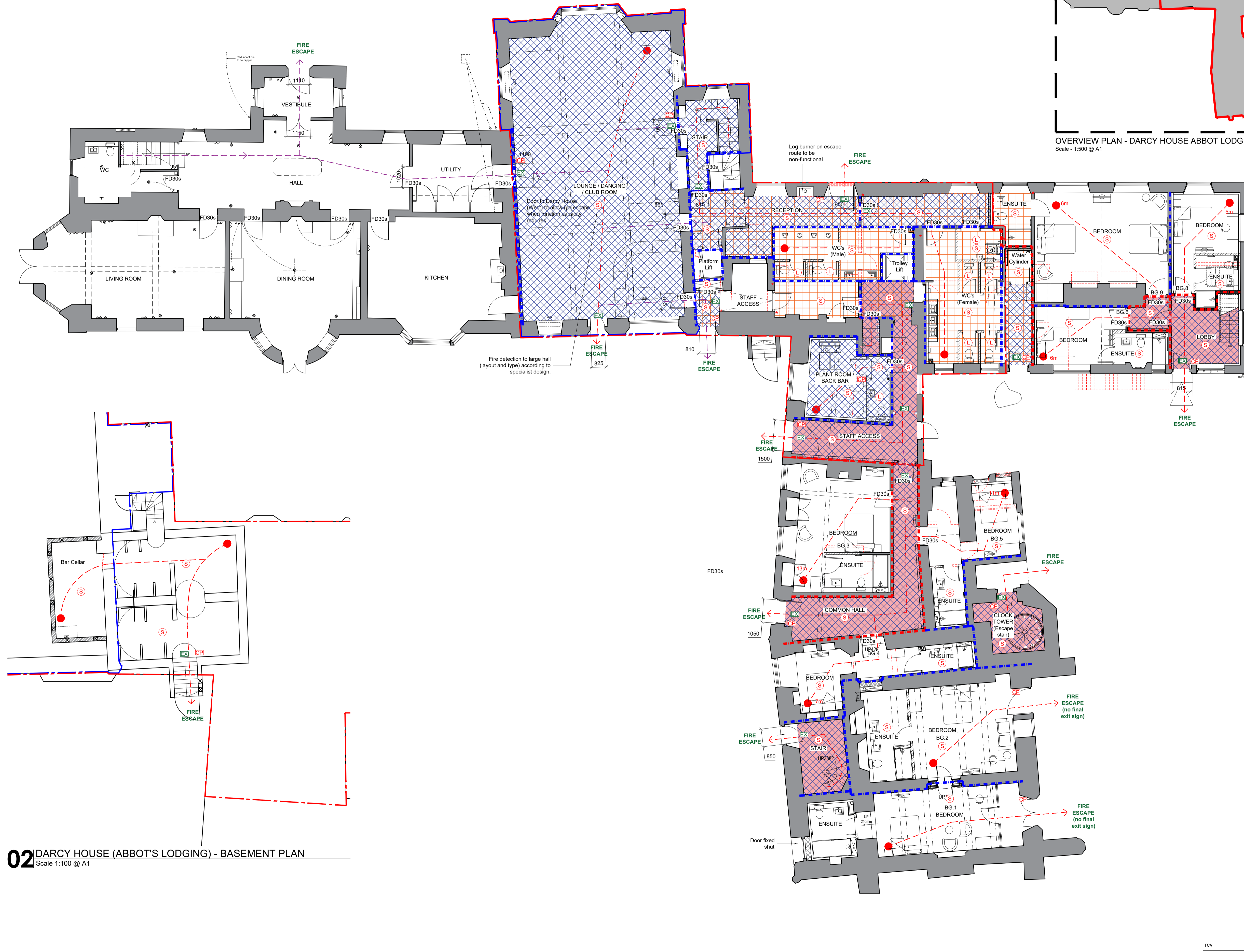


02 DARCY HOUSE (ABBOT'S LODGING) - BASEMENT PLAN
Scale 1:100 @ A1



01 DARCY HOUSE (ABBOT'S LODGING) - FIRE STRATEGY - GROUND FLOOR PLAN
Scale 1:100 @ A1



- NOTES**
- All dimensions and levels are to be checked on site.
 - Any discrepancies are to be reported to the Wighton Architects Ltd before any work commences.
 - This drawing shall not be scaled to ascertain any dimensions. Work to figured dimensions only.
 - This drawing shall not be reproduced without express written permission from Wighton Architects Ltd.
 - Title overlay drawings and ownership boundaries are produced using all reasonable endeavors. Wighton Architects Ltd cannot be responsible for the accuracy or scale discrepancy of base plans supplied to them.

- General Notes**
- Lift sizes to be confirmed by client and supplier.
 - Fire detection system to be category L1 in accordance with BS5839-1.
 - Plan to be read with conjunction with Fire engineer's report by ADB Fire Solutions Ltd.
 - All roof spaces to be provided with void detection.

- Key**
- Fire protected escape route - Stair / corridor.
 - Non-maintained emergency lighting with min. 1 hour back up power supply. All to be in accordance with BS4286-1.
 - Ceiling Voids over 800mm in height to be provided with void detection.
 - Smoke detector (type, position, sounder requirement, and number to specialist contractor's design)
 - Heat detector (type, position, sounder requirement, and number to specialist contractor's design)
 - Beacon
 - Manual call point
 - Exit signs. All signage to be in accordance with BS5499-1 and to indicate the direction of escape.
 - 30min fire resisting construction.
 - 60min fire resisting construction.
 - Escape route.
 - Alternative escape route.
 - Escape distance from suites (measured from door to bedroom corridor - as described in AD B1 table 2.1).

rev	date	drawn	checked
J	18/05/22	JSE	SW
Staff access stair and spiral stair updated.			
H	27/04/22	JSE	SW
Minor revision to GA layout			
rev	date	drawn	checked
G	22/04/22	JSE	SW
Fire strategy updated to show 60min fire resisting construction.			
rev	date	drawn	checked
F	28/02/22	JSE	SW
Fire strategy updated to include revisions to GA's. Early warning alarm system and emergency lighting requirements added to drawings.			
rev	date	drawn	checked
E	21/01/22	JSE	SW
Plan updated to suit latest layout			
rev	date	drawn	checked
D	06/12/21	JSE	SW
Plan updated to suit latest layout			
rev	date	drawn	checked
C	01/11/21	JSE	SW
Basement plan added. West wing escape route added.			
rev	date	drawn	checked
B	26/10/21	JSE	SW
Layout updated in line with GA's			
rev	date	drawn	checked
A	29/09/21	JSE	SW
Fire strategy updated in line with fire engineer's comments			

drawing stage CONSTRUCTION
drawing status CONSTRUCTION
client CITY & COUNTRY RESIDENTIAL LTD

project ST OSYTH'S PRIORY, THE BURY ST OSYTH, ESSEX, CO16 8HS
DARCY HOUSE

drawing title DARCY HOUSE - ABBOT LODGING PHASE 1,2&3 - FIRE STRATEGY (GF & BASEMENT PLANS)
date 30/06/2021 drawn JSE
scale 1:100 @ A1 checked SW



rev	date	drawn	checked	Job No	DWG No	Rev
K	08/08/22	JSE	SW	107/07	(59)610	K

Fire strategy plans updated to reflect changes to phase 2 GA's