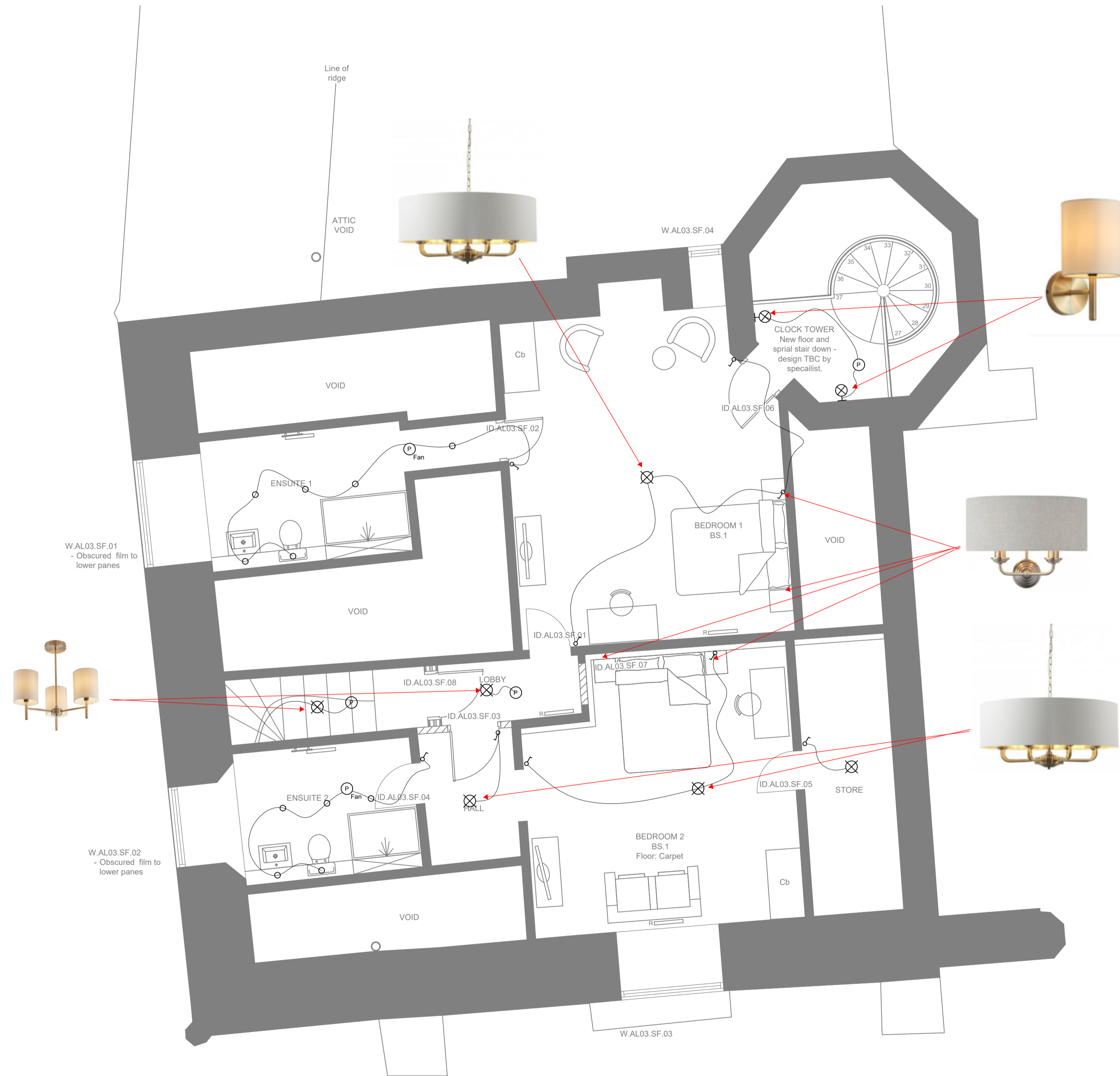


LEGEND

- ⚡ 1 WAY SWITCH
- ⚡ 2 WAY SWITCH
- ⚡ 3 WAY SWITCH
- ⚡ 2 WAY 2 GANG SWITCH
- ◻ DIMMER SWITCH
- ⊗ CEILING MOUNTED PENDANT LIGHT (CLIENT SUPPLIED)
- ⊕ CEILING MOUNTED BULKHEAD LIGHT
- ⊗ WALL MOUNTED LIGHT (CLIENT SUPPLIED)
- SPOT LIGHT
- NON-CORROSIVE LIGHT
- EMC WALL MOUNTED EMERGENCY BULKHEAD
- EXIT EMERGENCY EXIT LIGHT
- ⊙ EMERGENCY PIN SPOT
- ⊙ PIR DETECTOR
- LAMP (CLIENT SUPPLIED)



Notes:

1. Do not scale from this drawing, use figured dimensions only.
2. All dimensions to be verified on site.
3. This drawing is to be read in conjunction with all related architects and engineers drawings and any other related information.

Rev	Description	Drawn	Date
A	Initial drawing issue	J.H.	22/06/23

Drawing Status:

FOR APPROVAL



Laser Electrical Services Limited
 11 Springfield Lyons Approach
 Chelmsford
 Essex CM2 5LB
 T: 01245 398380
 F: 01245 809496
 E: info@laserelectrical.com
 W: www.laserelectrical.com

Client:

City & Country
Bentfield Place, Bentfield Road
Stansted, Essex CM24 8HL

Project:

Darcy House
St. Osyth's Priory, The Bury
St. Osyth, Essex CO16 8HS

Drawing Title:

Electrical Services
Phase 3 Second Floor
Lighting Layout

Scale:	Date:	Drawn:	Checked:
1:50@A1	06/2023	J.H.	R.F.

Drawing Number:	Revision:
L4384R/E/105	A