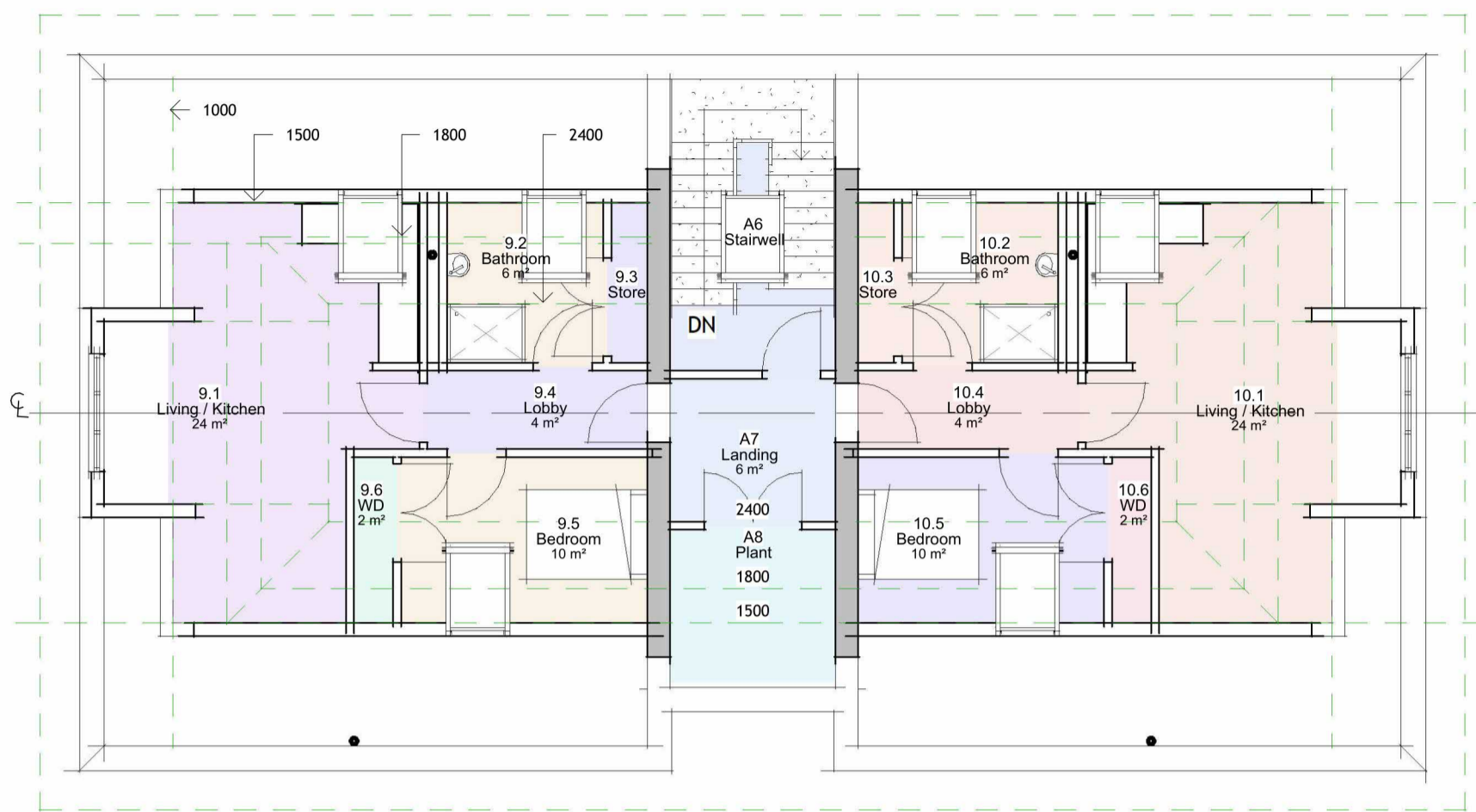


This Drawing is a Copyright of
CRONIN DEVELOPMENT CONSULTANCY LIMITED
 Do Not Scale from this Drawing.
 Use figured dimensions ONLY. If in doubt ASK!
 ALL dimensions to be checked on site before work commences.
 ANY discrepancies are to be reported immediately.
 This drawing to be read in conjunction with all Project and Consultants Performance Specifications, Structural / Civil Engineers drawings / calculations, and any Specialist Sub-Contractors Designed Element drawings.



C - First
 1 : 100



D - Second
 1 : 100



B - Ground 131.45
 1 : 100

Room Schedule Planning

| Number | Name | Level | Area | Perimeter | Area ft² | Volume |
|--------|------------------|-------------------|----------|-----------|------------|----------|
| 1.1 | Living / Kitchen | B - Ground 131.45 | 17.94 m² | 17150 | 193.14 ft² | 46.83 m³ |
| 1.2 | Bedroom | B - Ground 131.45 | 10.07 m² | 13552 | 108.36 ft² | 26.27 m³ |
| 1.3 | WD | B - Ground 131.45 | 1.01 m² | 4582 | 10.92 ft² | 2.65 m³ |
| 1.4 | Ensuite | B - Ground 131.45 | 3.73 m² | 8402 | 40.13 ft² | 9.73 m³ |
| 1.5 | Store | B - Ground 131.45 | 1.09 m² | 4352 | 11.69 ft² | 2.84 m³ |
| 1.6 | Inner Lobby | B - Ground 131.45 | 3.13 m² | 7818 | 33.71 ft² | 8.17 m³ |
| 1.7 | Lobby | B - Ground 131.45 | 1.90 m² | 5632 | 20.48 ft² | 4.97 m³ |
| 2.1 | Living / Kitchen | B - Ground 131.45 | 17.94 m² | 17150 | 193.14 ft² | 46.83 m³ |
| 2.2 | Bedroom | B - Ground 131.45 | 10.07 m² | 13552 | 108.36 ft² | 26.27 m³ |
| 2.3 | WD | B - Ground 131.45 | 1.01 m² | 4582 | 10.92 ft² | 2.65 m³ |
| 2.4 | Ensuite | B - Ground 131.45 | 3.73 m² | 8402 | 40.13 ft² | 9.73 m³ |
| 2.5 | Store | B - Ground 131.45 | 1.09 m² | 4352 | 11.69 ft² | 2.84 m³ |
| 2.6 | Inner Lobby | B - Ground 131.45 | 3.13 m² | 7818 | 33.71 ft² | 8.17 m³ |
| 2.7 | Lobby | B - Ground 131.45 | 1.90 m² | 5632 | 20.48 ft² | 4.97 m³ |
| 3.1 | Living / Kitchen | B - Ground 131.45 | 17.94 m² | 17150 | 193.14 ft² | 46.83 m³ |
| 3.2 | Bedroom | B - Ground 131.45 | 10.07 m² | 13552 | 108.36 ft² | 26.27 m³ |
| 3.3 | WD | B - Ground 131.45 | 1.01 m² | 4582 | 10.92 ft² | 2.65 m³ |
| 3.4 | Ensuite | B - Ground 131.45 | 3.73 m² | 8402 | 40.13 ft² | 9.73 m³ |
| 3.5 | Store | B - Ground 131.45 | 1.09 m² | 4352 | 11.69 ft² | 2.84 m³ |
| 3.6 | Inner Lobby | B - Ground 131.45 | 3.13 m² | 7818 | 33.71 ft² | 8.17 m³ |
| 3.7 | Lobby | B - Ground 131.45 | 1.90 m² | 5632 | 20.48 ft² | 4.97 m³ |
| 4.1 | Living / Kitchen | B - Ground 131.45 | 17.94 m² | 17150 | 193.14 ft² | 46.83 m³ |
| 4.2 | Bedroom | B - Ground 131.45 | 10.07 m² | 13552 | 108.36 ft² | 26.27 m³ |
| 4.3 | WD | B - Ground 131.45 | 1.01 m² | 4582 | 10.92 ft² | 2.65 m³ |
| 4.4 | Ensuite | B - Ground 131.45 | 3.73 m² | 8402 | 40.13 ft² | 9.73 m³ |
| 4.5 | Store | B - Ground 131.45 | 1.09 m² | 4352 | 11.69 ft² | 2.84 m³ |
| 4.6 | Inner Lobby | B - Ground 131.45 | 3.13 m² | 7818 | 33.71 ft² | 8.17 m³ |
| 4.7 | Lobby | B - Ground 131.45 | 1.90 m² | 5632 | 20.48 ft² | 4.97 m³ |
| 5.1 | Living / Kitchen | C - First | 17.94 m² | 17150 | 193.14 ft² | 46.83 m³ |
| 5.2 | Bedroom | C - First | 10.07 m² | 13552 | 108.36 ft² | 26.27 m³ |
| 5.3 | WD | C - First | 1.01 m² | 4582 | 10.92 ft² | 2.65 m³ |
| 5.4 | Ensuite | C - First | 3.73 m² | 8402 | 40.13 ft² | 9.73 m³ |
| 5.5 | Store | C - First | 1.09 m² | 4352 | 11.69 ft² | 2.84 m³ |
| 5.6 | Inner Lobby | C - First | 3.13 m² | 7818 | 33.71 ft² | 8.17 m³ |
| 5.7 | Lobby | C - First | 1.90 m² | 5632 | 20.48 ft² | 4.97 m³ |
| 6.1 | Living / Kitchen | C - First | 17.94 m² | 17150 | 193.14 ft² | 46.83 m³ |
| 6.2 | Bedroom | C - First | 10.07 m² | 13552 | 108.36 ft² | 26.27 m³ |
| 6.3 | WD | C - First | 1.01 m² | 4582 | 10.92 ft² | 2.65 m³ |
| 6.4 | Ensuite | C - First | 3.73 m² | 8402 | 40.13 ft² | 9.73 m³ |
| 6.5 | Store | C - First | 1.09 m² | 4352 | 11.69 ft² | 2.84 m³ |
| 6.6 | Inner Lobby | C - First | 3.13 m² | 7818 | 33.71 ft² | 8.17 m³ |
| 6.7 | Lobby | C - First | 1.90 m² | 5632 | 20.48 ft² | 4.97 m³ |
| 7.1 | Living / Kitchen | C - First | 17.94 m² | 17150 | 193.14 ft² | 46.83 m³ |
| 7.2 | Bedroom | C - First | 10.07 m² | 13552 | 108.36 ft² | 26.27 m³ |
| 7.3 | WD | C - First | 1.01 m² | 4582 | 10.92 ft² | 2.65 m³ |
| 7.4 | Ensuite | C - First | 3.73 m² | 8402 | 40.13 ft² | 9.73 m³ |
| 7.5 | Store | C - First | 1.09 m² | 4352 | 11.69 ft² | 2.84 m³ |
| 7.6 | Inner Lobby | C - First | 3.13 m² | 7818 | 33.71 ft² | 8.17 m³ |
| 7.7 | Lobby | C - First | 1.90 m² | 5632 | 20.48 ft² | 4.97 m³ |
| 8.1 | Living / Kitchen | C - First | 17.94 m² | 17150 | 193.14 ft² | 46.83 m³ |
| 8.2 | Bedroom | C - First | 10.07 m² | 13552 | 108.36 ft² | 26.27 m³ |
| 8.3 | WD | C - First | 1.01 m² | 4582 | 10.92 ft² | 2.65 m³ |
| 8.4 | Ensuite | C - First | 3.73 m² | 8402 | 40.13 ft² | 9.73 m³ |
| 8.5 | Store | C - First | 1.09 m² | 4352 | 11.69 ft² | 2.84 m³ |
| 8.6 | Inner Lobby | C - First | 3.13 m² | 7818 | 33.71 ft² | 8.17 m³ |
| 8.7 | Lobby | C - First | 1.90 m² | 5632 | 20.48 ft² | 4.97 m³ |
| 9.1 | Living / Kitchen | D - Second | 24.33 m² | 24034 | 261.90 ft² | 40.74 m³ |
| 9.2 | Bathroom | D - Second | 5.89 m² | 9712 | 63.45 ft² | 12.46 m³ |
| 9.3 | Store | D - Second | 1.35 m² | 6012 | 14.54 ft² | 2.86 m³ |
| 9.4 | Lobby | D - Second | 4.05 m² | 9148 | 43.58 ft² | 9.72 m³ |
| 9.5 | Bedroom | D - Second | 9.61 m² | 12642 | 103.45 ft² | 20.42 m³ |
| 9.6 | WD | D - Second | 1.53 m² | 6292 | 16.44 ft² | 3.24 m³ |
| 10.1 | Living / Kitchen | D - Second | 11.41 m² | 14500 | 122.83 ft² | 18.58 m³ |
| 10.2 | Bathroom | D - Second | 5.89 m² | 9712 | 63.45 ft² | 12.46 m³ |
| 10.3 | Store | D - Second | 1.35 m² | 6012 | 14.54 ft² | 2.86 m³ |
| 10.4 | Lobby | D - Second | 4.05 m² | 9148 | 43.58 ft² | 9.72 m³ |
| 10.5 | Bedroom | D - Second | 9.61 m² | 12642 | 103.45 ft² | 20.42 m³ |
| 10.6 | WD | D - Second | 1.53 m² | 6292 | 16.44 ft² | 3.24 m³ |
| A1 | Ent Lobby | B - Ground 131.45 | 4.18 m² | 8242 | 44.96 ft² | 10.90 m³ |
| A2 | Plant | B - Ground 131.45 | 1.46 m² | 5900 | 15.69 ft² | 3.80 m³ |
| A3 | Common Area | B - Ground 131.45 | 17.60 m² | 18907 | 189.49 ft² | 45.95 m³ |
| A4 | Landing | C - First | 22.00 m² | 23800 | 236.85 ft² | 57.43 m³ |
| A5 | Plant | C - First | 1.46 m² | 5900 | 15.69 ft² | 3.80 m³ |
| A6 | Stairwell | D - Second | 11.41 m² | 14500 | 122.83 ft² | 18.58 m³ |
| A7 | Landing | D - Second | 5.60 m² | 9492 | 60.28 ft² | 13.44 m³ |
| A8 | Plant | D - Second | 6.20 m² | 9962 | 66.73 ft² | 10.07 m³ |

| Rev | Date | Description | Issued by |
|-----|----------|--|-----------|
| 3 | 07/11/23 | Renumbered - PLANNING APPLICATION | AJC |
| 2 | 08/09/23 | Preliminary Planning Submission | AJC |
| 1 | 06/09/23 | Block Remodelled to increase to 10No units | AJC |



Cronin Development Consultancy Limited
 53 Springfield Crescent, Walmley, Sutton Coldfield,
 West Midlands, B76 2SS

PROJECT
Chartwell Grange, Halesowen Road, Cradley Heath

TITLE
PLANNING - Proposed Flooplans

CLIENT
 [Redacted]

STATUS
PLANNING APPLICATION

| | | |
|-------------------------|-------------------|--------------------------|
| DRAWN BY AJC | CHECKED BY AJC | DATE 07/11/23 |
| SCALE (@ A1) 1 : 100 | | PROJECT NUMBER 23-007 |
| DRAWING NUMBER P-002 | REV 3 | |