

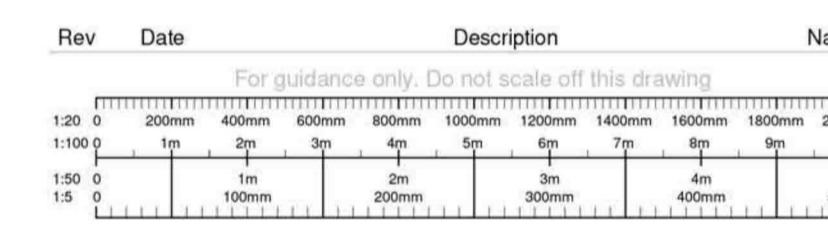
Notes
 1. This drawing has been prepared in accordance with the scope of W13 Ltd's appointment with its client and is subject to the terms and conditions of that appointment. W13 Ltd accepts no liability for any use of this document other than by its client and only for the purposes for which it was prepared and provided.
 2. If received electronically it is the recipient's responsibility to print to the correct scale. Only written dimensions should be used.

Room Legend

- Activity Room
- Circulation Space
- Dis WC / Baby Chng
- Escape Stair
- Female WC
- Kitchen
- Langar Hall
- Laundry Room
- Library
- Male WC
- Shoe Store
- Showers



Rev	Date	Description	Name
D	17.11.2018	Kitchen added to activity room, shoe stores removed, welfare facility redesigned. Shower room reintroduced, dis. wc. and baby change added.	HSJ
C	15.10.2018	Welfare facilities relocated, additional shoe stores added. External ramp relocated.	HSJ
B	02.07.2018	External ramp in front of secondary access added.	JH
A	20.03.2018	Sketch proposals updated to suit committee comments.	HSJ



Project: Refurbishment of Global House, Oldbury & Proposed Conversion to Sikh Temple
 Title: Existing Ground Floor Plan

Drawing Status	Drawn By	Checked
	HSJ	SJ
Project Number	Scale @ A1	Date Created
0039	1 : 100	05/22/14
Drawing Number		Drawing Revision
A-200		D