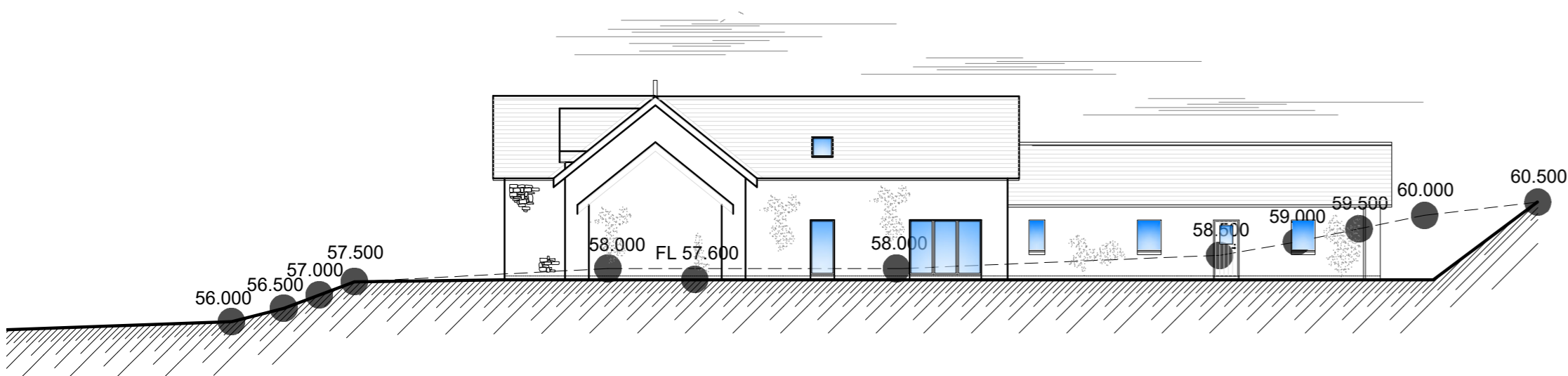
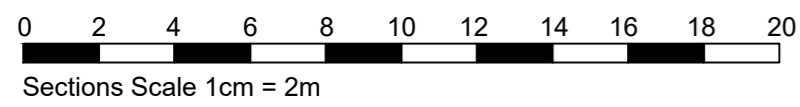
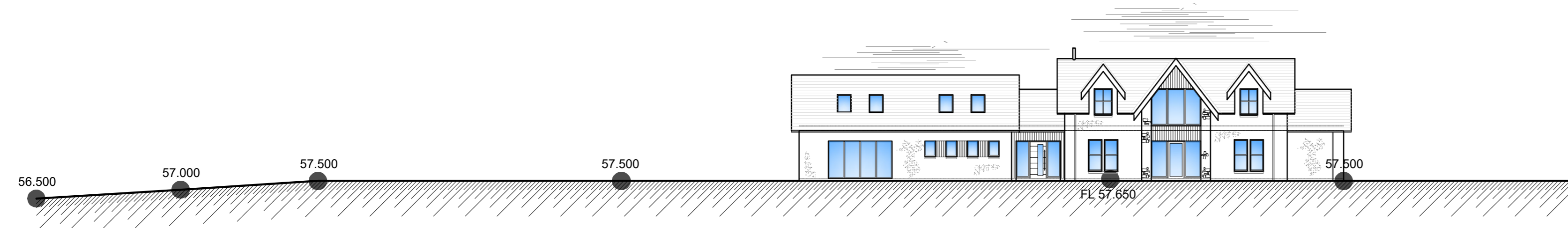




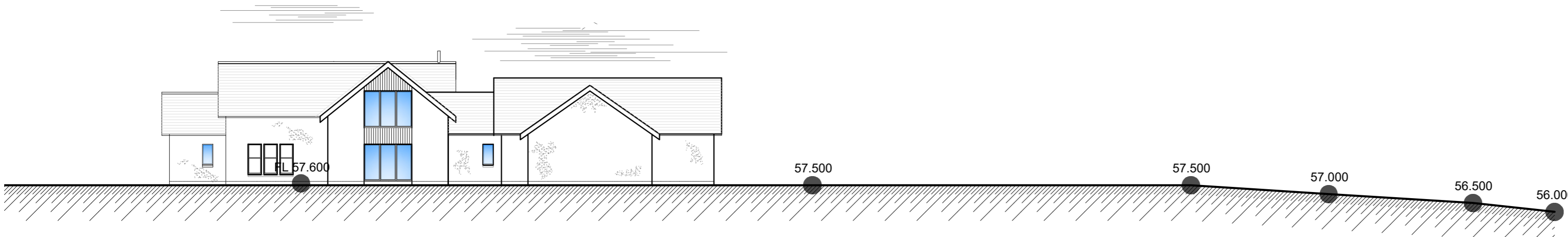
Section AA - Scale 1.200



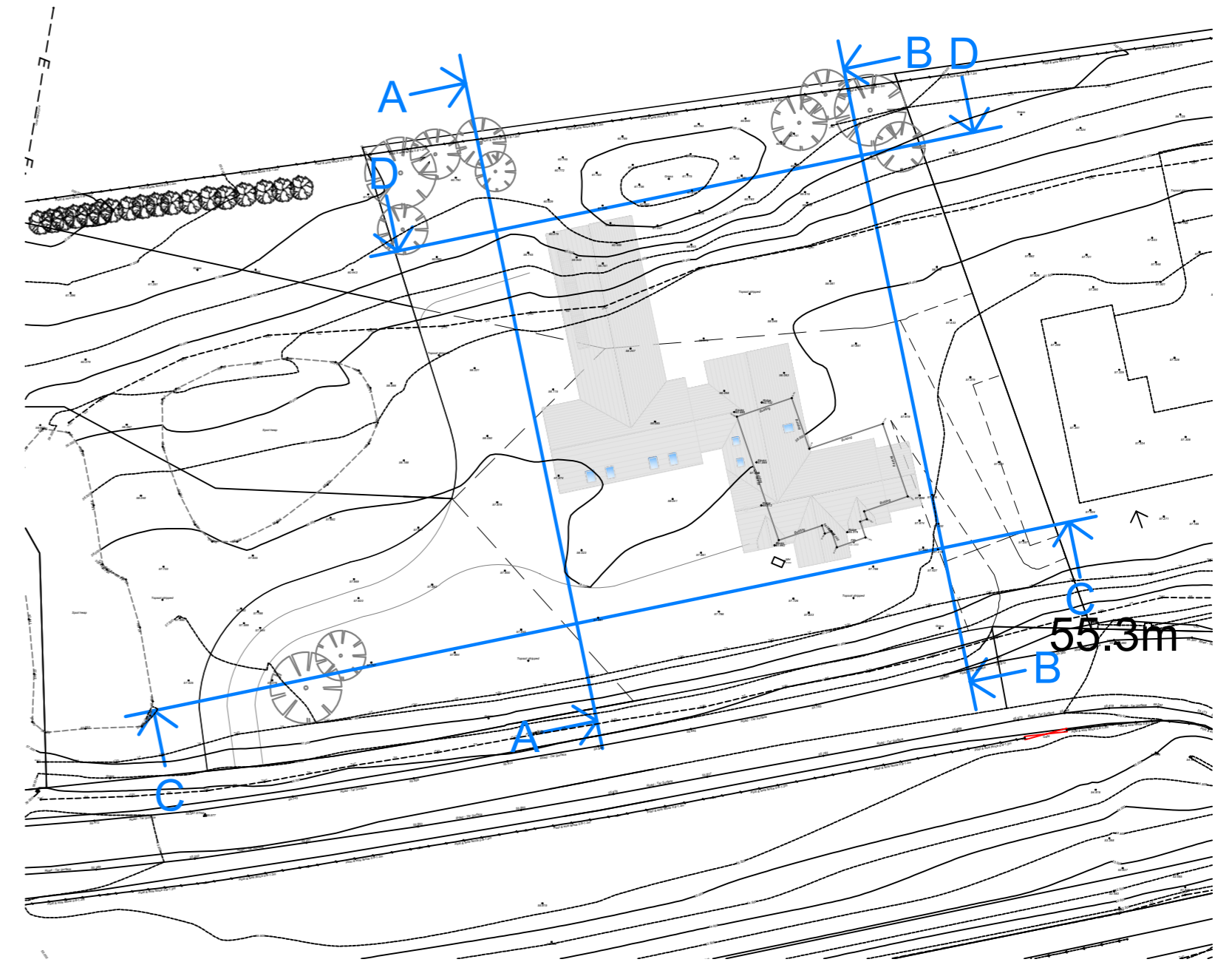
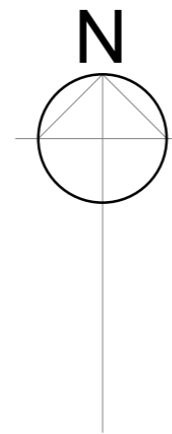
Section BB - Scale 1.200



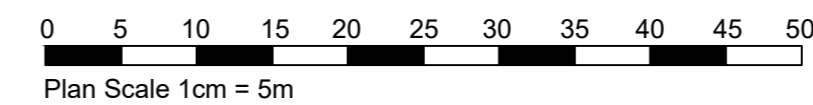
Section CC - Scale 1.200



Section DD - Scale 1.200



Site Plan - Scale 1.500



DO NOT SCALE FROM DRAWINGS	
<i>A.B. Roger & Young Ltd</i> Chartered Architect & Surveyors 9 Macgregor Street, Brechin Tel: 01356 622125 Fax: 622644 Email :- info@abrogerandyoung.com	
Job Title: <p style="text-align: center;">Proposed New House at Lochmill, by Forfar For Guild Homes</p>	
Scale	Date
1:200 & 1:500 @ A2	July 2023
Drawing Title	Drawn By
Level Sections	KF
Drawing No.	Checked By
2023 LMF 09	AHW
Revisions:	