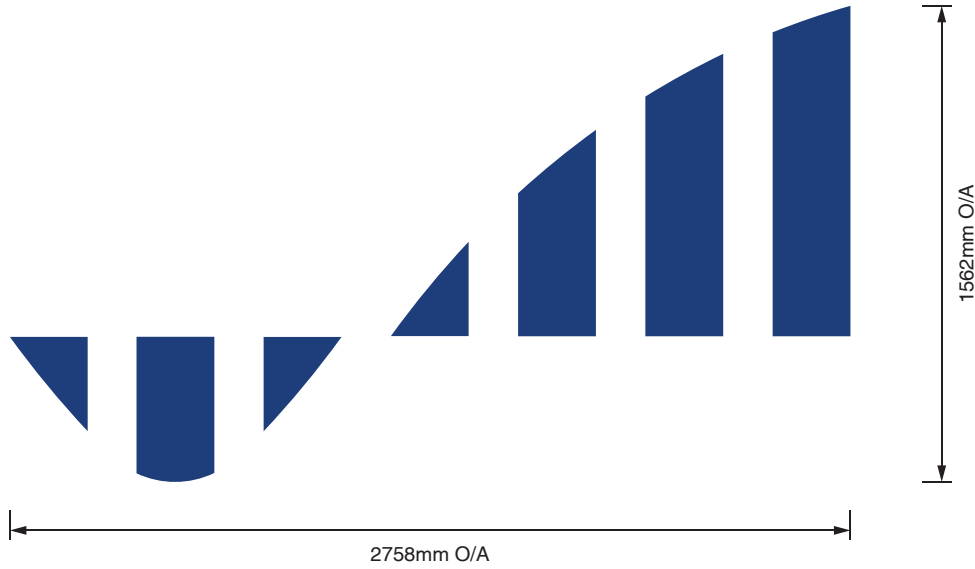


**S Item A**  
 Qty 2  
 7 piece 50mm deep built up logo - fabricated from 3mm aluminium,  
 powdercoated 1 colour with ACM back panels  
 Size: 2758mm x 1562mm  
 Scale 1:10

FACE VIEW



SIDE VIEW



Client: Wilten Construction	Project: Bridge Croydon	Date: 01/11/23	Revision: 3	Job No: 38362
Estimator: Ben Ashdown	Revision Details: Revision 2 Revision 3 Revision 4	Signage Colours: 		
Designer: Kaleb Sharrott				

This artwork and its content is copyright of Magna Signs - © Magna Signs 1991. All rights reserved.

Any redistribution or reproduction of part or all of the contents in any form is prohibited other than the following: You may print or download to a local hard disk extracts for your personal and non-commercial use only. You may copy the content to individual third parties for their personal use, but only if you acknowledge the material. You may not, except with our express written permission, distribute or commercially exploit the content. Nor may you transmit it or store it in any other website or other form of electronic retrieval system.

**S Item B**

Qty 1

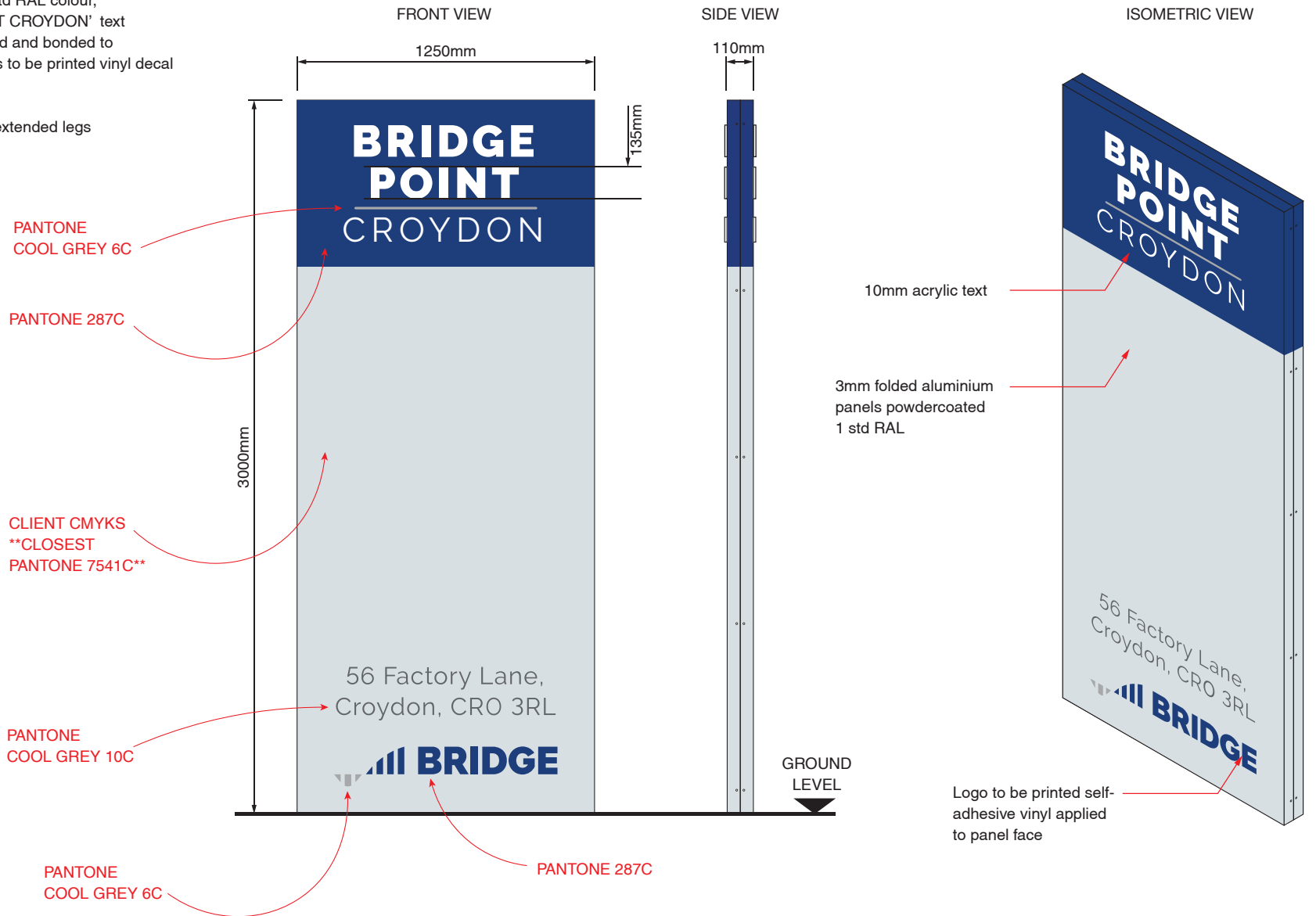
3mm folded panels powdercoated 2 std RAL colour, 110mm deep overall, "BRIDGE POINT CROYDON" text to be 10mm fret cut opal acrylic pinned and bonded to panel face, BRIDGE logo and address to be printed vinyl decal cut and applied to panel face.

Mild steel box section subframe with extended legs

- sign is non-illuminated.

Size: 1250mm x 3000mm

Scale 1:10

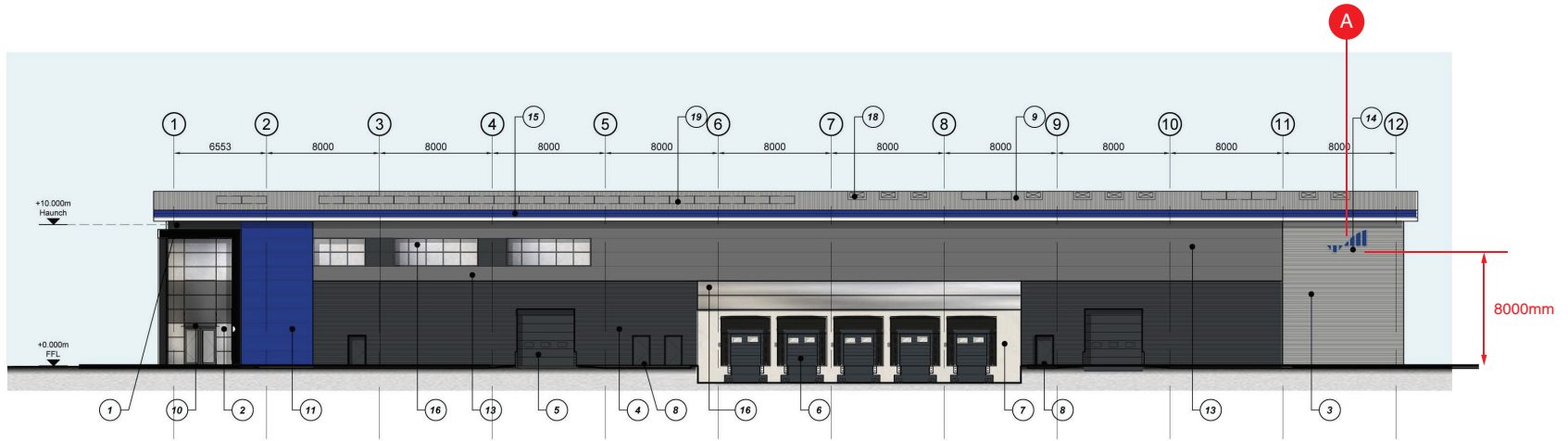


4 Eastboro Fields Hemdale Business Park  
Nuneaton CV11 6GL  
024 7632 0032 info@magnasigns.co.uk

Client: Wilten Construction	Project: Bridge Croydon	Date: 01/11/23	Revision: 3	Job No: 38362
Estimator: Ben Ashdown	Designer: Kaleb Sharrott	Revision Details: Revision 2 Revision 3 Revision 4		
		Signage Colours: <div style="display: flex; justify-content: space-around; align-items: center;"> <div style="border: 1px solid black; padding: 2px;">Pantone Cool Grey 6C</div> <div style="border: 1px solid black; padding: 2px;">Pantone 287 C</div> <div style="border: 1px solid black; padding: 2px;">Pantone Cool Grey 10C</div> <div style="border: 1px solid black; padding: 2px;">RAL 9006</div> </div>		

This artwork and its content is copyright of Magna Signs - © Magna Signs 1991. All rights reserved.

Any redistribution or reproduction of part or all of the contents in any form is prohibited other than the following: You may print or download to a local hard disk extracts for your personal and non-commercial use only. You may copy the content to individual third parties for their personal use, but only if you acknowledge the material. You may not, except with our express written permission, distribute or commercially exploit the content. Nor may you transmit it or store it in any other website or other form of electronic retrieval system.



SOUTH ELEVATION  
SCALE 1:200



WEST ELEVATION  
SCALE 1:200



SITE PLAN

Client: Wilten Construction	Project: Bridge Croydon	Date: 01/11/23	Revision: 3	Job No: 38362
Estimator: Ben Ashdown	Revision Details: Revision 2 Revision 3 Revision 4	Signage Colours:		
Designer: Kaleb Sharrott	This artwork and its content is copyright of Magna Signs - © Magna Signs 1991. All rights reserved.			Page: 4 of 4
<small>Any redistribution or reproduction of part or all of the contents in any form is prohibited other than the following: You may print or download to a local hard disk extracts for your personal and non-commercial use only. You may copy the content to individual third parties for their personal use, but only if you acknowledge the material. You may not, except with our express written permission, distribute or commercially exploit the content. Nor may you transmit it or store it in any other website or other form of electronic retrieval system.</small>				