



ALUMINIUM  
GLAZED DOORS

FULLY GLAZED  
AND FRENCH DOORS

# Stylish glazed door design options

Designed with an outer aluminium frame and with a range of configuration options, our Thermo65 glazed doors can be utilised in a number of ways across renovation, extension or even completely new-build home projects

Manufactured from high performance, thermally broken aluminium frames our Thermo65 glazed doors are designed to last.

The stylish square-edged profile perfectly complements our range of aluminium windows, enabling the doors to be incorporated within larger apertures and creating a consistent overall appearance.

The doors are available with a range of glass options including clear, satin or even patterned glass. The doors can be double or triple glazing and can be specified with laminate glass to provide the ultimate in security protection.



## French doors

A timeless classic, French doors consist of a double set of doors that open in the middle. Whether on their own or paired with a set of sidelights (windows placed either side of the doors) they offer a stylish option for smaller openings.

For larger apertures they can be included as part of our glass curtain walling solution or combined with fixed frame windows to create contemporary glass facades.



## Thermo65 fully glazed doors

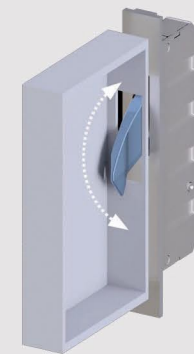
Our hugely versatile fully glazed doors have been utilised for a wide range of purposes across the length and breadth of the country.

From ultra-modern front doors with satin glass installed on contemporary self-builds, to steel-look doors created with Art-Deco style horizontal bars on period urban homes; our single doors are equally at home.

## Thermo65 part panel doors

Often used for a back or side entrance door, our part panel doors are typically designed with a lower aluminium infill panel. Each door is designed with multi-point locking as standard and fabricated in the same contemporary style as the rest of our product range - ensuring a consistent appearance across your home.

Our Thermo65 glazed doors are all fitted with Winkhaus® multipoint Cobra™ lock systems.



The PAS 24 and Secured by Design™ approved Cobra™ lock features a central latch along with twin forged steel and nickel plated hooks towards the top and bottom of the door.

To provide complete peace of mind all of our doors are installed with ISEO™ F6 Extra S key cylinders. The SKG® 3-star rated cylinder carries the prestigious BSI Kitemark™ and features a 6-pin anti-bump, anti-drill, anti-pick and anti-snap cylinder design.





sliding doors



bifold doors



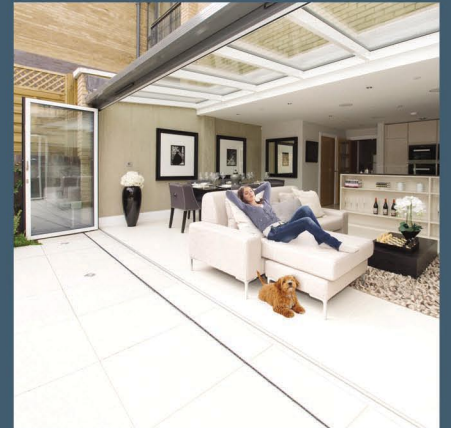
slide & turn doors



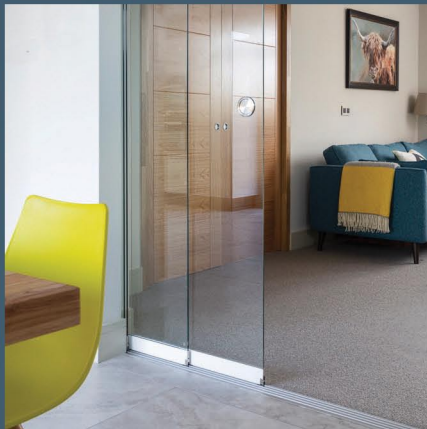
heritage doors



aluminium windows



glass roofs



internal glazing



front doors



glass balustrades

**IDSystems**  
innovative glazing

t 01603 408804 e info@idsystems.co.uk

B2 Rhombus Park Diamond Road Norwich NR6 6NN

[www.idsystems.co.uk/front-doors](http://www.idsystems.co.uk/front-doors)

See our **glazed doors** at  
▶ **Our Comprehensive Showroom in Norwich**

