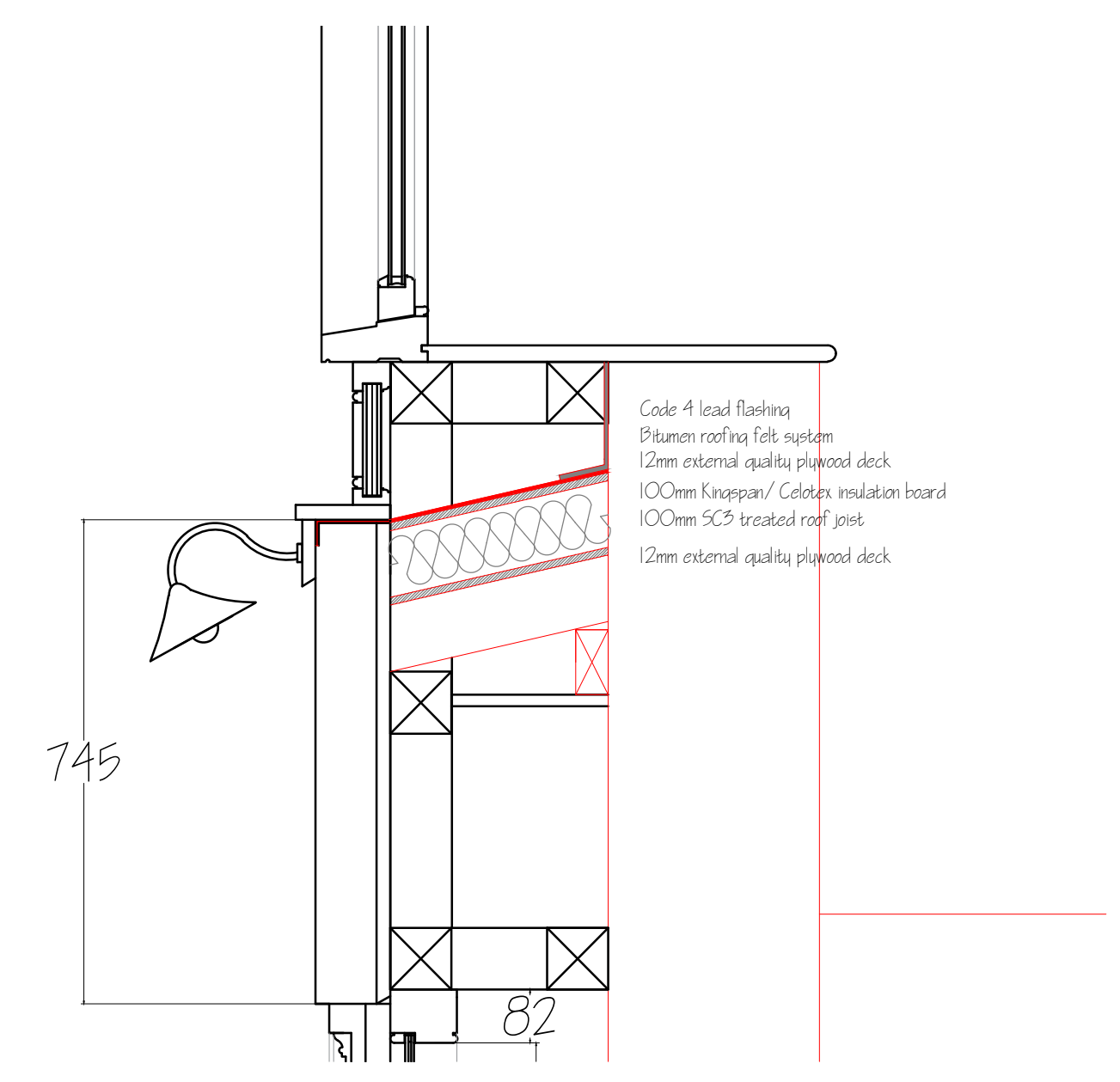
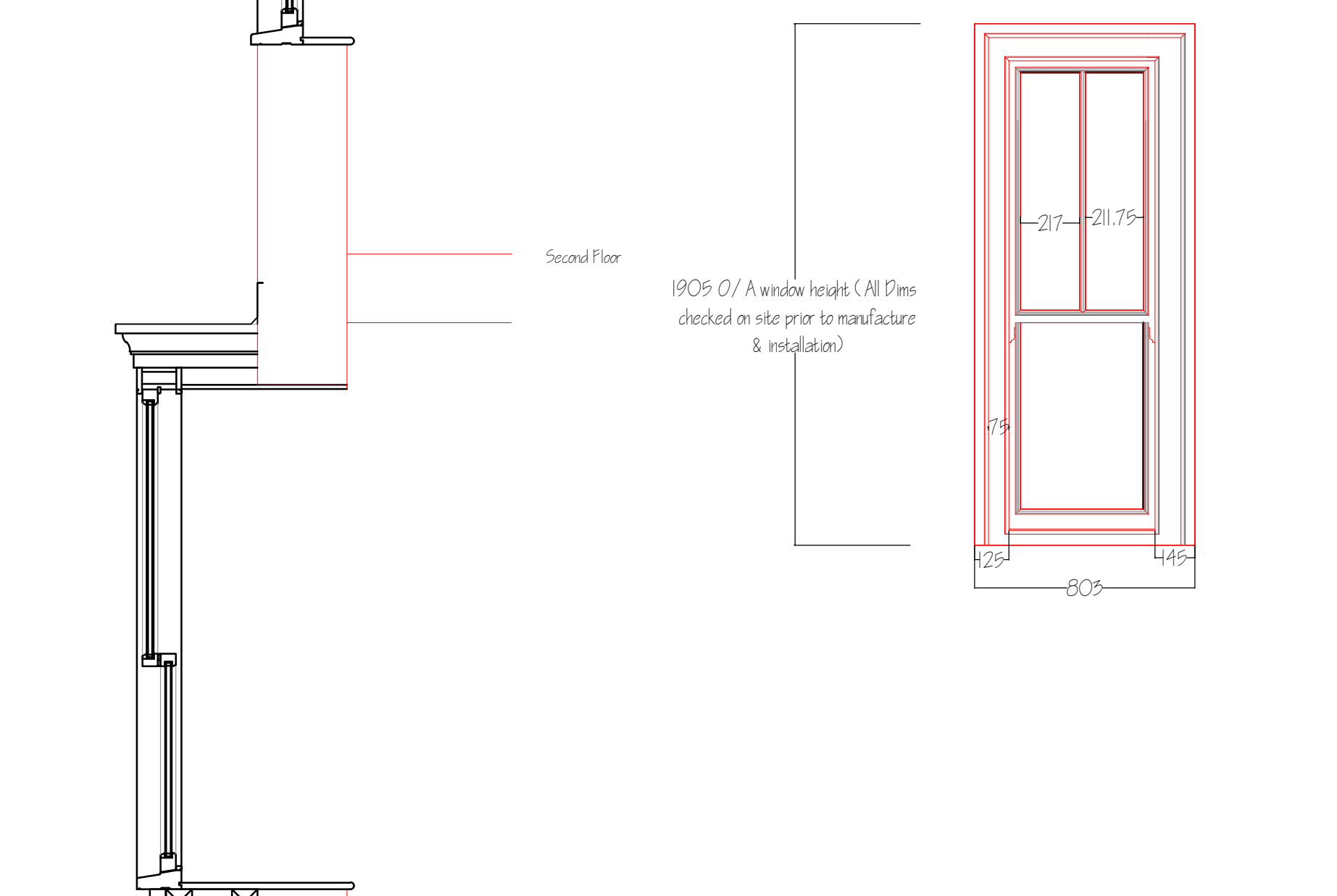


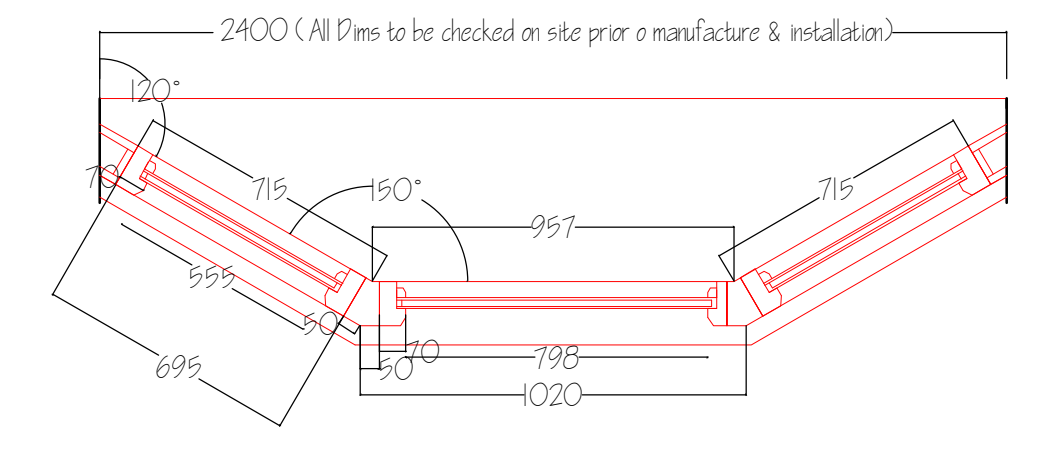
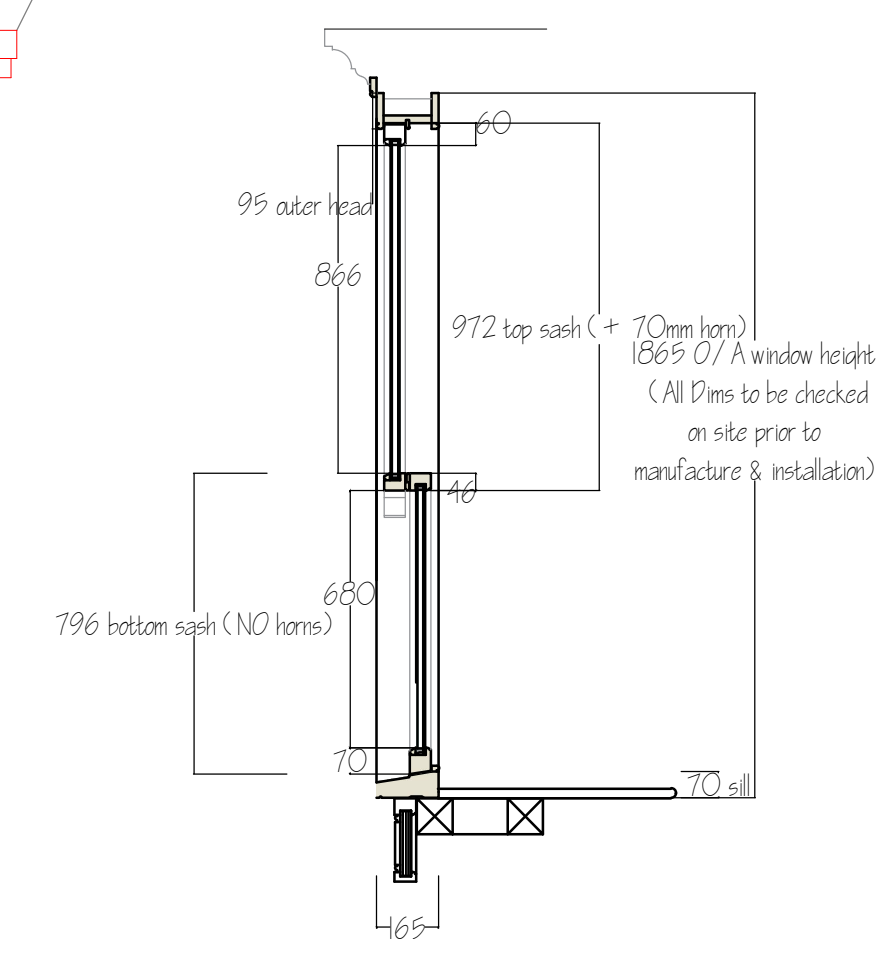
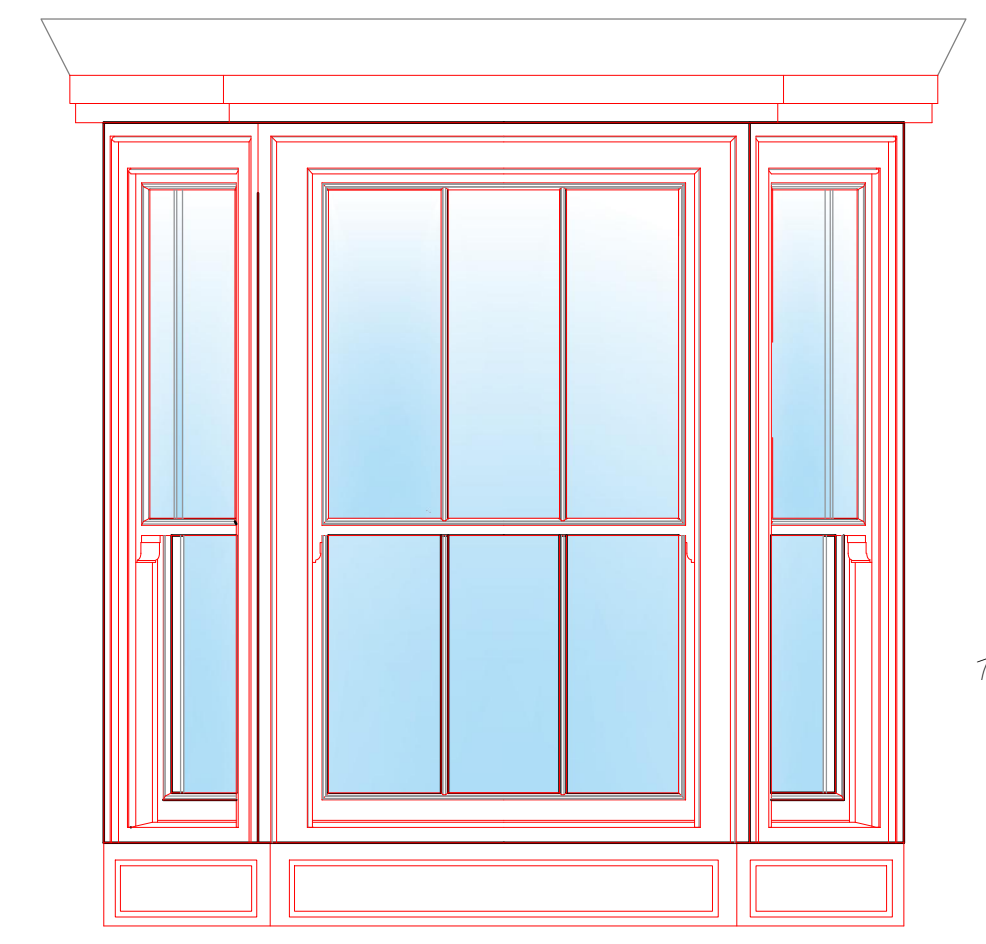
Second floor Window details
1:20



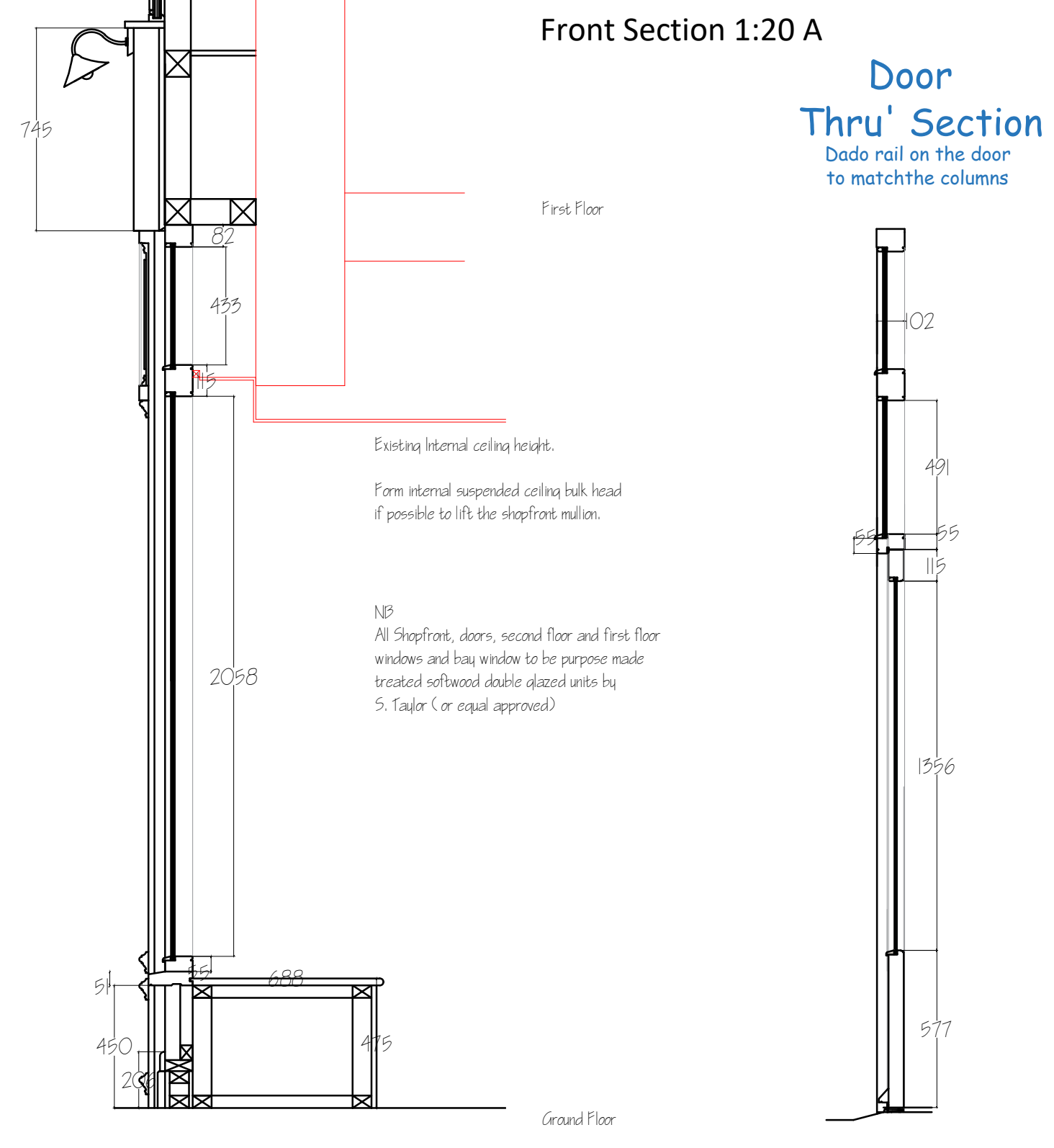
Front lean-to roof details
1:10



- Made in Accoya
- Opening outer sashes
- Fixed centre sashes
- Windowboard groove
- Cover trims sent loose
- New 165 wide box section
- Planitherm Total Low E clear D/G units
- 24mm D/G units - 4/16/4 (argon gas filled)
- Toughened glass
- Edge spacer colour TBC
- Glazing tape colour TBC
- Duplex bars to the top sashes
- Fittings finish TBC
- Angel vent locks
- Sash lifts supplied
- NO trickle vents
- Paint finish as previously manufactured

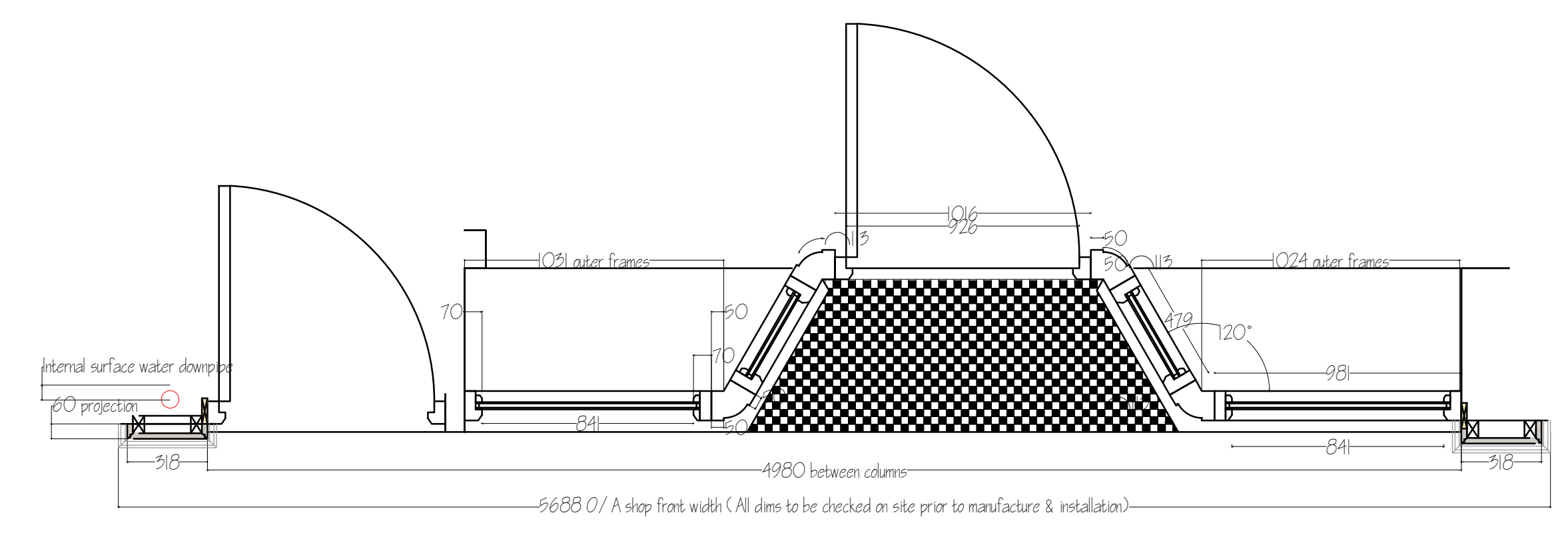


First floor Bay Window details
1:20



Front Section 1:20 A

Door Thru' Section
Dado rail on the door to match the columns



Ground floor Shopfront details
1:20



Project
**PROPOSED HERITAGE REFURBISHMENT
6 HIGH STREET
STOCKTON-ON-TEES
TS18 1UB**

Client
Mr Alfio Dellaquila

Drawing Title
**Proposed
Detail Sections**

Scale
1:20

Drawn by

Date
July 2021

Size
A1

Drg. No.
AA.20.11.15

Rev
-