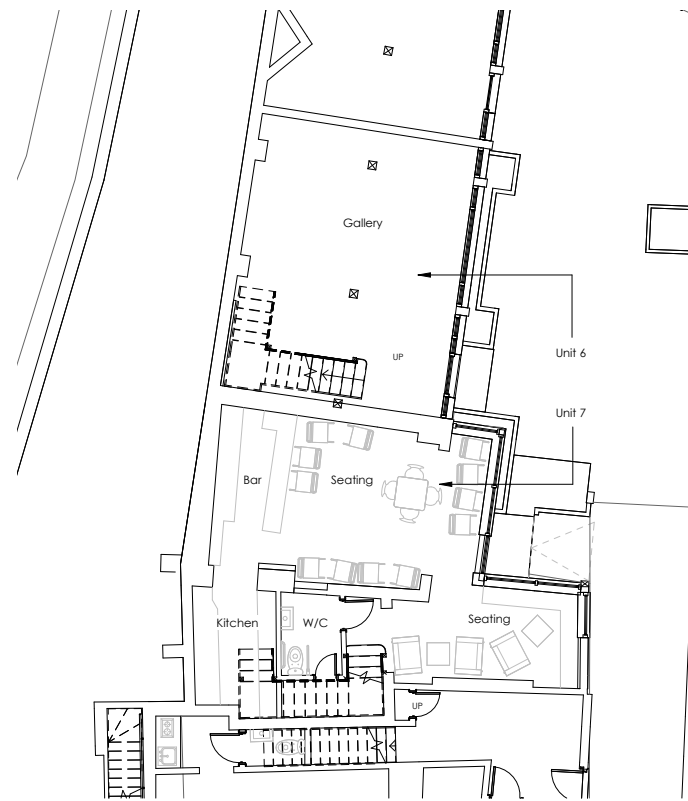


Unit 6 & 7: Existing

Unit 6 - *Fox Yard Studio* currently operates as an art gallery and studio, showcasing local and contemporary art. Totalling 83 square metres across its two storeys, the space provides a unique platform for local artists and aims to enrich the creative community with regular workshops and exhibitions. However, this has been restricted through the gallery's limited opening hours and staff availability.

Unit 7 - *Pallet Bar* functions as an arts bar serving a range of locally sourced drinks and showcasing local artwork. The intimate venue totals 91 square metres across its two storeys and regularly hosts events. However, functionality and access is often restricted by a lack of ground floor seating, which is especially notable during peak hours.



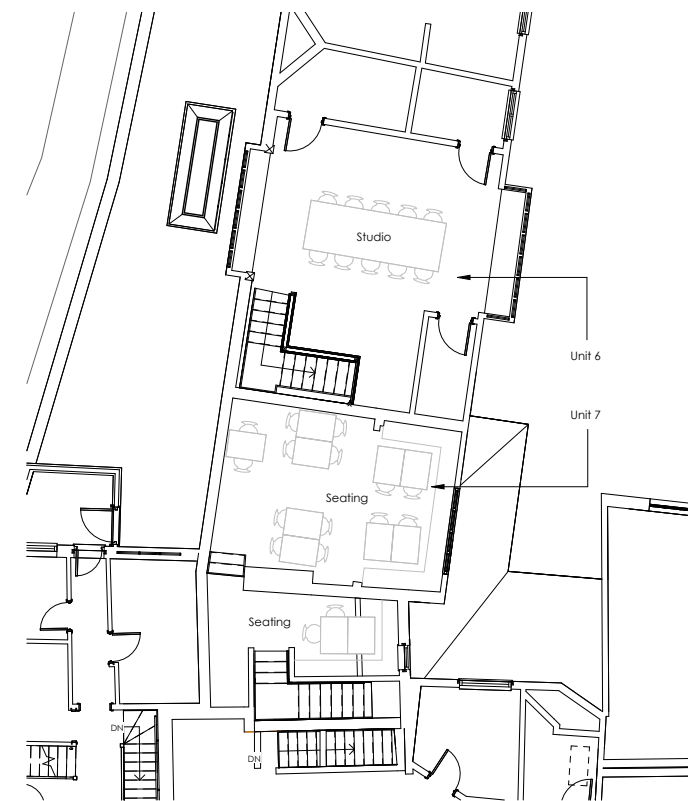
Existing Unit 6 & 7 ground floor plan (not to scale)



Unit 7 ground floor bar



Unit 6 & 7 Location Plan



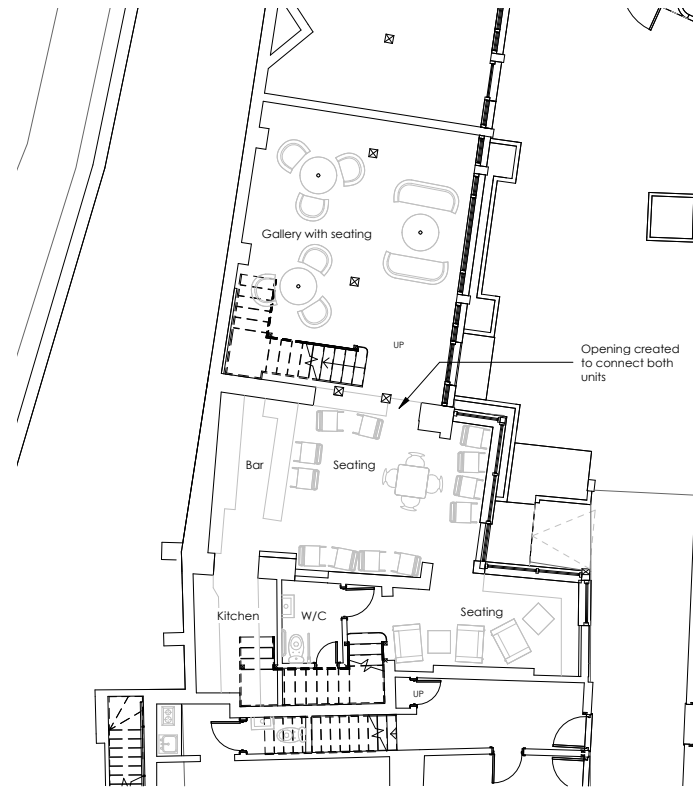
Existing Unit 6 & 7 first floor plan (not to scale)



Unit 6 first floor gallery

Unit 6 & 7: Proposed

The proposal involves connecting Units 6 & 7 by creating a small opening in their existing partition. This alteration aims to enhance the overall functionality of both spaces and encourage collaboration. The connected units will enable the coordination of events that seamlessly integrate the artistic atmosphere of the gallery with the social setting of the arts bar. Staff will be able to efficiently manage both units simultaneously, allowing for an extension of the gallery's current opening hours and more opportunities for the community to engage with ongoing exhibitions. Furthermore, this spatial integration will allow for seating to expand into Unit 6 to address capacity constraints.



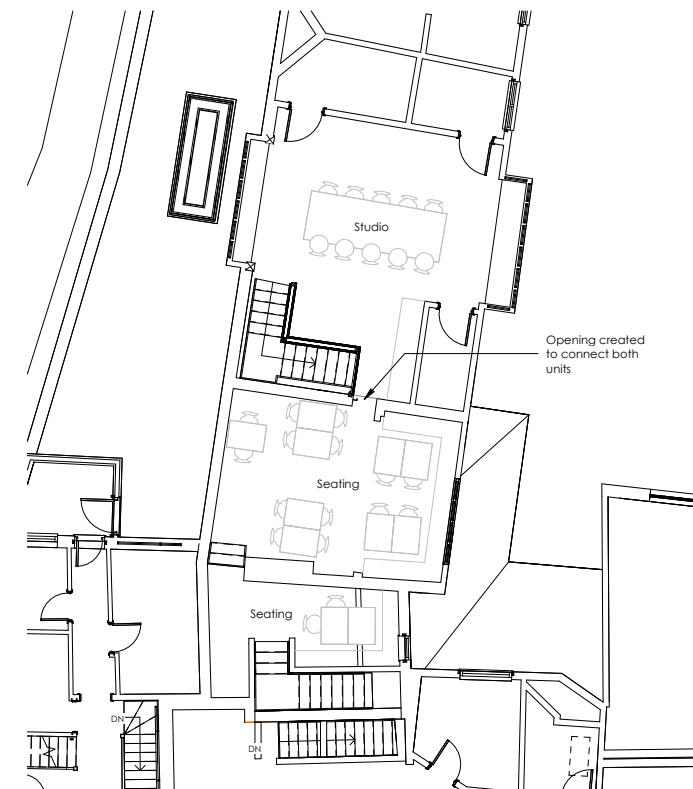
Proposed Unit 6 & 7 ground floor plan (not to scale)



Unit 6 **ground floor opening** located



Unit 7 **ground floor opening** located



Proposed Unit 6 & 7 first floor plan (not to scale)



Unit 6 **first floor opening** located



Unit 7 **first floor opening** located