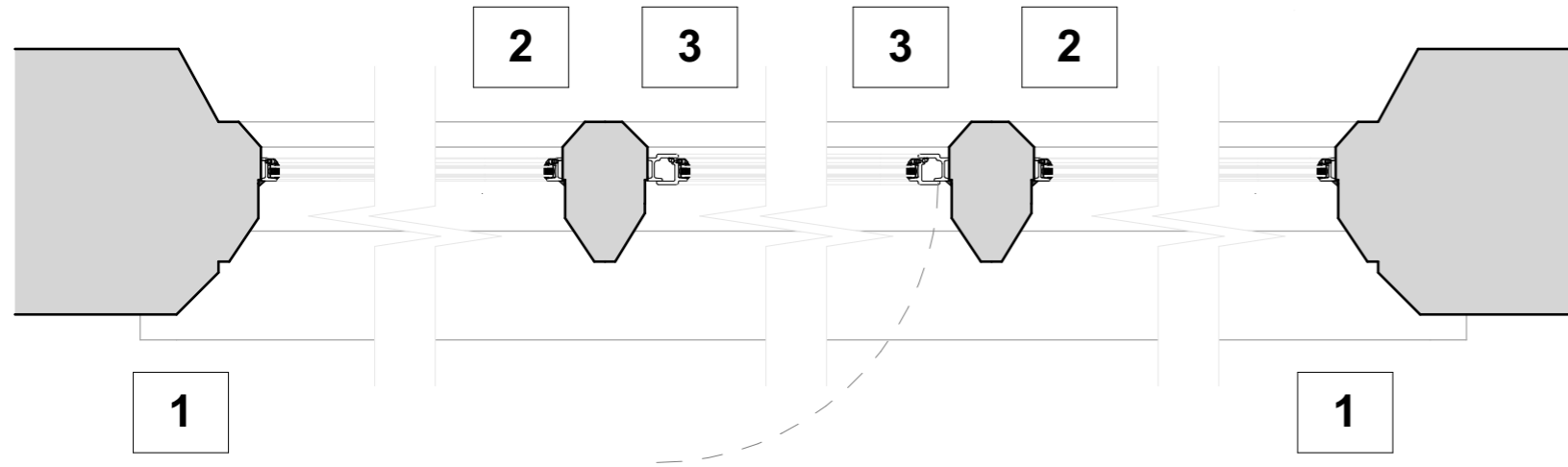


PLAN DETAILS, 1:10



KEY

PLAN DETAILS

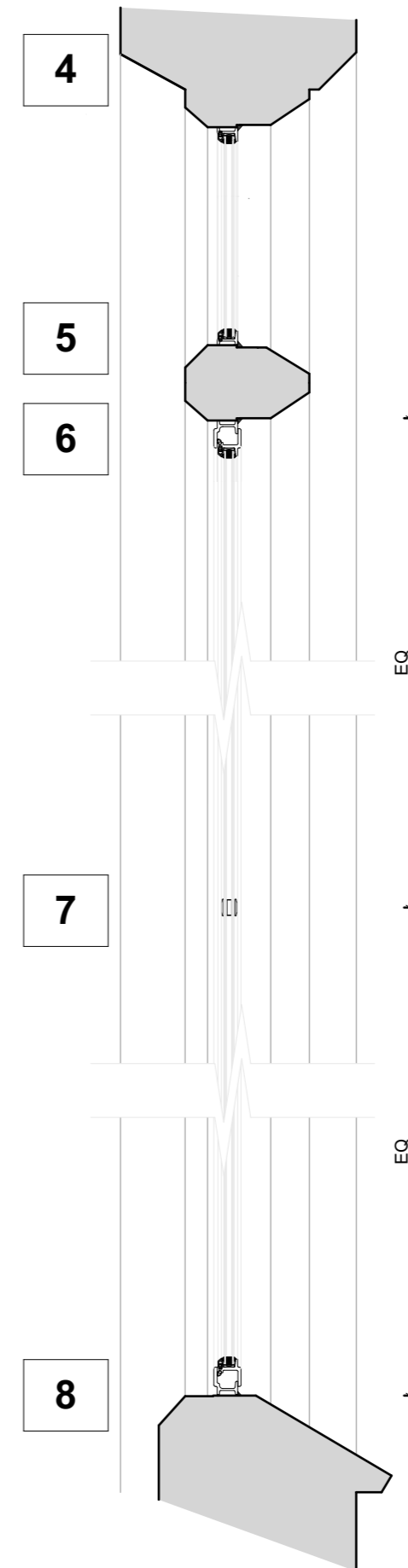
- 1) metal window frame to reveals
- 2) metal window frame (fixed) to stone mullion
- 3) metal window frame (opening casement) to stone mullion

SECTION DETAILS

- 4) metal window frame (fixed) to head reveals
- 5) metal window frame (fixed) to stone transom
- 6) metal window frame (opening casement) to stone transom
- 7) metal window frame glazing bar
- 8) metal window frame (opening casement) to stone cill

NOTE:

- Not for construction, all dimensions limited for planning and listed building consent purposes only.
- Suitable seals to be fitted to threshold, jambs, meeting stiles and door head to be included. Suitability of proprietary seals checked to ensure weather tightness and prevention of drafts and water ingress.



SECTION DETAILS, 1:10

Table of revisions. WIP denotes 'work in progress'

Rev	Ch ID	Description	Date
A	Ch-02	First Issue	22/12/2023

This documents and its design content is copyright ©. It shall be read in conjunction with all other associated project information including models, specifications, schedules and related consultants documents. Do not scale from documents unless for planning purposes. All dimensions to be checked on site. Immediately report any discrepancies, error or omissions on this document to the Originator. If in doubt ASK. Limitations on the use of information in this drawing is described in our terms of appointment.

hmad architects
 The Nook | Simmonds Place
 Saunders Way | Cullompton
 EX15 1BS
 01392 459777
 mail@hmad.co.uk

Project:
 The Old Vicarage, Woodbury Salterton. EX5 1PG
 for D Wright & M Wright

Drawing title:
Windows Details - proposed metal windows

Drawing number: **2342 3213** Revision: **A**

For use up to and not beyond RIBA stage:

3 Spatial Co-ordination

Drawing scale(s)	originator	checked
1:10 @ A3	mr	mr