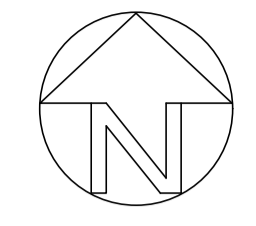


STAGE 3

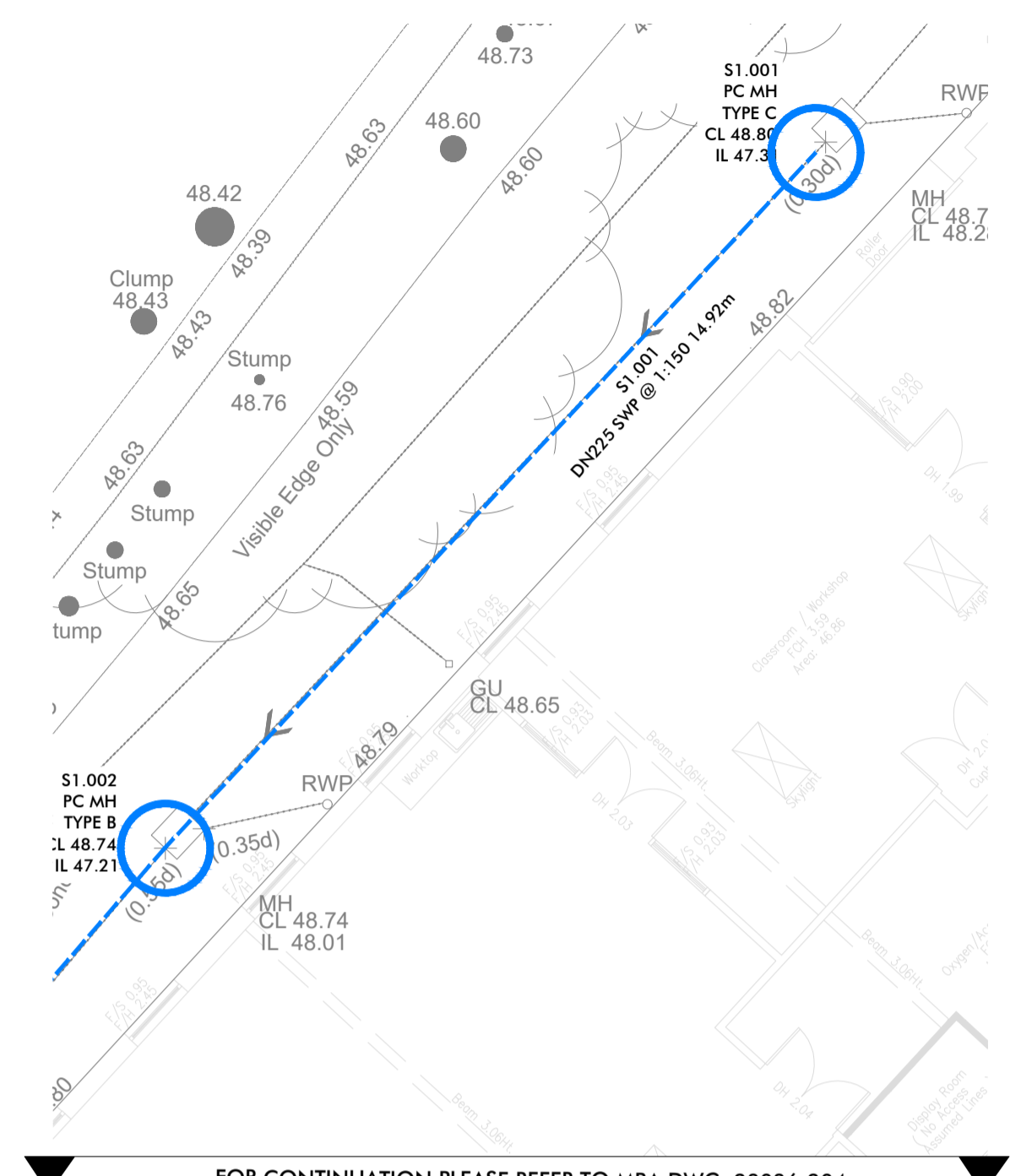


NOTES

- THIS DRAWING IS NOT TO BE USED FOR CONSTRUCTION UNLESS MARKED ABOVE "FOR CONSTRUCTION"
 - THE COPYRIGHT ON THIS DRAWING IS RETAINED BY MICHAEL BEARDSALL ASSOCIATES LTD
 - THIS DRAWING IS TO BE READ IN CONJUNCTION WITH ALL RELEVANT ARCHITECTS AND ENGINEERS DRAWINGS AND SPECIFICATIONS
 - THE CONTRACTOR IS RESPONSIBLE FOR ALL DIMENSIONS AND THE CORRECT SETTING OUT ON SITE. ONLY FIGURED DIMENSIONS ARE TO BE USED
DO NOT SCALE FOR CONSTRUCTION PURPOSES: IF IN DOUBT ASK DIMENSIONS **SHOULD NOT** BE TAKEN ELECTRONICALLY
 - ALL MATERIALS AND WORKMANSHIP TO COMPLY WITH THE CURRENT BRITISH STANDARDS AND CODES OF PRACTICE
- PRIVATE DRAINAGE**
- BUILDING DRAINAGE TO BUILDING REGULATIONS PART H.
 - ALL BUILDING DRAINAGE NOT IN ROAD TO BE DN100 PLASTIC UNLESS OTHERWISE NOTED.
 - ALL BUILDING DRAINAGE IN ROAD TO BE DN150 STRUCTURED WALL PLASTIC UNLESS OTHERWISE NOTED.
 - ALL BUILDING FOUL DRAINAGE AT GRADIENTS NOT FLATTER THAN 1:40 UNLESS OTHERWISE NOTED.
 - ALL BUILDING SURFACE WATER DRAINAGE AT GRADIENTS NOT FLATTER THAN 1:100.
 - UNDER GARDENS WITH 0.6m COVER OR MORE CLASS P FULL DEPTH GRANULAR SUPPORT, SINGLE SIZE MATERIAL ONLY (CLAUSE 663).
 - UNDER GARDENS WITH LESS THAN 0.6m COVER CLASS O GRANULAR SURROUND WITH PROTECTION (CLAUSE 665).
 - UNDER SOLID GROUND FLOORS 0.3m OR MORE FROM UNDERSIDE OF SLAB CLASS Y CONCRETE SURROUND, SINGLE SIZE MATERIAL ONLY (CLAUSE 673).
 - UNDER SOLID GROUND FLOORS 0.3m OR LESS FROM UNDERSIDE OF SLAB CLASS W GRANULAR SURROUND, SINGLE SIZE MATERIAL ONLY (CLAUSE 676).
 - PIPE RUNS NEAR FOUNDATIONS CLASS Z CONCRETE SURROUND (CLAUSES 678)
 - UNDER ROADS AND CONSTRUCTED UNDER STEPS CLASS O FULL DEPTH GRANULAR SUPPORT, SINGLE SIZE MATERIAL ONLY (CLAUSE 661).
 - FOR PREFORMED POLYPROPYLENE MANHOLES AND BRANCHES, MAIN CHANNEL TO BE USED FOR MAIN FLOW. ALL SPARE INLETS (SLIPPERS) TO BE PROPERLY CAPPED OFF.
 - WHERE REQUIRED BENDS ON BUILDING DRAINAGE RUNS MUST BE LOCATED IMMEDIATELY OUTSIDE CHAMBERS AND ACCESS POINTS.

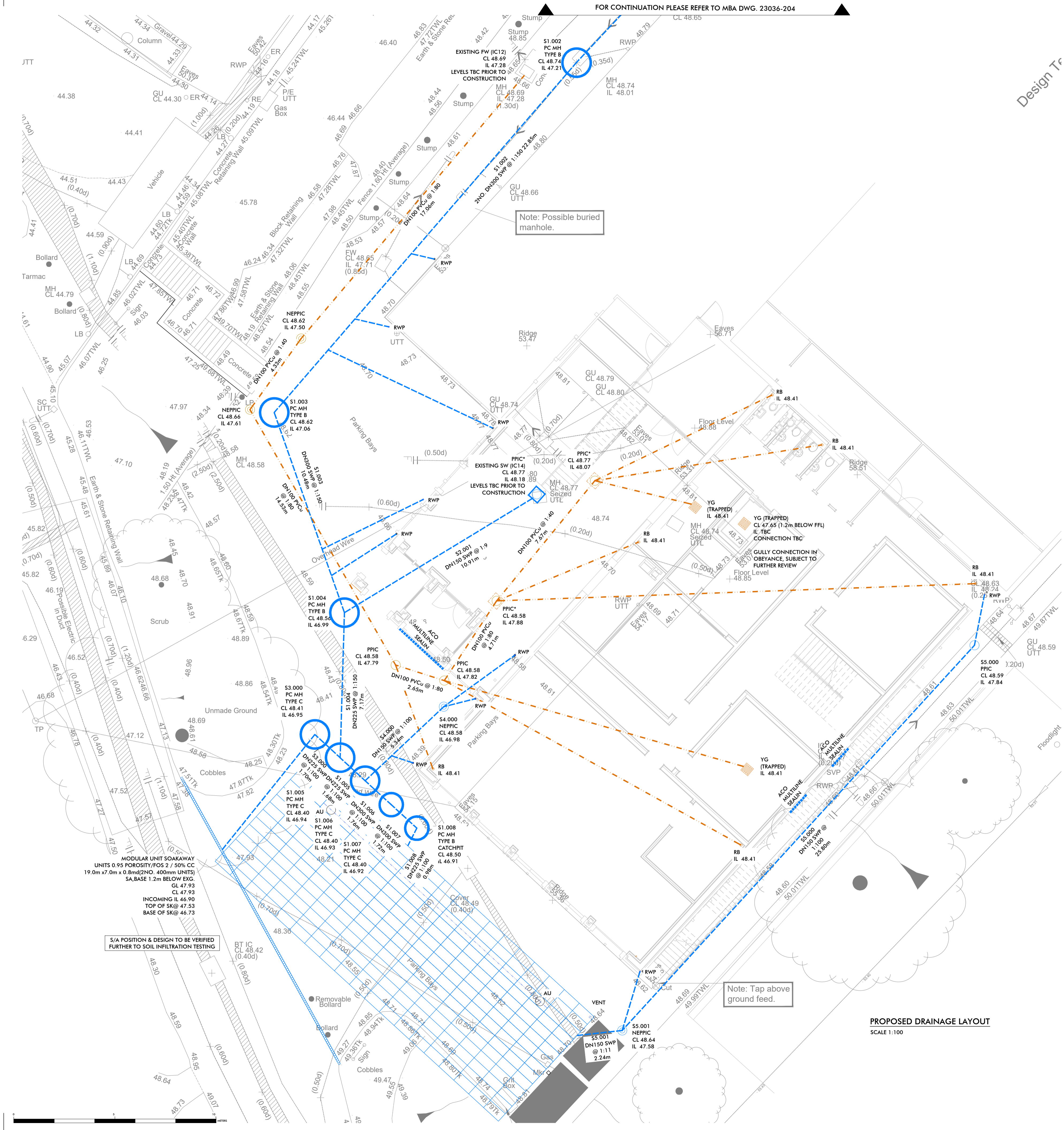


Design Tr



FOR CONTINUATION PLEASE REFER TO MBA DWG. 23036-204

DRAINAGE KEY	
150/225/300mm	SURFACE WATER DRAIN, R12/344/346
100mm	FOUL WATER DRAIN, R12/346
PPIC SW	POLYPROPYLENE INSPECTION CHAMBER (PPIC) 4600 DETAIL ON MBA DWG. 23036-210 R12/401
NEPPIC SW	NON-ENTRY POLYPROPYLENE INSPECTION CHAMBER (NEPPIC) 4600 DETAIL ON MBA DWG. 23036-210 R12/402
RWP	REST BEND (RAINWATER PIPE) DETAIL ON MBA DWG. 23036-210 R12/691
SVP	REST BEND (SOIL AND VENT PIPE) DETAIL ON MBA DWG. 23036-210 R12/691
VENT	
AU	MODULAR WATER STORAGE UNIT/INSPECT UNIT. PLEASE REFER TO DRAWING 19187-211 FOR SOAKAWAY INDIVIDUAL SPECIFICATIONS, R12/464
INSPECT UNITS	
ACO	ACO CHANNEL DRAIN, ACO MULTILINE SEALIN V1005 SYSTEM
PPIC* SW	POLYPROPYLENE INSPECTION CHAMBER (PPIC) 4600 WITH DOUBLE SEALED RECESSED COVERS TO ACCEPT FINISHES DETAIL ON MBA DWG. 23036-210, R12 402&471
YG (TRAPPED)	PRIVATE YARD GULLY DETAIL ON MBA DWG. 23036-210 - R12/313 & 472
TYPE C	SURFACE WATER DN150 PC MANHOLE SEE DETAIL ON MBA DWG. 23036-211, R12-407
TYPE B	SURFACE WATER DN130 PC MANHOLE CATCHPIT MANHOLE (3500), DETAILS ON MBA DRAWING 23036-211, R-407



Note: Possible buried manhole.

Note: Tap above ground feed.

PROPOSED DRAINAGE LAYOUT
SCALE 1:100

DATE	REVISION SUMMARY	BY	CHK
C 24.11.23	SVP POSITIONS REVISED	MFS	MP
B 21.11.23	GULLY POSITIONS REVISED UPDATED FOR NEW ARCHITECTS LAYOUT	MFS	MP
A 22.08.23	SCALE REVISED STAGE 2 ISSUE	MFS	MP

JOB TITLE:	
TRURO SCHOOL TRENNEICK LANE TRURO CORNWALL	
CLIENT:	
TRURO SCHOOL	
DETAIL:	
PROPOSED DRAINAGE LAYOUT OPTION 3	
DRN. BY: E.GASKELL	
DATE: AUG 2023	SCALE: 1:100 @ A1
JOB NO: 23036	DRAWING No: 204
	REV: C

MBA
CONSULTING
Boscawen House · Chapel Hill · Truro · Cornwall
TR1 3BN
Tel. 01872 260962 Fax. 01872 260963

S/A POSITION & DESIGN TO BE VERIFIED FURTHER TO SOIL INFILTRATION TESTING

MODULAR UNIT SOAKAWAY
UNITS 0.95 POROSITY/FOS 2 / 50% CC
19.0m x 7.0m x 0.8m (2NO. 400mm UNITS)
SA, BASE 1.2m BELOW S/GS
CL 47.93
CL 47.93
INCOMING IL 46.90
TOP OF SKG 47.53
BASE OF SKG 46.73