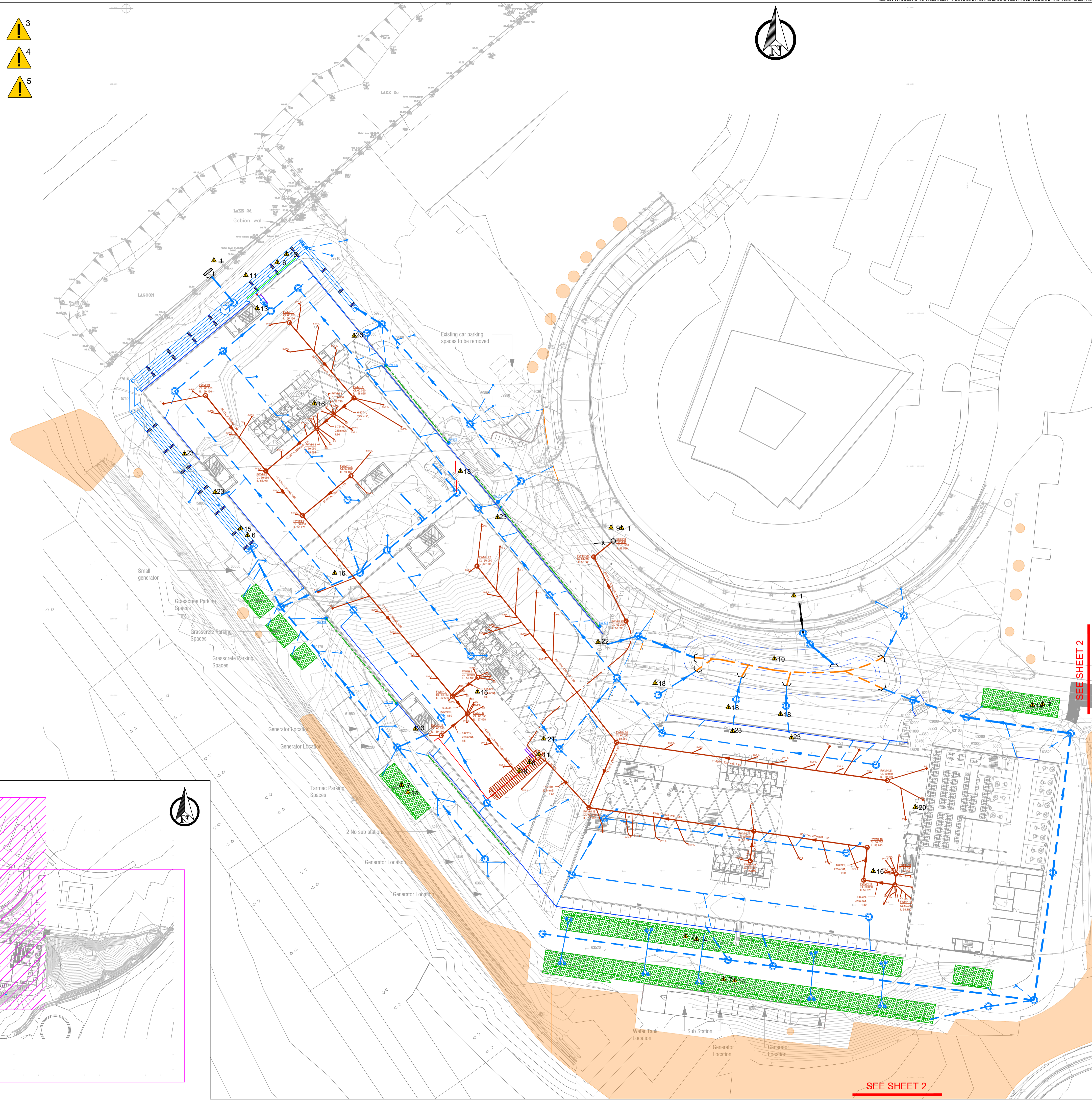
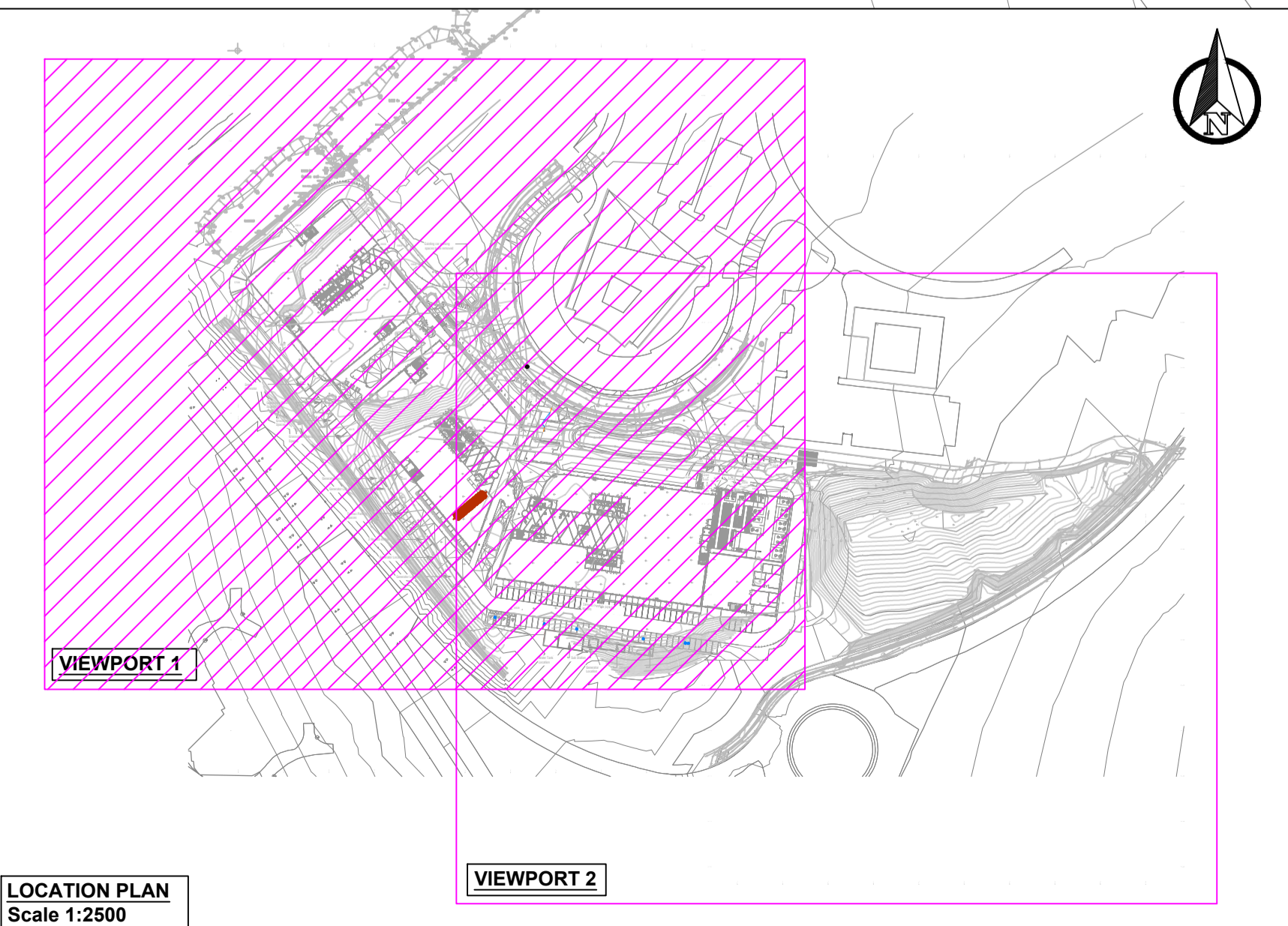


KEY	
	Surface water pipe
	Surface water rising main
	Foul water pipe
	Foul water rising main
	Perforated Pipe
	Grass road permeable car park link pipe
	Land drainage
	Low flow channel
	Aco kerb drain
	Linear drainage channel
	Surface water MH
	Surface water gully
	Foul Water MH
	Grass road permeable parking system (Golpia with grass infill)
	Vent pipe (indicative routing TBC by M&E)
	Electrical Duct (indicative routing TBC by M&E)
	Site Boundary
	Root Protection Zone (RPZ)

- 3
- 4
- 5



- Notes**
- Do not scale from this drawing on print or electronically. Work from figured dimensions only.
 - No deviation from the details on this drawing is allowed without CampbellReith's prior permission in writing.
 - Read this drawing with all Architect's, Service Engineer's and CampbellReith's relevant details, specifications and drawings.
 - All work is to be done in accordance with the relevant specifications issued by CampbellReith, British Standard Codes of Practice, Statutory Requirements and the Contract Documents.
 - Drawing status:**
P: Preliminary Evolving drawings for approvals, tenders, billings etc.
C: Construction Fully developed drawings issued under instructions for construction.
 - Only status C drawings to be used for construction.
 - Suitability code:
Work in progress
S0 - Work in progress
Shared (Non-contractual)
S1 - For coordination, **S2** - For information, **S3** - For internal review and comment, **S4** - For construction approval.
Documentation (For contractors purposes)
D1 - For Costing, **D2** - For Tender, **D3** - For contractor design, **D4** - for manufacture/procurement.
Construction
A - For construction, **B** - For construction but with comments (i.e. areas in abeyance), **CR** - Construction Record (Final Construction ONLY). Any deviations to that which is on site is not the liability of CampbellReith

- Utilities:**
The positions of Statutory Undertakers mains & services shown on this drawing have been based on information extracted from records obtained from various Utilities Companies. These must be regarded as approximate only. The accuracy or completeness of the information or the location of such apparatus as shown on this drawing is not guaranteed and no warranty is given or implied regarding the position, depth, size, gradient thereof. The Contractor must make his own enquiries of the Utilities Companies and Public Authorities and satisfy himself as to the exact position of services and depth, sizes, gradient thereof. In the interests of safety, the approximate position of underground cables should be obtained by use of electronic cable locators and this position confirmed by careful trial-holing using hand-dug methods.
- All details in this drawing shall be read in conjunction with Building Regulations 2015 Approved Document H.
- External rainwater pipes are to be roddable above ground. All SVPs to have rodding plates at ground floor level.
- At least one soil pipe at the head of each run shall vent to the atmosphere.
- All control stations and dimensions shall be checked and verified prior to commencement of works and any other discrepancies shall be reported to the engineer.
- Proposed Masterplan based on 20034-SBR-ZZ-ZZ-SK-A-03100 (Received from Scott Brownrigg on 28/11/23). This Masterplan has been inserted onto the topographical survey and no guarantee as to the accuracy of the layout in relation to the survey is given or implied. Masterplan shown for information only.
- All existing survey information shown or referred to is based upon topographical survey prepared by Sumo Services Ltd, Dwg Ref SUMO-08198-1, dated August 2022 as supplied to CampbellReith - no warranty as to the accuracy of the information is given or implied.
- Refer to Civil Engineering Design Risks ref. 13886-CRH-XX-XX-HS-C-0001 for reference.

P2	Drainage Updated	05/12/23	ZA
P1	Issued for information	22/02/23	IC
Rev	Description	Date	By

CampbellReith
consulting engineers

London 020 7340 1700 Manchester 0161 819 3060
 Surrey 01737 784 500 Birmingham 01675 467 484
 Bristol 0117 916 1066 Dubai 00 971 4345 7088
 www.campbellreith.com

Job Title
Plots 23-26, Oxford Science Park

Client
The Oxford Science Park

**RPZ Overlaid on
Drainage Layout
Sheet 1 of 2**

Drawn by	Date made	Scale @ A1	Checked by	Suitability	CR Project
IC	22/02/23	1:500	LM	S2	13886

Project No.	Originator	Volume	Lvl/Loc	Type	Role	Number	Rev
13886	CRH	ZZ	XX	DR	C	5400	P2