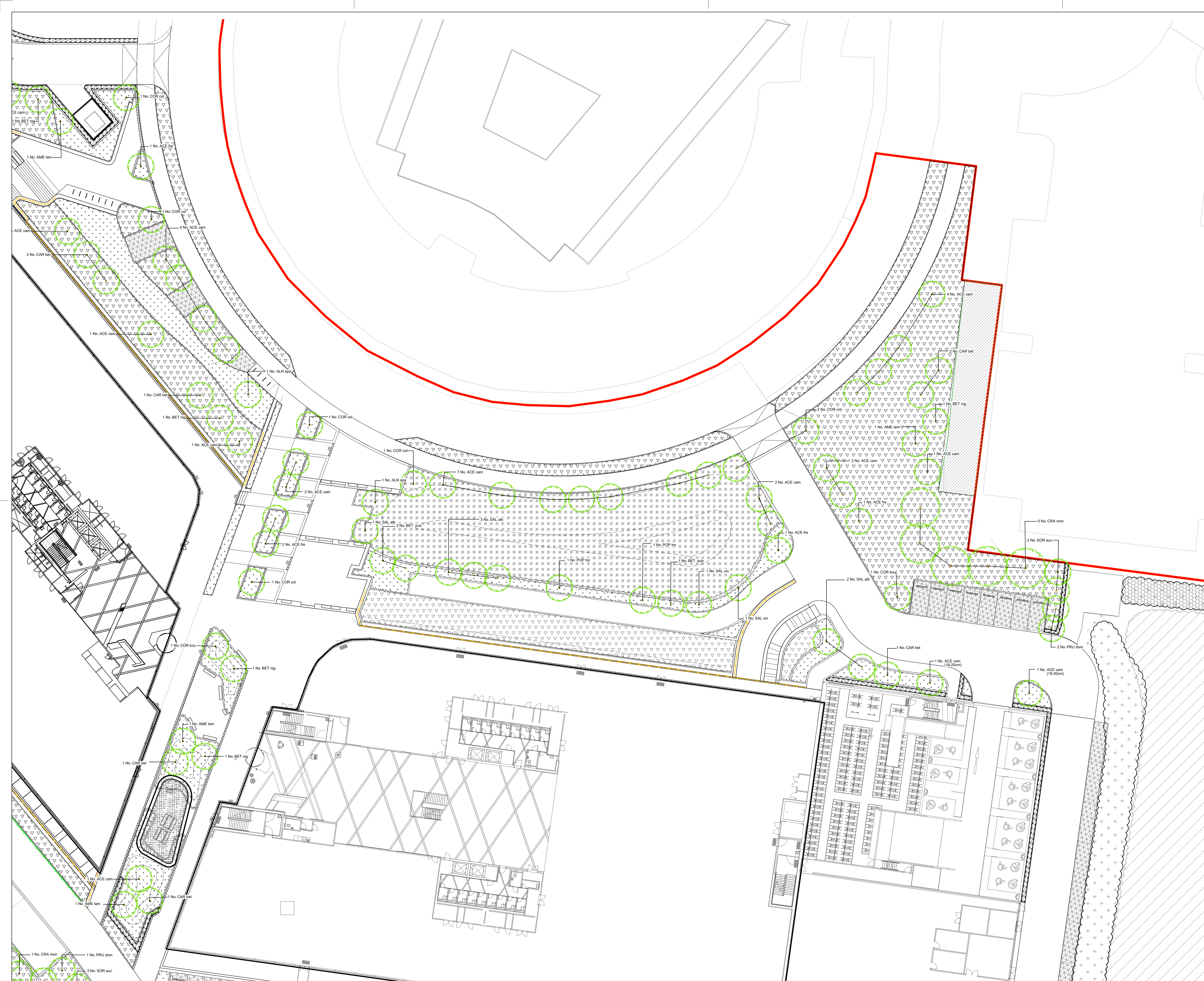


**LEGEND**

- SITE BOUNDARY
- EXISTING WOODLAND
- EXISTING VEGETATION TO BE RETAINED
- PROPOSED TREES
- PROPOSED WOODLAND MIX A TO HAUL ROAD
- PROPOSED WOODLAND MIX B
- PROPOSED NATIVE HEDGE MIX
- SUDS MEADOW MIX PLANTING PRODUCT: PICTORIAL MEADOWS PS04 - WATERS EDGE MIX
- SPECIES-RICH FLOWERING PERENNIALS MIX
- SPECIES-RICH MEADOW MIX PLANTING PRODUCT: PICTORIAL MEADOWS EDGE PS05 - NATIVE MEADOW MIX
- MEADOW WALL SYSTEM PRODUCT: BAUDER, SEEDED EXTENSIVE
- WOODLAND FLOOR MEADOW MIX PRODUCT: PICTORIAL MEADOWS PS03 - WOODLAND EDGE
- SPECIES-RICH LAWN MIX PRODUCT: EMORSGATE SEEDS EL1 - FLOWERING LAWN MIXTURE
- GREEN ROOF

**NOTES:**  
 1. TO BE READ IN CONJUNCTION WITH  
 3241.MA.2006 PLANT SCHEDULE AND  
 3241.MA.2000 PLANTING PLAN, SITE-WIDE



C	22.11.23	KM	PLANNING UPDATES
B	17.11.23	KM	PLANNING UPDATES
A	12.12.22	FY	PLANNING UPDATES
Rev	Date	By	Notes

**OXFORD SCIENCE PARK**  
 OXFORD SCIENCE PARK  
 PLOTS 23-26  
**LANDSCAPE PLANTING PLAN**  
**SHEET 3 OF 5**  
 FOR PLANNING  
 3241.MA.2003  
 12.12.22  
 SEPTEMBER 2022  
 Scale: 1:250@A1  
 Checked: PCD

**MACFARLANE+ASSOC**  
 DESIGN & ENVIRONMENTAL LAND PLANNING

9 HAYWOOD STREET LONDON SE1 2EL T: 020 7960 2540 F: 020 7960 2541  
 E: enquiries@macfarlaneassoc.com W: www.macfarlaneassoc.com