

REVISION:	DATE:	BY:
G	06.05.20	
F	30.05.20	
E	06.05.20	
D	04.05.22	
C		
B		
A		

ISSUED FOR PLANNING  
ISSUED FOR PLANNING  
ISSUED FOR PLANNING  
ISSUED FOR PLANNING

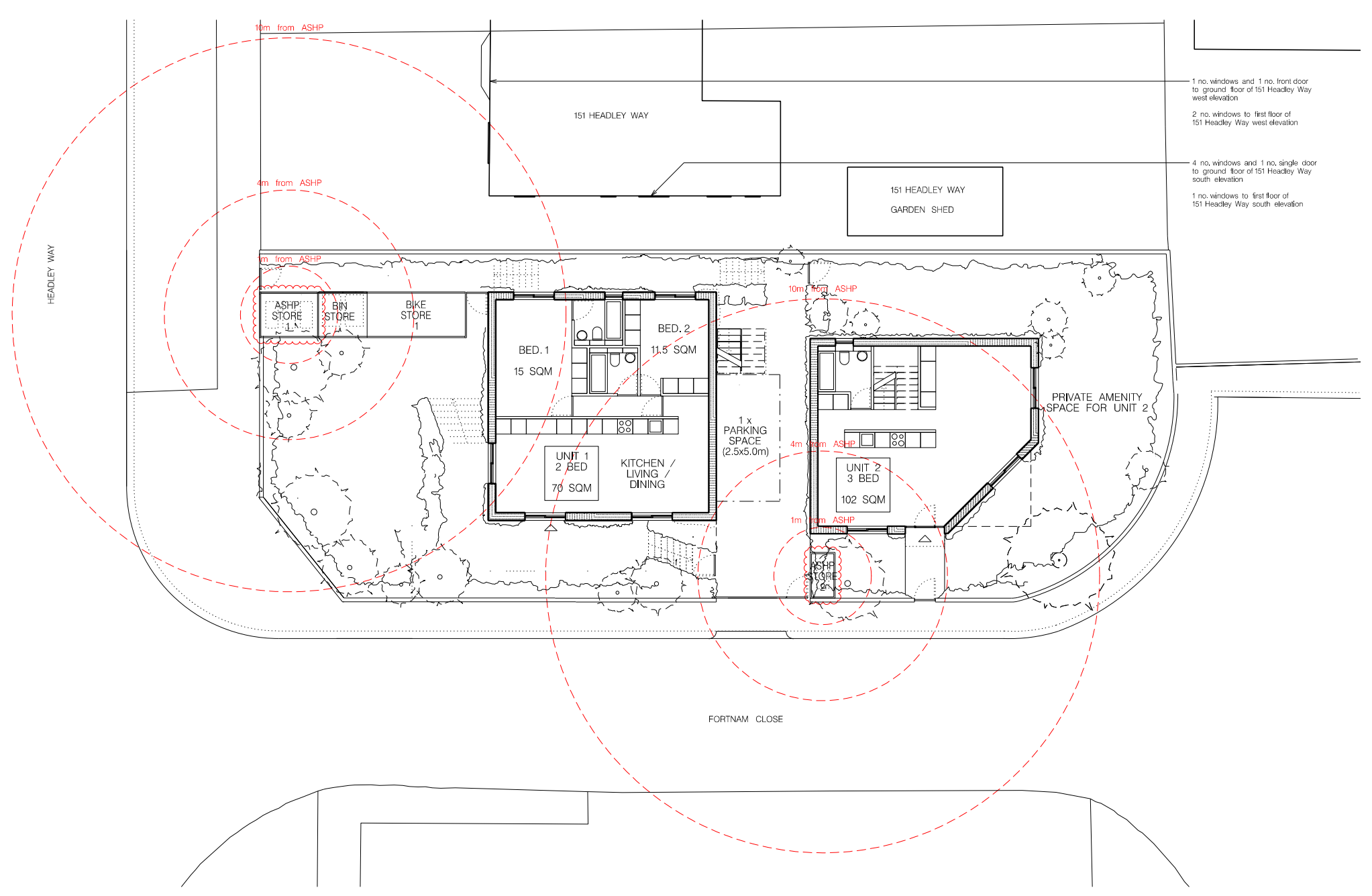
GROUPWORK  
15A CLEMENCELL CLOSE LONDON E14 6AA

PREVIGOR DEVELOPMENT  
LIMITED

PROJECT:  
153 HEADLEY WAY,  
OXFORD, OX3 7SS

PROPOSED PLANS

SCALE:  
@ AT 1:100  
@ AS 1:200

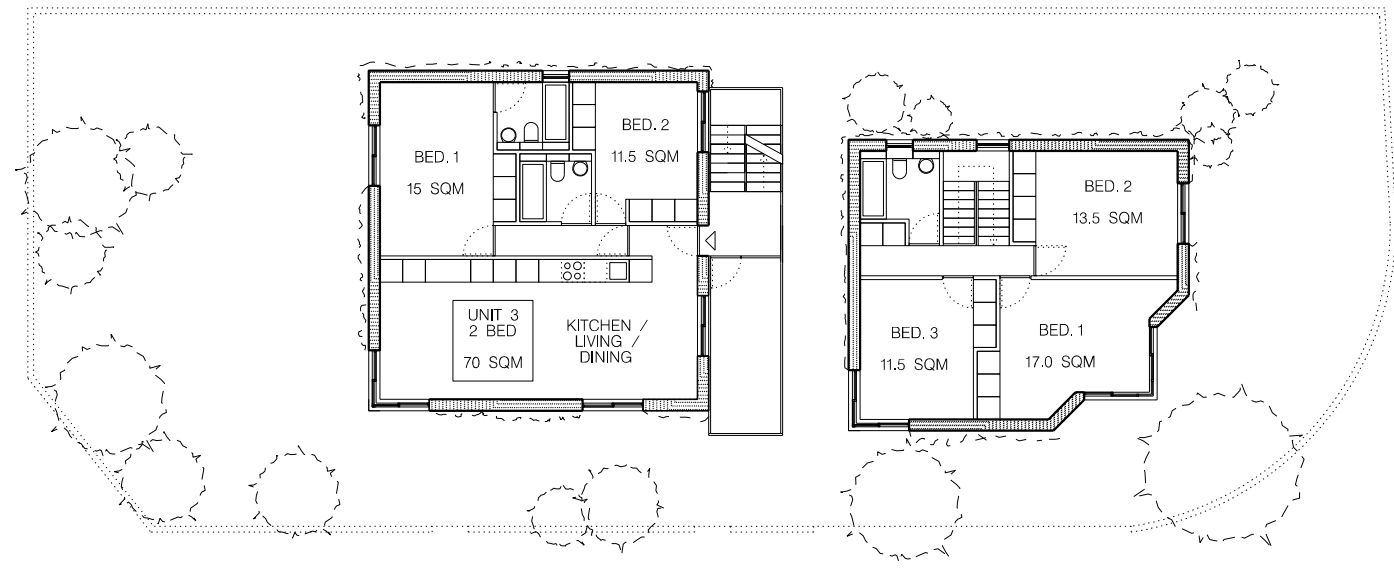


- 1 no. windows and 1 no. front door to ground floor of 151 Headley Way west elevation
- 2 no. windows to first floor of 151 Headley Way west elevation
- 4 no. windows and 1 no. single door to ground floor of 151 Headley Way south elevation
- 1 no. windows to first floor of 151 Headley Way south elevation

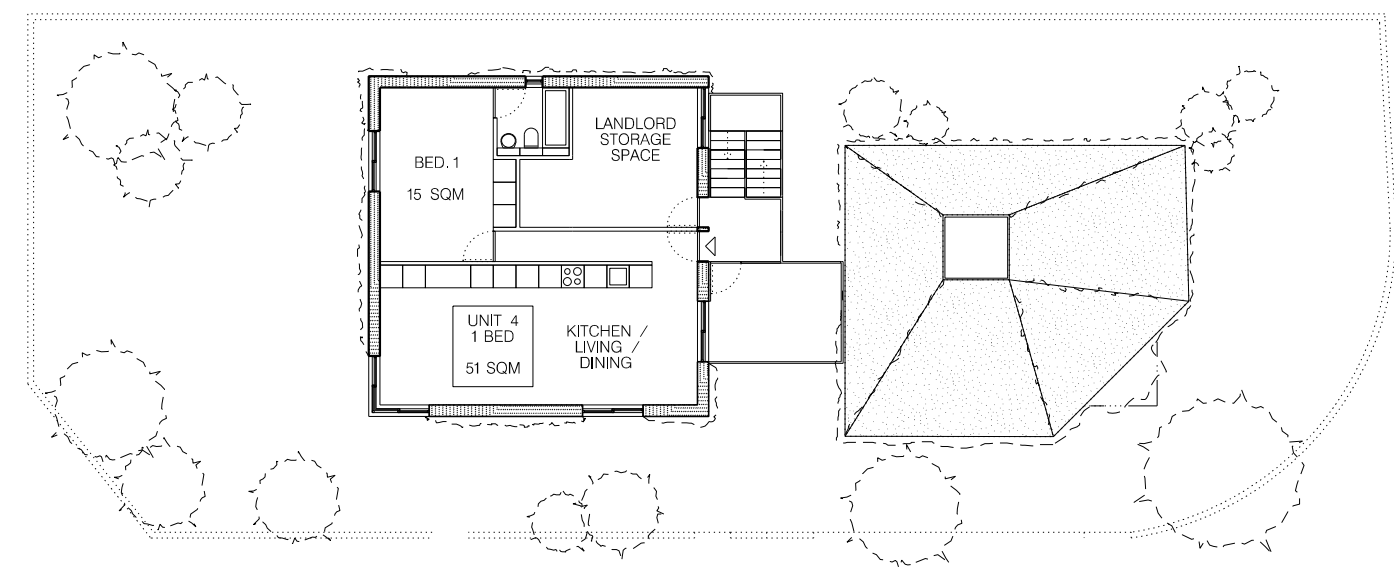
① PROPOSED GROUND /LOWER GROUND FLOOR PLAN

NOTE

ASHP Store 1	ASHP Store 2
Location of 3 no. Air Source Heat Pumps for flats, within external acoustic enclosure if required.	Location of 1 no. Air Source Heat Pumps for house, within external acoustic enclosure if required.
Within planning approved design -1902777FJUL	Within planning approved design -1902777FJUL



② PROPOSED FIRST /UPPER GROUND FLOOR PLAN



③ PROPOSED ROOF /UPPER FIRST FLOOR PLAN

