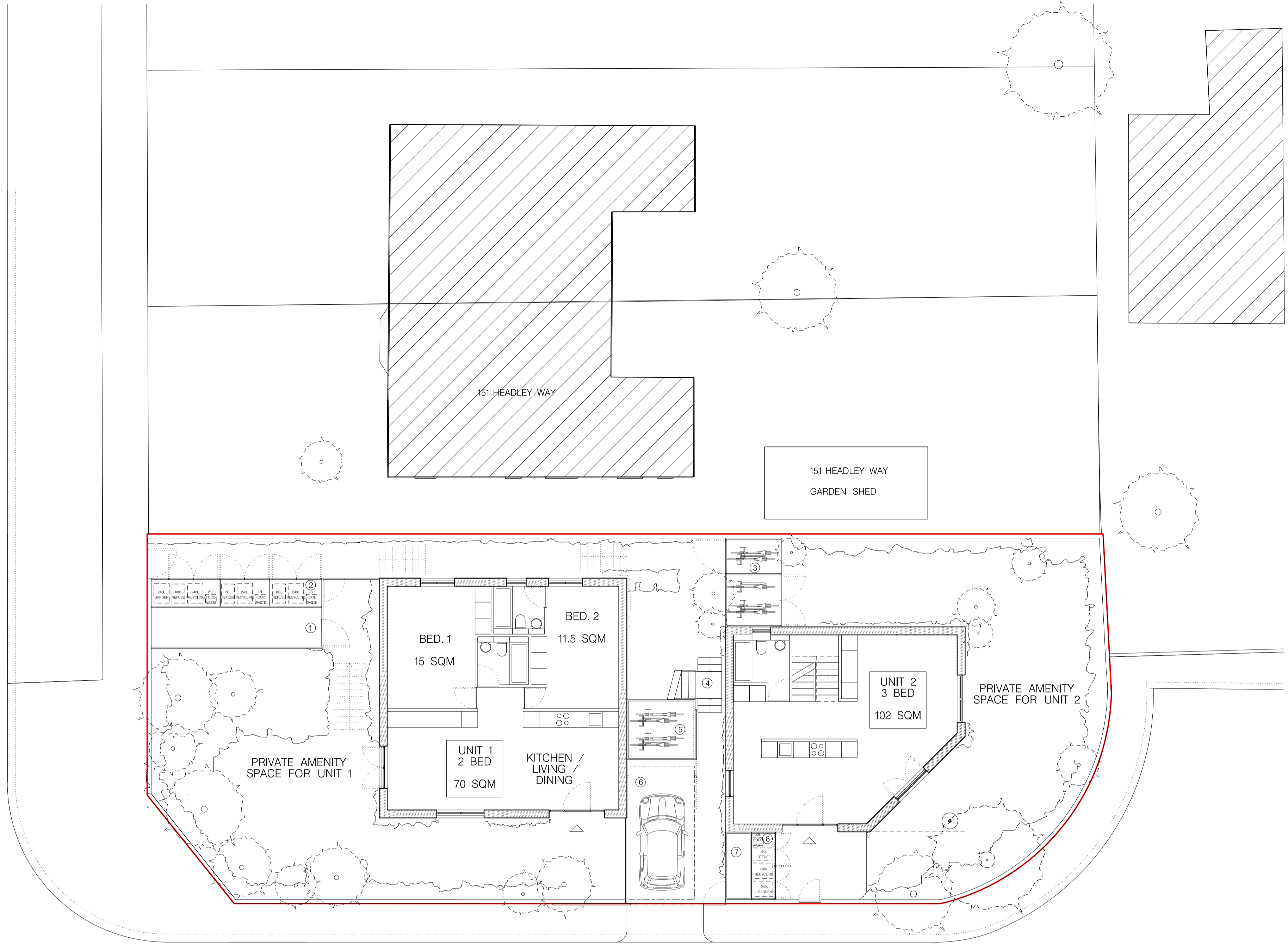


HEADLEY WAY

HEADLEY WAY



FORTNAM CLOSE

1 PROPOSED SITE PLAN

**Key:**

- ① Air source heat pump store for unit 1, 3 and 4
- ② Bin store for unit 1, 3 and 4
- ③ Secured bike store for unit 2
- ④ Staircase unit 3 and 4
- ⑤ secured bike store for unit 1, 3 and 4
- ⑥ Parking bay 2.2m x 4.4m
- ⑦ Air source heat pump store for unit 2
- ⑧ Bin store for unit 2

**NOTE**

No public right of way crossing the site, public pavement to west, south and east of site

Approximate position of proposed trees indicated on the site, and those existing on adjacent land

No hard landscaping on the site. Soft landscaping and semi permeable flooring only.

All site boundaries to be 1.2m fencing around perimeter of site

□ Site boundary



REVISION:	PURPOSE:	DATE:	Notes:	Purpose of Issue:	CLIENT:	PROJECT:	DWG TITLE:	REVISION:	DATE:	SCALE:
C	ISSUED FOR PLANNING	23.05.20	1. Contractors are not to directly scale off this drawing. Dimensions should be obtained from the Engineer or Architect, site checked and any discrepancy between drawings reported.	I=Information C=Comment P=Planning T=Tender S=Construction	GROUPWORK 15A CLERKENWELL CLOSE, LONDON, EC1R 0AA	PREVIGOR DEVELOPMENT LIMITED	SITE PLAN	E	NOV 2023	@ A1 1:100 @ A3 1:200
D	ISSUED FOR PLANNING	30.05.20	2. The design and these drawings are the sole copyright of Amin Taha Architects, 15 Clerkenwell Close, London EC1R 0AA, T. 020 7253 9444 F. 020 7253 9555.			153 HEADLEY WAY, OXFORD, OX3 7SS		DWG No: 253 - 531	PURPOSE OF ISSUE: P	DB: NY CB: AC
E	ISSUED FOR PLANNING	11.12.2023								