

MATERIALS KEY:

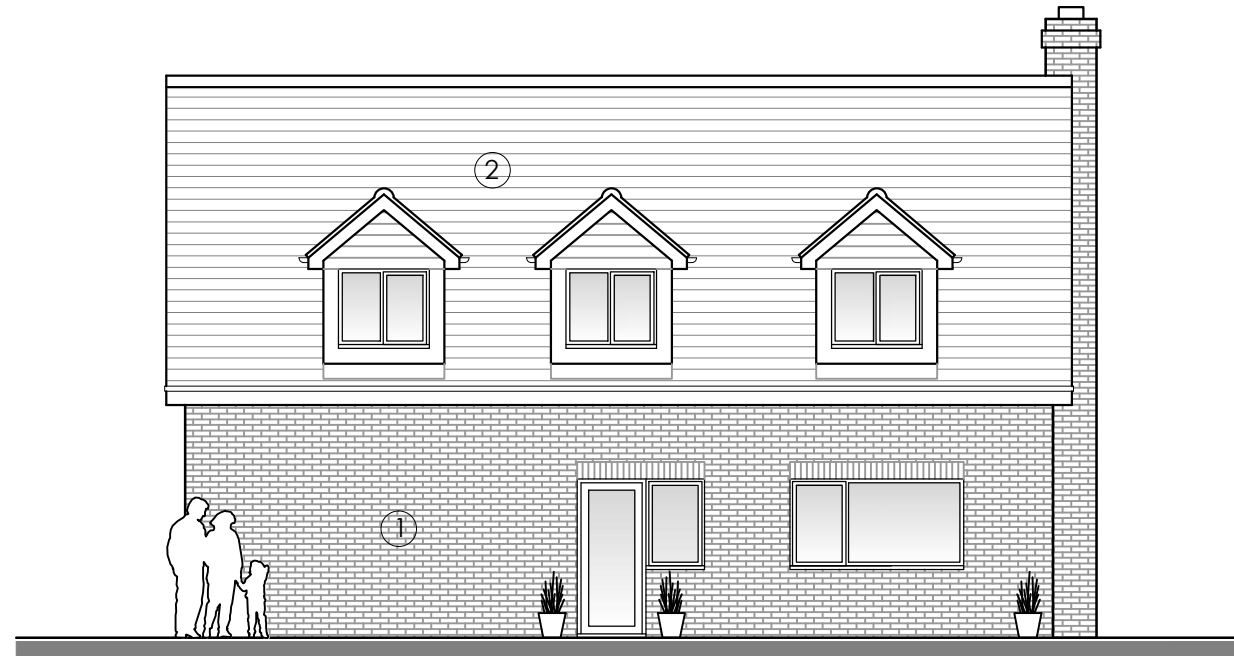
- 1. Red blended stock brickwork.
- 2. Natural slates.

Dark grey PVC windows RAL 7016 Anthracite.

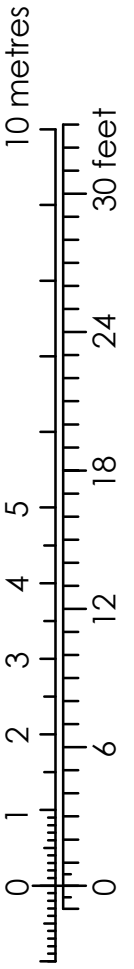
Glazed front door in RAL 7016 Anthracite PVC frames.

Aluminium bi-fold doors and picture window glazing in RAL 7016 Anthracite.

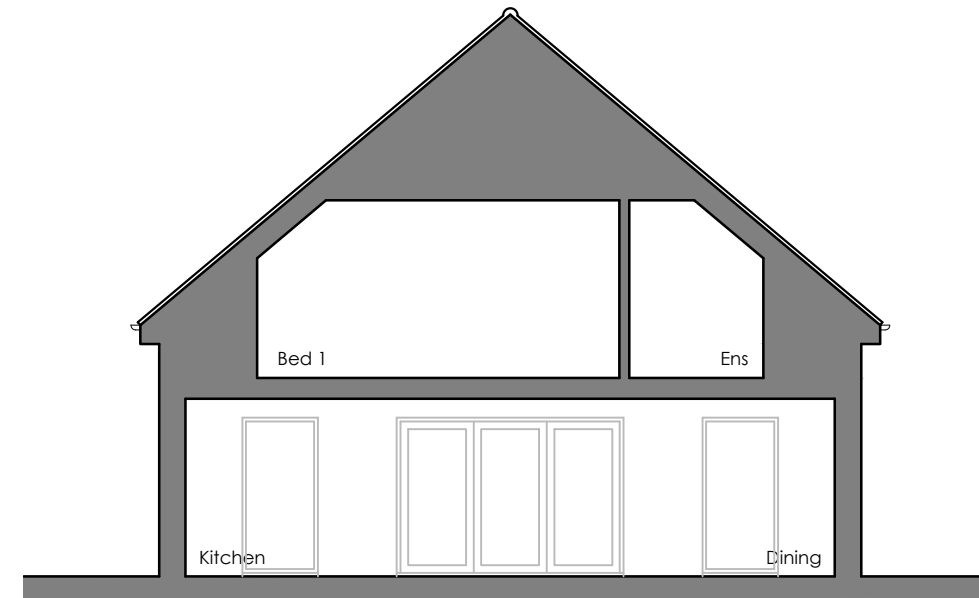
Lead dormer window cheek weathering.



REAR ELEVATION



LEFT FLANK ELEVATION



TYPICAL SECTION

PROPOSED

halshaw  
architecture ltd

Revisions

- A - Dwelling reduced in accordance with officers requirements - 14.09.23
- B - Gable added for variation of condition - 07.12.23

PLANNING SUBMISSION

This drawing remains the property of Halshaw Architecture Ltd. and it may not be reproduced without the express permission of Halshaw Architecture Ltd. Use figured dimensions over scaled dimensions. Verify all dimensions and advise Halshaw Architecture Ltd. of any discrepancies before commencement.

Project

LAND AT REAR OF 1 MAYFIELD VILLAS,  
SHEPHERDSWELL, DOVER, KENT, CT15 7PE.

Title

PROPOSED ELEVATIONS 2 OF 2

Scale Date Drawing Number Revision

1:100 @ A3 Jan '23 092.02-008 B