

Internal Plan view
Scale: 1:100 at A3

Multi-use, configurable internal space for educational / community use

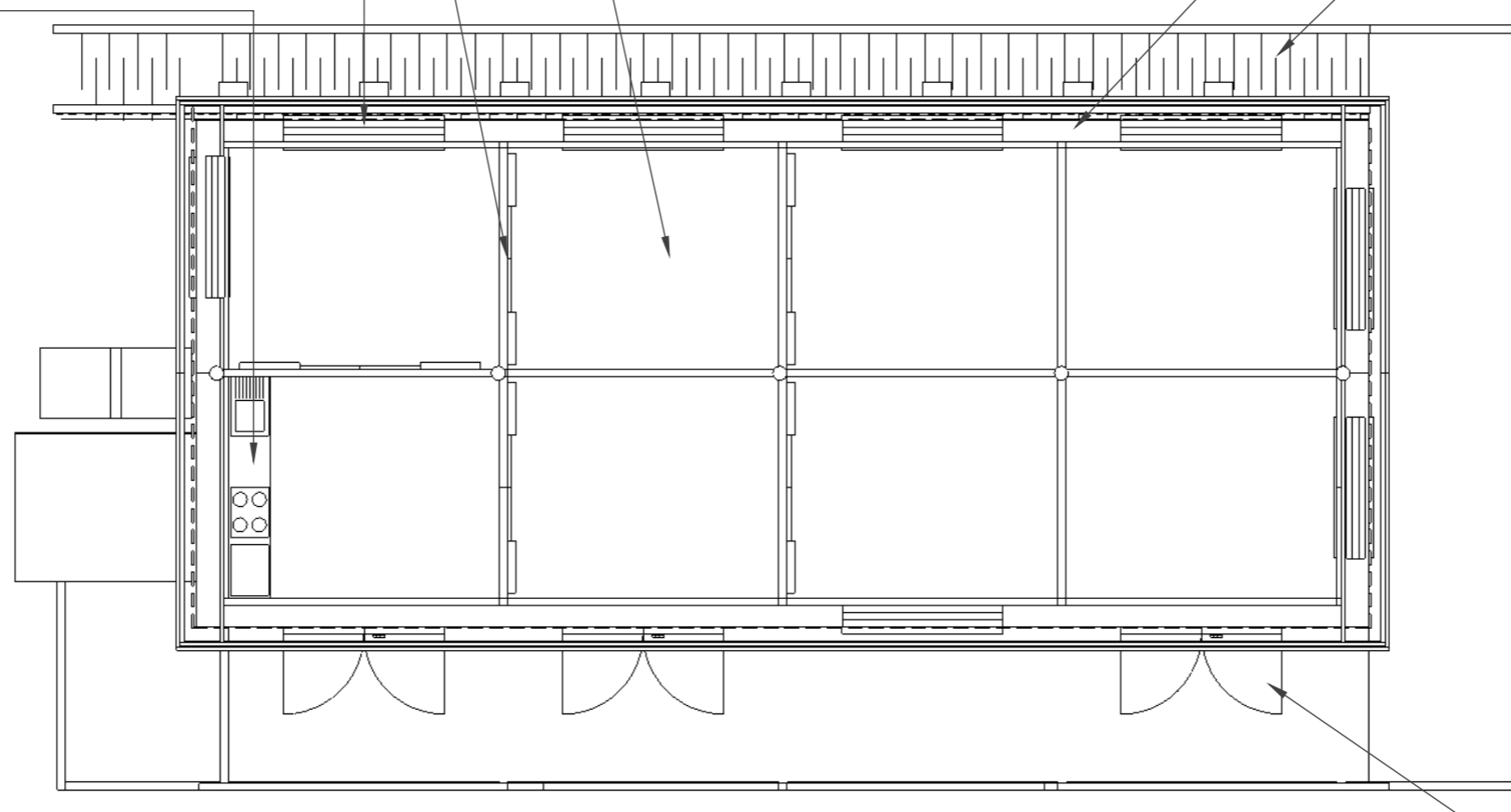
Internal sliding doors (x5) to divide the internal space

Double Glazed windows (x8 in total)

Kitchenette with extraction

Intended insulation type:
Warmcell recycled cellulose blown insulation.
High performance, sustainable material

Ramp and decking area:
Durable/treated timber decking boards
Nominal 5mm gap in-between each board will allow airflow and sunlight underneath the building, supporting the ecological habitat



French doors (x3) to open 180° and pin against wall