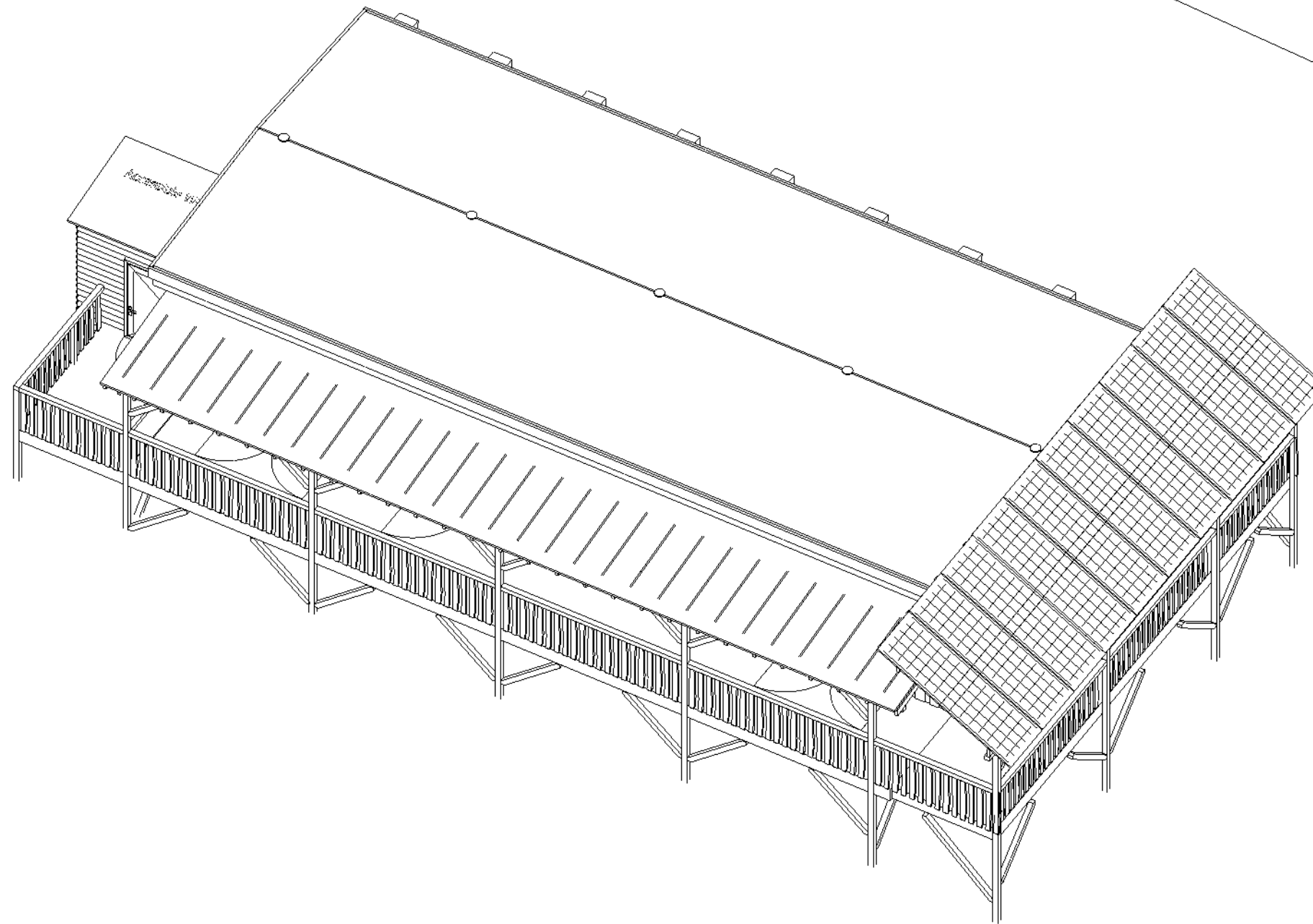


**This page: Overview illustration only - not to scale**



#### Overview

Non-inhabited education space for Wildlife Watching  
Located close to Poole Farm pond and river  
Scheduled used - access can be restricted by Plymouth Council in adverse weather

Internal footprint: 104 m<sup>2</sup>  
Internal volume: 312 m<sup>3</sup>  
External useable space (sheltered raised deck): 64 m<sup>2</sup>

#### Main features:

Fully accessible building including:  
1:12 or shallower wheelchair-accessible ramp from ground level  
Disabled toilet  
Multi-use internal space with sliding-door dividers  
Built using a Larch round-pole timber frame; a sympathetic and beautiful aesthetic for the environment

#### Sustainable and local materials throughout:

Intensive Green Roof  
South-West English felled Larch/Douglas Fir timber frame and cladding  
Minimal use of concrete

**Title:** Proposed Plans and Elevations

**Project:**  
Poole Farm  
Leigham  
Plymouth  
PL6 8NF

**Issue:** 31/05/2023

**Drawn by:** JH

**Page:** 1/8 (Print at A3)

Roundwood Design Ltd.  
Bower Ashton Woodyard  
Kennel Lodge Rd  
Bristol, BS3 2JT  
www.roundwooddesign.co.uk

**ROUND  
WOOD  
DESIGN**