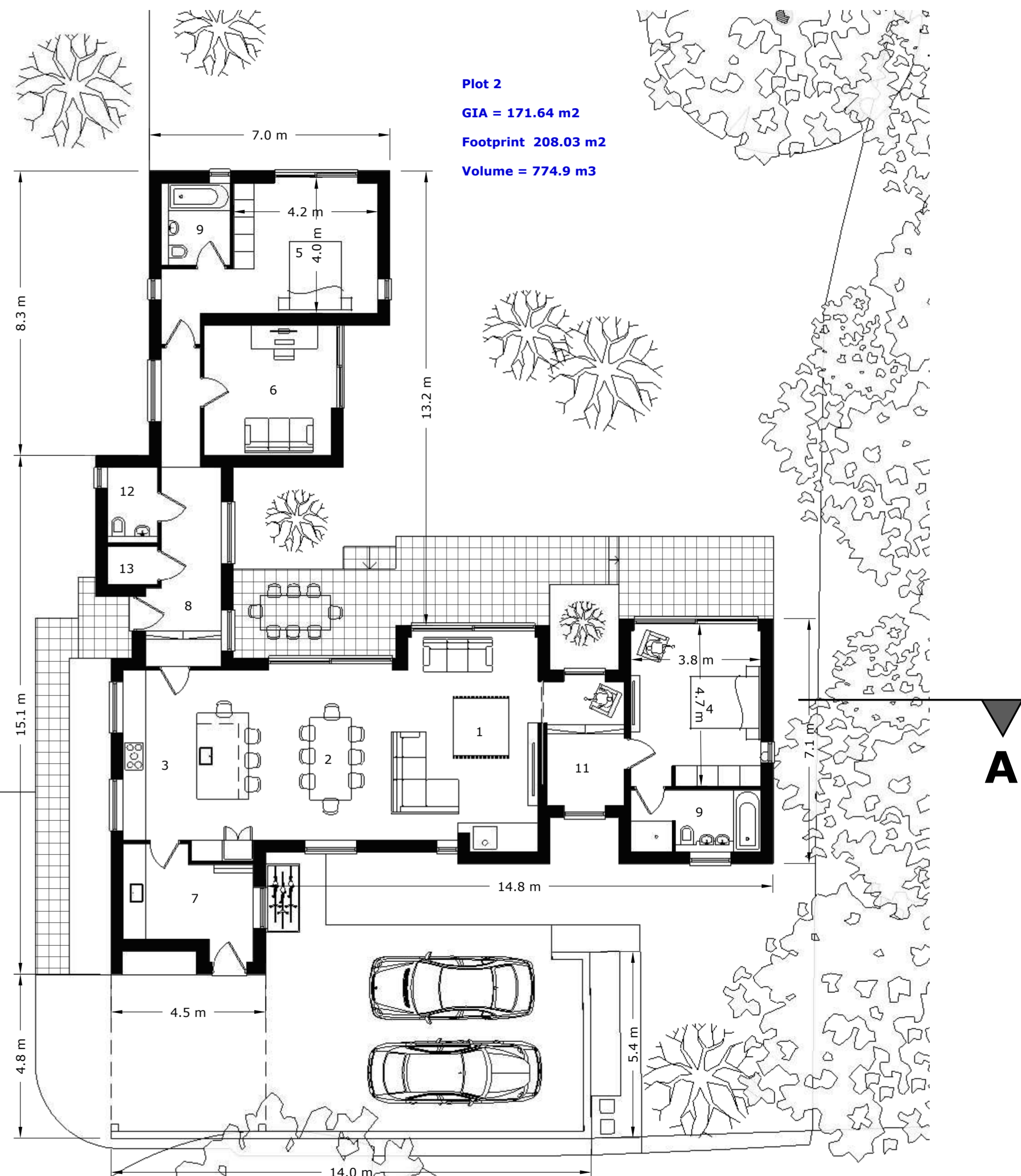
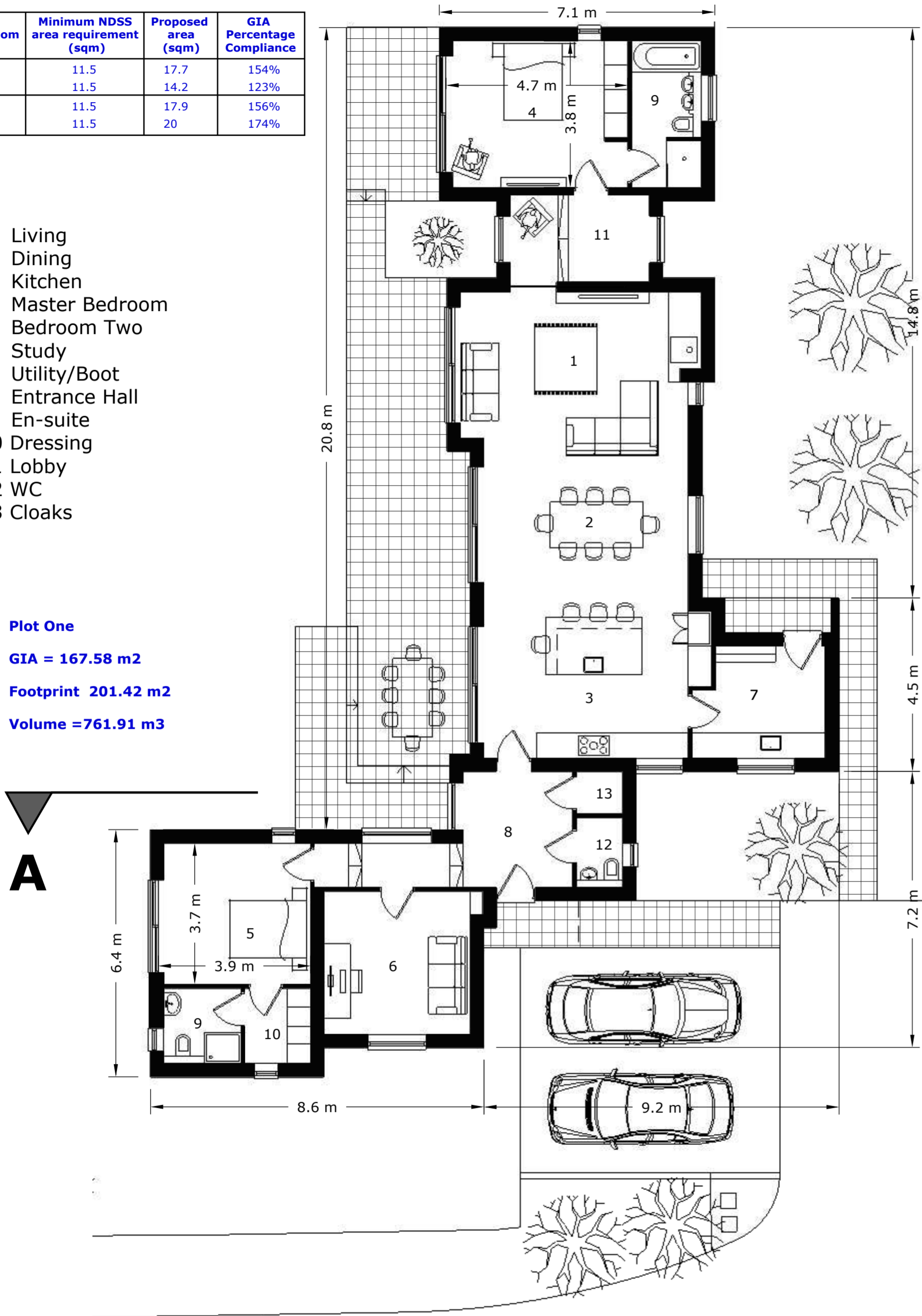


Plot	Number of Bedrooms (bed spaces)	Minimum GIA NDSS requirement (sqm)	Proposed GIA (sqm)	GIA Percentage Compliance	Proposed Built-in storage (required)	Proposed Built-in storage Compliance
One	2 (4person)	70	167.58	239%	4.8 (2)	240%
Two	2 (4person)	70	171.64	245%	4.0 (2)	200%

Plot	Bedroom	Minimum NDSS area requirement (sqm)	Proposed area (sqm)	GIA Percentage Compliance
One	1	11.5	17.7	154%
	2	11.5	14.2	123%
Two	1	11.5	17.9	156%
	2	11.5	20	174%

- 1 Living
- 2 Dining
- 3 Kitchen
- 4 Master Bedroom
- 5 Bedroom Two
- 6 Study
- 7 Utility/Boot
- 8 Entrance Hall
- 9 En-suite
- 10 Dressing
- 11 Lobby
- 12 WC
- 13 Cloaks

Plot One
GIA = 167.58 m²
Footprint 201.42 m²
Volume = 761.91 m³



Plot 2
GIA = 171.64 m²
Footprint 208.03 m²
Volume = 774.9 m³

HOOKE FARM PROPOSALS EFFINGHAM

PROPOSED FLOOR PLANS 1:100

Drg No : HF/11/23/03A