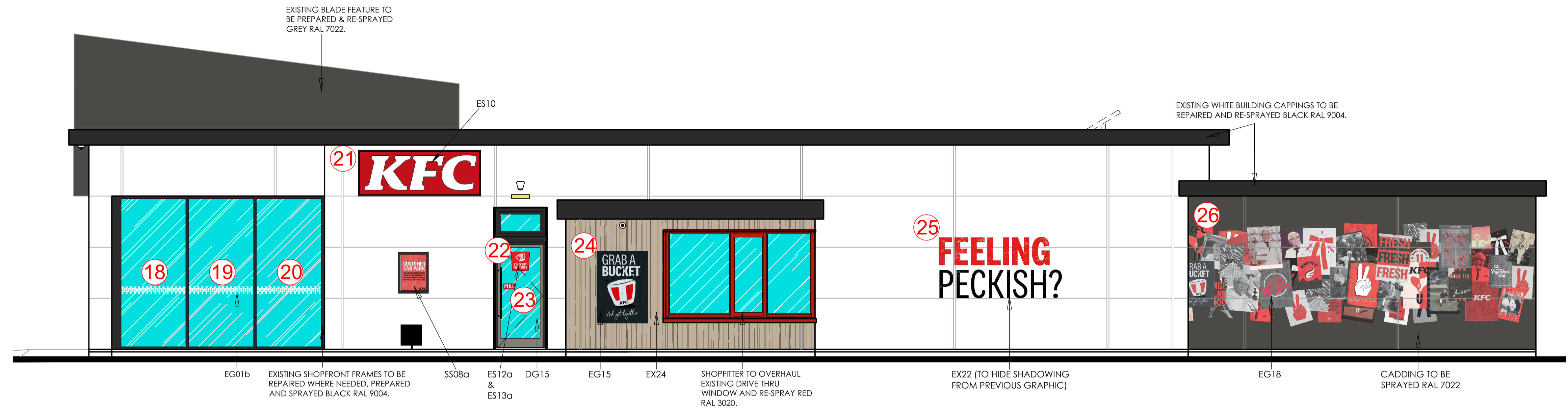
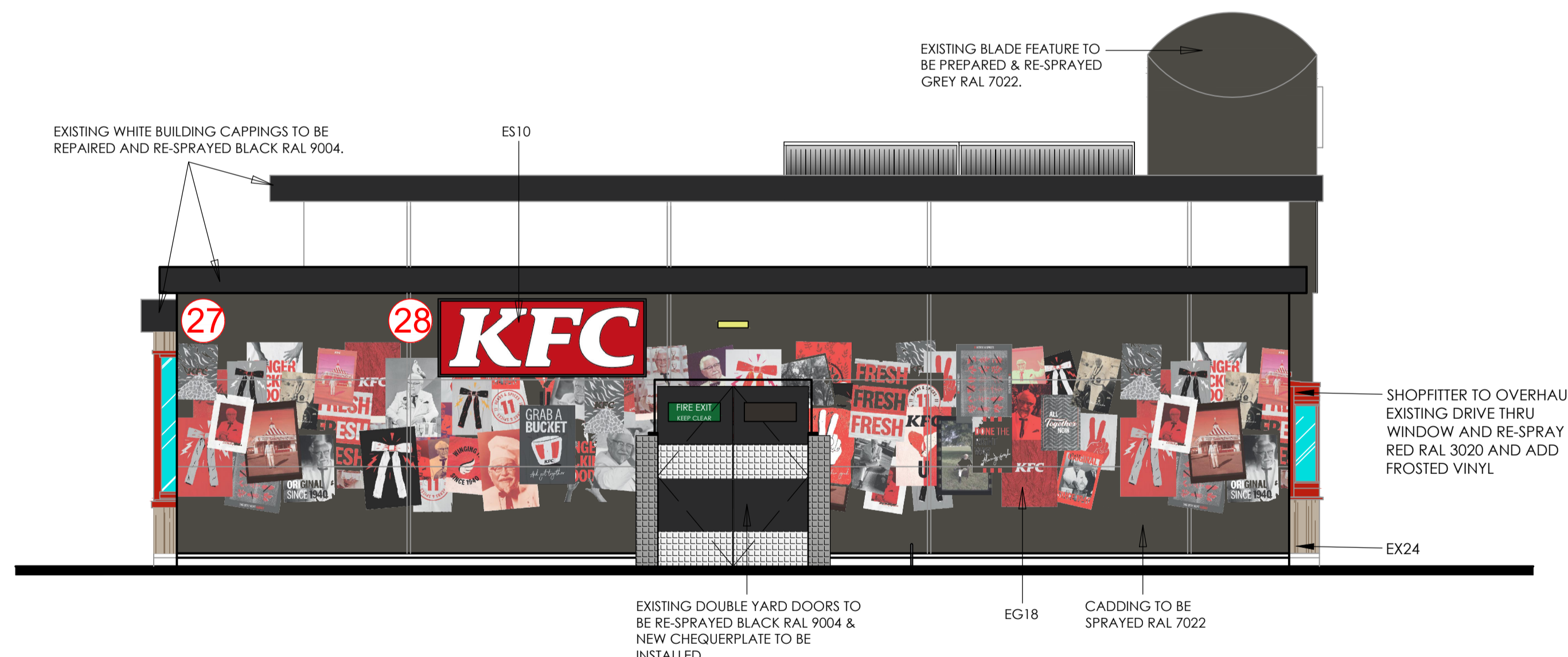


PROPOSED EXTERNAL SIGNAGE SCHEDULE	
signage image (nts)	description
	<b>DG14</b> - SITE MEASURED ALUMINIUM ENTRANCE DOOR POWDER COATED RED RAL 3020 WITH LETTER PLATE TO BOTTOM PANEL & FITTED WITH PUSH/PULL 1m LONG BLACK RAL 9004 NYLON COATED DOOR HANDLES. NEW DDA ACTION BUTTON TO BE INSTALLED ON THE SHOPFRONT FRAME.
	<b>DG15</b> - SITE MEASURED ALUMINIUM FRAME AND DOOR. NEW ALUMINIUM FRAME AND DOOR DOOR TO BE KAWNEER OR SIMILAR. ALUMINIUM FRAME ETCHED CHROMATE CONVERSION COAT TREATED AND FINISHED IN POLYESTER POWDER COATING STOVED AT 200°C. FRAME FINISH - POWDER COATED BLACK RAL 9004. DOOR FINISH - POWDER COATED GREY RAL 7022. 1M LONG PUSH/PULL HANDLES TO BE NYLON COATED AND POWDER COATED IN RAL 9004. DOORS TO BE MANUFACTURED TO INCLUDE "ANTI FINGER TRAP DOOR STYLES". IRONMONGERY FROM LAIDLAW SOLUTION LTD. OR SIMILAR APPROVED GLAZING TO BE 24mm DOUBLE GLAZED UNITS CONSISTING OF 4mm LAMINATED GLASS WITH 16mm SILVER SPACER AND 4mm TOUGHENED GLASS.
	<b>WINDOW MANIFESTATION (EG01b)</b> WHITE BOW TIES AND WISH BONES ON CLEAR VINYL APPLIED TO INSIDE OF WINDOW.
	<b>GRAB A BUCKET - VINYL (EG15)</b> A1 SIZE VINYL POSTER
	<b>11 HERBS AND SPICES EXTERNAL GRAPHIC (EG13)</b> VINYL GRAPHIC APPLIED ON EXTERNAL CLADDING. <b>SIZE SITE SPECIFIC.</b>
	<b>FEELING PECKISH? GRAPHIC (EG22)</b> VINYL GRAPHIC APPLIED ON EXTERNAL BRICKWORK. WHITE AND BLACK. <b>SIZE SITE SPECIFIC.</b>
	<b>HELLO HYDE (ES03)</b> INTERNALLY ILLUMINATED TEXT. HUNG IN WINDOW.
	<b>OPENING HOURS (SITE SPECIFIC) (ES04a)</b> VINYL APPLIED FACING OUT OF STORE.
	<b>KFC WHITE (ES07a)</b> ALUMINIUM LETTERS. POWDER COATED RAL 9005 (SEMI-GLOSS). WITH 5mm OPAL 050 PERSPEX FACE AND LED INTERNAL ILLUMINATION BY SLOAN LED PRISM
	<b>KFC LIGHTBOX - WHITE (WITH RED BACKGROUND) (ES10)</b> INTERNALLY ILLUMINATED LIGHTBOX. OUTER FACES DI-BOND RAL 3020. FRET CUT LETTERS/CUT THROUGH DI-BOND TO OPAL 050 PERSPEX FACE AND LED INTERNAL ILLUMINATION BY SLOAN LED PRISM.
	<b>COLONEL &amp; BUCKET (ES11)</b> 1300mm HIGH INTERNALLY ILLUMINATED COLONEL SIGN BOX FABRICATED FROM BLACK POWDER COATED ALUMINIUM SIGN CASING WITH OPAL FLEX FACE PANEL DECORATED WITH 3M VINYL TO FORM COLONEL LOGO. SIGN TO BE ILLUMINATED BY LEDS.
	<b>DELIVERY DRIVERS ENTRANCE - VINYL (ES12a)</b> RED 3M3630-53 VINYL WITH WHITE WRITING. <b>SIZE SITE SPECIFIC.</b>
	<b>DELIVERY DRIVERS ENTRANCE - VINYL (ES14a)</b> RED 3M3630-53 VINYL WITH WHITE WRITING. <b>SIZE SITE SPECIFIC.</b>
	<b>FLY POSTER EXTERNAL GRAPHIC (EG18)</b> VINYL CUT PRINTED ONTO CLEAR AND APPLIED ON EXTERNAL WALL CLADDING <b>SIZE SITE SPECIFIC.</b>
	<b>ENTRANCE DOUBLE SIDED LIGHTBOX - VINYL (ES19)</b> MATT CUT VINYL REVERSE APPLIED TO LIGHTBOX INSTALLED ABOVE ENTRANCE DOOR.
	<b>NEON BUCKET PORTAL (ES20.1)</b> WHITE STATIC ILLUMINATED BUCKET SHAED PORTAL TO BE INSTALLED AROUND ENTRANCE. OPAL DIFFUSER.
	<b>DURASID SIDING V-GROOVE 250mm - DIGITALLY PRINTED VERTICAL PLANKS (EX24)</b> DURASID SIDING V-GROOVE 250mm - DIGITALLY PRINTED VERTICAL PLANKS COLOUR: 527250 - 005 BARNWOOD GREY



**Proposed side elevation**  
scale - 1:50 @ A1 / 1:100 @ A3



**Proposed rear elevation**  
scale - 1:50 @ A1 / 1:100 @ A3

© copyright 2023  
this drawing and the copyrights and patents therein are the designer's property and may not be used or reproduced - only under contract

ALL DIMENSIONS TO BE CHECKED ON SITE.  
DO NOT SCALE FROM THIS DRAWING EXCEPT FOR THE PURPOSES OF LOCAL AUTHORITY PLANNING

rev	date	description
A	20/12/23	Drawing amended following KFC mark ups; blade feature sprayed grey RAL 7022; EX22 graphic relocated; ES13a graphic noted; chequerplate shown to rear doors.



**IMAGE ENHANCEMENT**

store address  
**HYDE**  
CLARENDON ROAD  
CHESHIRE  
SK14 2QZ  
franchisee  
**SASA LTD**

drawing title  
**PROPOSED**  
EXTERNAL ELEVATIONS - SHEET 2

drawn by	checked	date
JC	----	22-03-23
store no.	scale	
020/64	1:50 @ A1	

KFC drawing no.	FB ref.	revision
2064/2023/P212	2023/33	A

**Frank Belshaw**  
Building Surveyors Limited

wheatley springs barn, wheatley lane road,  
barrowford, nelson, lancashire, BB9 6QS,  
tel.no. [01282] 699668. fax no. [01282] 602447.