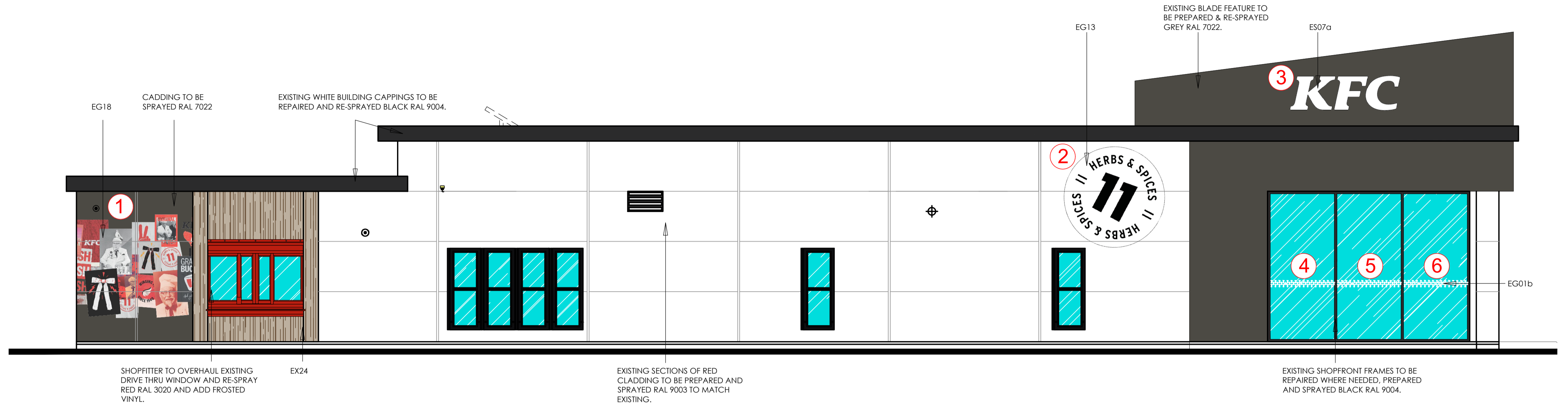
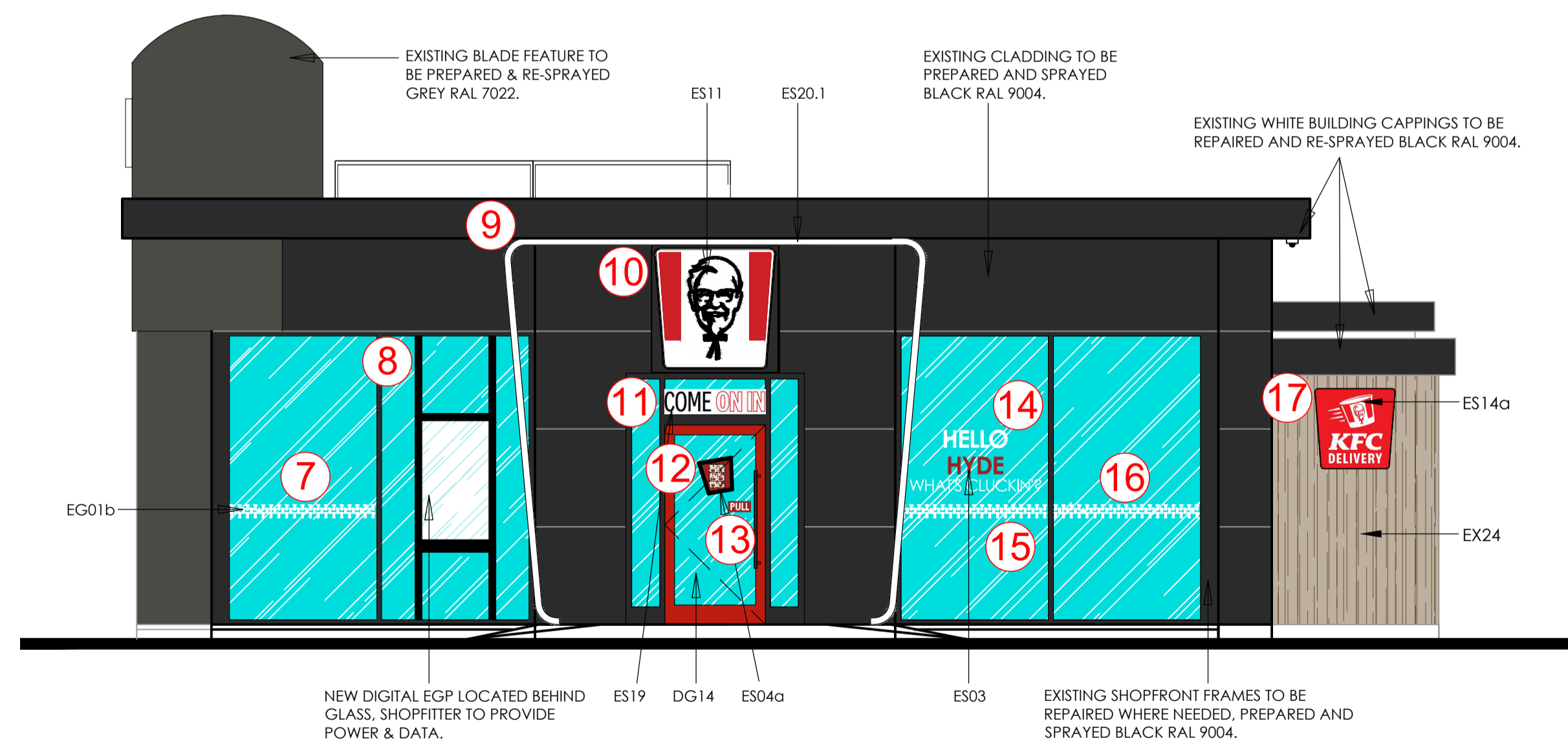


PROPOSED EXTERNAL SIGNAGE SCHEDULE	
signage image (nts)	description
	DG14 - SITE MEASURED ALUMINIUM ENTRANCE DOOR POWDER COATED RED RAL 3020 WITH LETTER PLATE TO BOTTOM PANEL & FITTED WITH PUSH/PULL 1m LONG BLACK RAL 9004 NYLON COATED DOOR HANDLES. NEW DDA ACTION BUTTON TO BE INSTALLED ON THE SHOPFRONT FRAME.
	DG15 - SITE MEASURED ALUMINIUM FRAME AND DOOR. NEW ALUMINIUM FRAME AND DOOR TO BE KAWNEER OR SIMILAR. ALUMINIUM FRAME ETCHED CHROMATE CONVERSION COAT TREATED AND FINISHED IN POLYESTER POWDER COATING STOVED AT 200°C. FRAME FINISH - POWDER COATED BLACK RAL 9004. DOOR FINISH - POWDER COATED GREY RAL 7023. 1M LONG PUSH/PULL HANDLES TO BE NYLON COATED AND POWDER COATED IN RAL 9004. DOORS TO BE MANUFACTURED TO INCLUDE "ANTI FINGER TRAP DOOR STYLES". IRONMONGERY FROM LAIDLAW SOLUTION LTD. OR SIMILAR APPROVED GLAZING TO BE 24mm DOUBLE GLAZED UNITS CONSISTING OF 4mm LAMINATED GLASS WITH 16mm SILVER SPACER AND 4mm TOUGHENED GLASS.
	WINDOW MANIFESTATION (EG01b) WHITE BOW TIES AND WISH BONES ON CLEAR VINYL APPLIED TO INSIDE OF WINDOW.
	GRAB A BUCKET - VINYL (EG15) A1 SIZE VINYL POSTER
	11 HERBS AND SPICES EXTERNAL GRAPHIC (EG13) VINYL GRAPHIC APPLIED ON EXTERNAL CLADDING. SIZE SITE SPECIFIC.
	FEELING PECKISH GRAPHIC (EG22) VINYL GRAPHIC APPLIED ON EXTERNAL BRICKWORK. WHITE AND BLACK. SIZE SITE SPECIFIC.
	HELLO HYDE (ES03) INTERNALLY ILLUMINATED TEXT. HUNG IN WINDOW.
	OPENING HOURS (SITE SPECIFIC) (ES04a) VINYL APPLIED FACING OUT OF STORE.
	KFC WHITE (ES07a) ALUMINIUM LETTERS. POWDER COATED RAL 9005 (SEMI-GLOSS). WITH 5mm OPAL 050 PERSEPEX FACE AND LED INTERNAL ILLUMINATION BY SLOAN LED PRISM
	KFC LIGHTBOX - WHITE (WITH RED BACKGROUND) (ES10) INTERNALLY ILLUMINATED LIGHTBOX. OUTER FACES DI-BOND RAL 3020. FRET CUT LETTERS CUT THROUGH DI-BOND TO OPAL 050 PERSEPEX FACE AND LED INTERNAL ILLUMINATION BY SLOAN LED PRISM.
	COLONEL & BUCKET (ES11) 1300mm HIGH INTERNALLY ILLUMINATED COLONEL SIGN BOX FABRICATED FROM BLACK POWDER COATED ALUMINIUM SIGN CASING WITH OPAL FLEX FACE PANEL DECORATED WITH 3M VINYL TO FORM COLONEL LOGO. SIGN TO BE ILLUMINATED BY LEDS.
	DELIVERY DRIVERS ENTRANCE - VINYL (ES12a) RED 3M3630-53 VINYL WITH WHITE WRITING. SIZE SITE SPECIFIC.
	DELIVERY DRIVERS ENTRANCE - VINYL (ES14a) RED 3M3630-53 VINYL WITH WHITE WRITING. SIZE SITE SPECIFIC.
	FLY POSTER EXTERNAL GRAPHIC (EG18) VINYL CUT PRINTED ONTO CLEAR AND APPLIED ON EXTERNAL WALL CLADDING SIZE SITE SPECIFIC.
	ENTRANCE DOUBLE SIDED LIGHTBOX - VINYL (ES19) MATT CUT VINYL REVERSE APPLIED TO LIGHTBOX INSTALLED ABOVE ENTRANCE DOOR.
	NEON BUCKET PORTAL (ES20.1) WHITE STATIC ILLUMINATED BUCKET SHAED PORTAL TO BE INSTALLED AROUND ENTRANCE. OPAL DIFFUSER.
	DURASID SIDING V-GROOVE 250mm - DIGITALLY PRINTED VERTICAL PLANKS (EX24) DURASID SIDING V-GROOVE 250mm - DIGITALLY PRINTED VERTICAL PLANKS COLOUR: 527250 - 005 BARNWOOD GREY



Proposed side elevation
scale - 1:50 @ A1 / 1:100 @ A3



Proposed front elevation
scale - 1:50 @ A1 / 1:100 @ A3

© copyright 2023
this drawing and the copyrights and patents therein are the designer's property and may not be used or reproduced - only under contract

ALL DIMENSIONS TO BE CHECKED ON SITE.
DO NOT SCALE FROM THIS DRAWING EXCEPT FOR THE PURPOSES OF LOCAL AUTHORITY PLANNING

rev	date	description
A	20/12/23	Drawing amended following KFC mark ups: fly poster graphic added to rear section of building and cladding sprayed grey RAL 7022; KFC letters removed; EX24 shown to order window; red section of building re-sprayed RAL 9003 to match existing; EG13 graphic shown; blade feature sprayed grey RAL 7022; front of building sprayed black RAL 9004; digital EGP re-located.

Frank Belshaw
Building Surveyors Limited

wheatley springs barn, wheatley lane road, barrowford, neton, lancashire, B89 6QS.
tel no. (01282) 699668, fax no. (01282) 602447.

Soul Foods Group

KFC

IMAGE ENHANCEMENT

store address
HYDE
CLARENDON ROAD
CHESHIRE
SK14 2QZ
franchisee
SASA LTD

drawing title
PROPOSED EXTERNAL ELEVATIONS - SHEET 1

drawn by	checked	date
JC	----	22-03-23
store no.	scale	
020/64	1:50 @ A1	
KFC drawing no.	FB ref.	revision
2064/2023/P211	2023/33	A