



Marian Court, Robin Hood Lane, Sutton, SM1

Daylight and Sunlight Assessment

Job No: 5124

Issued: July, 2023

Issue No.: 1



Contents

1.0 Introduction.....3

2.0 Project Summary.....4

3.0 Methodology.....5

4.0 Modelling & Data Sources.....6

5.0 BRE Guidance Targets.....7

6.0 Window Schedules.....8

7.0 Daylight Impact Results.....9

8.0 Sunlight Impact Results.....11

9.0 Sunlight to Neighbouring Gardens.....13

10.0 Conclusions.....14

Document Prepared By:

Document Authorised By:

Samuel Westover

Bernice Waterman

Dated:

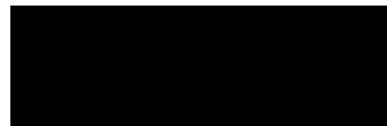
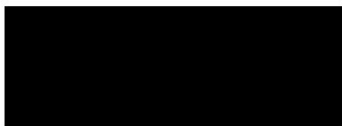
Dated:

25.07.23

25.07.23

Signed:

Signed:



This report has been prepared for the exclusive use of the commissioning party and may not be reproduced without prior written permission from T16 Design.

All work has been carried out within the terms of the brief using all reasonable skill, care, and diligence. No liability is accepted by T16 Design for the accuracy of data or opinions provided by others in the preparation of this report, or for any use of this report other than for the purpose for which it was produced.

1.0 Introduction

- 1.1 This daylight and sunlight assessment has been prepared to support a planning application at Marian Court, Robin Hood Lane, Sutton SM1.
- 1.2 The report assesses the proposals in respect of daylight, sunlight and overshadowing matters, having regard to industry standard guidance. The report concludes that the proposal is acceptable and in accordance with planning policy requirements in relation to daylight and sunlight.
- 1.3 There is no existing specific National Planning Policy relating to the prospective impacts of developments on daylight and sunlight on their surrounding environment.
- 1.4 However, the BRE Report 'Site Layout Planning for Daylight and Sunlight: A Guide to Good Practice' (3rd Edition, 2022) is the established National guidance to aid the developer to prevent and/or minimise the impact of a new development on the availability of daylight and sunlight in the environs of the site. It has been developed in conjunction with daylight and sunlight recommendations in BS EN 17037: 'Daylight in Buildings'
- 1.5 This reference document is accepted as the authoritative work in the field on daylight, sunlight and overshadowing and is specifically referred to in many Local Authorities' planning policy guidance for daylighting. The methodology therein has been used in numerous lighting analyses and the standards of permissible reduction in light are accepted as the industry standards.

2.0 Project Summary

- 2.1 The proposal site is located at Marian Court, Robin Hood Lane, Sutton SM1 and it is currently occupied by three, three storey blocks of residential dwellings.
- 2.2 The proposal is for a an upwards extension on each of the block to provide additional living units.
- 2.3 The impacts of the scheme have been assessed, in line with BRE guidance. Generally, it is the impacts on residential neighbours which are of primary concern.
- 2.4 Further details on the location of the assessed neighbours and their windows are given in Section 5.0.



Site Location

3.0 Methodology

- 3.1 For this analysis, we have undertaken the most common calculations for the change in daylight and sunlight to existing buildings, as recommended in BRE Digest 209. These are:
- Vertical Sky Component (VSC) for daylight
 - Annual Probable Sunlight Hours and Winter Probable Sunlight Hours (A/WPSH) for sunlight impacts
- 3.2 The VSC method measures the general amount of light available on the outside plane of the window as a ratio (%) of the amount of total unobstructed sky viewable following introduction of visible barriers such as buildings. The maximum value is just under 40% for a completely unobstructed vertical wall.
- 3.3 The VSC is calculated using computer simulation under a CIE overcast sky. This works by simulating the amount of visible sky from the centre point of each window. It is not affected by orientation and so all potentially affected windows are assessed.
- 3.4 Annual Probable Sunlight Hours (APSH) and Winter Probable Sunlight Hours (WPSH) are a measure of the amount of potential direct sunlight that is available to a given surface. APSH covers sunlight over the whole year and WPSH from September 21st to March 21st. The number of total available hours is calculated from a data file in the software, built up over a number of years of actual weather data records.
- 3.5 Only windows which face within 90° of due south need be assessed for sunlight.

4.0 Modelling & Data Sources

- 4.1 The first stage of the analysis is to create the analysis model of the existing site condition and the proposal. This allows us to analyse the impact of the proposal when compared to the existing condition.
- 4.2 2D drawings have been provided by the design team. These drawings are used to construct a 3D analysis model which is exported into the specialist daylight software. Calculations are then run, for both existing and proposed scenarios.
- 4.3 Sufficient detail is added to the model for the analysis. In accordance with BRE recommendations, trees and foliage have been omitted from the calculations.
- 4.4 Information on the properties has been provided to us by the design team in the form of drawings giving the site as existing and proposed and photographs of the site and surroundings.
- 4.5 Web-based mapping sources and photos have been used to for location and size of neighbouring windows.

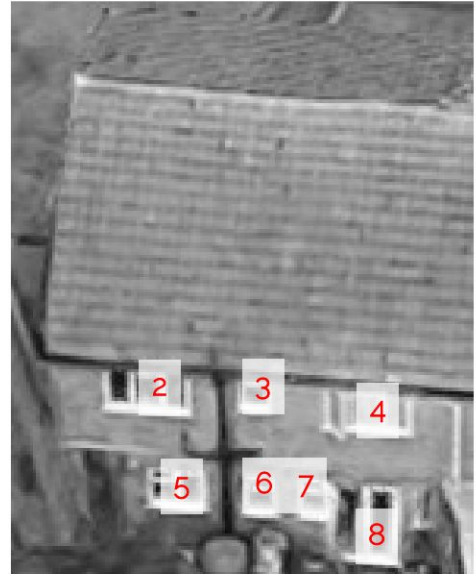
5.0 BRE Guidance Targets

- 5.1 The reference document for this analysis, BRE Digest 209, gives the methodology for undertaking the calculations. It also provides benchmark figures for the acceptable reduction in the daylight on existing properties which might be affected by development.
- 5.2 Specifically, the guidance gives figures for the VSC and APSH, as a percentage reduction that is "permissible" for the effect on existing windows.
- 5.3 It is worth noting the following statement in the Guidance introduction:
- 5.4 "The guide is intended for building designers and their clients, consultants and planning officials. The advice given here is not mandatory and this document should not be seen as an instrument of planning policy. Its aim is to help rather than constrain the developer.
- 5.5 Although it gives numerical guidelines, these should be interpreted flexibly because natural lighting is only one of the many factors in site layout design.
- 5.6 The relevant BRE recommendations for daylight and sunlight are:
- The Vertical Sky Component measured at the centre of a window should be no less than 27, or if reduced to below this, no less than 0.8 times the former value.
 - The window should receive at least 25% of available annual sunlight hours and more than 5% during the winter months (September 21st to March 21st), or, where this is not the case, 80% of its former value.

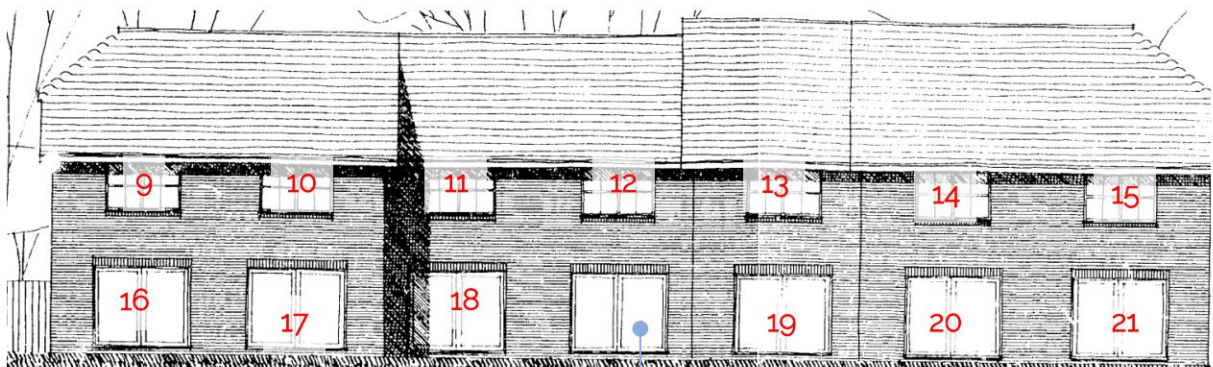
6.0 Window Schedules



11 Robin hood Court (Side Elevation)



11 Robin hood Court (Rear



Window replaced with
Conservatory

Albany Mews (Rear Elevation)



5- 9 Russel Way (Rear Elevation)

7.0 Daylight Impact Results

- 7.1 The Vertical Sky Component has been calculated for each of the 14 assessed windows for both the existing and proposed conditions.
- 7.2 As can be seen in the results below, all windows retain 80% of their current values.
- 7.3 The scheme is therefore compliant with BRE recommendations in relation to daylight impacts.

Vertical Sky Component				
Window	Existing VSC	Proposed VSC	% Retained	Meets BRE Guidance?
1	32.00	28.88	90.25%	Yes
2	36.44	35.58	97.64%	Yes
3	35.29	34.79	98.58%	Yes
4	37.07	36.52	98.52%	Yes
5	33.39	32.75	98.08%	Yes
6	34.12	33.48	98.12%	Yes
7	34.02	33.48	98.41%	Yes
8	30.58	30.00	98.10%	Yes
9	36.77	36.16	98.34%	Yes
10	36.46	35.79	98.16%	Yes
11	32.96	32.29	97.97%	Yes
12	36.19	35.37	97.73%	Yes



7.0 Daylight Impact Results

Vertical Sky Component				
Window	Existing VSC	Proposed VSC	% Retained	Meets BRE Guidance?
13	36.15	35.33	97.73%	Yes
14	36.66	35.78	97.60%	Yes
15	36.46	35.55	97.50%	Yes
16	34.16	33.49	98.04%	Yes
17	33.94	33.14	97.64%	Yes
18	31.33	30.50	97.35%	Yes
19	29.84	28.93	96.95%	Yes
20	30.59	29.62	96.83%	Yes
21	30.30	29.25	96.53%	Yes
22	35.21	33.95	96.42%	Yes
23	34.66	33.46	96.54%	Yes
24	35.14	34.00	96.76%	Yes
25	32.34	31.28	96.72%	Yes
26	35.47	34.29	96.67%	Yes
27	34.11	33.04	96.86%	Yes
28	35.80	34.82	97.26%	Yes
29	31.83	30.24	95.00%	Yes
30	30.51	29.09	95.35%	Yes
31	31.72	30.24	95.33%	Yes
32	32.63	31.33	96.02%	Yes

8.0 Sunlight Impact Results

- 8.1 BRE guidance states that only windows which face within 90° of due south need be assessed for sunlight provision. In this instance, 7 windows fall into this category. The Annual Probable Sunlight Hours has been calculated for each of these windows for both the existing and proposed conditions using the methodology described previously, both over the whole year, and through the "winter months" (September 21st until March 21st).
- 8.2 The BRE guidance states that the sun lighting may be adversely affected if the centre of the window:
- Receives less than 25% of annual hours or less than 5% of winter hours and
 - Receives less than 80% of its current sunlight hours during either period and
 - Has a reduction in sunlight over the whole year greater than 4% of annual probable sunlight hours
- 8.3 It is clear from the wording of the above that all three clauses need to be met to qualify as an adverse impact. Thus, if the window does not meet any one of these criteria, the impact is acceptable.
- 8.4 The results below show that all of the assessed windows retain over 80% of their existing hours for both annual and winter hours.
- 8.5 The scheme is therefore compliant with BRE guidance in relation to sunlight impacts.

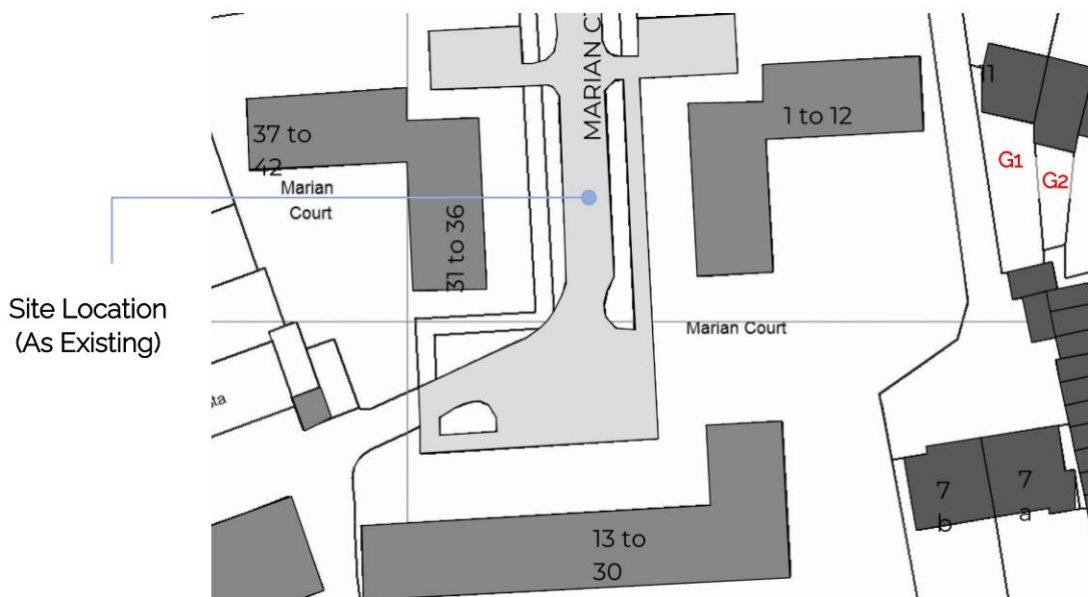


8.0 Sunlight Impact Results

Window	Annual Sunlight Hours			Winter Sunlight Hours			Meets Guidance?
	Ex. Hrs Received (%)	Prop. Hrs Received	% Retained	Ex. Hrs Received	Prop. Hrs Received	% Retained	
2	79.56	76.51	96.17%	30.08	29.87	99.31%	Yes
3	72.00	71.93	99.90%	28.34	28.27	99.76%	Yes
4	81.57	78.10	95.75%	30.08	29.94	99.54%	Yes
5	71.17	70.62	99.22%	28.14	27.72	98.52%	Yes
6	71.31	69.85	97.96%	27.37	26.89	98.23%	Yes
7	71.73	71.31	99.42%	25.36	25.09	98.91%	Yes
8	60.43	60.01	99.31%	19.33	19.13	98.92%	Yes

9.0 Sunlight to Neighbouring Gardens

- 9.1 Residential gardens are generally assessed using the sunlight /hours test, but only on March 21st. The guidance describes a well-lit space as being one which receives at least 2 hours of direct sunlight on this date over 50% of its area.
- 9.2 BRE guidance also uses the "80%" rule for this test, whereby the effects are considered acceptable if the remaining sunlight is in excess of 80% of the existing level. This clause applies if the space is reduced to less than 50% of the area well sunlit.
- 9.3 The garden of the nearest neighbouring property to the site was assessed using this methodology.
- 9.4 As can be seen, the neighbouring gardens retain over 80% of their existing values and the scheme is therefore compliant with BRE guidance



Amenity Sunlight Hours				
Garden	Existing Area Receiving 2 Hours	Proposed Area Receiving 2 Hours	% Retained	Meets BRE Guidance?
G1	87%	87%	100.00%	Yes
G2	83%	83%	100.00%	Yes

10.0 Conclusions

- 10.1 Using industry standard methodology, we have made numerical analyses to ascertain the effects of the proposal at Marian Court, Robin Hood Lane, Sutton SM1 and the levels of change in daylight and sunlight for the windows of the neighbouring properties.
- 10.2 The main criteria used in this analysis to show compliance are the Vertical Sky Component for daylight impacts and Annual and Winter Probable Sunlight Hours for sunlight impacts
- 10.3 As has been shown, the effect on VSC is within the 80% guidance value for the all of the assessed windows.
- 10.4 We conclude that these impacts are considered acceptable and within the BRE guidance recommendations.
- 10.5 In terms of sunlight, the assessed windows retain 80% of their existing values both annually and over the winter months.
- 10.6 The neighbouring amenity spaces retain over 80% their existing values.
- 10.7 The scheme is therefore compliant with BRE guidance in relation to sunlight impacts.
- 10.8 From a planning perspective therefore, it is the conclusion of this report that the proposed development is entirely acceptable for planning, in daylight and sunlight terms.



T16 Design Ltd.

T: 01206 572452

E: info@t16design.com

W: www.t16design.com

© 2023