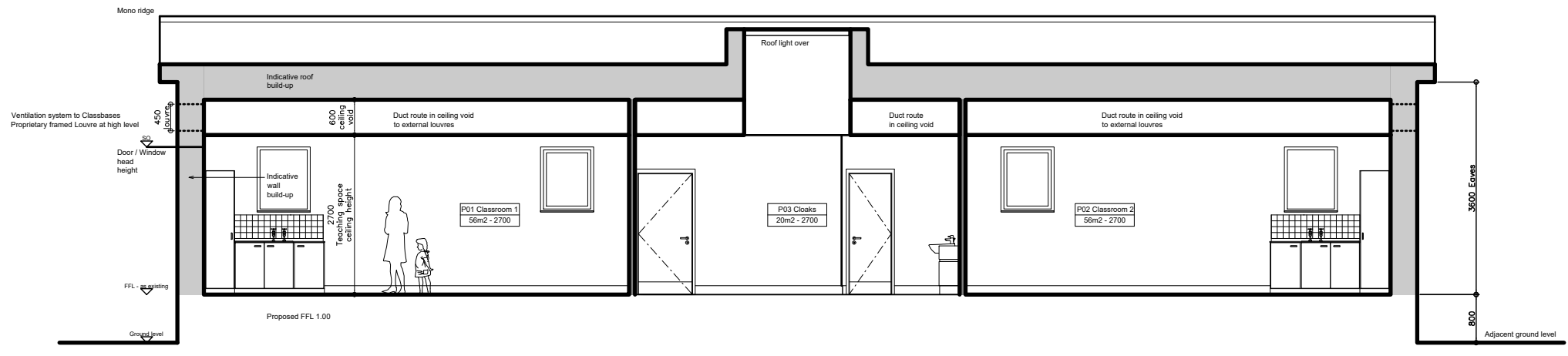
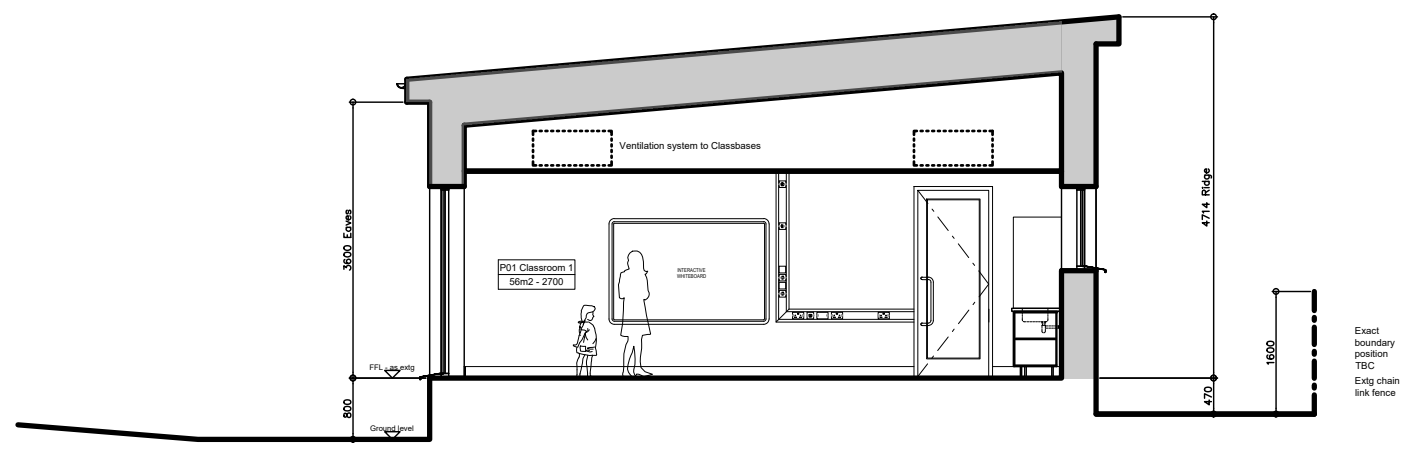


Notes



Section A-A



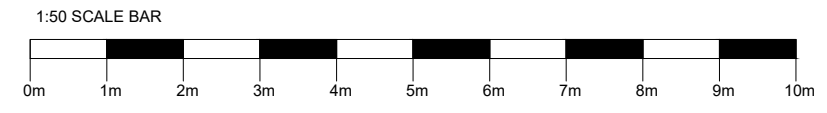
Section B-B

P3	08.12.2023	Planning issue following comments on validation.	JC	KM
P2	08.11.2023	Planning issue	JC	KM
P1	2023.09.26	First Issue	JC	KM
Rev	Date + notes		Drwn	Chkd

**rhp** partnership architects  
 94 Chesterton Road Cambridge CB4 1ER  
 T 01223 316309  
 www.rhpartnership.co.uk  
 cambridge@rhpartnership.co.uk

Project  
**Benwick Community Primary School**  
 2 classrooms, toilets & cloaks in the same location as the existing mobile

Drawing  
**Proposed sections - Permanent**



Project	originator	volume	level	type	rise	number	revision
BPS-RHP-TB-ZZ-DR-A-2200	P3						
Scale(s) @ A1	RHP Project	Drwn	Chkd				
1:50	P1207	JC	KM				
Status	Planning						Substability
							SO