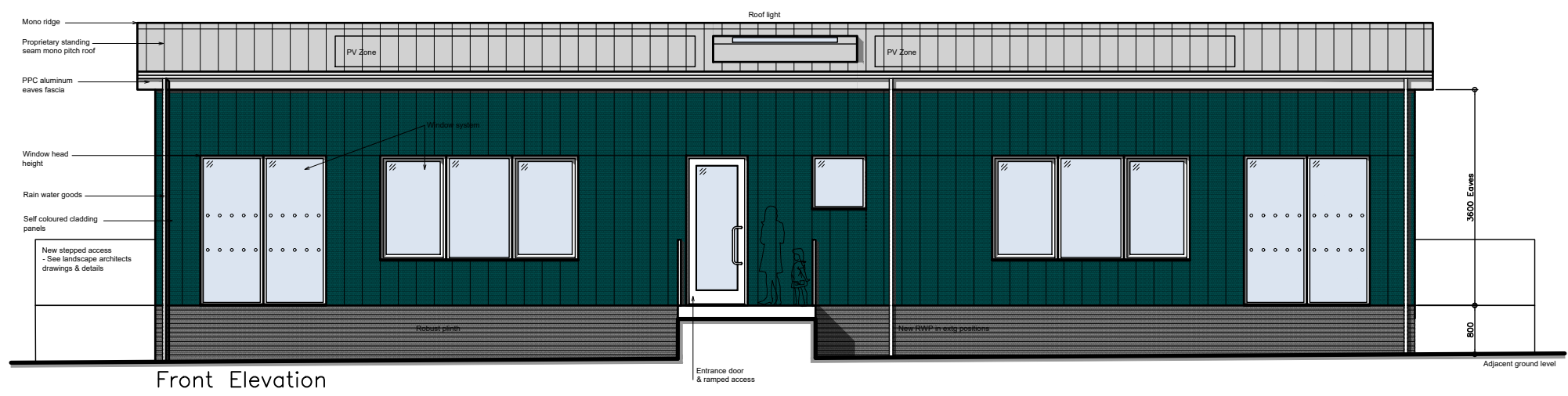
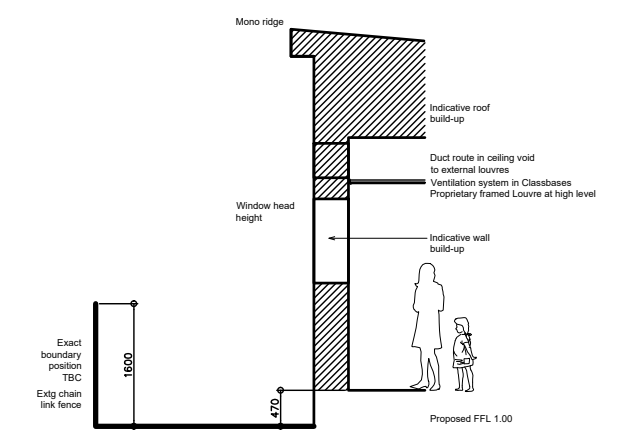


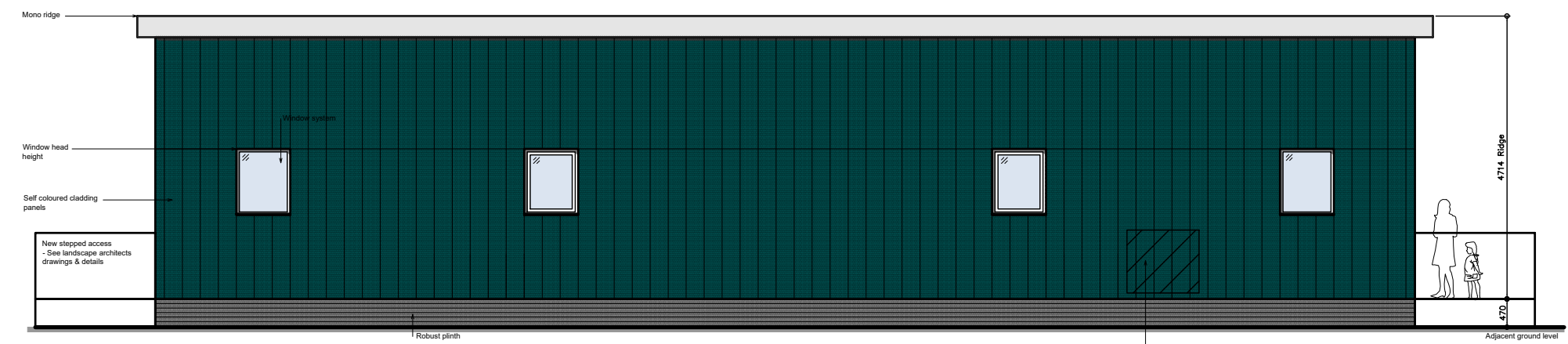
Notes



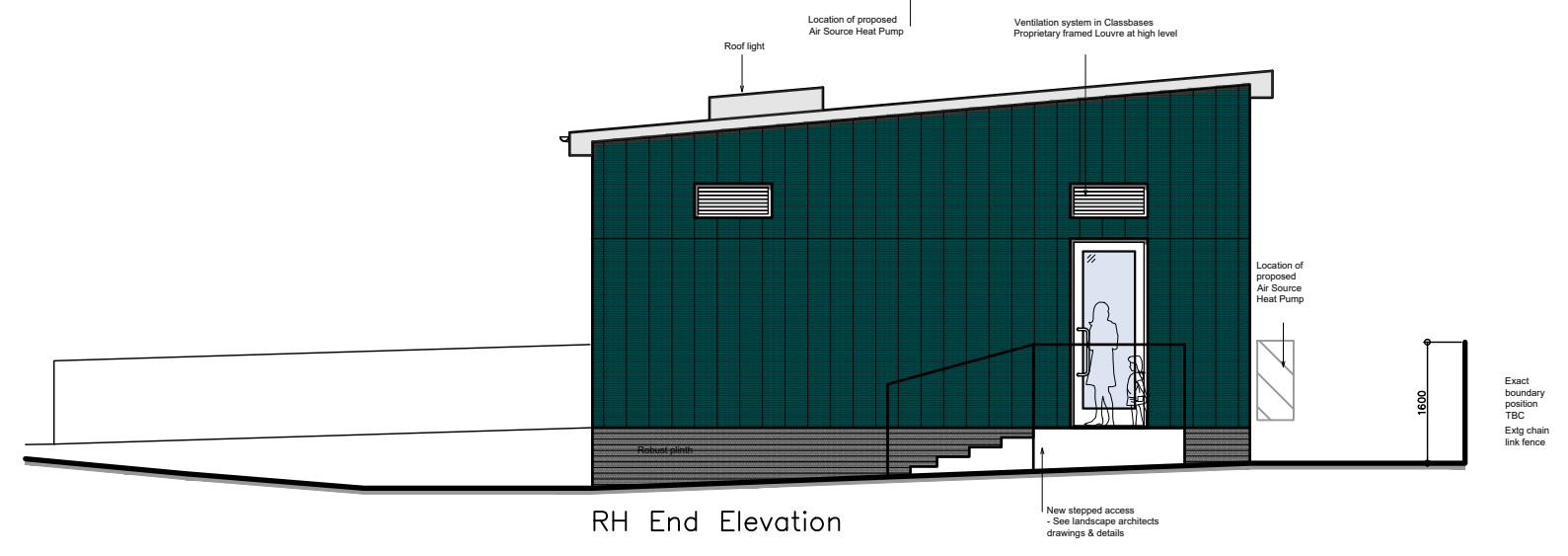
Front Elevation



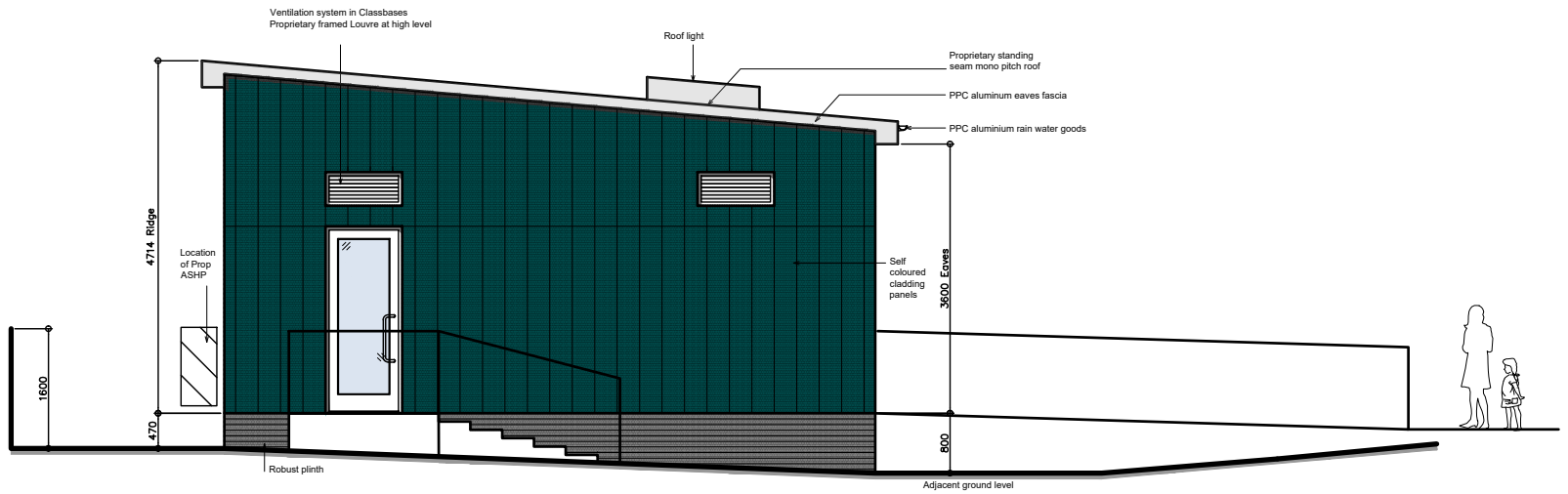
Indicative section



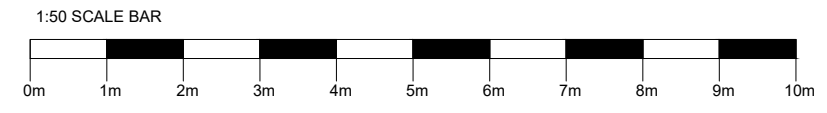
Rear Elevation



RH End Elevation



LH End Elevation



Rev	Date	Notes	Drwn	Chkd
P8	08.12.2023	Planning issue following comments on validation.	JC	KM
P7	01.11.2023	Planning revision	JC	KM
P6	31.10.2023	Planning revision	JC	KM
P5	13.10.2023	PV zone indicated	JC	KM
P4	21.09.2023	Issued for MS3	JC	KM
P3	10.08.2023	Issued for MS2	JC	PW
P2	03.08.2023	Locations of ASHP added following review at DTM. Indicative section added.	JC	KM
P1	01.08.2023	First Issue	JC	KM

rhp **r & partnership architects**
 94 Chesterton Road Cambridge CB4 1ER
 T 01223 316309
 www.rhpartnership.co.uk
 cambridge@rhpartnership.co.uk

Project
Benwick Community Primary School
 2 classrooms, toilets & cloaks in the same location as the existing mobile

Drawing
Proposed elevations

Project	originator	volume level	type	role	number	revision
BPS-RHP-TB-ZZ-DR-A-2105	RHP Project		Drwn	Chkd		P8
Scale(s) @ A1			1:50		P01207	JC KM

Status **Planning** Substability