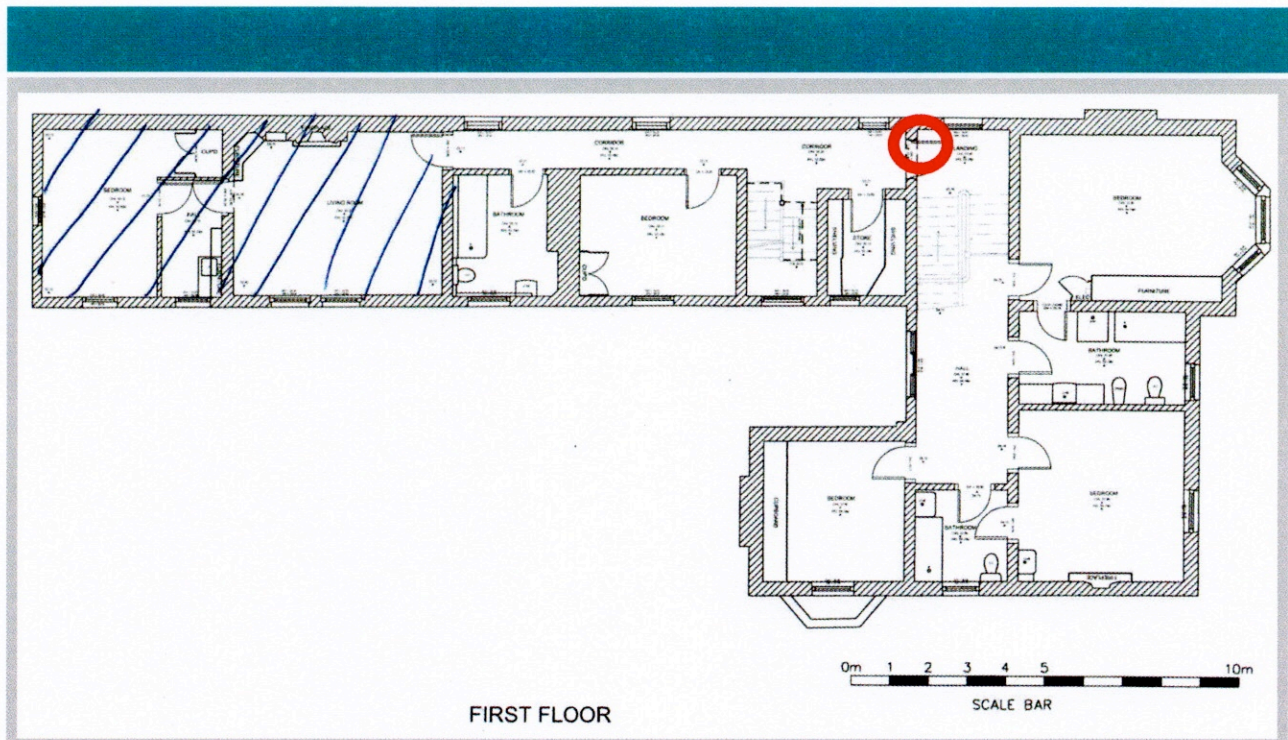
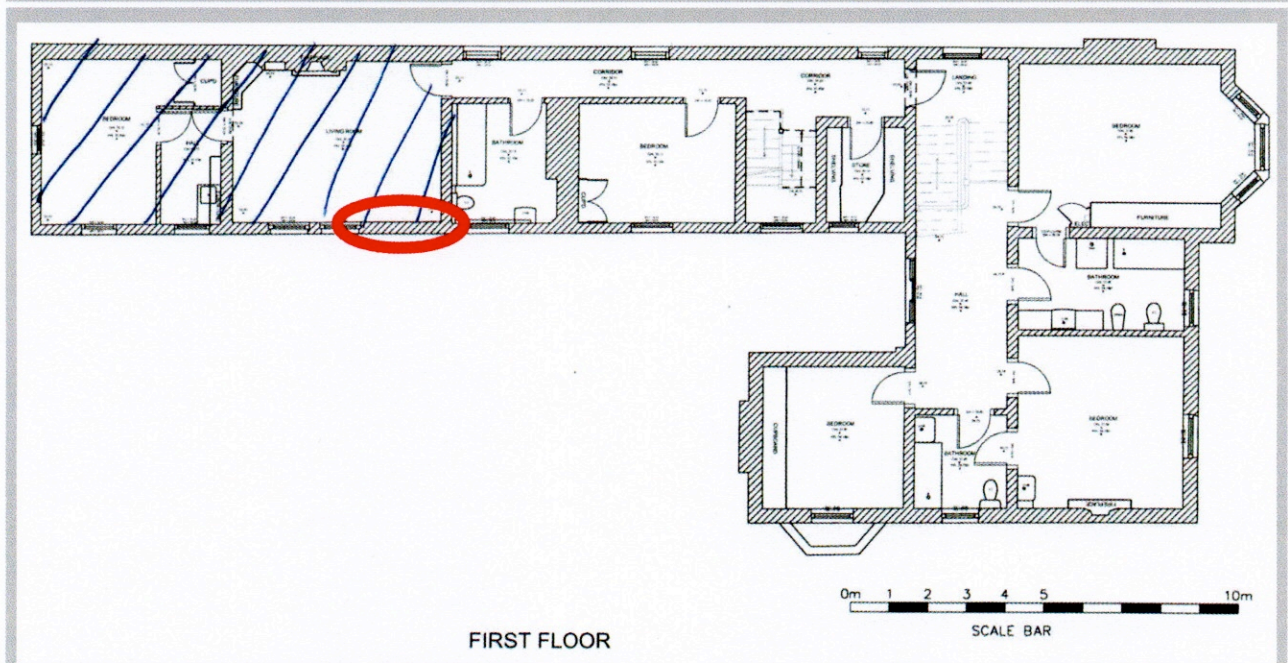


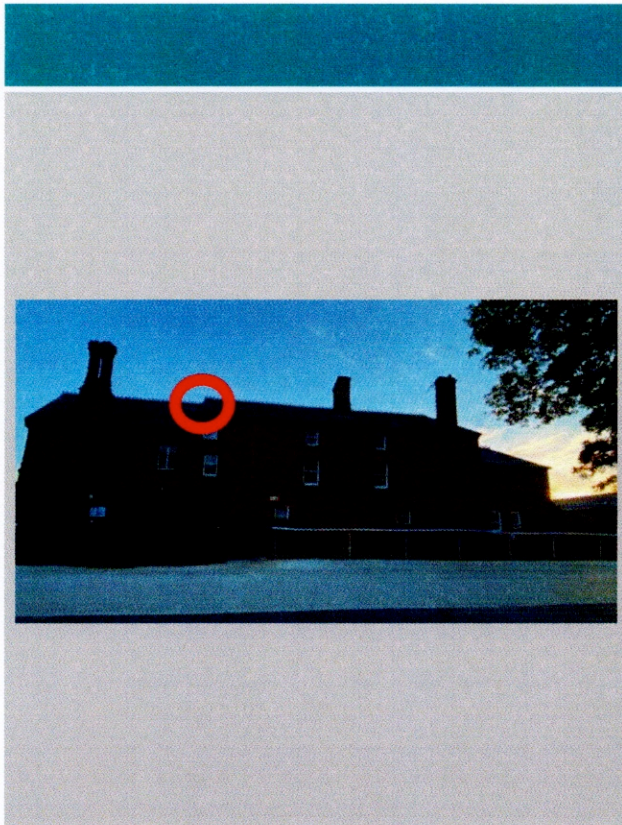
Appendix 2: Bat roost locations



Woodland House: Roost 1 - beneath a roof tile in a section of B1 that is being retained



Woodland House: Roost 2 - in an area of missing mortar and damaged brickwork and guttering at eaves level on the western elevation of a section of B1 to be demolished.



Photograph 1: Roost 1, a common pipistrelle day roost (1 x bat) beneath a roof tile in a section of B1 that is being retained



Photograph 2: Roost 1, a common pipistrelle day roost (1 x bat) beneath a roof tile in a section of B1 that is being retained



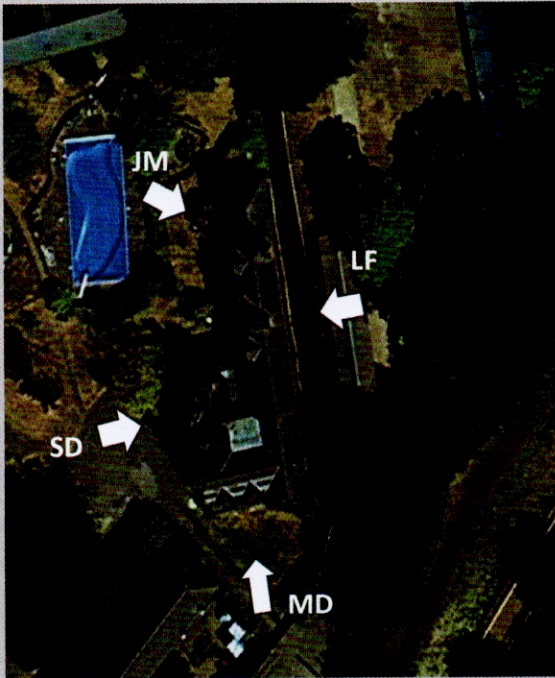
Photograph 3: Roost 2, a common pipistrelle day roost (1 x bat) in an area of missing mortar and damaged brickwork and guttering at eaves level on the western elevation of a section of B1 to be demolished.



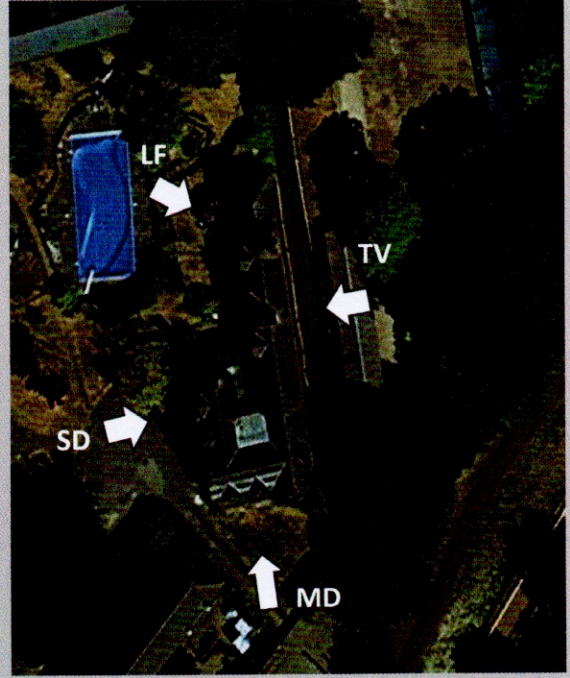
Photograph 4: showing re-entry and emergence points recorded at Roost 2

Appendix 3: Surveyor locations

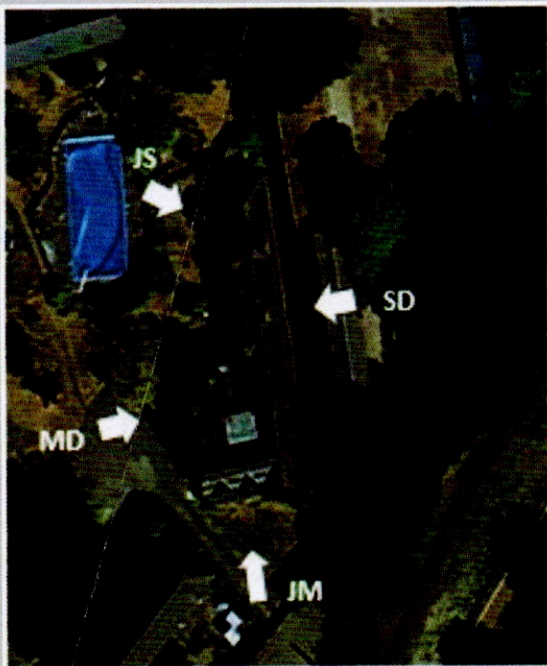
7.1 Woodland House B1



Evening Emergence Survey (1st June 2021)



Dawn Re-entry Survey (15th June 2021)



Evening Emergence Survey (29th June 2021)

Appendix 5: Survey Data

7.3 Woodland House (B1)

Visit 1 – 1st June (Dusk)

Survey	Surveyor	Time (hrs)	Species	Calls (per minute)	Activity
Emergence	Laura Farrar	21:19	Common pipistrelle	1	Emergence
Emergence	Laura Farrar	21:30	Brown long-eared (BLE)	1	Pass. Detector didn't pick up.
Emergence	Jack Morphet	21:32	Common pipistrelle	1	Feeding buzz – 2x bats
Emergence	Jack Morphet	21:34	Soprano pipistrelle	2	Commuting – headings south.
Emergence	Suzanne Dry	21:35	Common pipistrelle	1	Commuting
Emergence	Jack Morphet	21:36	Common pipistrelle	1	Pass
Emergence	Jack Morphet	21:39	Common pipistrelle	1	2x Passes
Emergence	Megan Downes	21:39	Common pipistrelle	1	Pass
Emergence	Laura Farrar	21:39	Common pipistrelle	3	3x Passes
Emergence	Suzanne Dry	21:43	Common pipistrelle	1	Pass
Emergence	Jack Morphet	21:45	Common pipistrelle	1	Feeding buzz
Emergence	Megan Downes	21:45	Common pipistrelle	1	Pass
Emergence	Jack Morphet	21:47	Common pipistrelle	2	Flying north
Emergence	Jack Morphet	21:56	Common pipistrelle	1	Heading west over the house
Emergence	Laura Farrar	22:01	Common pipistrelle	1	Pass

Survey	Surveyor	Time (hrs)	Species	Calls (per minute)	Activity
Emergence	Suzanne Dry	22:04	Common pipistrelle	4	Pass
Emergence	Megan Downes	22:04	Common pipistrelle	3	Flying from south
Emergence	Jack Morphet	22:09	Common pipistrelle	2	Feeding
Emergence	Laura Farrar	22:09 – 22:23	Common pipistrelle	11	Pass
Emergence	Suzanne Dry	22:11	Noctule	1	Pass
Emergence	Jack Morphet	22:12	Noctule	1	Pass
Emergence	Suzanne Dry	22:15	Noctule	1	Pass
Emergence	Suzanne Dry	22:15	Common pipistrelle	2	Pass
Emergence	Megan Downes	22:17	Common pipistrelle	1	Flying south
Emergence	Suzanne Dry	22:18	BLE	1	Pass
Emergence	Megan Downes	22:19	Common pipistrelle	2	Pass
Emergence	Suzanne Dry	22:21-22:39	Common pipistrelle	9	Pass
Emergence	Laura Farrar	22:27	Common pipistrelle	1	Circling
Emergence	Laura Farrar	22:34 – 22:50	Common pipistrelle	9	Pass
Emergence	Suzanne Dry	22:42	Common pipistrelle	3	Pass
Emergence	Suzanne Dry	22:42	Noctule	1	Pass
Emergence	Megan Downes	22:43	Common pipistrelle	2	Circling the house

Survey	Surveyor	Time (hrs)	Species	Calls (per minute)	Activity
Emergence	Suzanne Dry	22:48	Serotine	1	Pass
Emergence	Suzanne Dry	22:49	Common pipistrelle	1	Pass
Emergence	Suzanne Dry	22:49	Noctule	1	Pass
Emergence	Megan Downes	22:49	Common pipistrelle	2	Pass

Visit 2 – 15th June (Dawn)

Survey	Surveyor	Time (hrs)	Species	Calls (per minute)	Activity
Re-entry	Tristan Varney	03:01	Common pipistrelle	1	Pass
Re-entry	Megan Downes	03:02	Common pipistrelle	1	Pass behind (from stables to SW)
Re-entry	Laura Farrar	03:07	Common pipistrelle	1	Pass
Re-entry	Megan Downes	03:07	Common pipistrelle	1	Pass behind (from stables to SW)
Re-entry	Tristan Varney	03:08	Common pipistrelle	1	Pass
Re-entry	Megan Downes	03:08	Common pipistrelle	1	Pass behind (from stables to SW)
Re-entry	Megan Downes	03:10	Common pipistrelle	1	Pass behind (from stables to SW)
Re-entry	Suzanne Dry	03:10	Common pipistrelle	1	Pass
Re-entry	Megan Downes	03:12	Common pipistrelle	1	Pass behind (from stables to SW)
Re-entry	Tristan Varney	03:14	BLE	1	Pass.
Re-entry	Megan Downes	03:15	Common pipistrelle	1	Pass behind (from stables to SW)

Survey	Surveyor	Time (hrs)	Species	Calls (per minute)	Activity
Re-entry	Tristan Varney	03:18	Serotine	1	Pass
Re-entry	Megan Downes	03:18	Noctule	1	Pass
Re-entry	Megan Downes	03:19	Common pipistrelle	1	Pass
Re-entry	Tristan Varney	03:20	Serotine	1	Pass
Re-entry	Laura Farrar	03:20	Noctule	1	Pass
Re-entry	Megan Downes	03:22	Common pipistrelle	1	Pass
Re-entry	Tristan Varney	03:23	Serotine	1	Pass
Re-entry	Laura Farrar	03:23	Noctule	1	Pass
Re-entry	Tristan Varney	03:35	Common pipistrelle	1	Pass
Re-entry	Megan Downes	03:38	Common pipistrelle x2	1	2 circling house
Re-entry	Suzanne Dry	03:38	Common pipistrelle	1	2 commuting
Re-entry	Tristan Varney	03:39	BLE	1	From NW of house and headed NE
Re-entry	Laura Farrar	03:39	Common pipistrelle	1	5 passes, circling garden and flew over hedge to N of house and back
Re-entry	Megan Downes	03:40	Common pipistrelle x2	1	Commuting - 2 flying low through gate by house to SE
Re-entry	Laura Farrar	03:41	Common pipistrelle	1	2 passes
Re-entry	Laura Farrar	03:42	Common pipistrelle	1	3 passes
Re-entry	Laura Farrar	03:45	Common pipistrelle	1	Pass