

Fig. 2 Modern Ordnance Survey map showing the area covered by the Scheduled Ancient Monument (in red)



Fig. 3 Map showing location of the Stonar Bank and two other coastal spits which blocked the former eastern entrance to the Wantsum Channel (based on LVRG 2006)



Fig. 4 Map dated c. 1548; Stonar not shown (North is to the bottom)



Fig. 5 Map dated c. 1585; a single building is shown at Stonar (North is to the bottom)

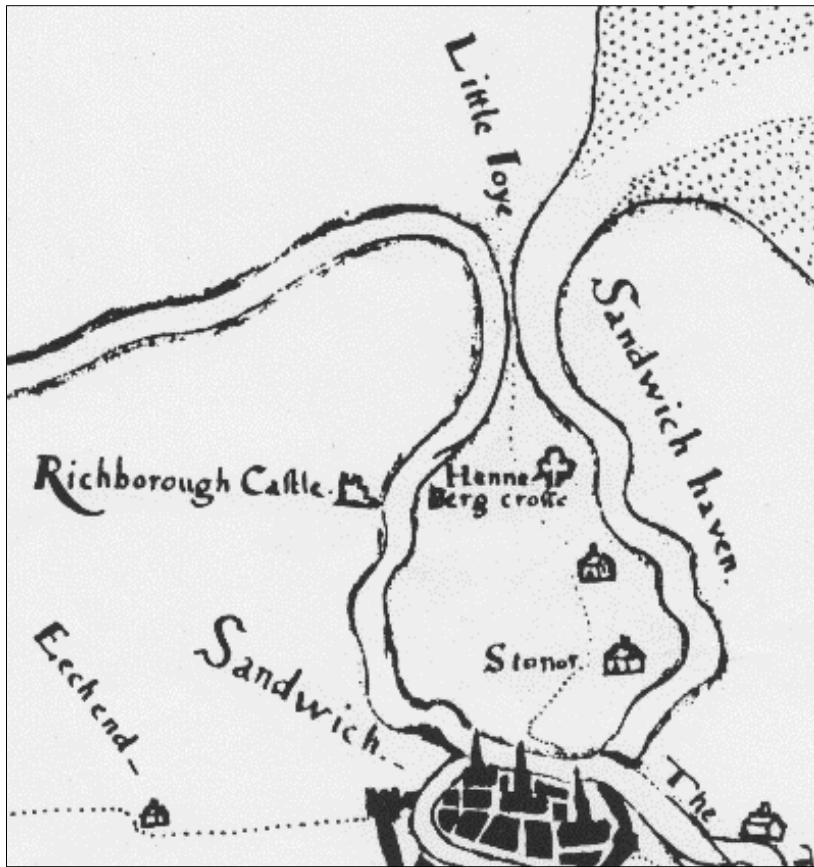


Fig. 6 Detail of a tracing of a map of 1624, showing Henneberg Cross

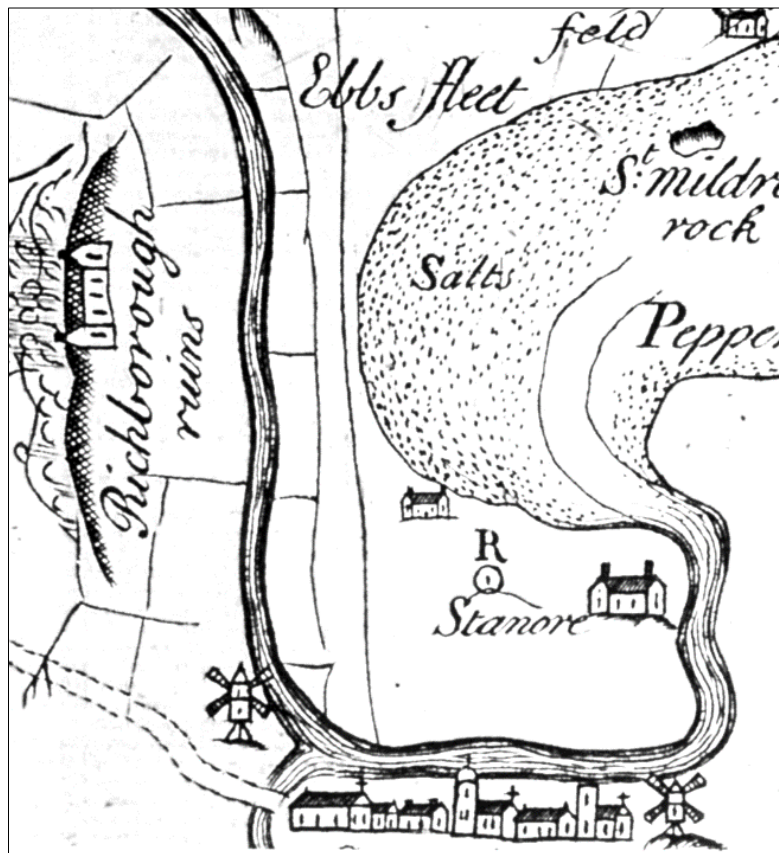


Fig. 7 Detail of a map from Lewis (1723)



Fig. 8 Map of the Stonar area in 1769, published by Drury and Herbert

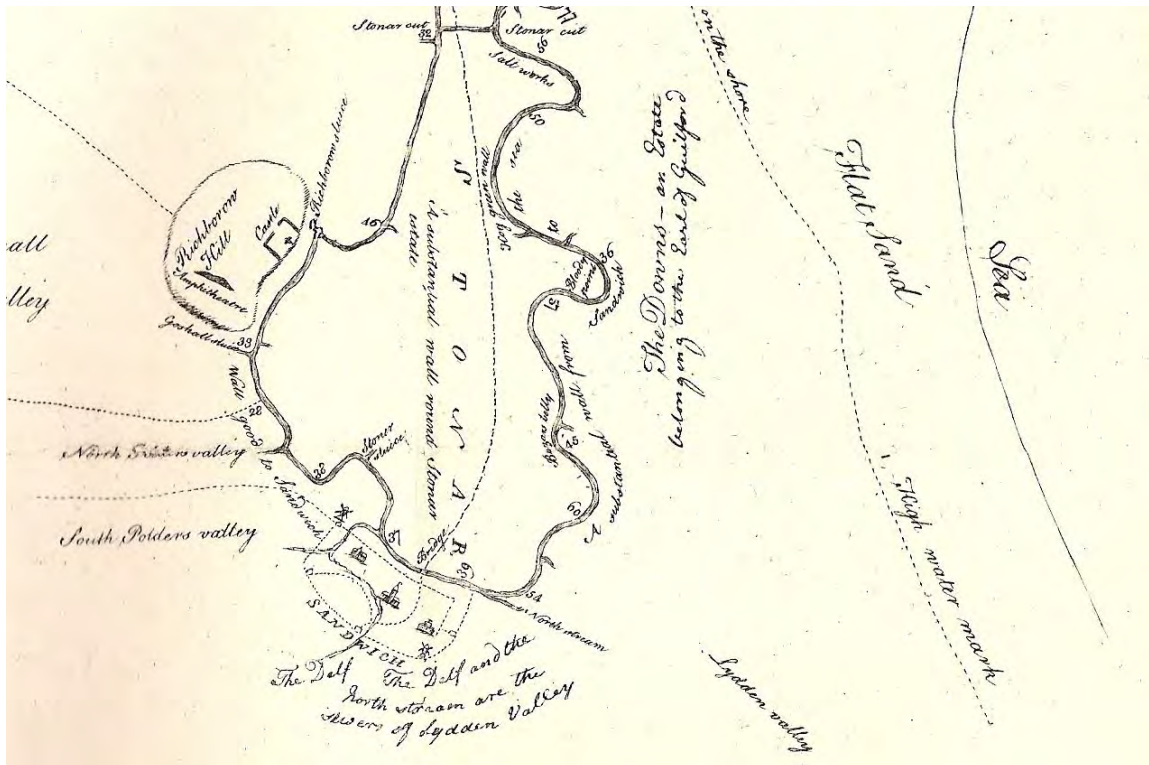


Fig. 9 Detail of Boys' map of the Stonar area, 1775

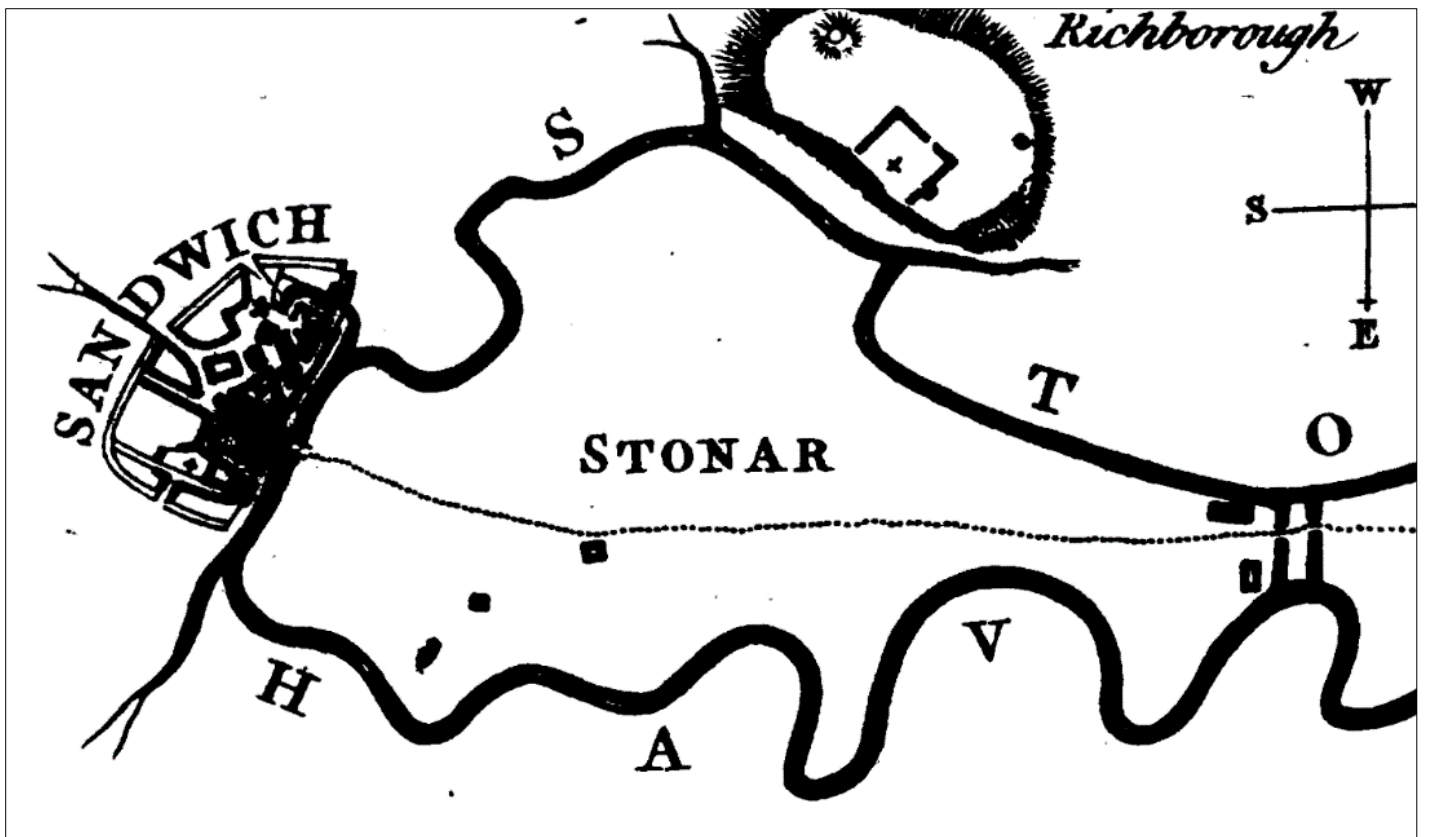


Fig. 10 Detail of map from Gostling (1777)

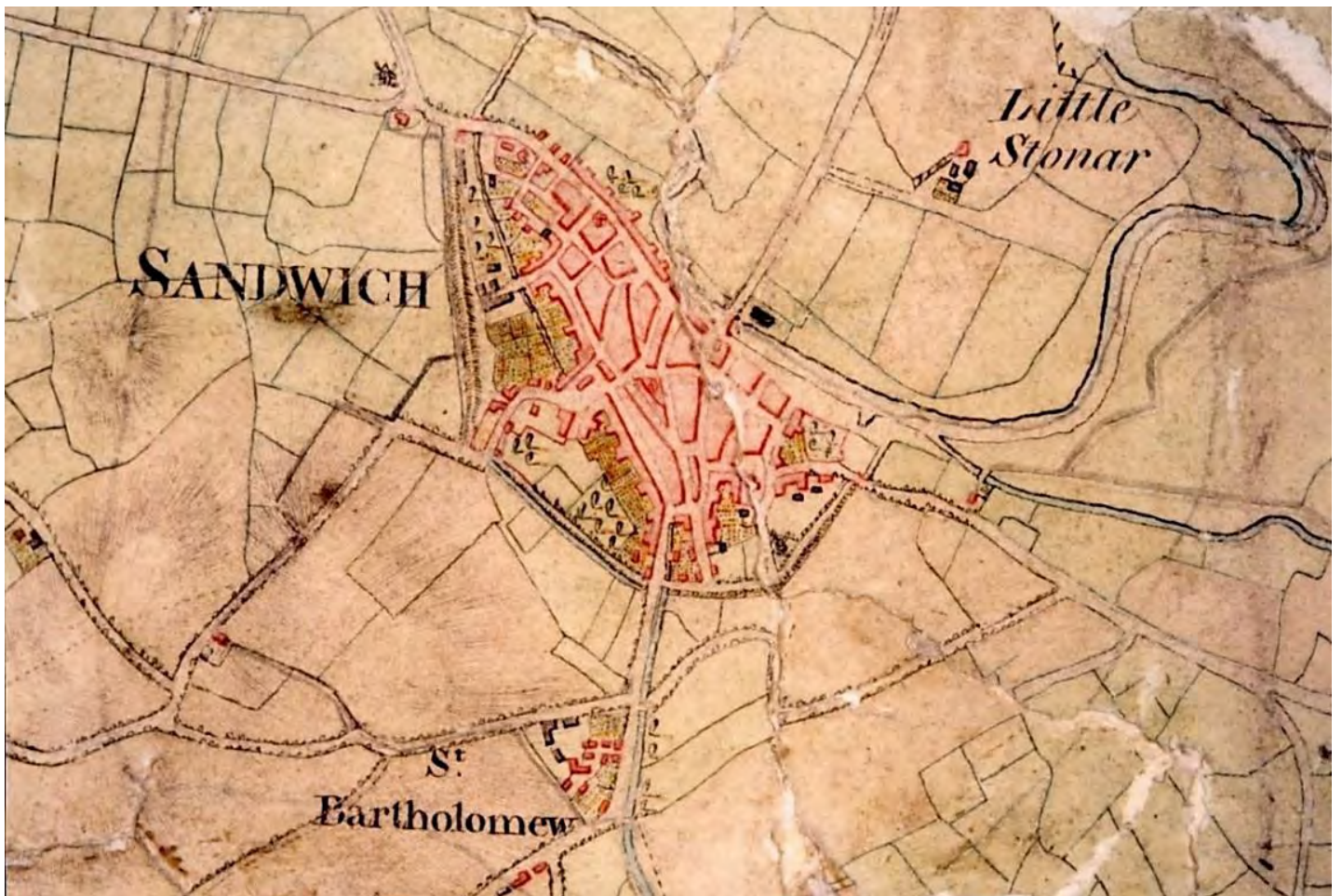


Fig. 11 Ordnance Survey draft plan of the Sandwich and Stonar area, 1797



Fig. 12 Map of the Stonar and Sandwich area, by William Mudge, 1801



Fig. 13 Detail of Cary's map of the *Environs of Margate and Ramsgate* (1812)

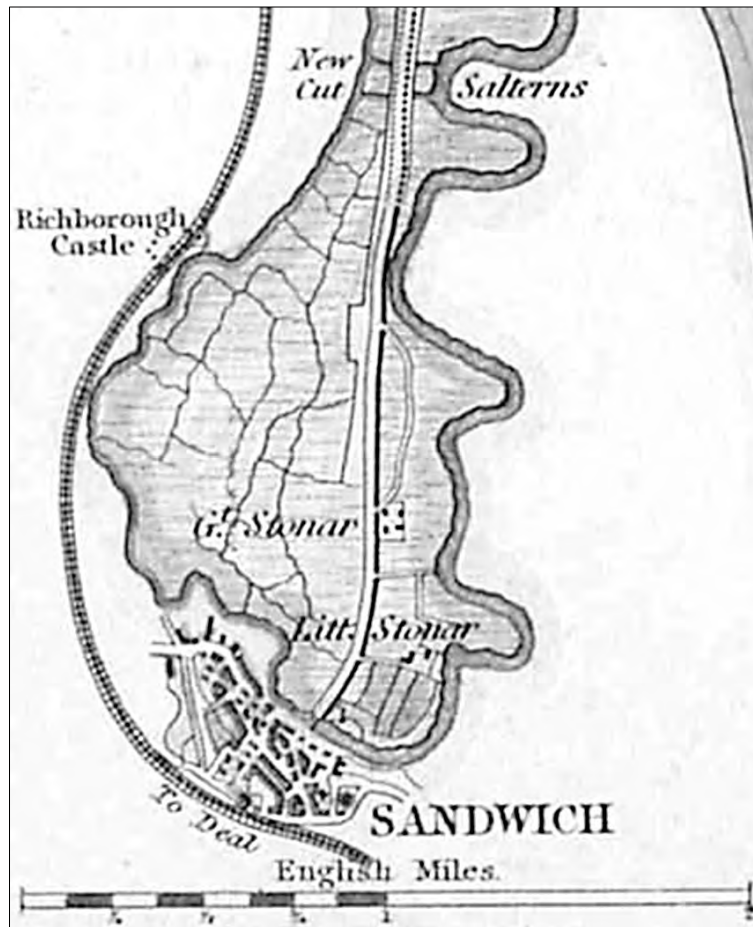


Fig. 14 Detail of Moule's Thanet map of c. 1848

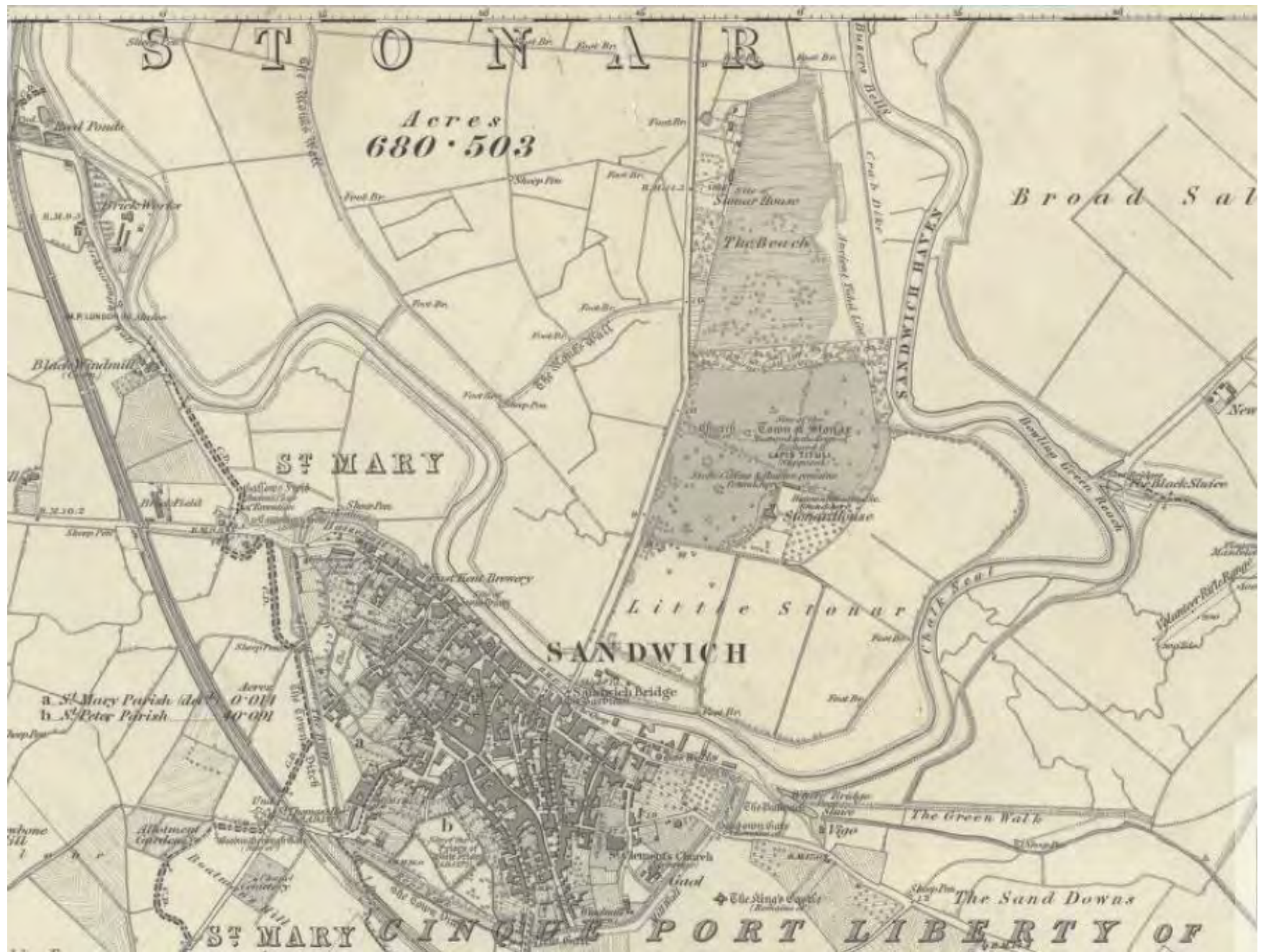


Fig. 15 Six-inch Ordnance Survey map of Stonar and Sandwich, published 1877



Fig. 16 Detail of six-inch Ordnance Survey map of Stonar, surveyed 1872, published 1877

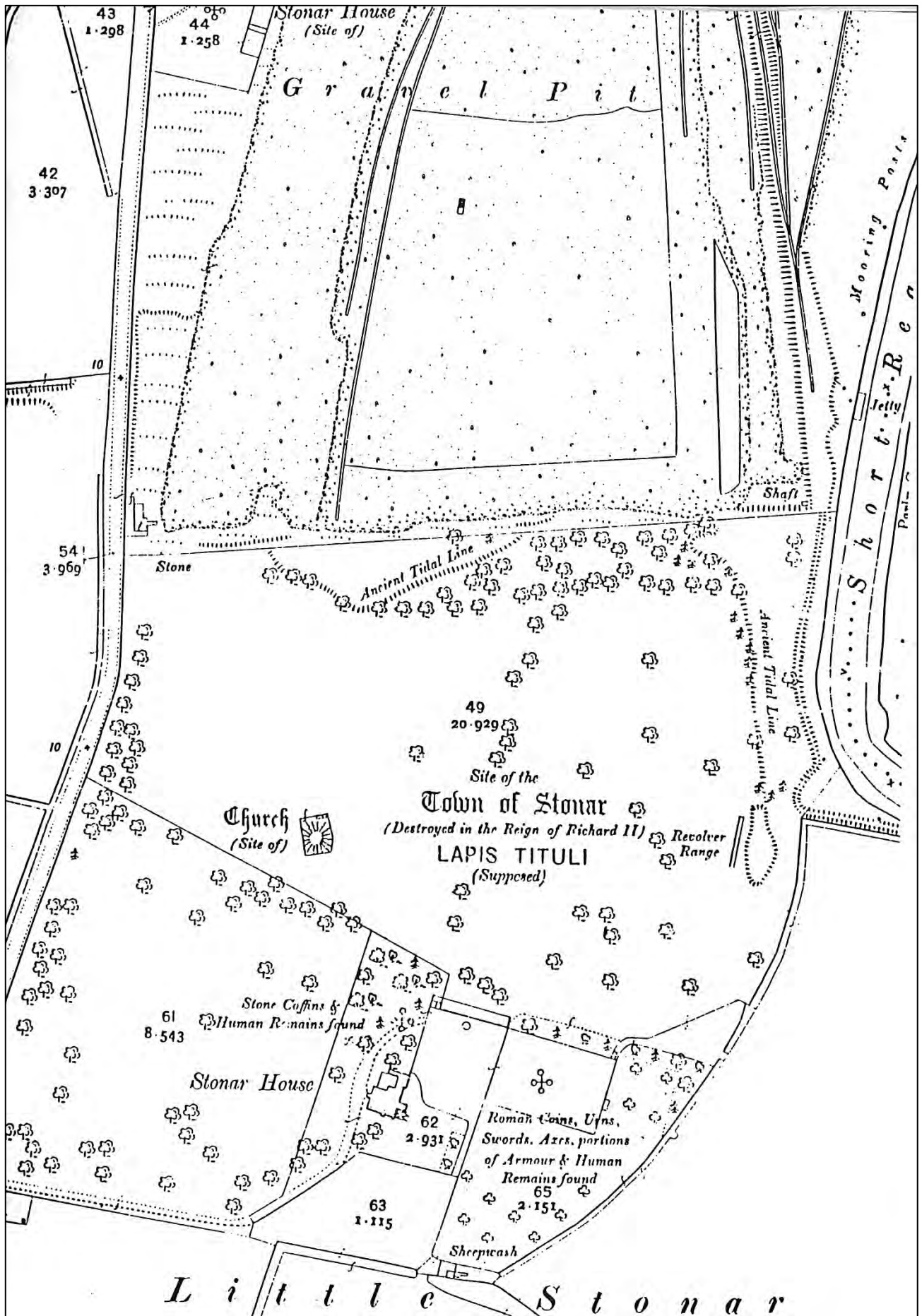


Fig. 17 Detail of Stonar from the 25 inch Ordnance Survey map of 1907

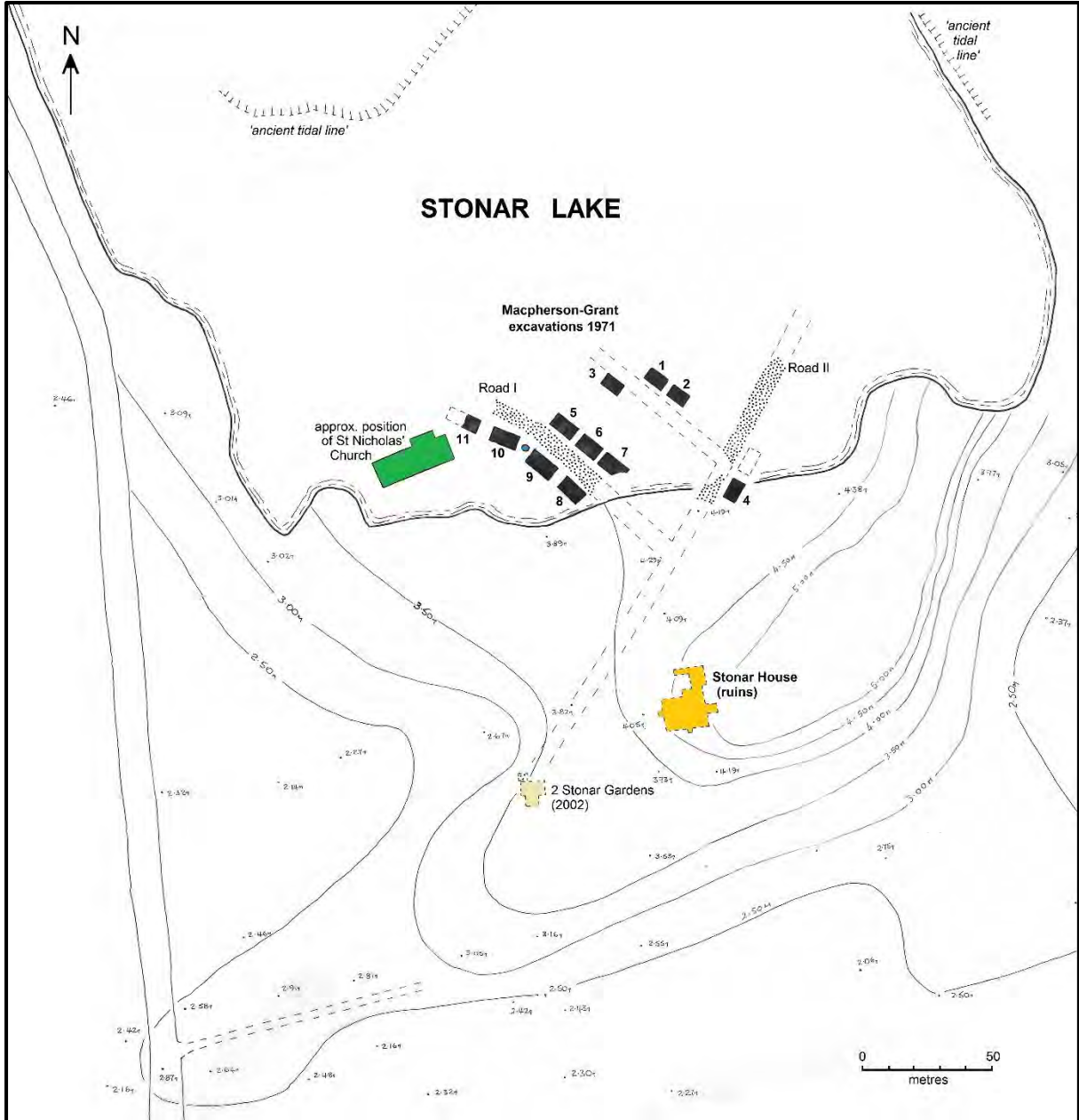


Fig. 18 Working plan of 2005 relating excavated medieval remains to local topography (based on CAT survey records and Perkins 1993)

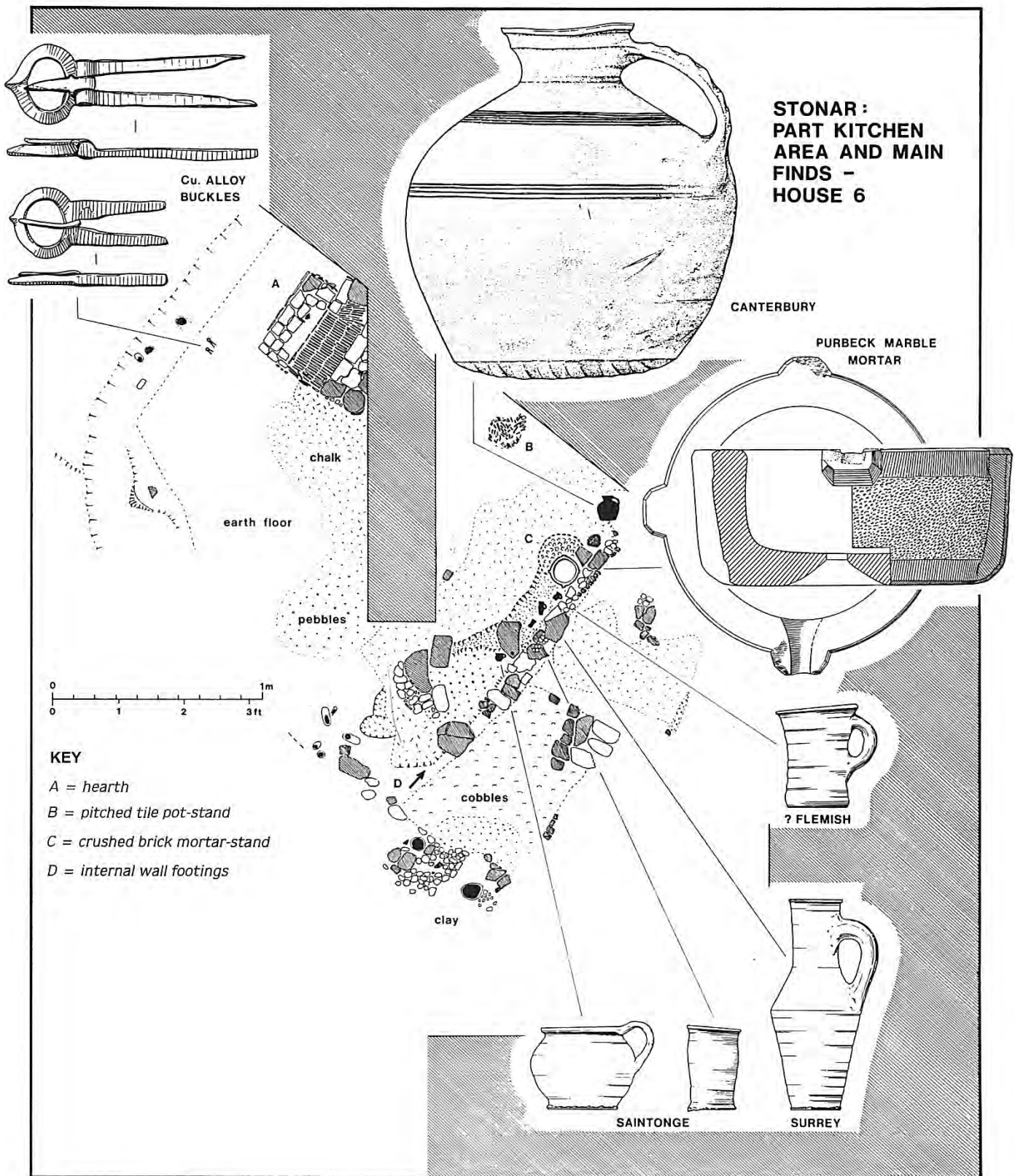


Fig. 20 Plan of House 6 following removal of the 1385 destruction debris (after Macpherson-Grant 1991)

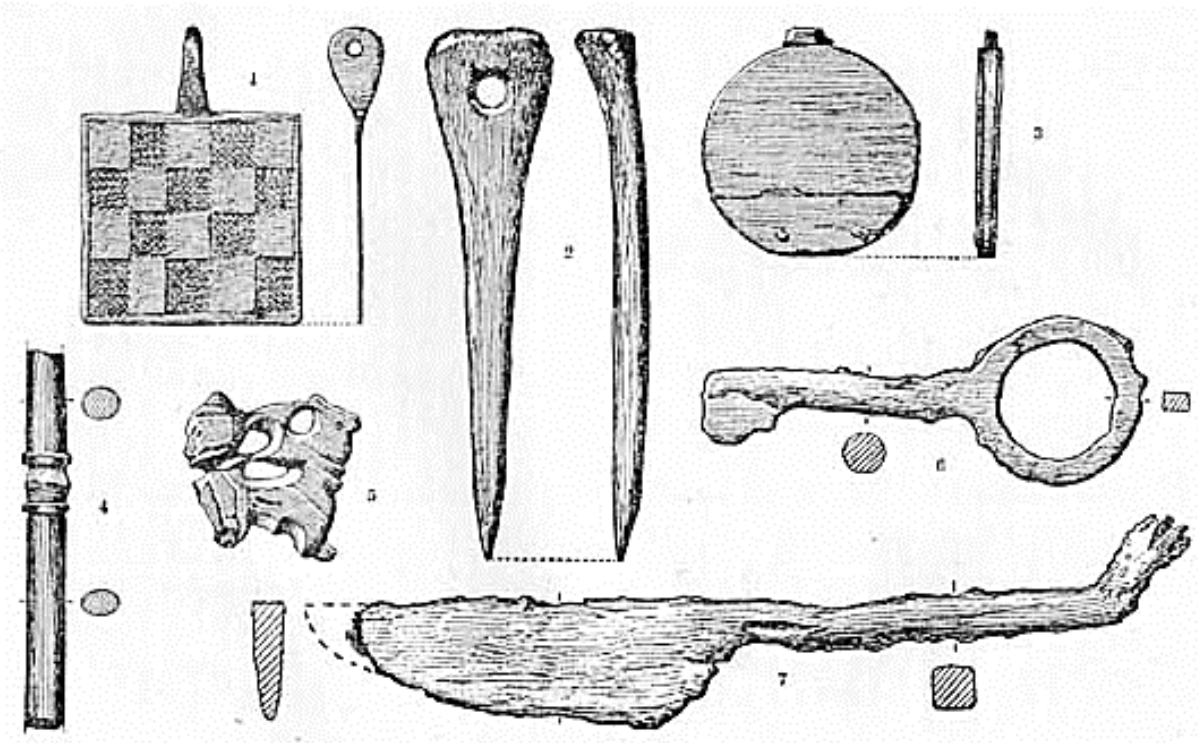


Fig. 21 Metal and bone artefacts recovered from Stebbing's excavations (from Harman and Stebbing 1942, plate II)

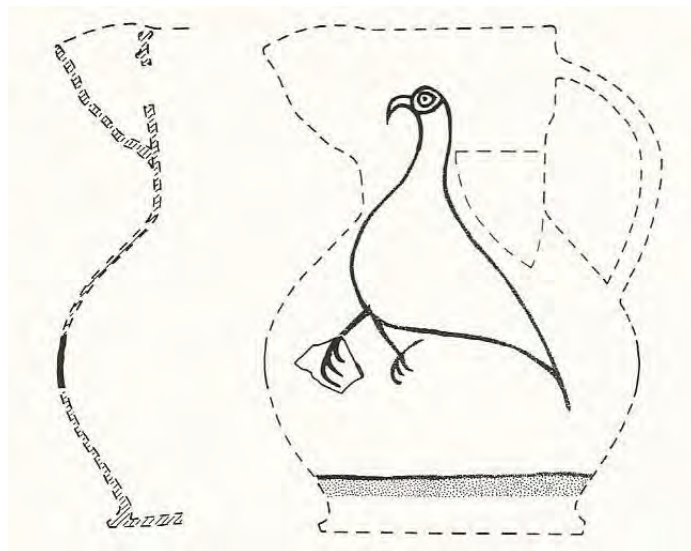


Fig. 22 French Saintonge bird painted polychrome jug (from Macpherson-Grant 1991)

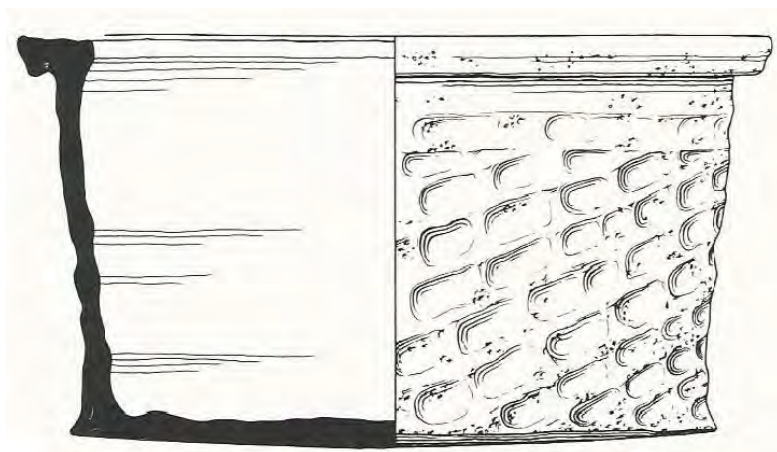


Fig. 23 Breton *ceramique onctueuse* cooking pot (from Macpherson-Grant 1991)

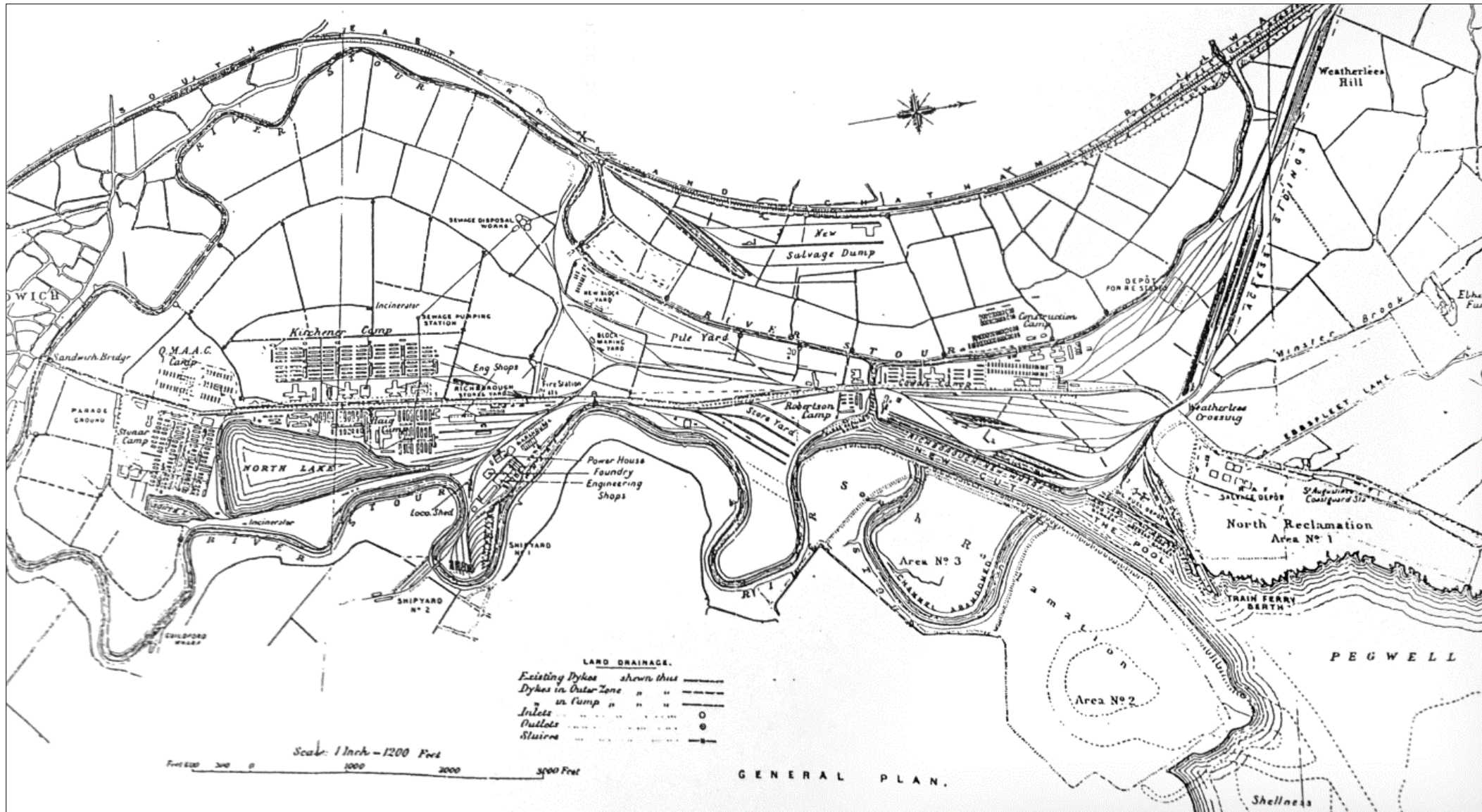


Fig. 24 Plan of Richborough Port, 1918 (taken from Butler 1996, fig. 30)

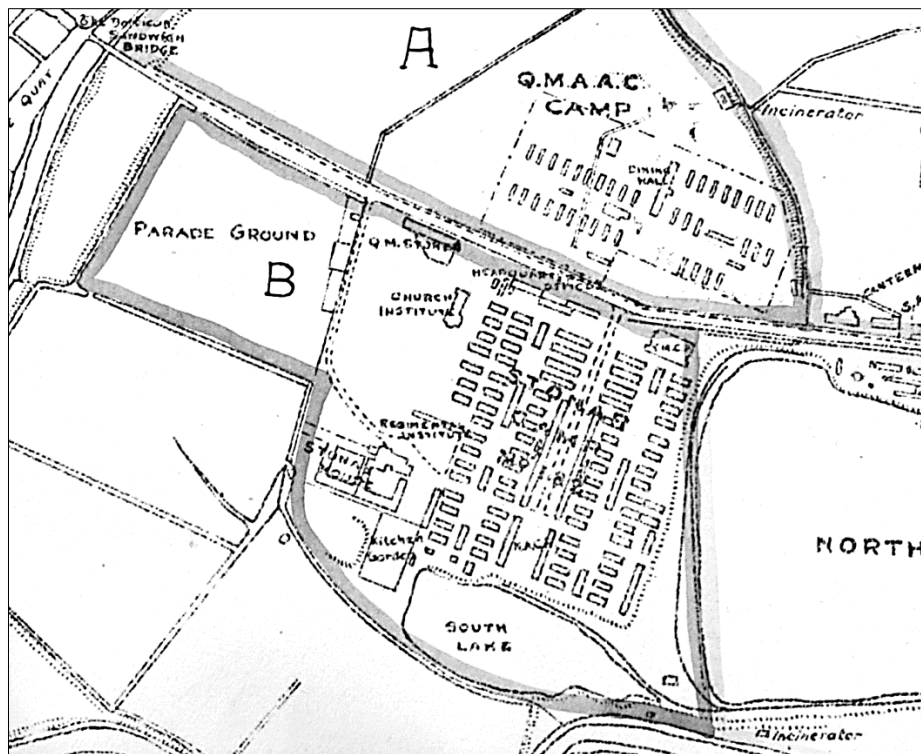


Fig. 25 Detail of a *General Plan of Richborough*, dated 21 February 1918

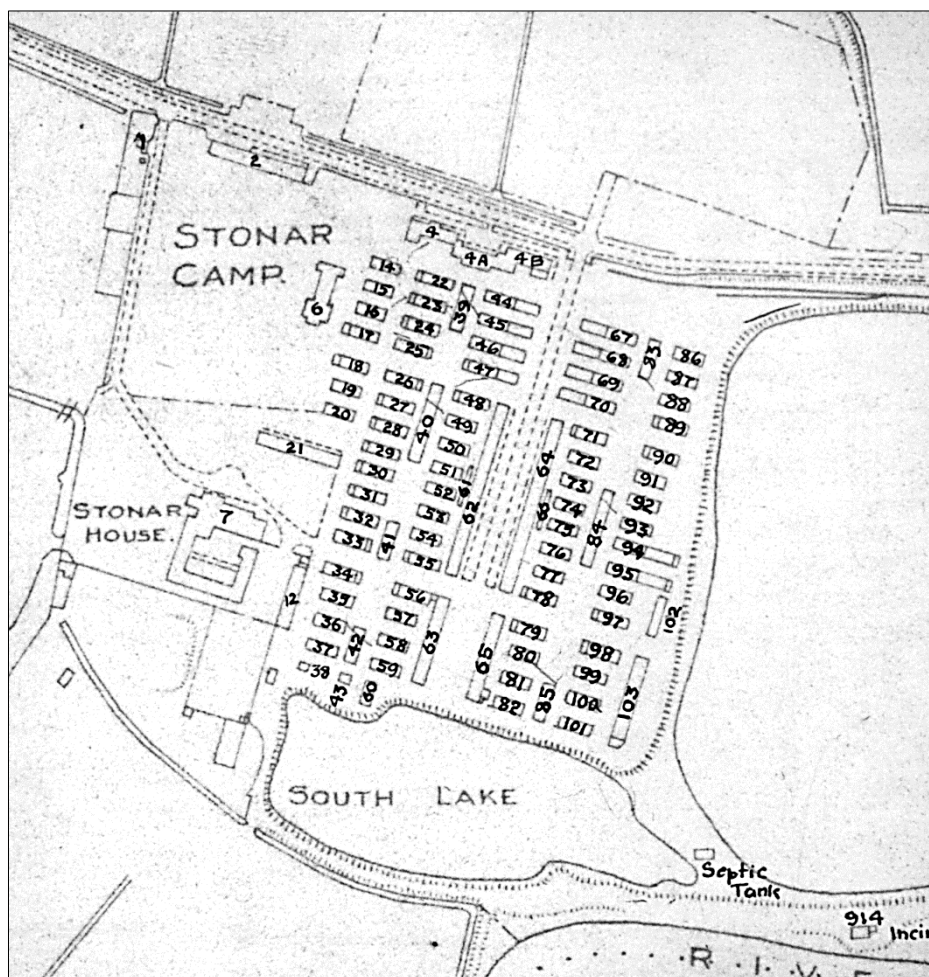


Fig. 26 Detail of the 'numbered plan' of Richborough Port, early 1920s (*NB* west is at the top)



Fig. 27 Stonar House in the 1920s, looking east

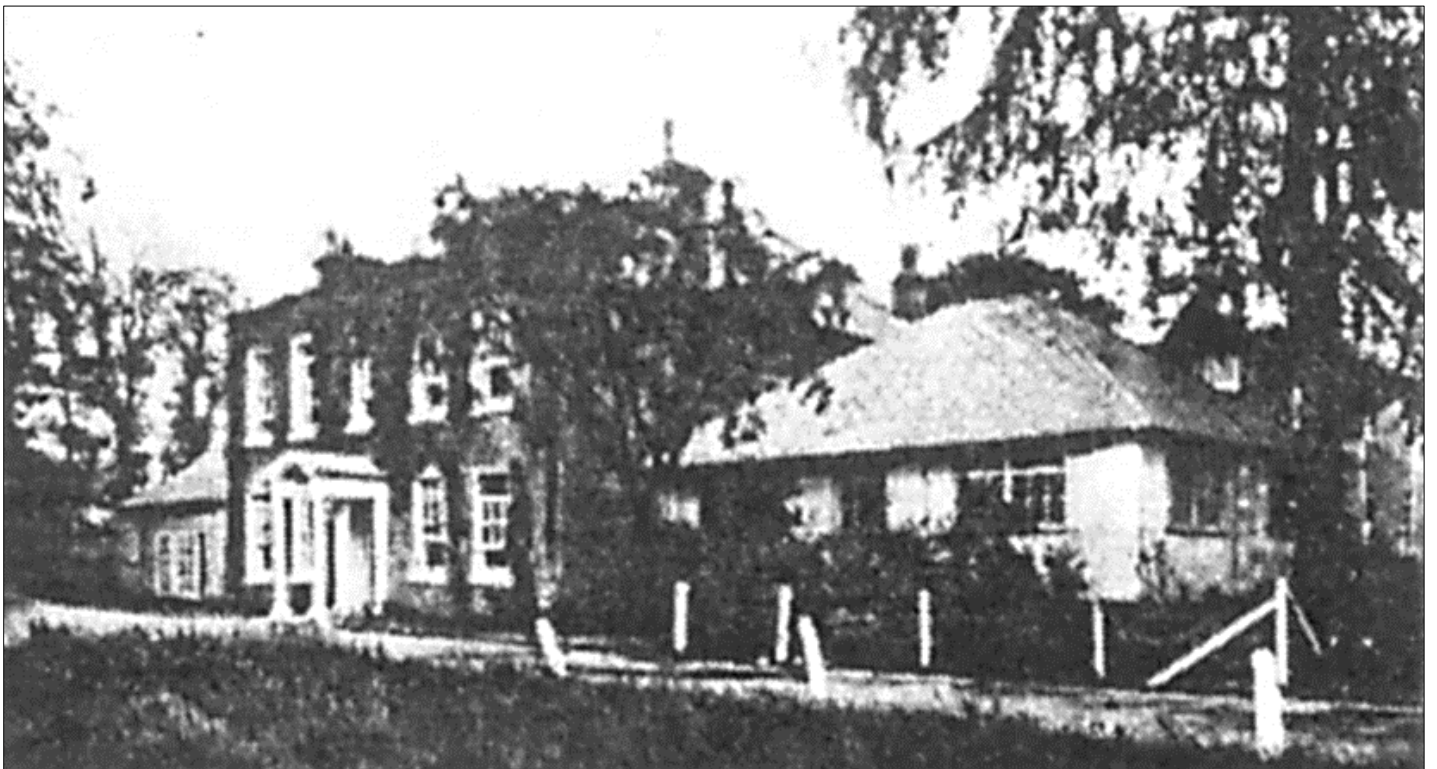


Fig. 28 Another view, showing First World War extensions to north and south of original frontage



Fig. 29 Stonar House and adjacent military buildings, 1927, looking east (©Britain from Above; EPW018588)

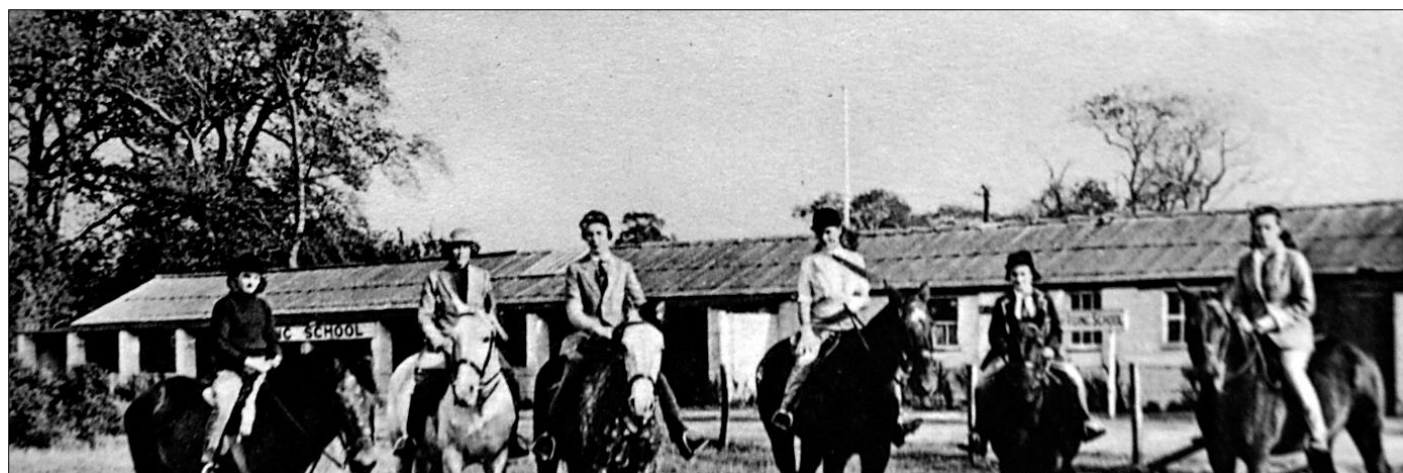


Fig. 30 The Regimental Quartermaster's stores in use as riding school during the 1920s, looking south-west



Fig. 31 The Headquarters Offices in the 1950s (in use as dwellings)



Fig. 32 The Headquarters Offices in use as Domestic Science Department of Stonar House School (from Butler 1999)